



# **Introduction to Additional Measures of Effectiveness (AMOE)**

Transportation Advisory Commission  
December 20, 2022

Gregg L. Steverson, Deputy Director  
Fairfax County Department of Transportation

# Outline

- Purpose and Need
- Working Group Members
- Completed Tasks
- Remaining Tasks
- Questions



# Purpose and Need

## Current Transportation Analysis Process

- Main Measures of Effectiveness (MOEs): Level of Service (LOS) and vehicle delay/queuing
- Traffic Impact Analyses/Traffic Studies are used for:
  - Comprehensive Planning
  - Entitlement
  - Corridor Studies
- Analyses focus primarily on vehicles
- Impacts are framed in terms of “impacts to vehicular traffic”
- Can often result in recommendations to widen roadways
- Creates the perception that other modes are not valued (even though they are)

# Purpose and Need

## Where We Want to Go....

- Make our analyses more multimodal
  - Provide specific analyses related to pedestrians, bicycles, and transit
- Show the impacts of improving one mode on other modes
- Facilitate more conversations about modes and modal emphasis





# Purpose and Need

What This Is....	What This Isn't....
✓ An input into an overall process	✗ The “sole” answer
✓ A change in the way we evaluate transportation impacts	✗ A specific policy-based change
✓ A way to understand tradeoffs between transportation mode types	✗ A way to “stop a project”
✓ Adaptable based on the area of the county and context of the project	✗ Inflexible
✓ A way to assess how new MOEs can assist with our analyses	✗ Unchangeable with respect to the MOEs we use

# AMOE Working Group

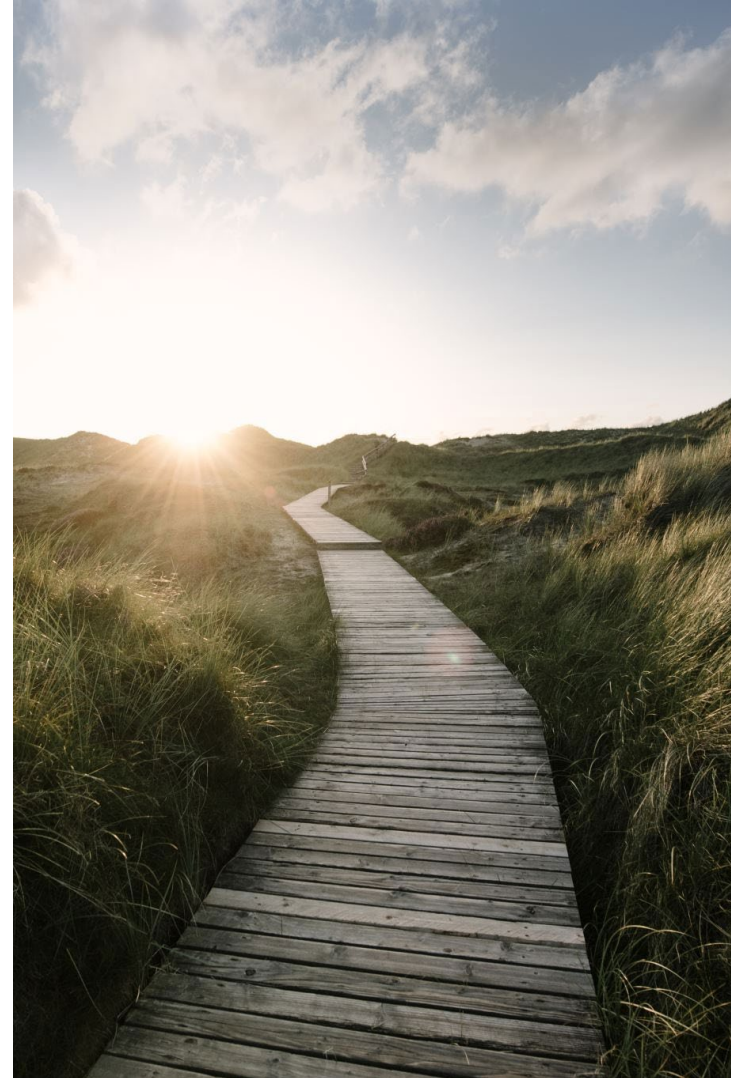
## Cross Department/Agency Team

- Fairfax County Department of Transportation (FCDOT)
- Department of Planning and Development (DPD)
- Health Department
- Virginia Department of Transportation (VDOT)



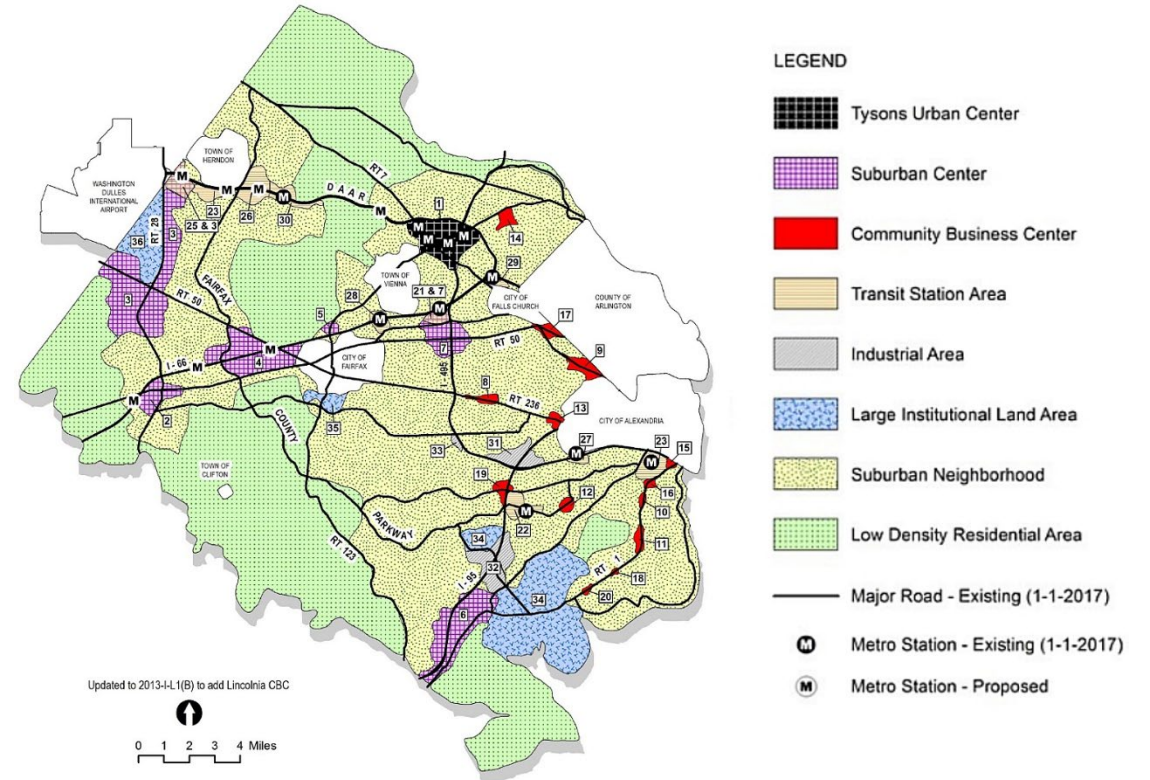
# Completed Tasks

- Initial FCDOT evaluation of potential new MOEs
- Presentation of measures to Working Group
- Selection of measures to be used in each of the following:
  - Comprehensive Planning
  - Entitlement
  - Corridor Studies
- Development of thresholds for each measure



# Completed Tasks (Continued)

- Discussion of tier structure and modal emphasis
  - Tier structure = grouping of areas in the county into “tiers” containing similar land use and transportation modal emphasis
  - Modal emphasis = what mode(s) to prioritize in what areas of the county
  - Tiers are linked to our Comprehensive Plan’s Special Planning Areas
  - <https://www.fairfaxcounty.gov/planning-development/comprehensive-plan/special-planning-areas>
- Discussion of how to compile results of each MOE to develop an overall recommendation





# Remaining Tasks

- Board Presentations/Meetings
- Edits (Based on Board Feedback)
- Development of User's Guide
- Outreach
  - VDOT
  - Internal and external users
  - Development community
  - Citizen/community groups (i.e. Transportation Advisory Committee)
  - Advocacy groups
  - Other public meetings as necessary
- Process Sign Off



# Board of Supervisors Discussions



We Are HERE

- Board Transportation Committee Presentation #1
  - Introduction of AMOE



Early 2023

- Meetings with Individual Board Members
- Board Transportation Committee Presentation #2
  - Measures Included, Modal Emphasis, Tier Structure, Analysis Output, Schedule for AMOE Adoption



Spring/Summer 2023



# Questions?