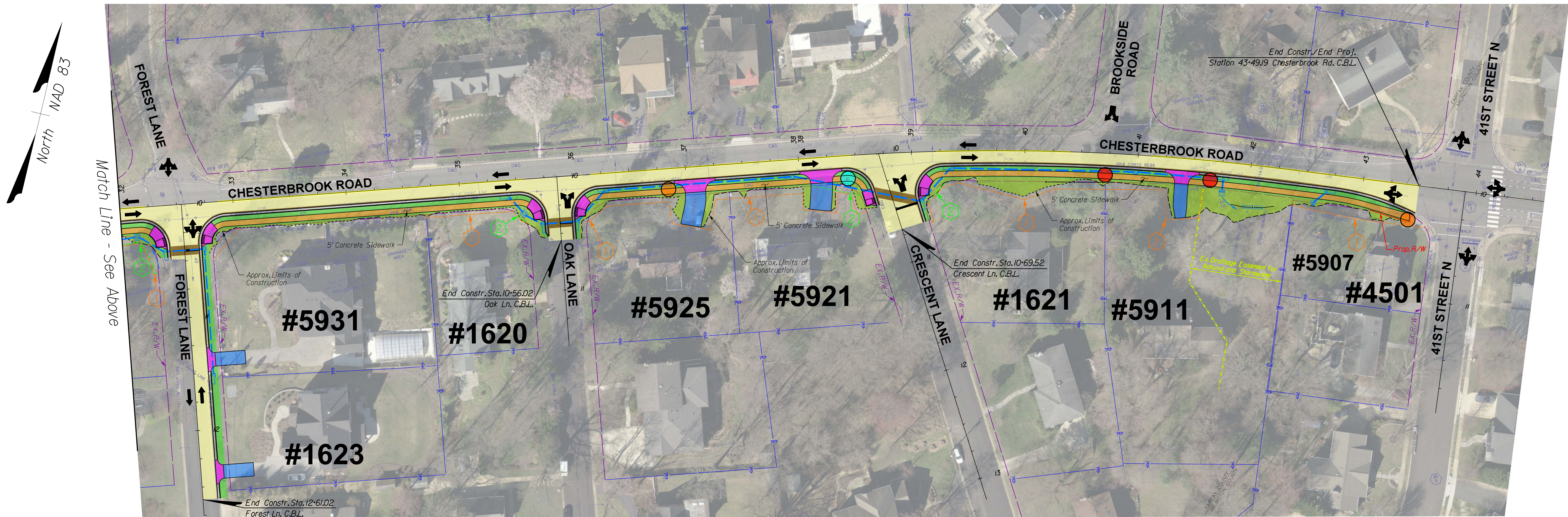
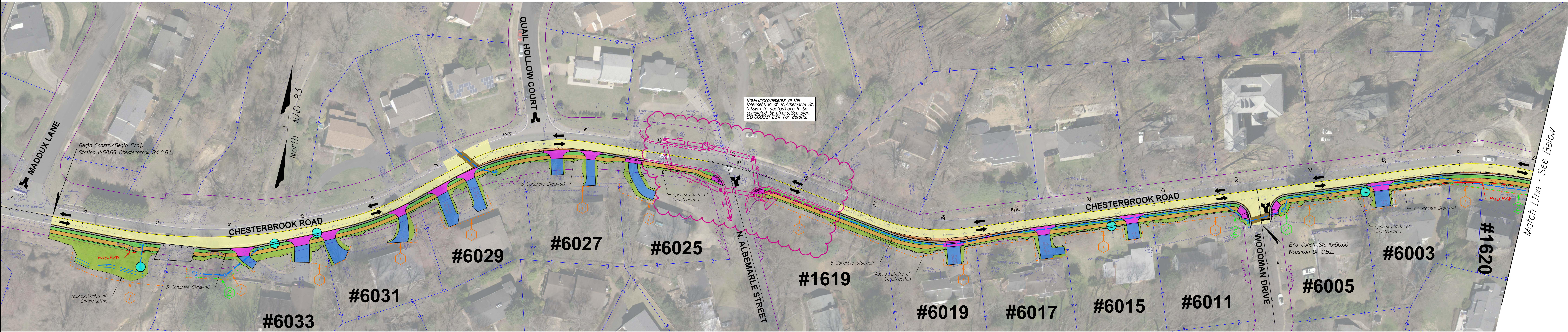




Chesterbrook Road Walkway - Maddux Lane to 41st Street

Citizen Information Meeting

Scale: 1" : 30'; November 2021



DESIGN LEGEND			
	PROP. MILL & OVERLAY		CONSTRUCTION LIMITS IN CUT
	PROP. FULL DEPTH PAVEMENT		CONSTRUCTION LIMITS IN FILL
	PROP. CONCRETE CURB RAMP/ APRON		DENOTES PROP. ROW
	PROP. ASPHALT DRIVEWAY		DENOTES PROPERTY LINE
	PROP. CONCRETE SIDEWALK		DENOTES EXIST. ROW
	PROP. GRASS BUFFER STRIP AND SHOULDER		DENOTES ADJACENT PROJECT, BY OTHERS
	PROP. GRADED TIE-IN SLOPES		
	PROP. EXTRA PAVEMENT DUE TO VEHICLE OFF-TRACKING		
	DENOTES POTENTIAL PERMANENT DRAINAGE EASEMENT		DENOTES POTENTIAL CONFLICT WITH EXIST. GAS
	DENOTES POTENTIAL TEMPORARY CONSTRUCTION EASE. AND GRADING AGREEMENT		DENOTES POTENTIAL CONFLICT WITH EXIST. SANITARY
	DENOTES POTENTIAL CONFLICT WITH EXIST. WATER		DENOTES POTENTIAL CONFLICT WITH EXIST. UTILITY POLE

