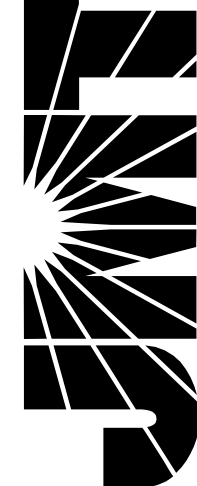


REVISED	STATE	STATE		SHEET NO.
		ROUTE	PROJECT	
	VA.		8102 - 029 - 065	3

DESIGN FEATURES RELATING TO CONSTRUCTION OR TO REGULATION AND CONTROL OF TRAFFIC MAY BE SUBJECT TO CHANGE AS DEEMED NECESSARY BY THE DEPARTMENT

Hassan Water Resources Maidens, Virginia HYDRAULIC ENGINEERING	Johnson, Mirmiran & Thompson Herndon, Virginia ROADWAY ENGINEER
----------------------------------------------------------------------	-----------------------------------------------------------------------

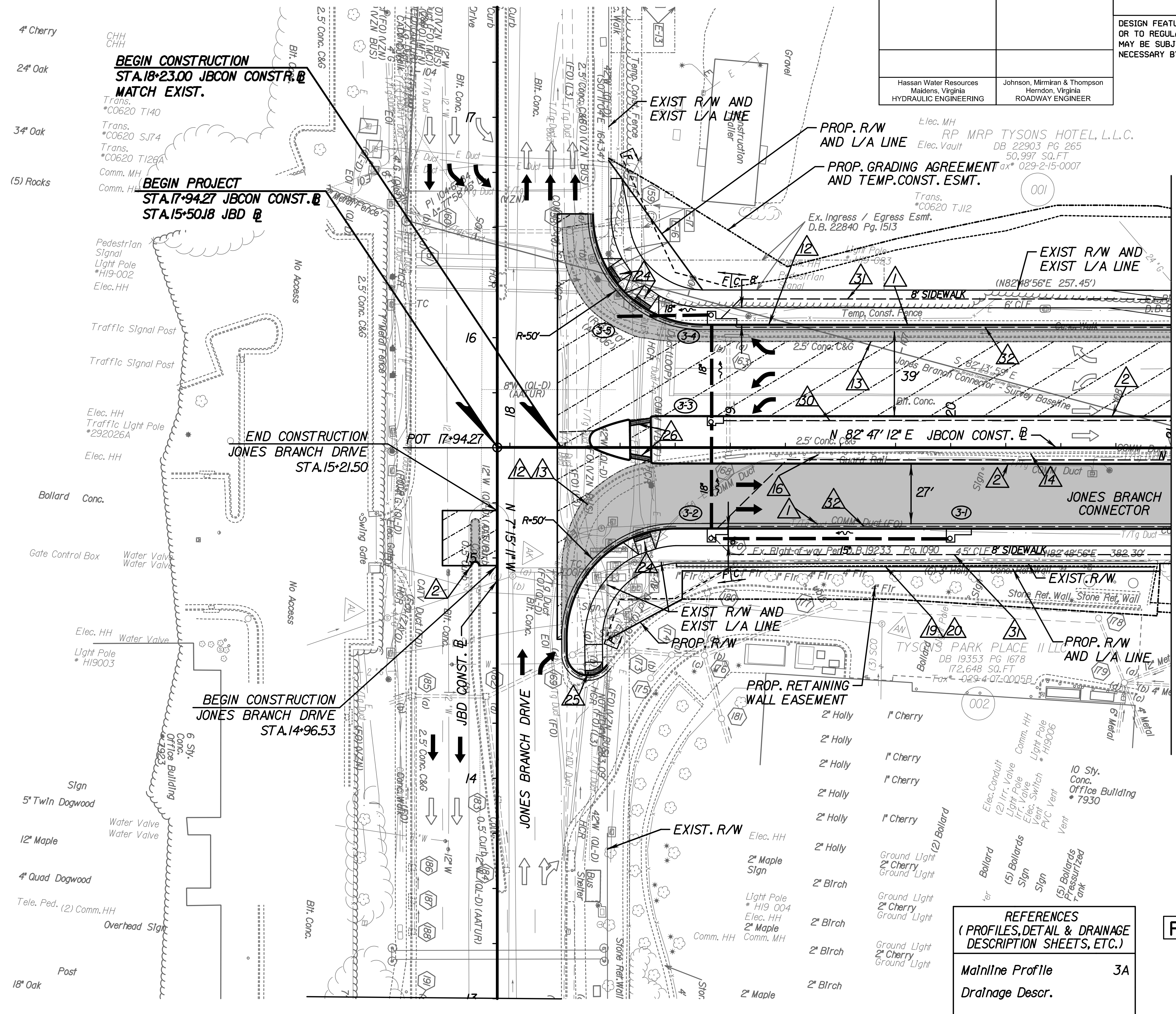


LEGEND

- ▲ STD. CG-6 REQ'D.
- ▲ STD. CG-2 REQ'D.
- ▲ REMOVE EXIST. SIDEWALK
- ▲ REMOVE EXIST. CURB & GUTTER
- ▲ REMOVE EXIST. CONC. BARRIER
- ▲ REMOVE EXIST. GUARDRAIL
- ▲ REMOVE EXIST. RET. WALL TO BE FLUSH WITH PROP. GRADE OF SIDEWALK
- ▲ STD. RETAINING WALL CAP
- ▲ STD. CG-12, TYPE A CURB RAMP
- ▲ STD. CG-12, TYPE B CURB RAMP
- ▲ STD. CG-12, TYPE MI
- ▲ STD. UD-2 REQ'D.
- ▲ STD. UD-3 REQ'D.
- ▲ STD. UD-4 REQ'D.

LEGEND

- C..... Denotes Construction Limits In Cuts
- F..... Denotes Construction Limits In Fills
- Denotes Temporary Easement
- Denotes Permanent Easement
- ▨ Denotes Demolition of Pavement
- ▩ Denotes Proposed Pavement
- ▩ Denotes Mill & Overlay Pavement
- ▩ Denotes Future Proposed Pavement
- ▩ Grasscrete
- ➔ Proposed Directional Arrow
- ➔ Existing Directional Arrow

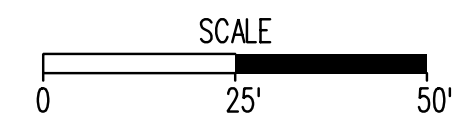


REFERENCES
 (PROFILES, DETAIL & DRAINAGE DESCRIPTION SHEETS, ETC.)

Mainline Profile	3A
Drainage Descr.	

PUBLIC HEARING PLANS

THESE PLANS ARE UNFINISHED AND UNAPPROVED AND ARE NOT TO BE USED FOR ANY TYPE OF CONSTRUCTION OR THE ACQUISITION OF RIGHT OF WAY.



ROADWAY PLANS

PROJECT	8102-029-065	SHEET NO.	3
---------	--------------	-----------	---

Matchline Sta. 2+00 Sheet 4

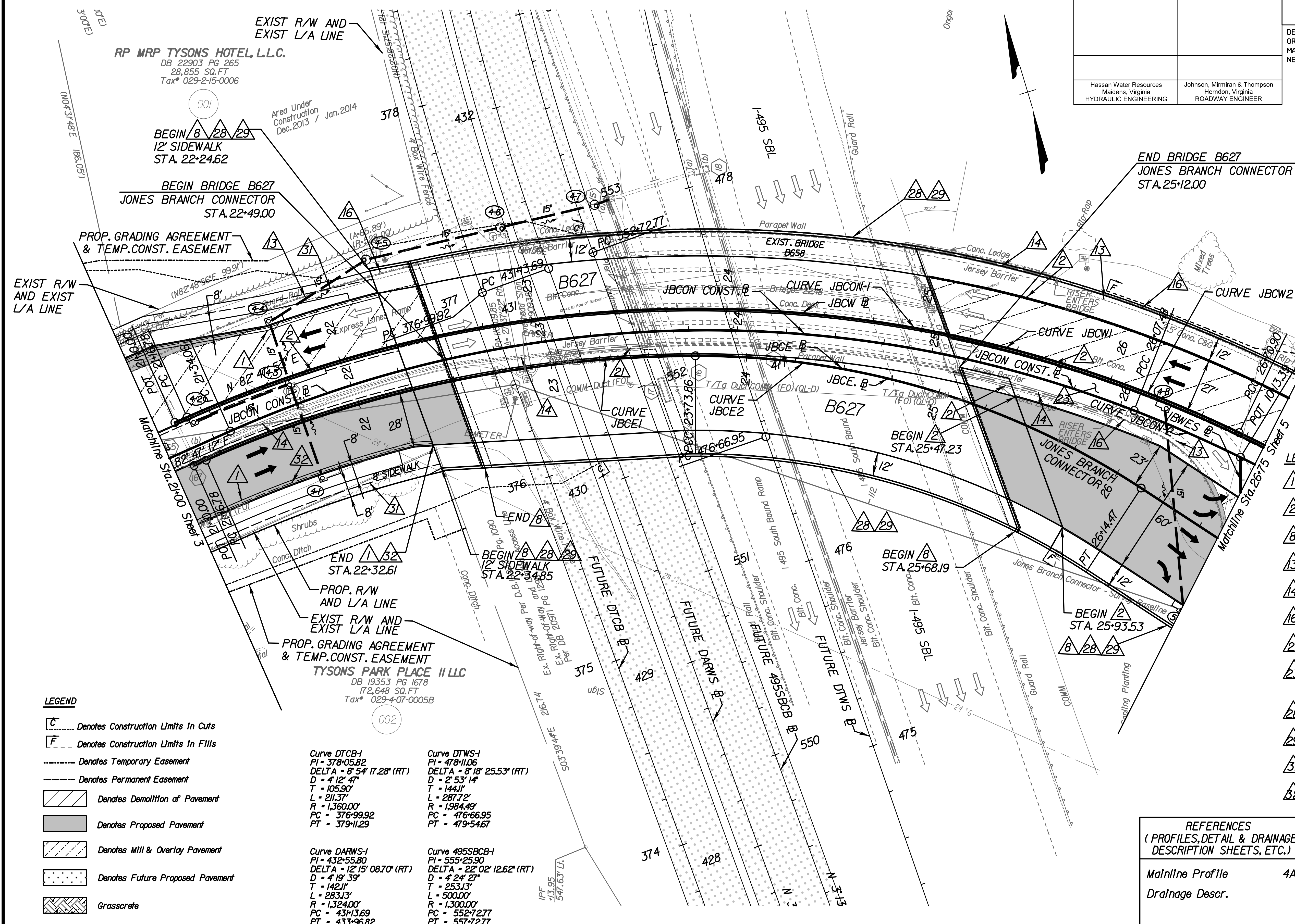
PROJECT MANAGER: John Dresser, P.E. (703) 877-5812
SURVEYED BY, DATE: Rice & Associates (703) 968-3200, 1/21/2014
DESIGN BY: Johnson, Mirmiran & Thompson, Inc. (703) 464-7369
SUBSURFACE UTILITY BY, DATE: So-Deep, Inc. (703) 361-6005, 2/15/2013

REVISED	STATE	ROUTE	PROJECT	SHEET NO.
	VA.		8102 - 029 - 065	4

DESIGN FEATURES RELATING TO CONSTRUCTION OR TO REGULATION AND CONTROL OF TRAFFIC MAY BE SUBJECT TO CHANGE AS DEEMED NECESSARY BY THE DEPARTMENT

Hassan Water Resources
Maidens, Virginia
HYDRAULIC ENGINEERING

Johnson, Mirmiran & Thompson
Herndon, Virginia
ROADWAY ENGINEER



<p>Curve JBCON-1 PI = 23+83.87 DELTA = 45° 12' 28.81" (RT) D = 9° 32' 57" T = 249.81' L = 473.42' R = 600.00' PC = 2+34.06 PT = 26+07.48</p>	<p>Curve JBCW-1 PI = 24+97.68 DELTA = 33° 22' 25.17" (RT) D = 13° 52' 13" T = 123.83' L = 240.61' R = 413.08' PC = 23+73.86 PT = 26+14.47</p>
<p>Curve JBCON-2 PI = 26+79.32 DELTA = 11° 55' 21.38" (RT) D = 8° 19' 40" T = 71.84' L = 143.17' R = 688.00' PC = 26+07.48 PT = 27+50.64</p>	<p>Curve JBCW-1 PI = 24+12.68 DELTA = 49° 45' 44.00" (RT) D = 8° 58' 50" T = 45.73' L = 55.41' R = 638.00' PC = 21+67.8 PT = 26+70.90</p>
<p>Curve JBCW-1 PI = 22+47.19 DELTA = 23° 45' 25.02" (RT) D = 9° 14' 29" T = 130.41' L = 257.07' R = 620.00' PC = 21+67.8 PT = 23+73.86</p>	<p>Curve JBCW-2 PI = 27+16.63 DELTA = 7° 29' 10.58" (RT) D = 8° 11' 49" T = 45.73' L = 91.33' R = 698.99' PC = 26+70.90 PT = 27+62.23</p>

- LEGEND**
- ① STD. CG-6 REQ'D.
 - ② STD. CG-2 REQ'D.
 - ③ MSE RETAINING WALL
 - ④ REMOVE EXIST. CURB & GUTTER
 - ⑤ REMOVE EXIST. CONC. BARRIER
 - ⑥ REMOVE EXIST. GUARDRAIL
 - ⑦ REMOVE EXIST. RET. WALL
 - ⑧ STANDARD SOLID CONCRETE RAISED MEDIAN STRIP (MS-1)
 - ⑨ GADOT VERTICAL FACE BARRIER (MODIFIED)
 - ⑩ CUSTOM ORNAMENTAL FENCE
 - ⑪ STD. UD-3 REQ'D.
 - ⑫ STD. UD-4 REQ'D.

REFERENCES
(PROFILES, DETAIL & DRAINAGE DESCRIPTION SHEETS, ETC.)

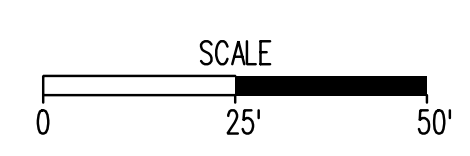
Mainline Profile 4A
Drainage Desc.

PUBLIC HEARING PLANS

THESE PLANS ARE UNFINISHED AND UNAPPROVED AND ARE NOT TO BE USED FOR ANY TYPE OF CONSTRUCTION OR THE ACQUISITION OF RIGHT OF WAY.

- LEGEND**
- C Denotes Construction Limits In Cuts
 - F Denotes Construction Limits In Fills
 - Denotes Temporary Easement
 - Denotes Permanent Easement
 - ▨ Denotes Demolition of Pavement
 - ▨ Denotes Proposed Pavement
 - ▨ Denotes Mill & Overlay Pavement
 - ▨ Denotes Future Proposed Pavement
 - ▨ Grasscrete
 - ➔ Proposed Directional Arrow
 - ➔ Existing Directional Arrow

<p>Curve DTCB-1 PI = 378+05.82 DELTA = 8° 54' 17.28" (RT) D = 4° 12' 47" T = 105.90' L = 211.37' R = 1,360.00' PC = 376+99.92 PT = 379+11.29</p>	<p>Curve DTWS-1 PI = 478+11.06 DELTA = 8° 18' 25.53" (RT) D = 2° 53' 14" T = 144.11' L = 287.72' R = 1,984.49' PC = 476+66.95 PT = 479+54.67</p>
<p>Curve DARWS-1 PI = 432+55.80 DELTA = 12° 15' 08.70" (RT) D = 4° 19' 39" T = 142.11' L = 283.13' R = 1,324.00' PC = 431+13.69 PT = 433+96.82</p>	<p>Curve 495SBCB-1 PI = 555+25.90 DELTA = 22° 02' 12.62" (RT) D = 4° 24' 27" T = 253.13' L = 500.00' R = 1,300.00' PC = 552+72.77 PT = 557+72.77</p>



PROJECT MANAGER: John Dresser, P.E. (703) 877-5812
SURVEYED BY, DATE: Rice & Associates (703) 968-3200, 1/21/2014
DESIGN BY: Johnson, Mirmiran & Thompson, Inc. (703) 464-7369
SUBSURFACE UTILITY BY, DATE: So-Deep, Inc. (703) 361-6005, 2/15/2013

Curve JBCON-2
PI = 2679.32
DELTA = 11° 55' 21.38" (RT)
D = 8' 19' 40"
T = 71.84'
L = 143.17'
R = 688.00'
PCC = 26+07.48
PT = 27+50.64

Curve JBCW-2
PI = 27+16.63
DELTA = 7° 29' 10.58" (RT)
D = 8' 11' 49"
T = 45.73'
L = 91.33'
R = 698.99'
PCC = 26+70.90
PT = 27+62.23

Curve JBCE-3
PI = 29+56.37
DELTA = 12° 02' 38.93" (LT)
D = 15' 09' 27"
T = 39.88'
L = 79.46'
R = 378.00'
PCC = 29+16.49
PT = 29+95.95

Curve JBCON-3
PI = 31+33.18
DELTA = 12° 02' 38.93" (LT)
D = 4' 46' 29"
T = 126.59'
L = 252.25'
R = 1200.00'
PCC = 30+06.59
PT = 32+58.84

Curve JBCW-3
PI = 31+53.37
DELTA = 13° 26' 16.90" (LT)
D = 4' 46' 29"
T = 141.37'
L = 281.45'
R = 1200.00'
PCC = 30+12.00
PT = 32+93.44

REVISED	STATE	ROUTE	PROJECT	SHEET NO.
	VA.		8102 - 029 - 065	5

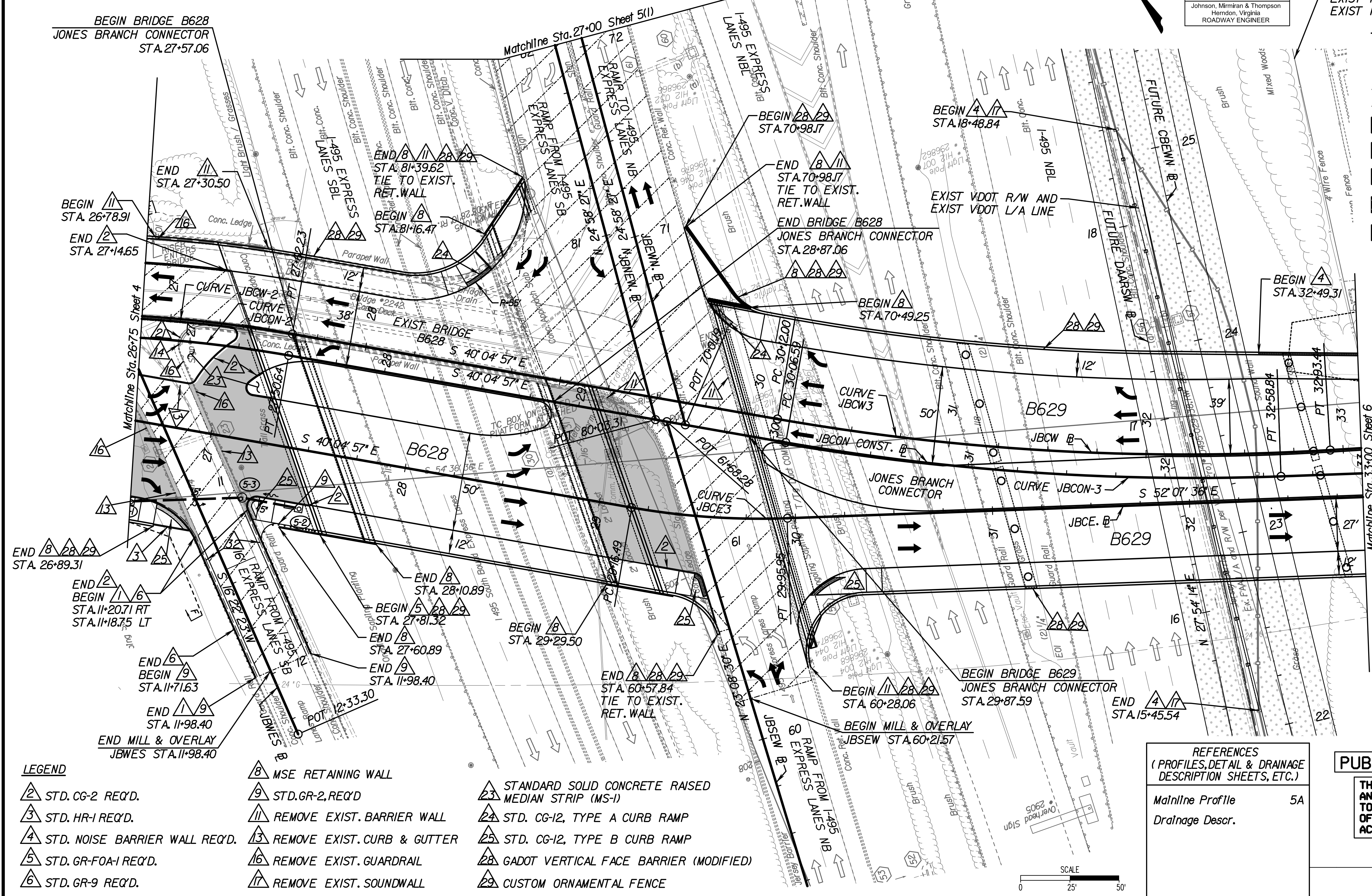
DESIGN FEATURES RELATING TO CONSTRUCTION OR TO REGULATION AND CONTROL OF TRAFFIC MAY BE SUBJECT TO CHANGE AS DEEMED NECESSARY BY THE DEPARTMENT

EXIST FAA R/W AND
EXIST FAA L/A LINE

Johnson, Mirmiran & Thompson
Herndon, Virginia
ROADWAY ENGINEER

LEGEND

- Denotes Construction Limits In Cuts
- Denotes Construction Limits In Fills
- Denotes Temporary Easement
- Denotes Permanent Easement
- Denotes Demolition of Pavement
- Denotes Proposed Pavement
- Denotes Mill & Overlay Pavement
- Denotes Future Proposed Pavement
- Denotes Grasscrete
- Proposed Directional Arrow
- Existing Directional Arrow



LEGEND

- STD. CG-2 REQ'D.
- STD. HR-1 REQ'D.
- STD. NOISE BARRIER WALL REQ'D.
- STD. GR-FOA-I REQ'D.
- STD. GR-9 REQ'D.
- MSE RETAINING WALL
- STD. GR-2, REQ'D
- REMOVE EXIST. BARRIER WALL
- REMOVE EXIST. CURB & GUTTER
- REMOVE EXIST. GUARDRAIL
- REMOVE EXIST. SOUNDWALL
- STANDARD SOLID CONCRETE RAISED MEDIAN STRIP (MS-1)
- STD. CG-12, TYPE A CURB RAMP
- STD. CG-12, TYPE B CURB RAMP
- GADOT VERTICAL FACE BARRIER (MODIFIED)
- CUSTOM ORNAMENTAL FENCE

REFERENCES
(PROFILES, DETAIL & DRAINAGE DESCRIPTION SHEETS, ETC.)

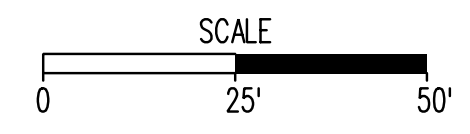
Mainline Profile 5A
Drainage Desc.

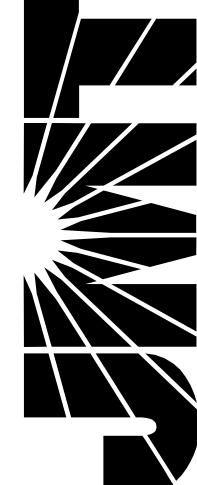
PUBLIC HEARING PLANS

THESE PLANS ARE UNFINISHED AND UNAPPROVED AND ARE NOT TO BE USED FOR ANY TYPE OF CONSTRUCTION OR THE ACQUISITION OF RIGHT OF WAY.

ROADWAY PLANS

PROJECT	SHEET NO.
8102-029-065	5





PROJECT MANAGER: John Dresser, P.E. (703) 877-5812
SURVEYED BY, DATE: Rice & Associates (703) 968-3200, 1/21/2014
DESIGN BY: Johnson, Miriran & Thompson, Inc. (703) 464-7369
SUBSURFACE UTILITY BY, DATE: So-Deep, Inc. (703) 361-6005, 2/15/2013

LEGEND

- △ STD. CG-6 REQ'D.
- △ STD. CG-2 REQ'D.
- △ STD. HR-1 REQ'D.
- △ STD. NOISE BARRIER WALL REQ'D.
- △ MSE RETAINING WALL
- △ REMOVE EXIST. SIDEWALK
- △ REMOVE EXIST. CURB & GUTTER
- △ REMOVE EXIST. CONC. ISLAND
- △ STD. CG-12, TYPE A CURB RAMP
- △ STD. CG-12, TYPE MI
- △ GADOT VERTICAL FACE BARRIER (MODIFIED)
- △ CUSTOM ORNAMENTAL FENCE
- △ STD. UD-2 REQ'D.
- △ STD. UD-3 REQ'D.
- △ STD. UD-4 REQ'D.
- △ CUSTOM STONE WALL

REVISED	STATE	ROUTE	PROJECT	SHEET NO.
	VA.		8102 - 029 - 065	6

DESIGN FEATURES RELATING TO CONSTRUCTION OR TO REGULATION AND CONTROL OF TRAFFIC MAY BE SUBJECT TO CHANGE AS DEEMED NECESSARY BY THE DEPARTMENT

Hassan Water Resources
Maidens, Virginia
HYDRAULIC ENGINEERING

Johnson, Miriran & Thompson
Herndon, Virginia
ROADWAY ENGINEER

LEGEND

- C Denotes Construction Limits In Cuts
- F Denotes Construction Limits In Fills
- Denotes Temporary Easement
- Denotes Permanent Easement
- ▨ Denotes Demolition of Pavement
- ▨ Denotes Proposed Pavement
- ▨ Denotes Mill & Overlay Pavement
- ▨ Denotes Future Proposed Pavement
- ▨ Grasscrete
- ➔ Proposed Directional Arrow
- ➔ Existing Directional Arrow

Curve CAPSRVC-4
PI = 20+50.72
DELTA = 19° 06' 22.67" (RT)
D = 20' 59' 15"
T = 45.94'
L = 91.04'
R = 273.00'
PC = 20+04.77
PRC = 20+95.81

Curve JBCW-4
PI = 37+73.21
DELTA = 8° 31' 42.32" (LT)
D = 11' 27' 33"
T = 37.28'
L = 74.42'
R = 500.00'
PC = 37+35.93
PT = 38+10.35

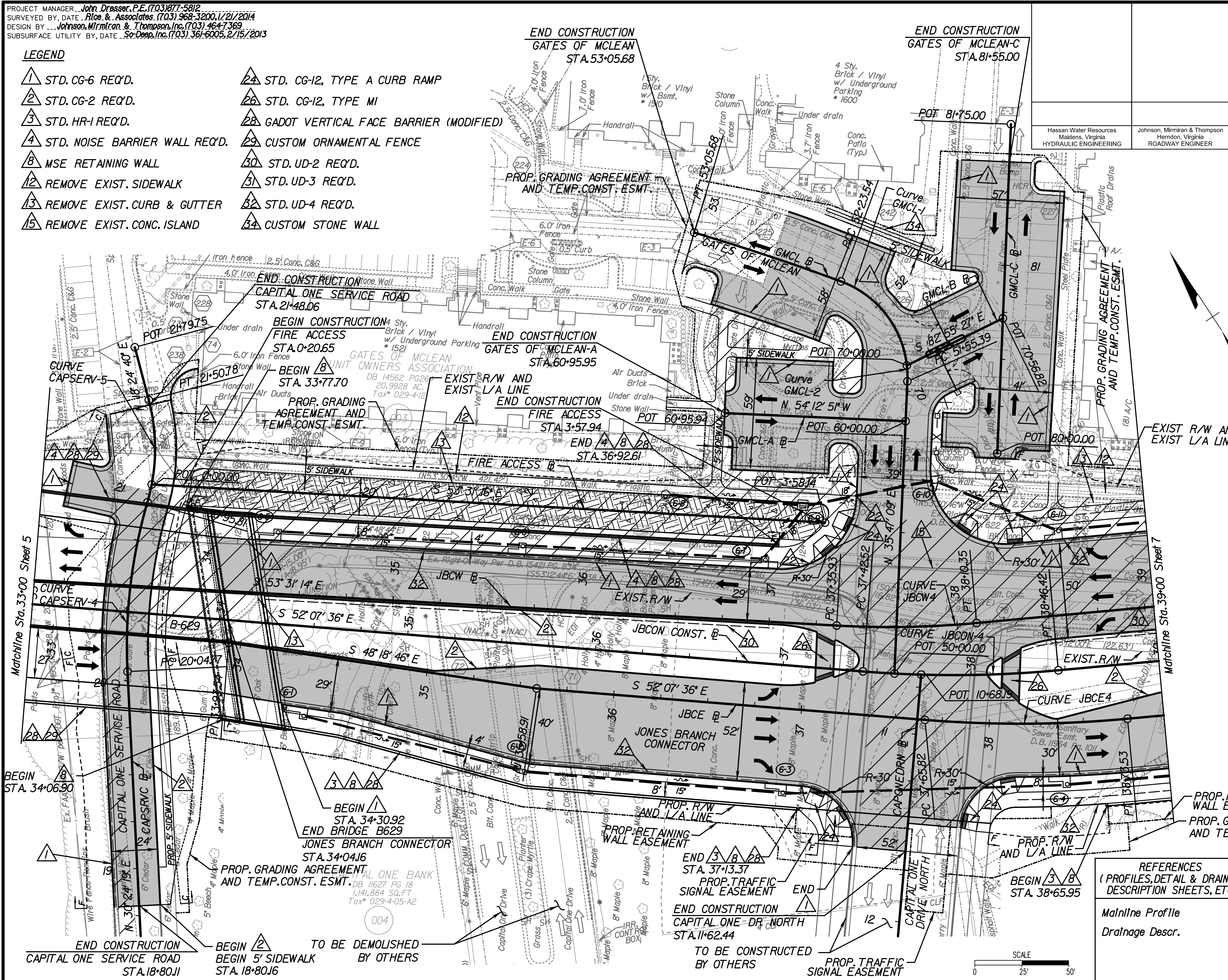
Curve CAPSRVC-5
PI = 21+23.99
DELTA = 31° 06' 02.04" (LT)
D = 56' 34' 30"
T = 28.18'
L = 54.97'
R = 101.27'
PC = 20+95.81
PT = 21+50.78

Curve JBCON-4
PI = 37+94.60
DELTA = 9° 55' 20.30" (LT)
D = 9' 32' 57"
T = 52.08'
L = 103.91'
R = 600.00'
PC = 37+42.52
PT = 38+46.42

Curve GMCL-1
PI = 51+94.84
DELTA = 72° 18' 10.33" (LT)
D = 106' 06' 12"
T = 39.45'
L = 68.14'
R = 54.00'
PC = 51+55.39
PCC = 52+23.54

Curve JBCE-4
PI = 38+19.81
DELTA = 9° 55' 20.30" (LT)
D = 9' 12' 42"
T = 53.99'
L = 107.72'
R = 622.00'
PC = 37+65.82
PT = 38+73.53

Curve GMCL-2
PI = 52+64.62
DELTA = 3° 39' 05.42" (LT)
D = 4' 26' 42"
T = 4.09'
L = 82.15'
R = 1,289.00'
PCC = 52+23.54
PT = 53+05.68



REFERENCES
(PROFILES, DETAIL & DRAINAGE DESCRIPTION SHEETS, ETC.)

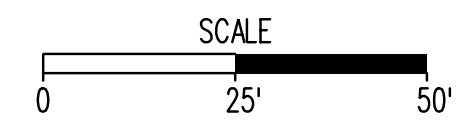
Mainline Profile	6A
Drainage Descr.	

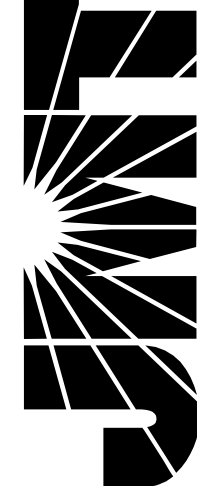
PUBLIC HEARING PLANS

THESE PLANS ARE UNFINISHED AND UNAPPROVED AND ARE NOT TO BE USED FOR ANY TYPE OF CONSTRUCTION OR THE ACQUISITION OF RIGHT OF WAY.

ROADWAY PLANS

PROJECT	SHEET NO.
8102-029-065	6





PROJECT MANAGER: John Dresser, P.E. (703) 877-5812
SURVEYED BY, DATE: Rice & Associates (703) 968-3200, 1/21/2014
DESIGN BY: Johnson, Miriran & Thompson, Inc. (703) 464-7369
SUBSURFACE UTILITY BY, DATE: So-Deep, Inc. (703) 361-6005, 2/15/2013

REVISED	STATE	ROUTE	PROJECT	SHEET NO.
	VA.		8102 - 029 - 065	7

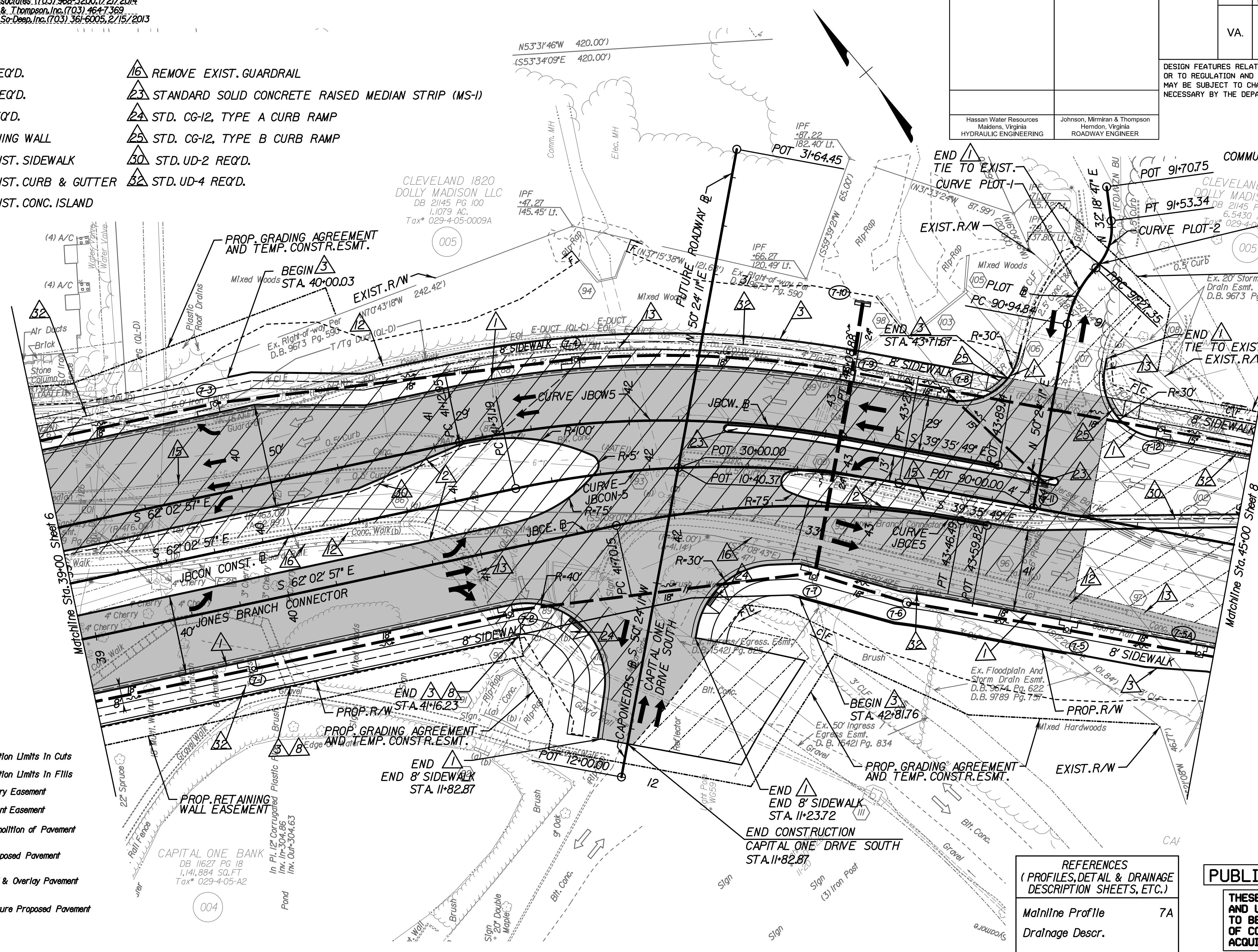
DESIGN FEATURES RELATING TO CONSTRUCTION OR TO REGULATION AND CONTROL OF TRAFFIC MAY BE SUBJECT TO CHANGE AS DEEMED NECESSARY BY THE DEPARTMENT

Hassan Water Resources
Maidens, Virginia
HYDRAULIC ENGINEERING

Johnson, Miriran & Thompson
Herndon, Virginia
ROADWAY ENGINEER

LEGEND

- 1 STD. CG-6 REQ'D.
- 2 STD. CG-2 REQ'D.
- 3 STD. HR-1 REQ'D.
- 8 MSE RETAINING WALL
- 12 REMOVE EXIST. SIDEWALK
- 13 REMOVE EXIST. CURB & GUTTER
- 15 REMOVE EXIST. CONC. ISLAND
- 16 REMOVE EXIST. GUARDRAIL
- 23 STANDARD SOLID CONCRETE RAISED MEDIAN STRIP (MS-1)
- 24 STD. CG-12, TYPE A CURB RAMP
- 25 STD. CG-12, TYPE B CURB RAMP
- 30 STD. UD-2 REQ'D.
- 32 STD. UD-4 REQ'D.



Curve PLOT-1
PI = 9+11.57
DELTA = 33° 15' 30.28" (RT)
D = 102' 18" 50"
T = 167.3'
L = 32.5'
R = 56.00'
PC = 90+94.84
PRC = 9+27.35

Curve PLOT-2
PI = 9+41.29
DELTA = 51° 20' 54.19" (LT)
D = 197' 34' 18"
T = 13.94'
L = 25.99'
R = 29.00'
PC = 9+27.35
PT = 9+53.34

Curve JBCW-5
PI = 42+12.19
DELTA = 22° 27' 07.69" (RT)
D = 11' 27' 33"
T = 99.24'
L = 195.93'
R = 500.00'
PC = 4+12.95
PT = 43+08.88

Curve JBCON-5
PI = 42+30.43
DELTA = 22° 27' 07.69" (RT)
D = 11' 27' 33"
T = 99.24'
L = 195.93'
R = 500.00'
PC = 4+31.19
PT = 43+27.12

Curve JBCOE-5
PI = 42+59.46
DELTA = 22° 27' 07.69" (RT)
D = 12' 43' 57"
T = 89.32'
L = 176.34'
R = 450.00'
PC = 4+70.15
PT = 43+46.49

LEGEND

- Denotes Construction Limits In Cuts
- Denotes Construction Limits In Fills
- Denotes Temporary Easement
- Denotes Permanent Easement
- Denotes Demolition of Pavement
- Denotes Proposed Pavement
- Denotes Mill & Overlay Pavement
- Denotes Future Proposed Pavement
- Grasscrete
- Proposed Directional Arrow
- Existing Directional Arrow

REFERENCES
(PROFILES, DETAIL & DRAINAGE DESCRIPTION SHEETS, ETC.)

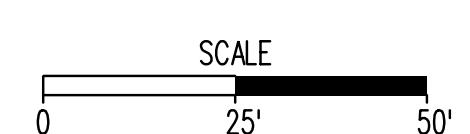
Mainline Profile 7A
Drainage Descr.

PUBLIC HEARING PLANS

THESE PLANS ARE UNFINISHED AND UNAPPROVED AND ARE NOT TO BE USED FOR ANY TYPE OF CONSTRUCTION OR THE ACQUISITION OF RIGHT OF WAY.

ROADWAY PLANS

PROJECT	SHEET NO.
8102-029-065	7



PROJECT MANAGER: John Dresser, P.E. (703) 877-5812
SURVEYED BY, DATE: Rice & Associates (703) 968-3200, 1/21/2014
DESIGN BY: Johnson, Mirmiran & Thompson, Inc. (703) 464-7369
SUBSURFACE UTILITY BY, DATE: So-Deep, Inc. (703) 361-6005, 2/15/2013

LEGEND

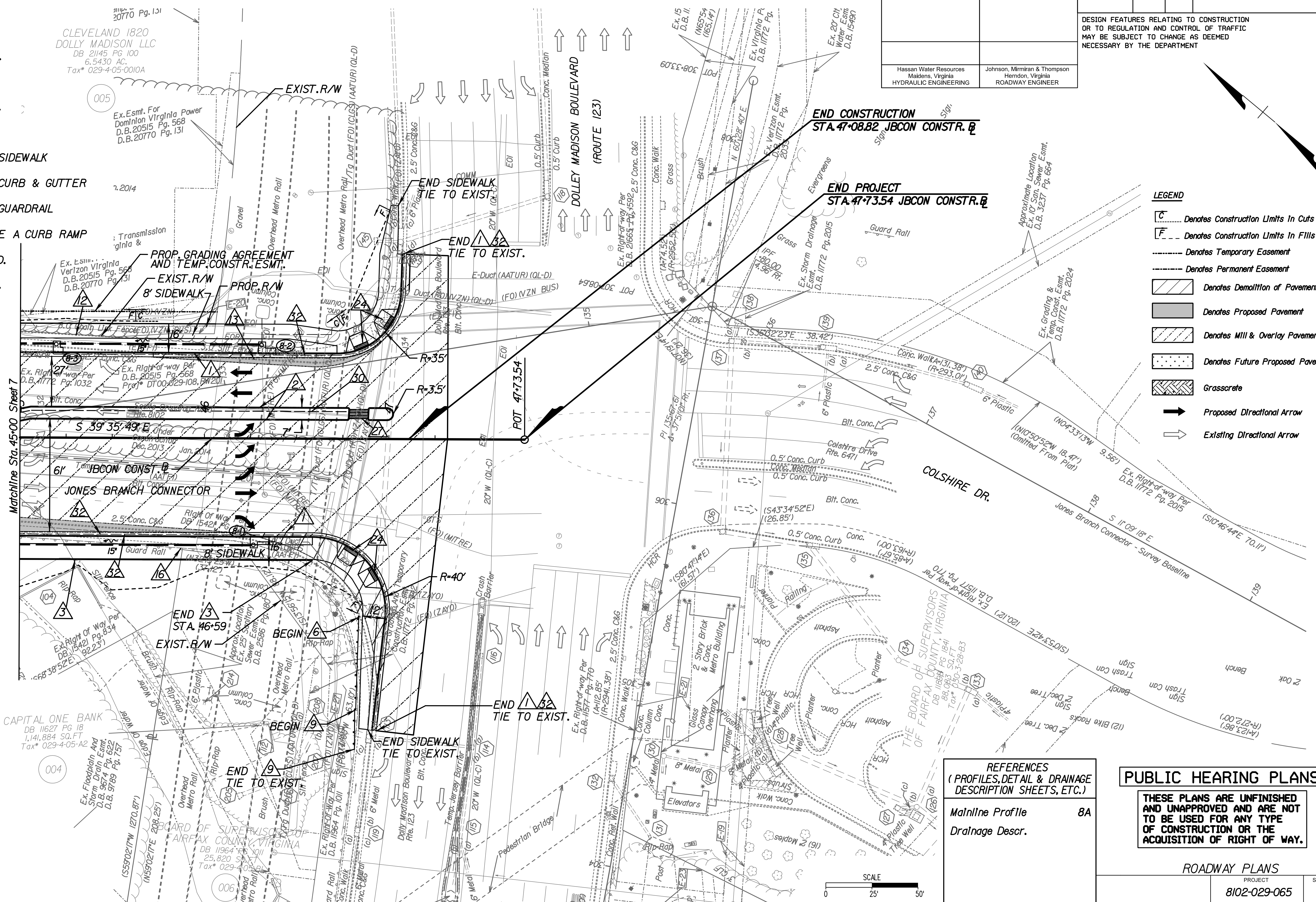
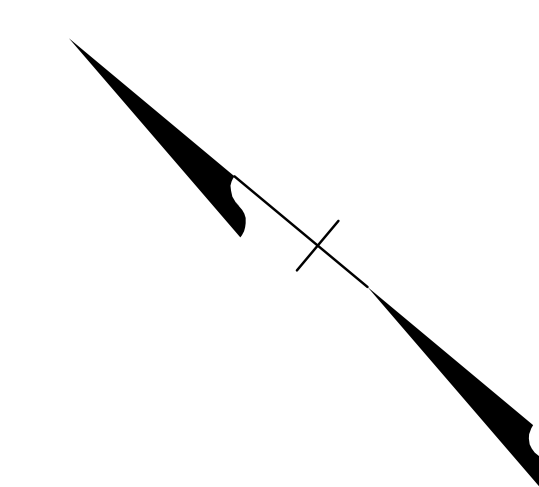
- ▲ STD. CG-6 REQ'D.
- ▲ STD. CG-2 REQ'D.
- ▲ STD. HR-1 REQ'D.
- ▲ STD. GR-9 REQ'D.
- ▲ STD. GR-2, REQ'D
- ▲ REMOVE EXIST. SIDEWALK
- ▲ REMOVE EXIST. CURB & GUTTER
- ▲ REMOVE EXIST. GUARDRAIL
- ▲ STD. CG-12, TYPE A CURB RAMP
- ▲ STD. UD-2 REQ'D.
- ▲ STD. UD-4 REQ'D.

REVISED	STATE	ROUTE	PROJECT	SHEET NO.
	VA.		8102 - 029 - 065	8

DESIGN FEATURES RELATING TO CONSTRUCTION OR TO REGULATION AND CONTROL OF TRAFFIC MAY BE SUBJECT TO CHANGE AS DEEMED NECESSARY BY THE DEPARTMENT

Hassan Water Resources
Maidens, Virginia
HYDRAULIC ENGINEERING

Johnson, Mirmiran & Thompson
Herndon, Virginia
ROADWAY ENGINEER



LEGEND

- C Denotes Construction Limits In Cuts
- F Denotes Construction Limits In Fills
- Denotes Temporary Easement
- Denotes Permanent Easement
- ▨ Denotes Demolition of Pavement
- ▨ Denotes Proposed Pavement
- ▨ Denotes Mill & Overlay Pavement
- ▨ Denotes Future Proposed Pavement
- ▨ Denotes Grasscrete
- ➔ Proposed Directional Arrow
- ➔ Existing Directional Arrow

REFERENCES
(PROFILES, DETAIL & DRAINAGE DESCRIPTION SHEETS, ETC.)

Mainline Profile 8A
Drainage Descr.

PUBLIC HEARING PLANS

THESE PLANS ARE UNFINISHED AND UNAPPROVED AND ARE NOT TO BE USED FOR ANY TYPE OF CONSTRUCTION OR THE ACQUISITION OF RIGHT OF WAY.

ROADWAY PLANS

PROJECT 8102-029-065
SHEET NO. 8

