

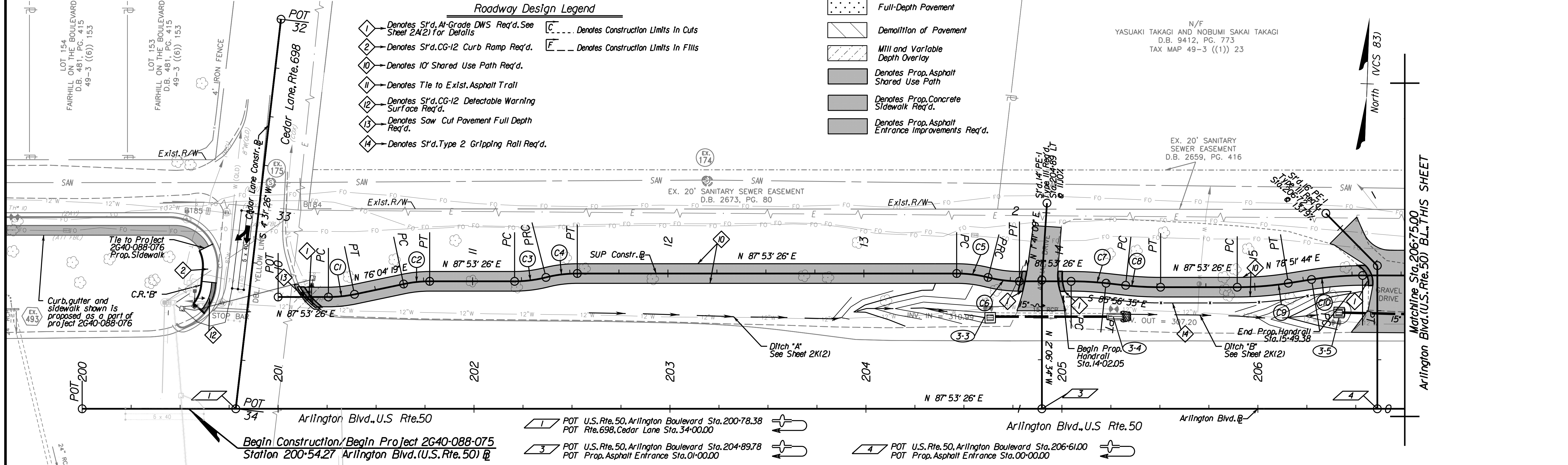
PROJECT MANAGER: Fairfax Co. Dept. of Transportation, Dennis Marsh, (703) 877-5746  
SURVEYED BY: DATE: Fairfax County, L.S. Vickie Argith, L.S. (703) 324-5151, June, 2019  
DESIGN BY: Rinker Design Associates, P.C., Adam Welschenbach, P.E., (703) 368-7373  
SUBSURFACE UTILITY BY: DATE: TBD

### Roadway Design Legend

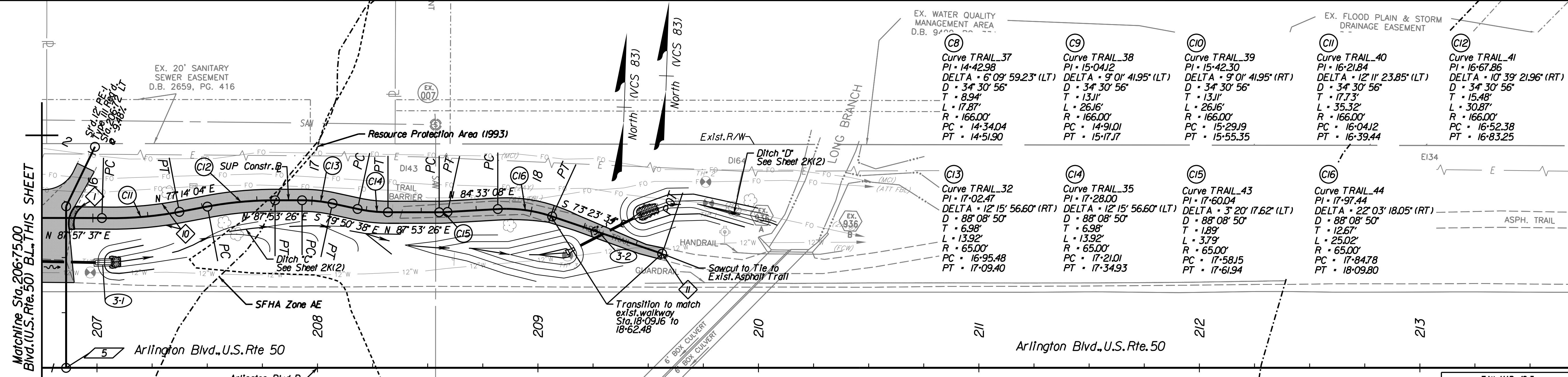
- ① Denotes S'd. At-Grade DWS Req'd. See Sheet 2A(2) For Details
- ② Denotes S'd. CG-12 Curb Ramp Req'd.
- ③ Denotes 10' Shared Use Path Req'd.
- ④ Denotes Tie to Exist. Asphalt Trail
- ⑤ Denotes S'd. CG-12 Detectable Warning Surface Req'd.
- ⑥ Denotes Saw Cut Pavement Full Depth Req'd.
- ⑦ Denotes S'd. Type 2 Gripping Rail Req'd.
- ⑧ Denotes Construction Limits In Cuts
- ⑨ Denotes Construction Limits In Fills

### PAVEMENT LEGEND

- Full-Depth Pavement
- Demolition of Pavement
- Mill and Variable Depth Overlay
- Denotes Prop. Asphalt Shared Use Path
- Denotes Prop. Concrete Sidewalk Req'd.
- Denotes Prop. Asphalt Entrance Improvements Req'd.



- ① POT U.S. Rte. 50, Arlington Boulevard Sta. 200-78.38  
POT Rte. 698, Cedar Lane Sta. 34-00.00
- ③ POT U.S. Rte. 50, Arlington Boulevard Sta. 204-89.78  
POT Prop. Asphalt Entrance Sta. 01-00.00
- ④ POT U.S. Rte. 50, Arlington Boulevard Sta. 206-61.00  
POT Prop. Asphalt Entrance Sta. 00-00.00



- ① POT U.S. Rte. 50, Arlington Boulevard Sta. 206-86.00  
POT Prop. Asphalt Entrance Sta. 01-00.00
- ⑤ Curve TRAIL\_3  
PI - 10-32.39  
DELTA - 11° 49' 07.27" (LT)  
D - 88' 08' 50"  
T - 67.3'  
L - 13.41'  
R - 65.00'  
PC - 10-25.66  
PT - 10-39.07
- ⑥ Curve TRAIL\_6  
PI - 10-71.40  
DELTA - 11° 49' 07.27" (RT)  
D - 88' 08' 50"  
T - 67.3'  
L - 13.41'  
R - 65.00'  
PC - 10-64.67  
PT - 10-78.08
- ⑦ Curve TRAIL\_9  
PI - 11-29.54  
DELTA - 14° 15' 00.12" (LT)  
D - 88' 08' 50"  
T - 81.3'  
L - 16.17'  
R - 65.00'  
PC - 11-21.42  
PT - 11-37.58
- ⑧ Curve TRAIL\_10  
PI - 11-45.71  
DELTA - 14° 15' 00.12" (RT)  
D - 88' 08' 50"  
T - 81.3'  
L - 16.17'  
R - 65.00'  
PC - 13-47.38  
PT - 11-53.75
- ⑨ Curve TRAIL\_13  
PI - 13-55.50  
DELTA - 14° 15' 00.12" (RT)  
D - 88' 08' 50"  
T - 81.2'  
L - 16.17'  
R - 65.00'  
PC - 13-47.38  
PT - 13-63.55
- ⑩ Curve TRAIL\_14  
PI - 13-71.67  
DELTA - 14° 15' 00.12" (LT)  
D - 88' 08' 50"  
T - 81.3'  
L - 16.17'  
R - 65.00'  
PC - 13-63.55  
PT - 13-79.71
- ⑪ Curve TRAIL\_36  
PI - 14-15.07  
DELTA - 6° 09' 59.22" (RT)  
D - 34' 30' 56"  
T - 8.94'  
L - 17.87'  
R - 166.00'  
PC - 14-06.13  
PT - 14-23.99
- ⑫ Curve TRAIL\_37  
PI - 14-42.98  
DELTA - 6° 09' 59.23" (LT)  
D - 34' 30' 56"  
T - 8.94'  
L - 17.87'  
R - 166.00'  
PC - 14-34.04  
PT - 14-51.90
- ⑬ Curve TRAIL\_38  
PI - 15-04.12  
DELTA - 9° 01' 41.95" (LT)  
D - 34' 30' 56"  
T - 13.11'  
L - 26.16'  
R - 166.00'  
PC - 14-91.01  
PT - 15-17.17
- ⑭ Curve TRAIL\_39  
PI - 15-42.30  
DELTA - 9° 01' 41.95" (RT)  
D - 34' 30' 56"  
T - 13.11'  
L - 26.16'  
R - 166.00'  
PC - 15-29.19  
PT - 15-55.35
- ⑮ Curve TRAIL\_40  
PI - 16-21.84  
DELTA - 12° 11' 23.85" (LT)  
D - 34' 30' 56"  
T - 17.73'  
L - 35.32'  
R - 166.00'  
PC - 16-04.12  
PT - 16-39.44
- ⑯ Curve TRAIL\_41  
PI - 16-67.86  
DELTA - 10° 39' 21.96" (RT)  
D - 34' 30' 56"  
T - 15.48'  
L - 30.87'  
R - 166.00'  
PC - 16-52.38  
PT - 16-83.25
- ⑰ Curve TRAIL\_32  
PI - 17-02.47  
DELTA - 12° 15' 56.60" (RT)  
D - 88' 08' 50"  
T - 6.98'  
L - 13.92'  
R - 65.00'  
PC - 16-95.48  
PT - 17-09.40
- ⑱ Curve TRAIL\_35  
PI - 17-28.00  
DELTA - 12° 15' 56.60" (LT)  
D - 88' 08' 50"  
T - 6.98'  
L - 13.92'  
R - 65.00'  
PC - 17-21.01  
PT - 17-34.93
- ⑲ Curve TRAIL\_43  
PI - 17-60.44  
DELTA - 3° 20' 17.62" (LT)  
D - 88' 08' 50"  
T - 1.89'  
L - 3.79'  
R - 65.00'  
PC - 17-58.15  
PT - 17-61.94
- ⑳ Curve TRAIL\_44  
PI - 17-97.44  
DELTA - 22° 03' 18.05" (RT)  
D - 88' 08' 50"  
T - 12.67'  
L - 25.02'  
R - 65.00'  
PC - 17-84.78  
PT - 18-09.80

COMMONWEALTH OF VIRGINIA  
PROFESSIONAL ENGINEER  
ADAM D. WELSCHENBACH  
Lic. No. 0443359

Adam 2021.08.26  
Welschenbach 17:46:16-04'00"

Rinker Design Associates, P.C.  
Manassas, Virginia  
PROFESSIONAL ENGINEER

EMERGENCY POLICE - FIRE - RESCUE 911			
FAIRFAX COUNTY, VIRGINIA DEPT. OF PUBLIC WORKS & ENVIRONMENTAL SERVICES - UTILITIES DESIGN & CONSTRUCTION DIVISION 12000 GOVERNMENT CENTER PARKWAY, SUITE 463 FAIRFAX, VA., 22035-0052			
OFFICE OF CAPITAL FACILITIES 703-324-5800			
ROUTE 50 WALKWAY IMPROVEMENTS CEDAR TO PROSPERITY PLAN SHEET (1 of 2)			
PROVIDENCE DISTRICT, FAIRFAX COUNTY, VIRGINIA			
CONTRACT NO. CN-2021-000000		PROJECT NO. 2640-088-075	
SCALE HORIZ. 1"=25' VERT. N/A	DESIGNED BY: ADW.P.E. DRAFTED BY: JRB CHECKED BY: ADW.P.E.	SHEET 3	
DESCRIPTION	BY	APPROVED	DATE

Note: Contractor is responsible to protect from harm or replace under licensed land surveyor all property monumentation disturbed by construction.

Rinker Design Associates, P.C.  
Civil Engineering - Surveying - Land Planning  
Transportation - Highways - Highways  
Highway Surveying

PROJECT MANAGER: Fairfax Co. Dept. of Transportation, Dennis Marsh (703) 877-5746  
SURVEYED BY, DATE: Fairfax County, LSB, Vickie Anglin, S. (703) 324-5151, June, 2019  
DESIGN BY: Rinker Design Associates, P.C., Adam Welschenbach, P.E., (703) 368-7373  
SUBSURFACE UTILITY BY, DATE: TBD

PARCEL "A"  
THE RETREAT AT SYCAMORE RIDGE  
D.B. 9490, PG. 334  
TAX MAP 49-3 ((30)) A

PARCEL "A"  
THE RETREAT AT SYCAMORE RIDGE  
D.B. 9490, PG. 334  
TAX MAP 49-3 ((30)) A

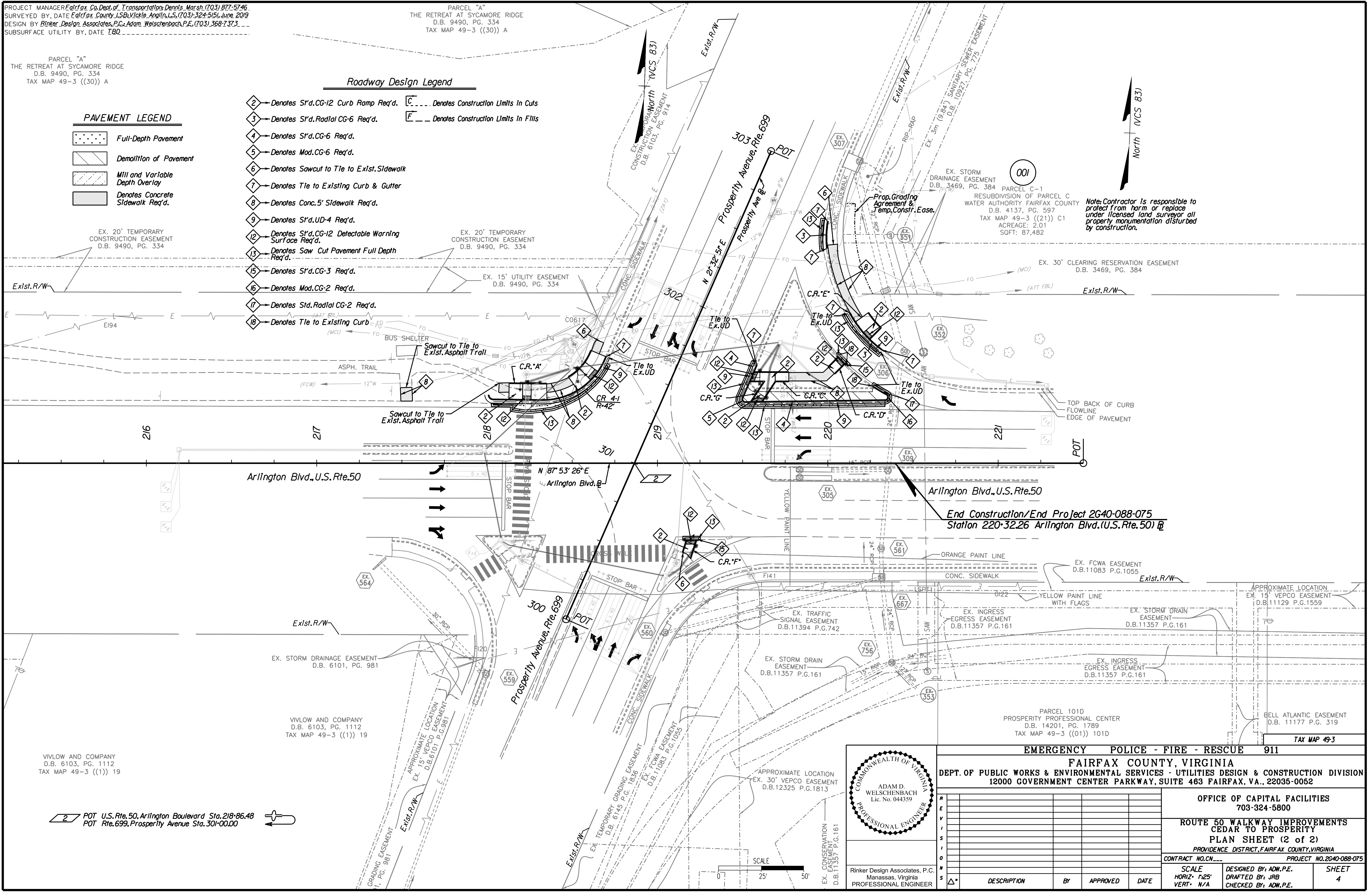
### Roadway Design Legend

### PAVEMENT LEGEND

- Full-Depth Pavement
- Demolition of Pavement
- Mill and Variable Depth Overlay
- Denotes Concrete Sidewalk Req'd.

- Denotes St'd. CG-12 Curb Ramp Req'd.
- Denotes St'd. Radial CG-6 Req'd.
- Denotes St'd. CG-6 Req'd.
- Denotes Mod. CG-6 Req'd.
- Denotes Sawcut to Tie to Exst. Sidewalk
- Denotes Tie to Existing Curb & Gutter
- Denotes Conc. 5' Sidewalk Req'd.
- Denotes St'd. UD-4 Req'd.
- Denotes St'd. CG-12 Detectable Warning Surface Req'd.
- Denotes Saw Cut Pavement Full Depth Req'd.
- Denotes St'd. CG-3 Req'd.
- Denotes Mod. CG-2 Req'd.
- Denotes Std. Radial CG-2 Req'd.
- Denotes Tie to Existing Curb

- Denotes Construction Limits In Cuts
- Denotes Construction Limits In Fills



Note: Contractor is responsible to protect from harm or replace under licensed land surveyor all property monumentation disturbed by construction.

End Construction/End Project 2640-088-075  
Station 220+32.26 Arlington Blvd. (U.S. Rte. 50)

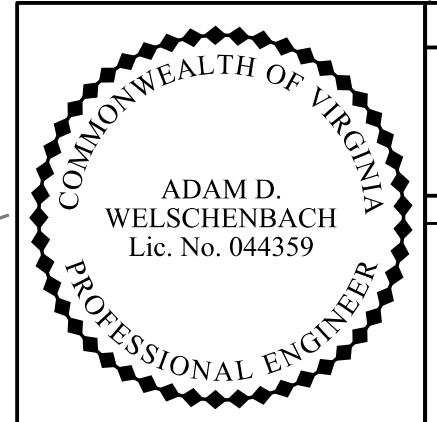
VIVLOW AND COMPANY  
D.B. 6103, PG. 1112  
TAX MAP 49-3 ((1)) 19

VIVLOW AND COMPANY  
D.B. 6103, PG. 1112  
TAX MAP 49-3 ((1)) 19

PARCEL 101D  
PROSPERITY PROFESSIONAL CENTER  
D.B. 14201, PG. 1789  
TAX MAP 49-3 ((01)) 101D

BELL ATLANTIC EASEMENT  
D.B. 11177 P.G. 319

POT U.S. Rte. 50, Arlington Boulevard Sta. 218+86.48  
 POT Rte. 699, Prosperity Avenue Sta. 301+00.00



Rinker Design Associates, P.C.  
Manassas, Virginia  
PROFESSIONAL ENGINEER

EMERGENCY POLICE - FIRE - RESCUE 911  
FAIRFAX COUNTY, VIRGINIA  
DEPT. OF PUBLIC WORKS & ENVIRONMENTAL SERVICES - UTILITIES DESIGN & CONSTRUCTION DIVISION  
12000 GOVERNMENT CENTER PARKWAY, SUITE 463 FAIRFAX, VA., 22035-0052

OFFICE OF CAPITAL FACILITIES  
703-324-5800

ROUTE 50 WALKWAY IMPROVEMENTS  
CEDAR TO PROSPERITY  
PLAN SHEET (2 of 2)  
PROVIDENCE DISTRICT, FAIRFAX COUNTY, VIRGINIA

CONTRACT NO. CN-... PROJECT NO. 2640-088-075

SCALE	DESIGNED BY:	SHEET
HORIZ. 1"=25'	ADM, P.E.	4
VERT. N/A	DRIFTED BY: JRB	
	CHECKED BY: ADM, P.E.	

DESCRIPTION	BY	APPROVED	DATE