



County of Fairfax, Virginia

Seven Corners Phasing Study

Typical Travel Conditions Analysis

Public Outreach Summary
Comments Received Through:
December 21, 2021



Public Outreach Overview

- **What topics were discussed at public meetings and pop-up events?**
 - Previous study findings
 - Typical travel conditions
 - Pedestrian & Bicycle Facility Prioritization
 - 2030 Phasing Scenarios
- **How was public outreach conducted?**
 - English language meeting on November 17, 2021
 - English, Vietnamese and Spanish pop-up events on November 13, 2021
 - English language meeting on February 3, 2021
 - Spanish language meeting on February 4, 2021
- **How was public feedback collected?**
 - Comments in-person, via the project website, via email and via social media
 - Multilingual community surveys on how residents experience the transportation network and prefer funding prioritized for intersection and bicycle improvements



Public Outreach: By the Numbers

- Fairfax County DOT reached out for feedback to approximately:
 - **6,000+** subscribers to [Fairfax Alerts](#)' email, text and/or voice notifications
 - **300 home and business owners**
 - Including over 20 property managers and Homeowners Associations
 - **40 religious** organizations
 - **12 nonprofit and social service** organizations
 - **12 recreational** centers, **schools** and **libraries**
 - **3 local government** stakeholders
 - [Neighborhood and Community Services](#), [Fairfax County Public Schools](#), and the [Office of Human Rights and Equity Programs](#).
 - **2 social media outlets**
 - [Next Door](#) and [FCDOT Facebook](#)



Online Engagement: By the Numbers

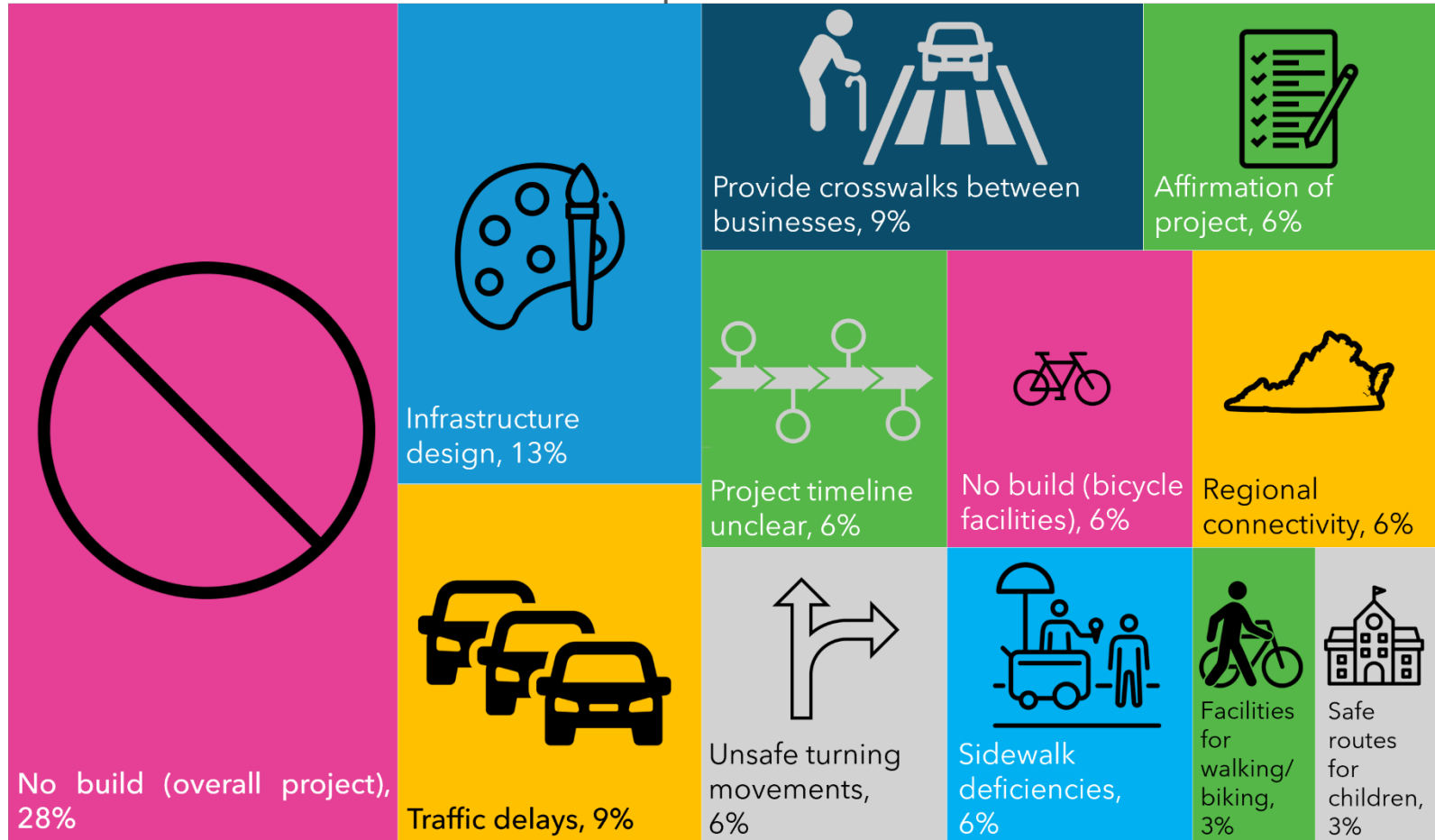
- Comments and survey responses were taken through December 21, 2021
- Public comments and questions came from:
 - **63 interactions** in-person
 - **44 survey respondents** for the second public survey
 - **24 attendees** in Public Meeting 2
 - **22 online commenters** after Public Meeting 2
- Comments and survey results are summarized in the following slides



Summary of Comments and Survey Results



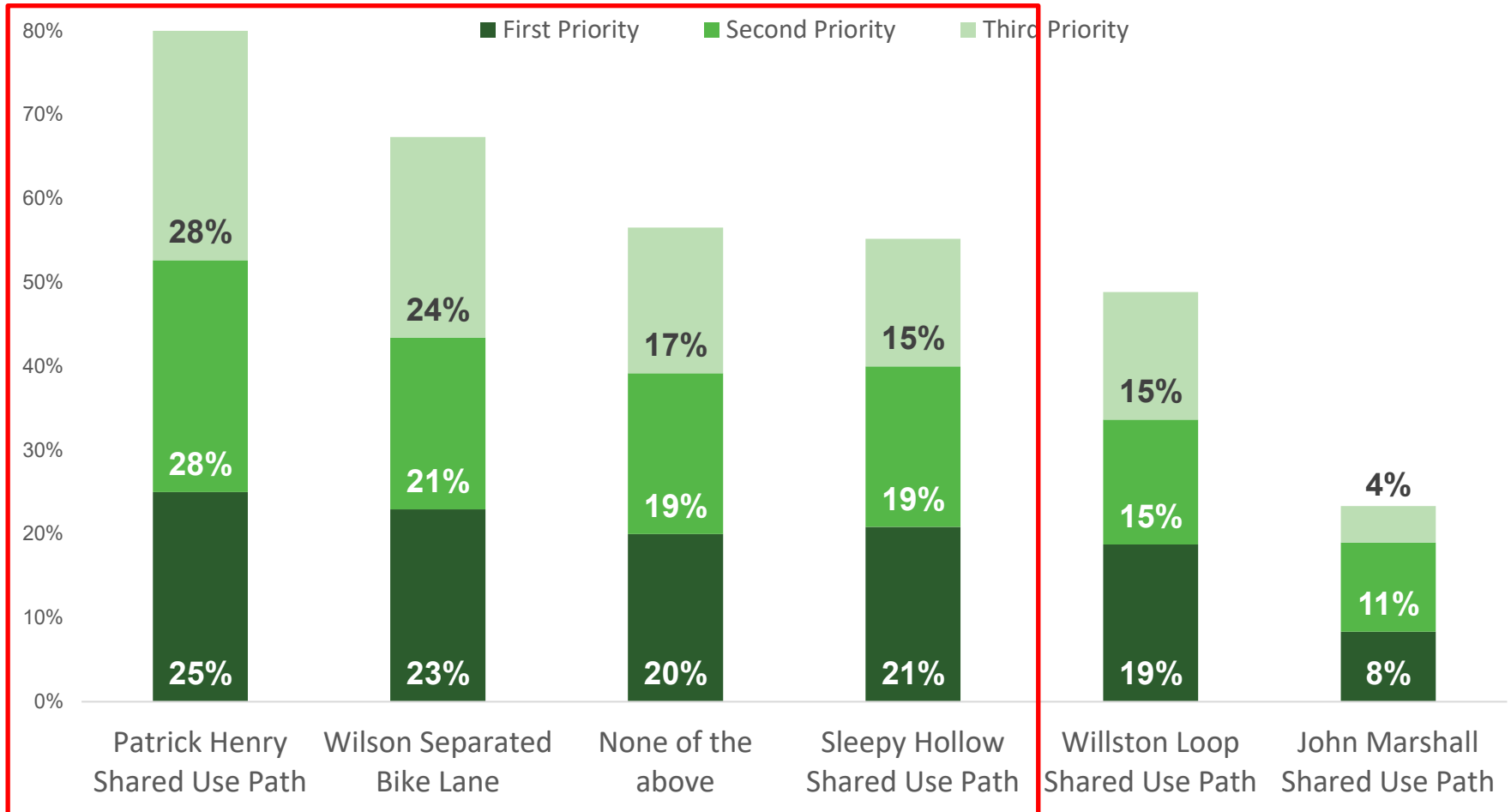
Initial feedback on the roadway alignments or the pedestrian and bicycle facilities in the Initial Improvement Scenarios:



* Written comments from respondents to the first survey question (32 total) were assigned comment codes to identify major categories of concern.



Top Bicycle/Pedestrian Facilities for Construction



* The stated preferences above are from 48 in-person comments and survey responses.

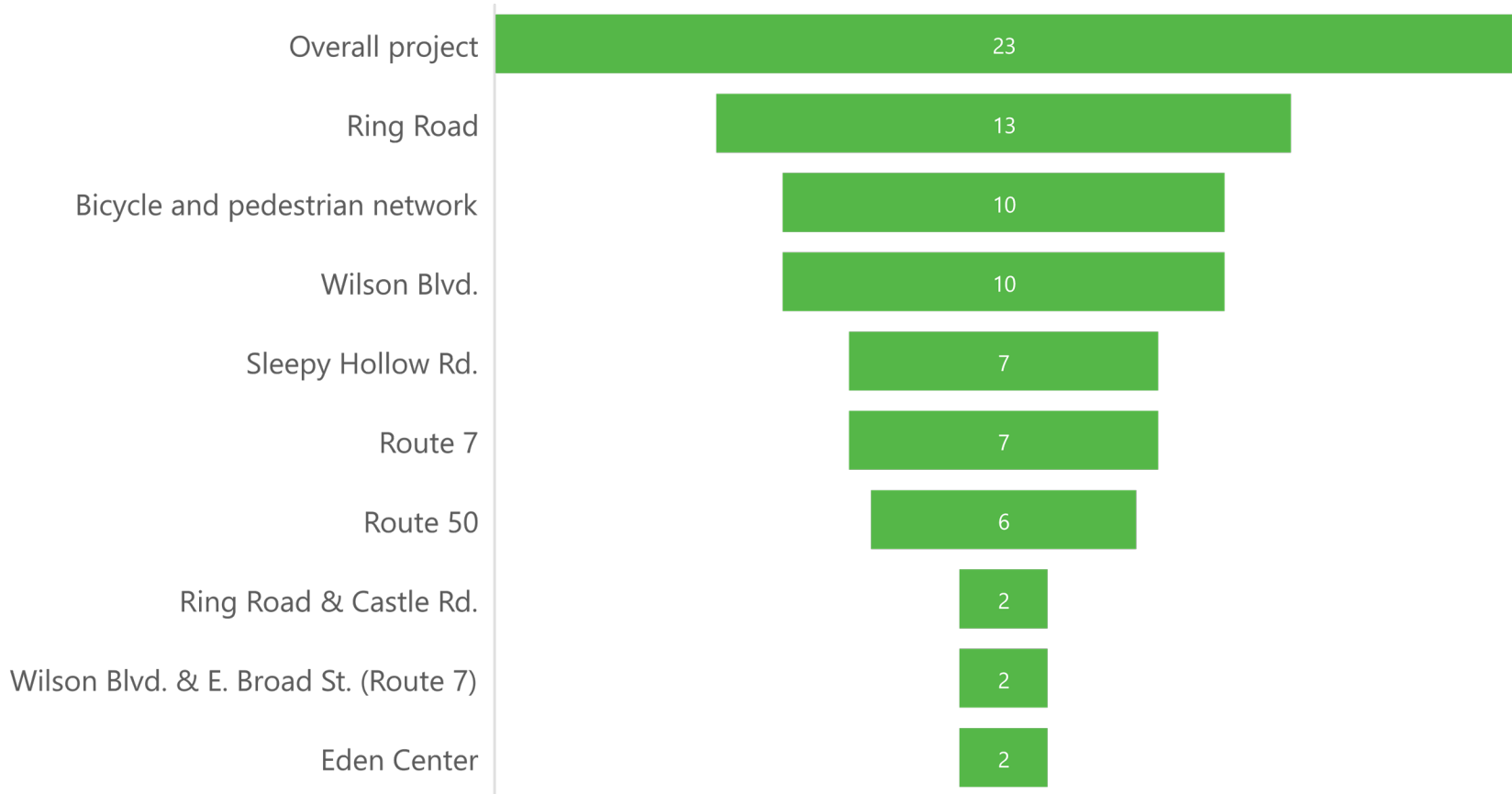


Quotes from those answering “None of the above”

Issue	Quote
Conceptual definitions, diagrams and/or graphic renderings needed	<ul style="list-style-type: none">• “I need to understand what these "facilities" are before commenting.• “My initial thoughts are it is impossible to tell from this drawing and the experts should be figuring this out.”• “I am having trouble with the scale, and I need to see this in context of a 1/2 mile, 1 mile and 2 mile radius to get a better sense of how this fits in the community. What is the width of ring road? 4 lanes of traffic? are the green lanes comparable to a lane of traffic?”
No vision for walking or biking in area	<ul style="list-style-type: none">• “There's no way for pedestrians to walk along Route 7. It's extremely dangerous walking there.”• “I don't walk or bike in this area.”



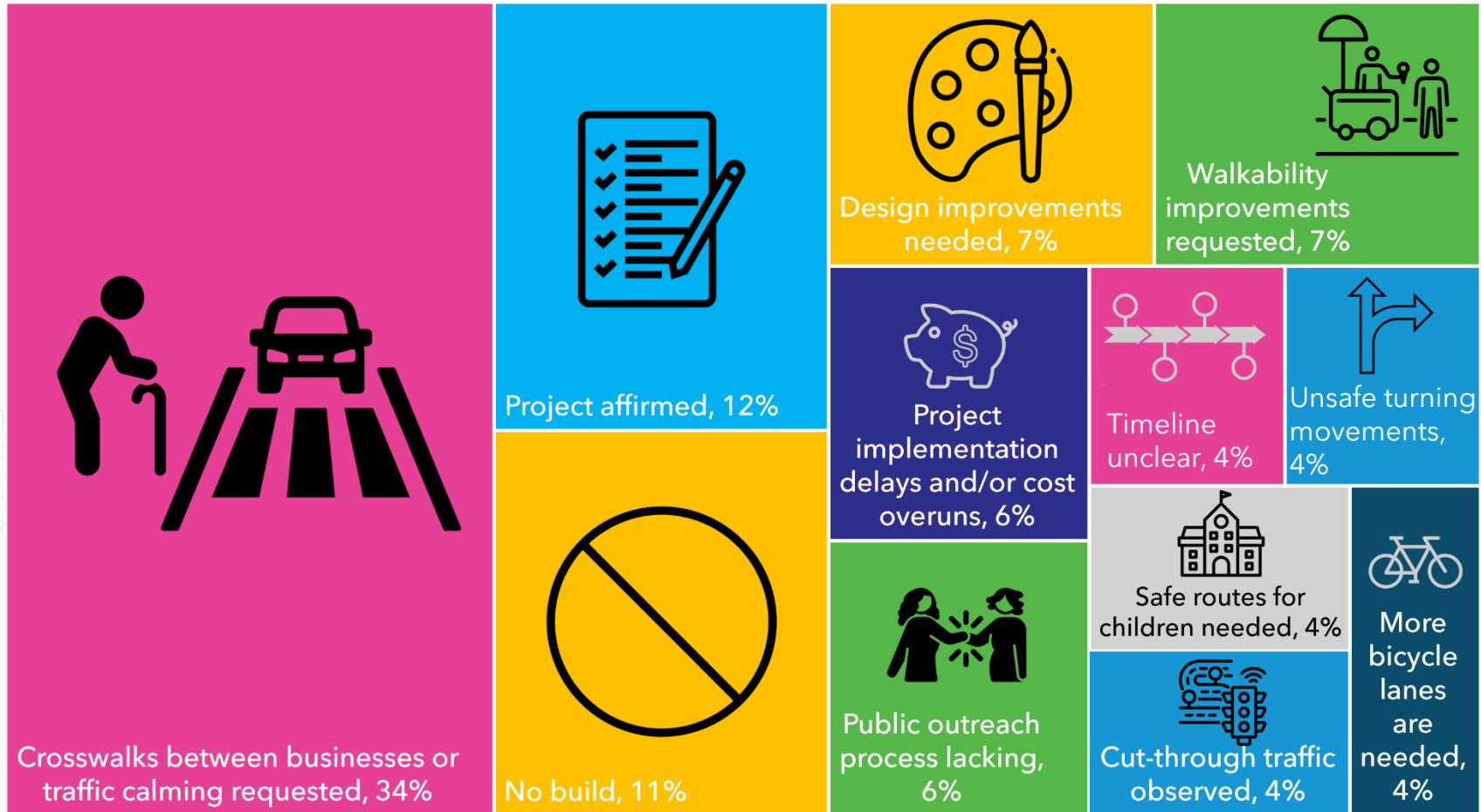
Major Areas of Concern from Written Comments



* Written comments from survey questions and other online sources (112 total) were assigned comment codes to identify major areas of concern.



Categories of Concern from Additional Written Comments



* Written comments from survey questions and other online sources beyond question 1 (82 total) were assigned comment codes to identify major categories of concern.



Quotes from Written Comments

Topic	Quote
Safety (50% of all comments)	<ul style="list-style-type: none">• “Pedestrian/bike access through Castle Road will be needed in order to access Bailey’s Upper Elementary from the neighborhood. Better would be to have pedestrian/ bike access through cul-de-sac on Shadeland.”• “Wilson boulevard near the Hispanic stores need better crosswalks. People are almost getting hit by cars.”
Affirmation of Project Findings (12% of all comments)	<ul style="list-style-type: none">• “As a resident of the area, I like Scenario 2 better because it improves connectivity throughout the area.”• “Thanks for addressing Seven Corners, it is truly the worst intersection in the world. Please get going on these projects at the earliest convenience.”



Quotes from Written Comments

Topic	Quote
Public Outreach Process or Implementation Delays (8% of all comments)	<ul style="list-style-type: none">• “Can you tell the community what feedback has been received and how you have accepted or rejected specific suggestions, and why. We are beginning to believe that FCDOT has already decided on its planned actions, and we aren’t sure if FCDOT is sincere in its discussions with the community.”• “For the last 30-40 years, you have been talking about the changes coming.”
Cut-through Traffic (4% of all comments)	<ul style="list-style-type: none">• “As a resident of Castle Road who will be directly affected, I agree [with closing off Castle Road from the proposed Ring Road]...both for traffic safety and to eliminate increased cut-through traffic.”