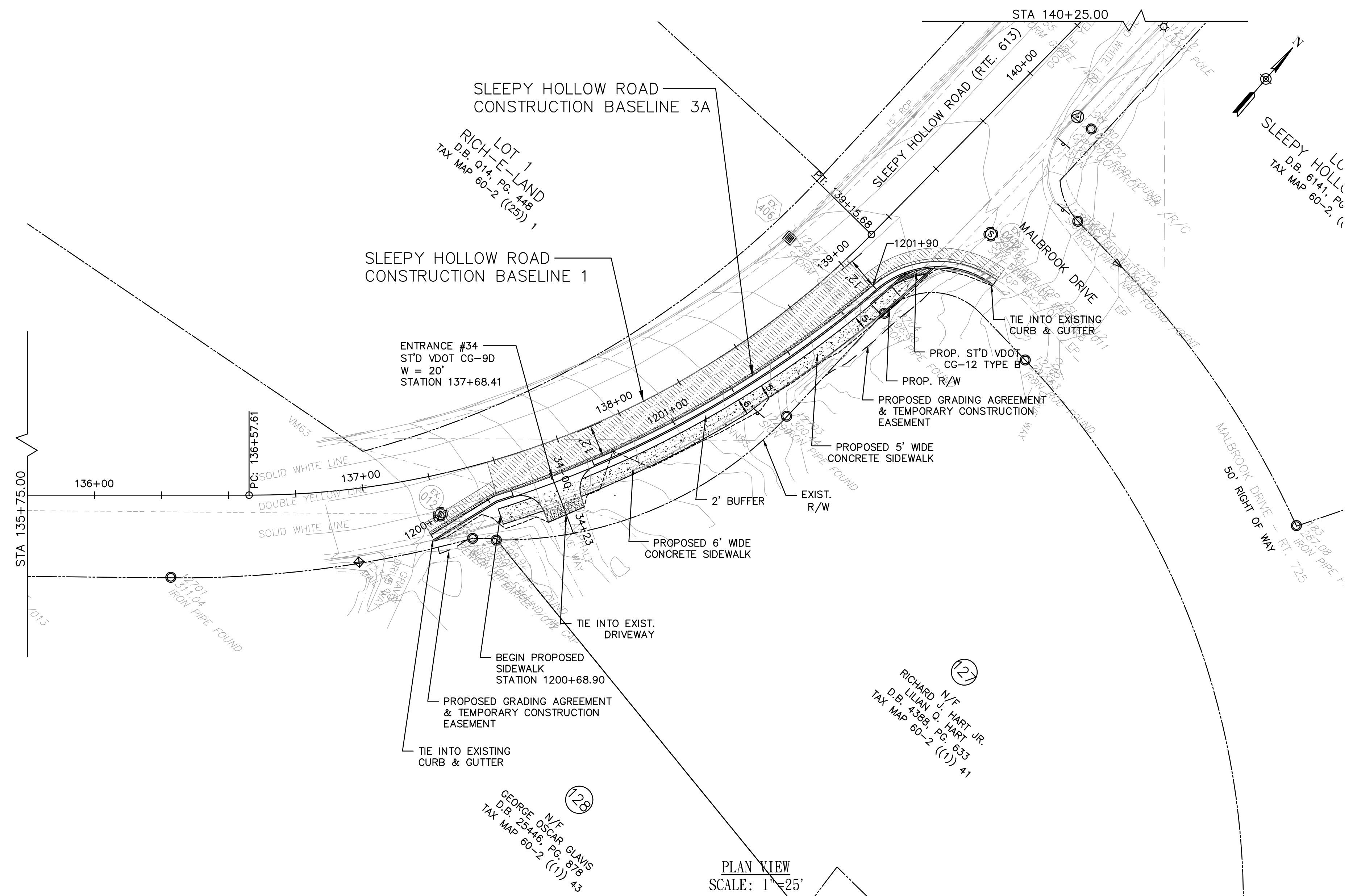


PROJECT MANAGER - MARK VANZANDI, (703) 877-5600 - TDD of Fairfax County  
 SURVEYED BY, DATE - FAIRFAX COUNTY DOT SURVEY DEPARTMENT, AUGUST 4, 2016 (703) 877-5600  
 DESIGN BY EMMANUEL ABRANYOS, P.E., (571) 218-1000 - JACOBS  
 SUBSURFACE UTILITY BY, DATE - N/A



PLAN VIEW  
 SCALE: 1"=25'

**LEGEND**

- CLASS A4 CONCRETE
- ASPHALT DRIVEWAY
- DETECTABLE WARNING SURFACE
- MILL AND OVERLAY
- FULL DEPTH PAVEMENT
- PROP. R/W
- PROP. TEMP. CONST. EASEMENT

DENOTES CONSTRUCTION LIMITS IN CUTS  
 DENOTES CONSTRUCTION LIMITS IN FILLS

**NOTES:**

- 1.) VDOT SHALL MAINTAIN PROPOSED CONCRETE SIDEWALK, CURB RAMPS, AND ENTRANCE GUTTERS.
- 2.) PROPOSED CONCRETE SIDEWALK AND CURB RAMPS SHALL DRAIN TOWARDS ROADWAY AT 2% MAX CROSS SLOPE.
- 3.) CONTRACTOR SHALL FULL DEPTH SAW CUT 1' INTO EXISTING ASPHALT PAVEMENT FOR THE INSTALLATION OF CURB & GUTTER AND/OR CURB RAMPS AND REPLACE ANY DISTURBED ASPHALT PAVEMENT WITH THE PAVEMENT SECTION PROVIDED ON TYPICAL SECTION SHEET 2C OR PROVIDE THE SAME PAVEMENT SECTION THICKNESS AS THE EXISTING PAVEMENT DEPTH.
- 4.) SEE SHEET 2D(1) TO 2D(5) FOR CURB RAMP DETAILS.
- 5.) REMOVE AND RELOCATE ALL IMPACTED HOUSE MARKER SIGNS AND MAIL BOXES AT THE ENTRANCES.
- 6.) SEE EROSION AND SEDIMENT CONTROL SHEETS FOR TREE REMOVAL.

THESE PLANS ARE UNFINISHED AND UNAPPROVED AND ARE NOT TO BE USED FOR ANY TYPE OF CONSTRUCTION OR THE ACQUISITION OF RIGHT OF WAY.

<b>EMERGENCY POLICE - FIRE - RESCUE 911</b>			
<b>FAIRFAX COUNTY, VIRGINIA</b>			
DEPARTMENT OF PUBLIC WORKS AND ENVIRONMENTAL SERVICES			
UTILITIES DESIGN & CONSTRUCTION DIVISION			
12000 GOVERNMENT CENTER PARKWAY, SUITE 463 FAIRFAX, VA., 22035-0052			
OFFICE OF CAPITAL FACILITIES		703-324-5800	
<b>SLEEPY HOLLOW ROAD WALKWAYS</b>			
PLAN SHEET			
CONTRACT NO. PROJECT NO. 2G40-088-028			
SCALE	DESIGNED: E. ABRANYOS	SHEET	
AS SHOWN	DRAFTED: A. PASCARELLI	6C	
		CHECKED: A. FARYAR	
FUND # 400-C40011			

**JACOBS**  
 Buildings and Infrastructure  
 1100 North Glebe Road, Suite 500  
 Arlington, Virginia 22201