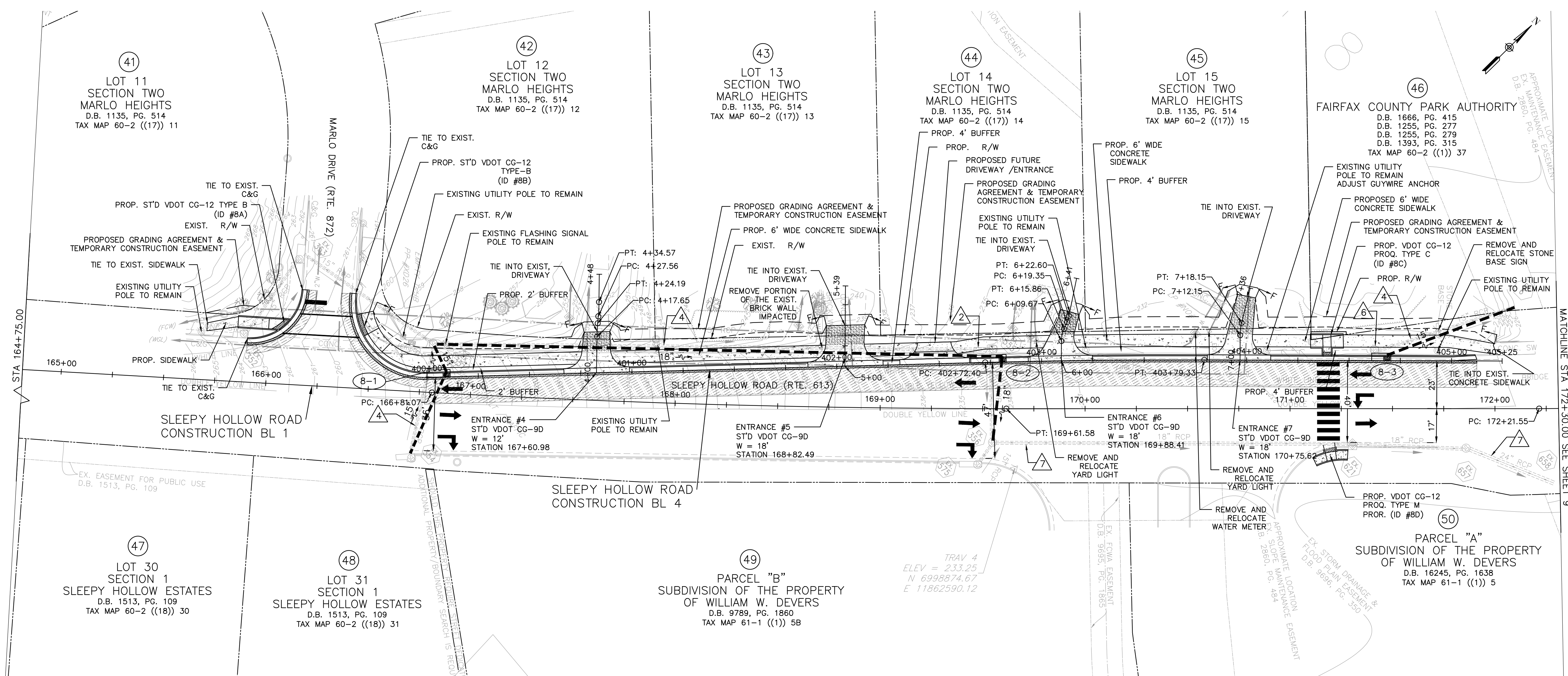


PROJECT MANAGER: MARK VANZANDT, (703) 877-5600; TDD: TDD of Fairfax County
 SURVEYED BY: DATE: FAIRFAX COUNTY DOT SURVEY DEPARTMENT, AUGUST 4, 2016 (703) 877-5600
 DESIGN BY: EMMANUEL ABRANYOS, P.E., (571) 218-1000; JACOBS
 SUBSURFACE UTILITY BY: DATE: N/A



PLAN VIEW
 SCALE: 1"=25'

LEGEND

- CLASS A4 CONCRETE
- ASPHALT DRIVEWAY
- DETECTABLE WARNING SURFACE
- MILL AND OVERLAY
- FULL DEPTH PAVEMENT
- PROP. R/W
- PROP. TEMP. CONST. EASEMENT

DENOTES CONSTRUCTION LIMITS IN CUTS
 DENOTES CONSTRUCTION LIMITS IN FILLS

DRAINAGE LEGEND

- DRAINAGE TOP TO BE ADJUSTED
- DRAINAGE STRUCTURE TO BE REMOVED
- DRAINAGE STRUCTURE TO BE ABANDONED
- DRAINAGE PIPE TO BE REMOVED
- DRAINAGE PIPE TO BE ABANDONED
- DRAINAGE STRUCTURE TO BE MODIFIED
- DRAINAGE STRUCTURE TO BE MODIFIED

NOTES:

- 1.) VDOT SHALL MAINTAIN PROPOSED CONCRETE SIDEWALK, CURB RAMPS, AND ENTRANCE GUTTERS.
- 2.) PROPOSED CONCRETE SIDEWALK AND CURB RAMPS SHALL DRAIN TOWARDS ROADWAY AT 2% MAX CROSS SLOPE.
- 3.) CONTRACTOR SHALL FULL DEPTH SAW CUT 1' INTO EXISTING ASPHALT PAVEMENT FOR THE INSTALLATION OF CURB & GUTTER AND/OR CURB RAMPS AND REPLACE ANY DISTURBED ASPHALT PAVEMENT WITH THE PAVEMENT SECTION PROVIDED ON TYPICAL SECTION SHEET 2C OR PROVIDE THE SAME PAVEMENT SECTION THICKNESS AS THE EXISTING PAVEMENT DEPTH.
- 4.) SEE SHEET 2D(1) TO 2D(5) FOR CURB RAMP DETAILS.
- 5.) REMOVE AND RELOCATE ALL IMPACTED HOUSE MARKER SIGNS AND MAIL BOXES AT THE ENTRANCES.
- 6.) SEE EROSION AND SEDIMENT CONTROL SHEETS FOR TREE REMOVAL.

THESE PLANS ARE UNFINISHED AND UNAPPROVED AND ARE NOT TO BE USED FOR ANY TYPE OF CONSTRUCTION OR THE ACQUISITION OF RIGHT OF WAY.

EMERGENCY POLICE - FIRE - RESCUE 911
FAIRFAX COUNTY, VIRGINIA
 DEPARTMENT OF PUBLIC WORKS AND ENVIRONMENTAL SERVICES
 UTILITIES DESIGN & CONSTRUCTION DIVISION
 12000 GOVERNMENT CENTER PARKWAY, SUITE 463 FAIRFAX, VA., 22035-0052

	OFFICE OF CAPITAL FACILITIES 703-324-5800	
SLEEPY HOLLOW ROAD WALKWAYS PLAN SHEET		
CONTRACT NO. PROJECT NO. 2G40-088-028		
SCALE AS SHOWN	DESIGNED: E. ABRANYOS DRAFTED: A. PASCARELLI CHECKED: A. FARYAR	SHEET 8
FUND # 400-C40011		

