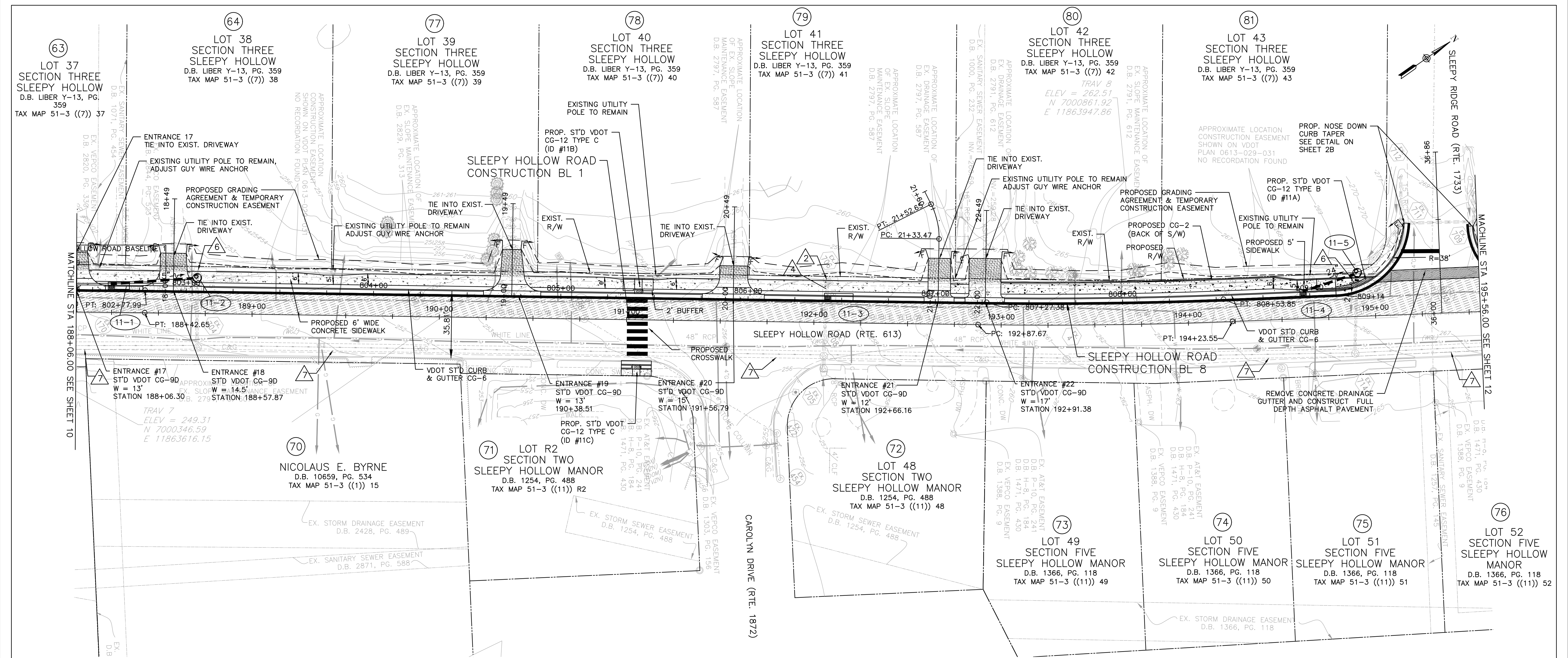


PROJECT MANAGER: MARK VANZANDI, (703) 877-5600, TDD of Fairfax County  
 SURVEYED BY: DATE: FAIRFAX COUNTY DOT SURVEY DEPARTMENT, AUGUST 4, 2016 (703) 877-5600  
 DESIGN BY: EMMANUEL ABRANYOS, P.E., (571) 218-1000 - JACOBS  
 SUBSURFACE UTILITY BY: DATE: N/A



PLAN VIEW  
 SCALE: 1"=25'

- LEGEND**
- CLASS A4 CONCRETE [Pattern]
  - ASPHALT DRIVEWAY [Pattern]
  - DETECTABLE WARNING SURFACE [Pattern]
  - MILL AND OVERLAY [Pattern]
  - FULL DEPTH PAVEMENT [Pattern]
  - PROP. R/W [Symbol]
  - PROP. TEMP. CONST. EASEMENT [Symbol]

**C** DENOTES CONSTRUCTION LIMITS IN CUTS  
**F** DENOTES CONSTRUCTION LIMITS IN FILLS

- DRAINAGE LEGEND**
- 1 DRAINAGE TOP TO BE ADJUSTED
  - 2 DRAINAGE STRUCTURE TO BE REMOVED
  - 3 DRAINAGE STRUCTURE TO BE ABANDONED
  - 4 DRAINAGE PIPE TO BE REMOVED
  - 5 DRAINAGE PIPE TO BE ABANDONED
  - 6 DRAINAGE STRUCTURE TO BE MODIFIED
  - 7 DRAINAGE PIPE TO BE INSPECTED

- NOTES:**
- 1.) VDOT SHALL MAINTAIN PROPOSED CONCRETE SIDEWALK, CURB RAMPS, AND ENTRANCE GUTTERS.
  - 2.) PROPOSED CONCRETE SIDEWALK AND CURB RAMPS SHALL DRAIN TOWARDS ROADWAY AT 2% MAX CROSS SLOPE.
  - 3.) CONTRACTOR SHALL FULL DEPTH SAW CUT 1' INTO EXISTING ASPHALT PAVEMENT FOR THE INSTALLATION OF CURB & GUTTER AND/OR CURB RAMPS AND REPLACE ANY DISTURBED ASPHALT PAVEMENT WITH THE PAVEMENT SECTION PROVIDED ON TYPICAL SECTION SHEET 2C OR PROVIDE THE SAME PAVEMENT SECTION THICKNESS AS THE EXISTING PAVEMENT DEPTH.
  - 4.) SEE SHEET 2D(1) TO 2D(5) FOR CURB RAMP DETAILS.
  - 5.) REMOVE AND RELOCATE ALL IMPACTED HOUSE MARKER SIGNS AND MAIL BOXES AT THE ENTRANCES.
  - 6.) SEE EROSION AND SEDIMENT CONTROL SHEETS FOR TREE REMOVAL.

THESE PLANS ARE UNFINISHED AND UNAPPROVED AND ARE NOT TO BE USED FOR ANY TYPE OF CONSTRUCTION OR THE ACQUISITION OF RIGHT OF WAY.

**EMERGENCY POLICE - FIRE - RESCUE 911**  
**FAIRFAX COUNTY, VIRGINIA**  
 DEPARTMENT OF PUBLIC WORKS AND ENVIRONMENTAL SERVICES  
 UTILITIES DESIGN & CONSTRUCTION DIVISION  
 12000 GOVERNMENT CENTER PARKWAY, SUITE 463 FAIRFAX, VA., 22035-0052

OFFICE OF CAPITAL FACILITIES 703-324-5800	<b>SLEEPY HOLLOW ROAD WALKWAYS</b> PLAN SHEET
CONTRACT NO. PROJECT NO. 2G40-088-028	SCALE DESIGNED: E. ABRANYOS SHEET AS SHOWN DRAFTED: A. PASCARELLI 11 CHECKED: A. FARYAR
FUND # 400-C40011	

