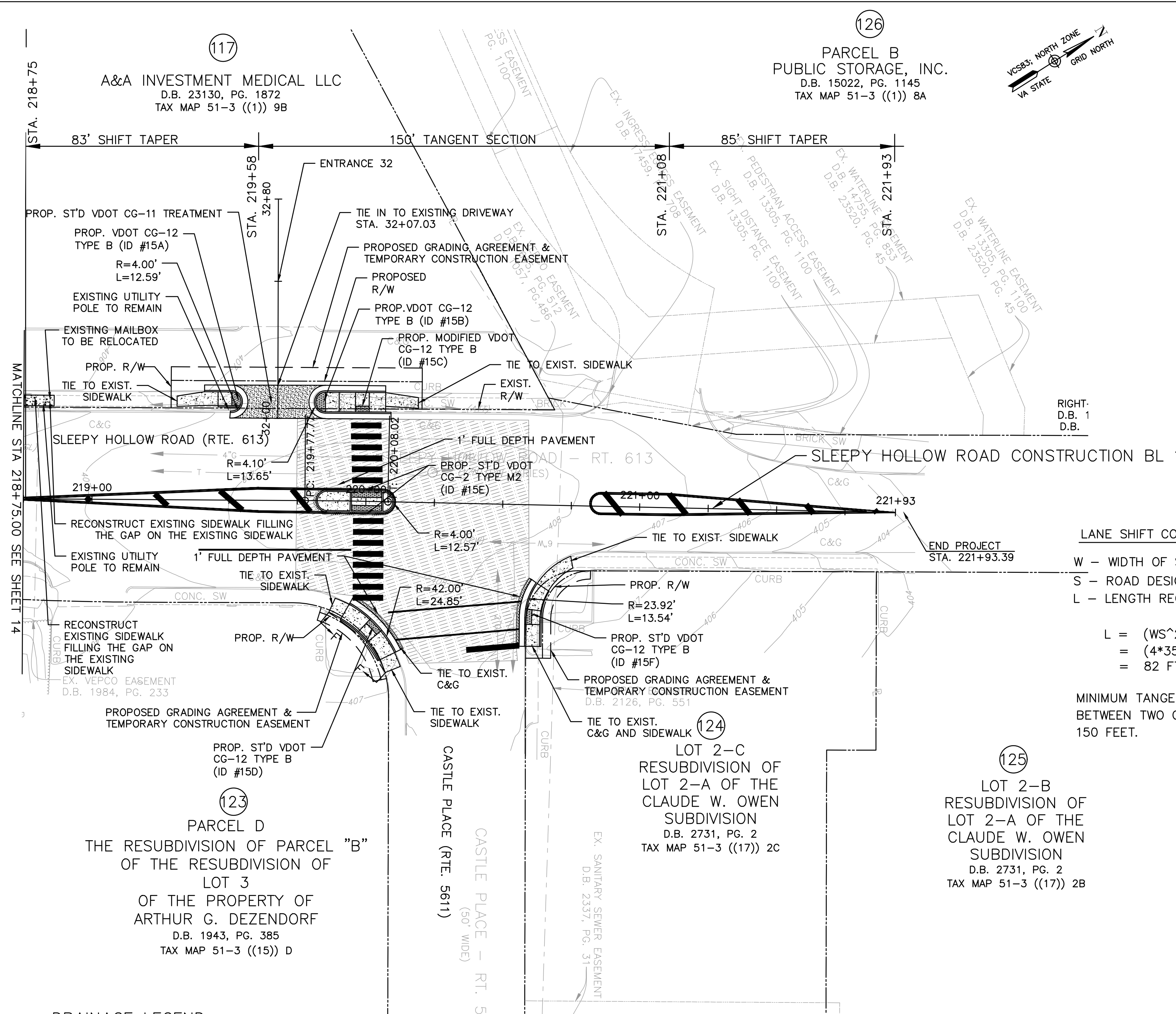


PROJECT MANAGER - MARK VANZANDI, (703) 877-5600 - TDD of Fairfax County
 SURVEYED BY, DATE FAIRFAX COUNTY DOT SURVEY DEPARTMENT, AUGUST 4, 2016 (703) 877-5600
 DESIGN BY EMMANUEL ABRANYOS, P.E., (571) 218-1000 - JACOBS
 SUBSURFACE UTILITY BY, DATE ACCUMARK, 1-800-542-2990, 08/21/17



LANE SHIFT COMPUTATION

W - WIDTH OF SHIFT (4')
 S - ROAD DESIGN SPEED (35 MPH)
 L - LENGTH REQUIRED FOR SHIFT

$$L = \frac{(WS^2)}{60}$$

$$= \frac{(4 \times 35^2)}{60}$$

$$= 82 \text{ FT.}$$

MINIMUM TANGENT SECTION LENGTH BETWEEN TWO CONSECUTIVE SHIFT TAPER 150 FEET.

- DRAINAGE LEGEND**
- 1. DRAINAGE TOP TO BE ADJUSTED
 - 2. DRAINAGE STRUCTURE TO BE REMOVED
 - 3. DRAINAGE STRUCTURE TO BE ABANDONED
 - 4. DRAINAGE PIPE TO BE REMOVED
 - 5. DRAINAGE PIPE TO BE ABANDONED
 - 6. DRAINAGE STRUCTURE TO BE MODIFIED
 - 7. DRAINAGE PIPE TO BE INSPECTED
 - 8. DRAINAGE STRUCTURE TO BE CAPPED UNDER PAVEMENT

PLAN VIEW
 SCALE: 1"=25'

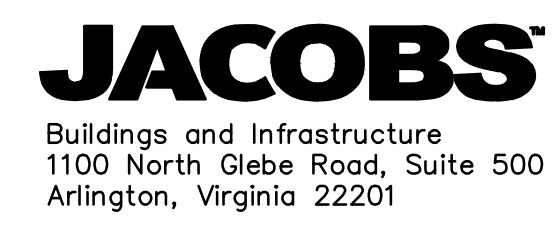
- NOTES:**
- 1.) VDOT SHALL MAINTAIN PROPOSED CONCRETE SIDEWALK, CURB RAMPS, AND ENTRANCE GUTTERS.
 - 2.) PROPOSED CONCRETE SIDEWALK AND CURB RAMPS SHALL DRAIN TOWARDS ROADWAY AT 2% MAX CROSS SLOPE.
 - 3.) CONTRACTOR SHALL FULL DEPTH SAW CUT 1' INTO EXISTING ASPHALT PAVEMENT FOR THE INSTALLATION OF CURB & GUTTER AND/OR CURB RAMPS AND REPLACE ANY DISTURBED ASPHALT PAVEMENT WITH THE PAVEMENT SECTION PROVIDED ON TYPICAL SECTION SHEET 2C OR PROVIDE THE SAME PAVEMENT SECTION THICKNESS AS THE EXISTING PAVEMENT DEPTH.
 - 4.) SEE SHEET 2D(1) TO 2D(5) FOR CURB RAMP DETAILS.
 - 5.) SEE EROSION AND SEDIMENT CONTROL SHEETS FOR TREE REMOVAL.
 - 6.) SEE SHEET 2D(4) FOR CURB RETURNS STATION AND ELEVATION.
 - 7.) MANHOLES FRAMES AND COVER SHALL BE FLUSH WITH GRADE AND PROTECTED DURING CONSTRUCTION

LEGEND

- CLASS A4 CONCRETE
- ASPHALT DRIVEWAY
- DETECTABLE WARNING SURFACE
- MILL AND OVERLAY
- FULL DEPTH PAVEMENT
- PROP. R/W
- PROP. TEMP. CONST. EASEMENT

C DENOTES CONSTRUCTION LIMITS IN CUTS
F DENOTES CONSTRUCTION LIMITS IN FILLS

NOTES:
 HORIZONTAL DATUM: VIRGINIA COORDINATE SYSTEM NORTH ZONE #4501
 VERTICAL DATUM: GEODETIC VERTICAL DATUM (NGVD), 1929



EMMANUEL ABRANYOS
 2020.12.04
JACOBS
 Arlington, Virginia
 ROADWAY ENGINEER

EMERGENCY POLICE - FIRE - RESCUE 911
FAIRFAX COUNTY, VIRGINIA
 DEPARTMENT OF PUBLIC WORKS AND ENVIRONMENTAL SERVICES
 UTILITIES DESIGN & CONSTRUCTION DIVISION
 12000 GOVERNMENT CENTER PARKWAY, SUITE 463 FAIRFAX, VA., 22035-0052

OFFICE OF CAPITAL FACILITIES
 703-324-5800

SLEEPY HOLLOW ROAD WALKWAYS
 PLAN SHEET

CONTRACT NO. PROJECT NO. 2G40-088-028

SCALE AS SHOWN	DESIGNED: E. ABRANYOS	DRAFTED: A. PASCARELLI	CHECKED: A. FARYAR	SHEET 15
----------------	-----------------------	------------------------	--------------------	----------

FUND # 400-C40011