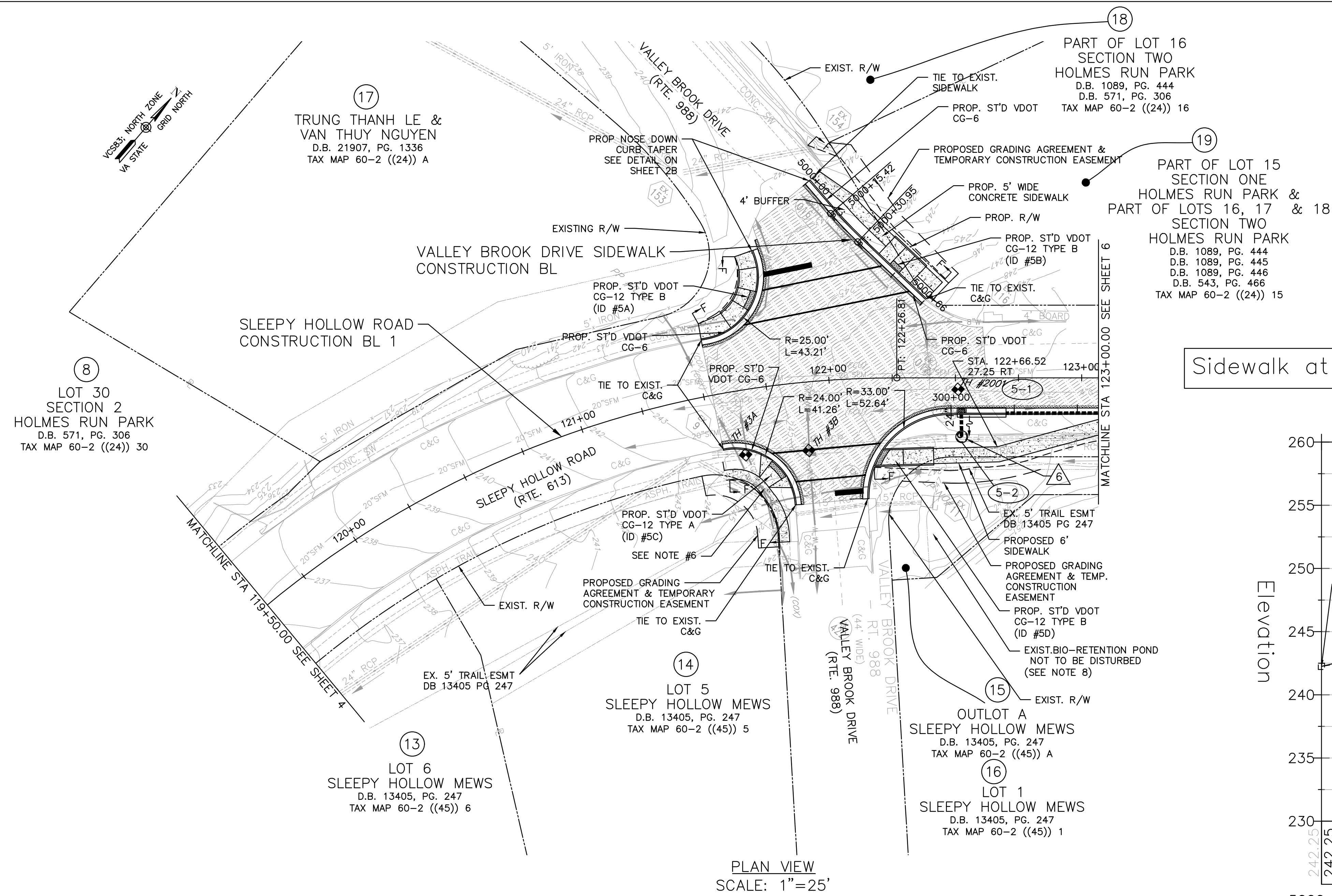
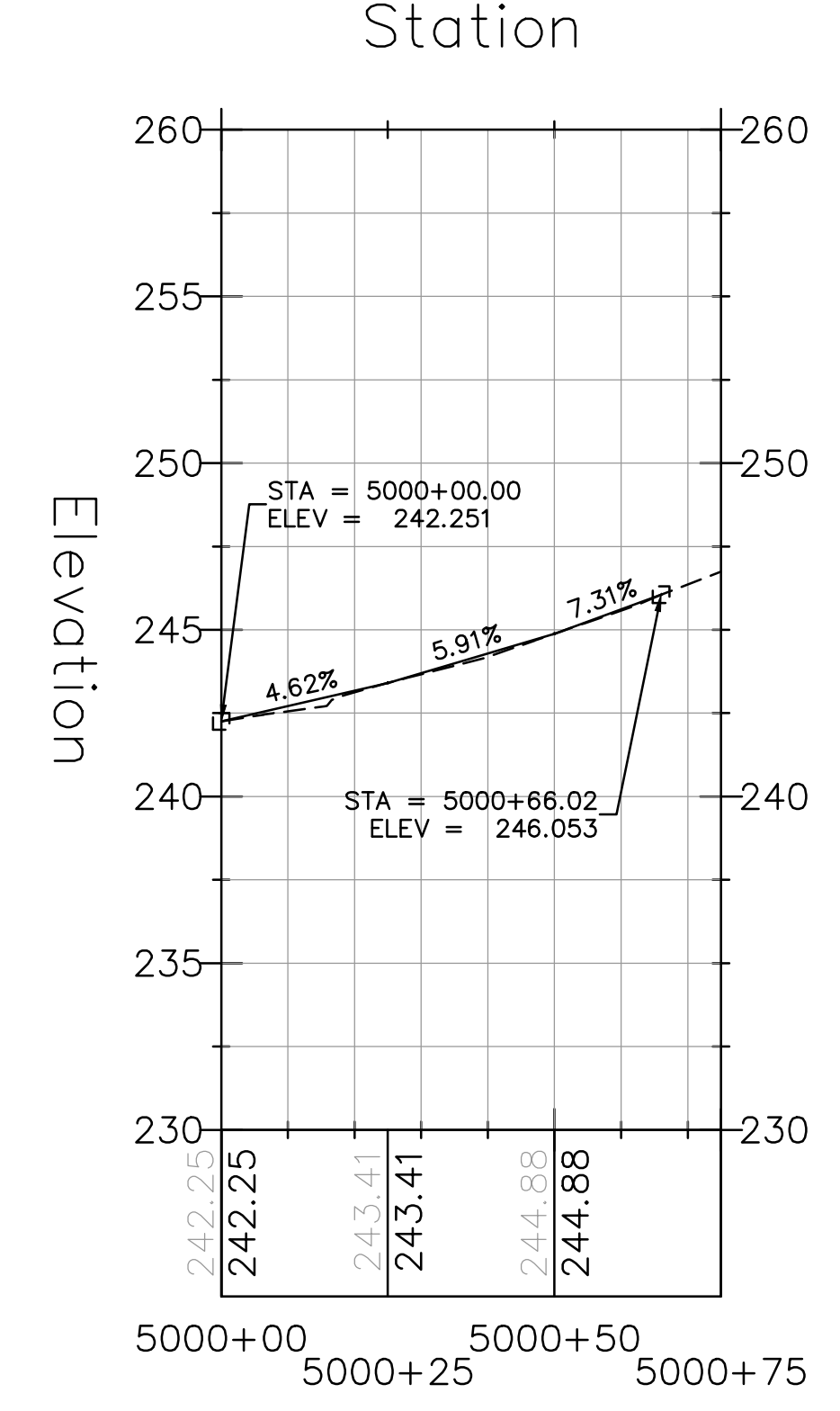


PROJECT MANAGER - MARK VANZANDI, (703) 877-5600 - TDD of Fairfax County
 SURVEYED BY, DATE FAIRFAX COUNTY DOT SURVEY DEPARTMENT, AUGUST 4, 2016 (703) 877-5600
 DESIGN BY EMMANUEL ABRANYOS, P.E., (571) 218-1000 - JACOBS
 SUBSURFACE UTILITY BY, DATE ACCUMARK, 1-800-542-2990, 08/21/17



PLAN VIEW
SCALE: 1"=25'

Sidewalk at Valley Brook Dr PROFILE



PROFILE VIEW
SCALE: 1"=10(H) 1"=2(V)

LEGEND

- CLASS A4 CONCRETE
- ASPHALT DRIVEWAY
- DETECTABLE WARNING SURFACE
- MILL AND OVERLAY
- FULL DEPTH PAVEMENT
- PROP. R/W
- PROP. TEMP. CONST. EASEMENT

DRAINAGE LEGEND

- 1 DRAINAGE TOP TO BE ADJUSTED
- 2 DRAINAGE STRUCTURE TO BE REMOVED
- 3 DRAINAGE STRUCTURE TO BE ABANDONED
- 4 DRAINAGE PIPE TO BE REMOVED
- 5 DRAINAGE PIPE TO BE ABANDONED
- 6 DRAINAGE STRUCTURE TO BE MODIFIED
- 7 DRAINAGE PIPE TO BE INSPECTED
- 8 DRAINAGE STRUCTURE TO BE CAPPED UNDER PAVEMENT

NOTES:

- 1.) VDOT SHALL MAINTAIN PROPOSED CONCRETE SIDEWALK, CURB RAMPS, AND ENTRANCE GUTTERS.
- 2.) PROPOSED CONCRETE SIDEWALK AND CURB RAMPS SHALL DRAIN TOWARDS ROADWAY AT 2% MAX CROSS SLOPE.
- 3.) CONTRACTOR SHALL FULL DEPTH SAW CUT 1' INTO EXISTING ASPHALT PAVEMENT FOR THE INSTALLATION OF CURB & GUTTER AND/OR CURB RAMPS AND REPLACE ANY DISTURBED ASPHALT PAVEMENT WITH THE PAVEMENT SECTION PROVIDED ON TYPICAL SECTION SHEET 2C OR PROVIDE THE SAME PAVEMENT SECTION THICKNESS AS THE EXISTING PAVEMENT DEPTH.
- 4.) SEE SHEET 2D(1) TO 2D(5) FOR CURB RAMP DETAILS.
- 5.) SEE EROSION AND SEDIMENT CONTROL SHEETS FOR TREE REMOVAL.
- 6.) PROPOSED TREE TRIMMING AT THE BACK OF THE SIDEWALK.
- 7.) SEE SHEET 2D(1) FOR CURB RETURNS STATION & OFFSET AND ELEVATION.
- 8.) CONTRACTOR TO STAY CLEAR FROM EXISTING BIORETENTION AREA WITHIN THE PROJECT LIMIT.
- 9.) MANHOLES FRAMES AND COVER SHALL BE FLUSH WITH GRADE AND PROTECTED DURING CONSTRUCTION.

NOTES:

HORIZONTAL DATUM: VIRGINIA COORDINATE SYSTEM NORTH ZONE #4501
 VERTICAL DATUM: GEODETIC VERTICAL DATUM (NGVD), 1929

JACOBS
 Buildings and Infrastructure
 1100 North Glebe Road, Suite 500
 Arlington, Virginia 22201

COMMONWEALTH OF VIRGINIA
 EMMANUEL ABRANYOS
 Lic. No. 0402053077
 ABRANYOS, EMMANUEL
 PROFESSIONAL ENGINEER

EMERGENCY POLICE - FIRE - RESCUE 911
 FAIRFAX COUNTY, VIRGINIA
 DEPARTMENT OF PUBLIC WORKS AND ENVIRONMENTAL SERVICES
 UTILITIES DESIGN & CONSTRUCTION DIVISION
 12000 GOVERNMENT CENTER PARKWAY, SUITE 463 FAIRFAX, VA., 22035-0052

OFFICE OF CAPITAL FACILITIES
 703-324-5800

SLEEPY HOLLOW ROAD WALKWAYS
 PLAN SHEET

CONTRACT NO. PROJECT NO. 2G40-088-028

SCALE AS SHOWN	DESIGNED: E. ABRANYOS	DRAFTED: A. PASCARELLI	CHECKED: A. FARYAR	SHEET 5
----------------	-----------------------	------------------------	--------------------	---------

FUND # 400-C40011