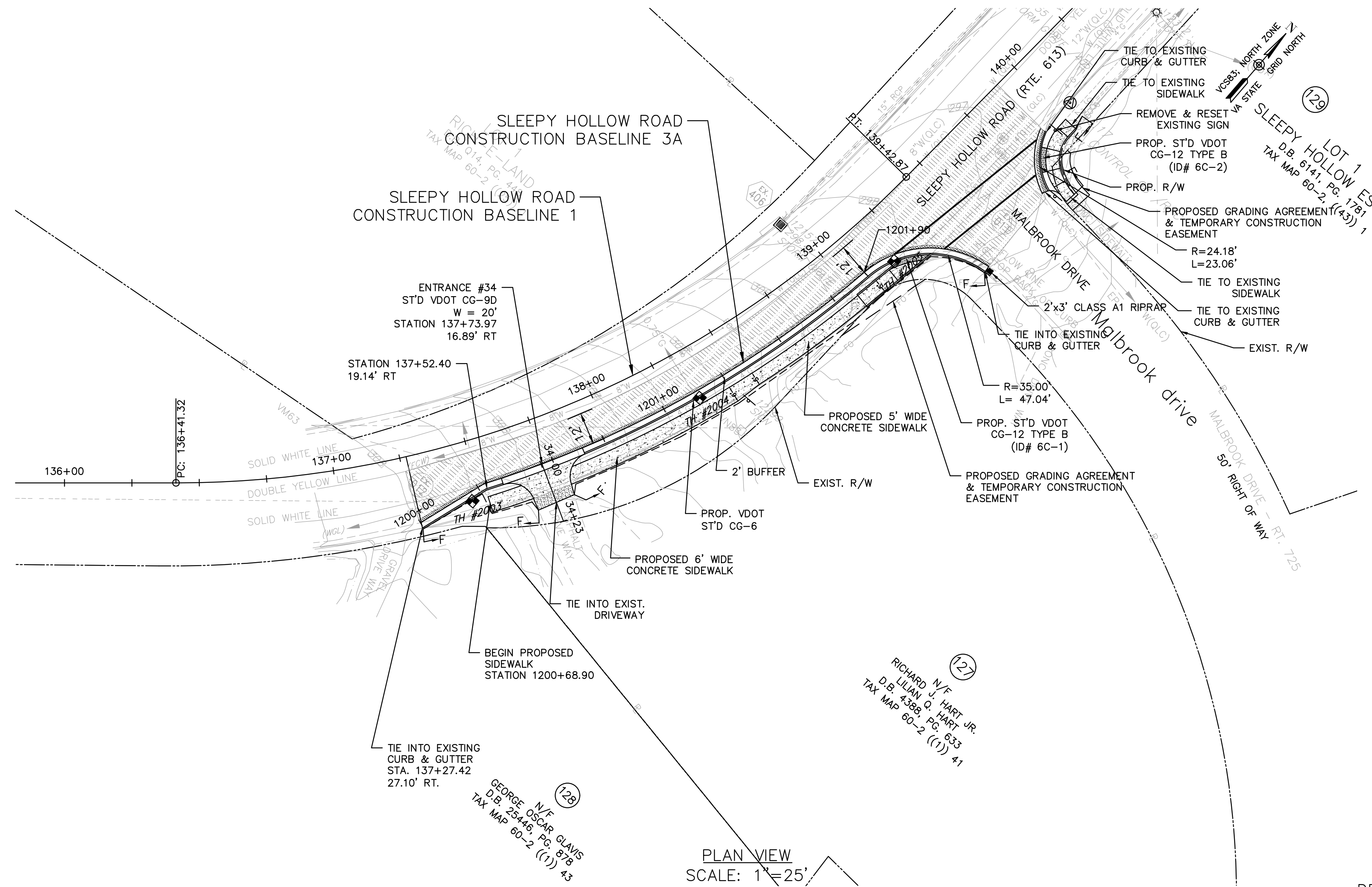


PROJECT MANAGER - MARK VANZANDI, (703) 877-5600 - TDD of Fairfax County
 SURVEYED BY, DATE - FAIRFAX COUNTY DOT SURVEY DEPARTMENT, AUGUST 4, 2016 (703) 877-5600
 DESIGN BY EMMANUEL ABRANYOS, P.E., (571) 218-1000 - JACOBS
 SUBSURFACE UTILITY BY, DATE - ACCUMARK, 1-800-542-2990, 08/21/17



LEGEND

- CLASS A4 CONCRETE
- ASPHALT DRIVEWAY
- DETECTABLE WARNING SURFACE
- MILL AND OVERLAY
- FULL DEPTH PAVEMENT
- TREE REMOVAL
- PROP. R/W
- PROP. TEMP. CONST. EASEMENT

DENOTES CONSTRUCTION LIMITS IN CUTS
 DENOTES CONSTRUCTION LIMITS IN FILLS

NOTES:

- 1.) VDOT SHALL MAINTAIN PROPOSED CONCRETE SIDEWALK, CURB RAMPS, AND ENTRANCE GUTTERS.
- 2.) PROPOSED CONCRETE SIDEWALK AND CURB RAMPS SHALL DRAIN TOWARDS ROADWAY AT 2% MAX CROSS SLOPE.
- 3.) CONTRACTOR SHALL FULL DEPTH SAW CUT 1' INTO EXISTING ASPHALT PAVEMENT FOR THE INSTALLATION OF CURB & GUTTER AND/OR CURB RAMPS AND REPLACE ANY DISTURBED ASPHALT PAVEMENT WITH THE PAVEMENT SECTION PROVIDED ON TYPICAL SECTION SHEET 2C OR PROVIDE THE SAME PAVEMENT SECTION THICKNESS AS THE EXISTING PAVEMENT DEPTH.
- 4.) SEE SHEET 2D(1) TO 2D(5) FOR CURB RAMP DETAILS.
- 5.) REMOVE AND RELOCATE ALL IMPACTED HOUSE MARKER SIGNS AND MAIL BOXES AT THE ENTRANCES.
- 6.) SEE EROSION AND SEDIMENT CONTROL SHEETS FOR TREE REMOVAL.
- 7.) SEE SHEET 2D(5) FOR CURB RETURNS STATION & OFFSETS AND ELEVATION.
- 8.) MANHOLES FRAMES AND COVER SHALL BE FLUSH WITH GRADE AND PROTECTED DURING CONSTRUCTION

NOTES:

HORIZONTAL DATUM: VIRGINIA COORDINATE SYSTEM NORTH ZONE #4501
 VERTICAL DATUM: GEODETIC VERTICAL DATUM (NGVD), 1929

JACOBS
 Buildings and Infrastructure
 1100 North Glebe Road, Suite 500
 Arlington, Virginia 22201

EMMANUEL ABRANYOS
 2020.12.04
JACOBS
 Arlington, Virginia
 ROADWAY ENGINEER

EMERGENCY POLICE - FIRE - RESCUE 911				
FAIRFAX COUNTY, VIRGINIA				
DEPARTMENT OF PUBLIC WORKS AND ENVIRONMENTAL SERVICES				
UTILITIES DESIGN & CONSTRUCTION DIVISION				
12000 GOVERNMENT CENTER PARKWAY, SUITE 463 FAIRFAX, VA., 22035-0052				
			OFFICE OF CAPITAL FACILITIES 703-324-5800	
SLEEPY HOLLOW ROAD WALKWAYS				
PLAN SHEET				
CONTRACT NO. PROJECT NO. 2G40-088-028				
SCALE	DESIGNED: E. ABRANYOS	SHEET		
AS SHOWN	DRAFTED: A. PASCARELLI	6C		
	CHECKED: A. FARYAR			
FUND # 400-C40011				