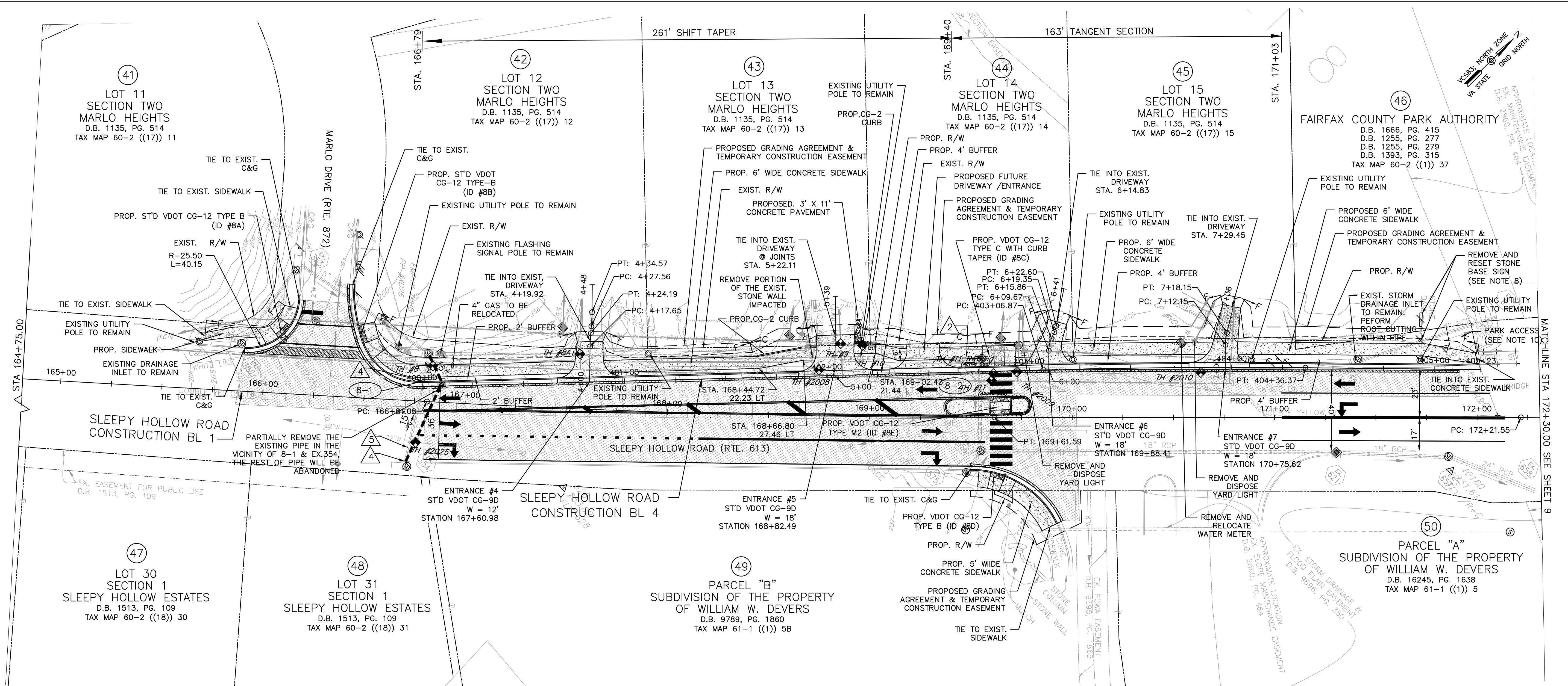


PROJECT MANAGER - MARK VANZANDI, (703) 877-5600 - TDD of Fairfax County
 SURVEYED BY DATE FAIRFAX COUNTY DOT SURVEY DEPARTMENT, AUGUST 4, 2016 (703) 877-5600
 DESIGN BY EMMANUEL ABRANYOS, P.E., (571) 218-1000 - JACOBS
 SUBSURFACE UTILITY BY DATE ACCUMARK, 1-800-542-2990, 08/21/17



PLAN VIEW
 SCALE: 1"=25'

DRAINAGE LEGEND

- 1. DRAINAGE TOP TO BE ADJUSTED
- 2. DRAINAGE STRUCTURE TO BE REMOVED
- 3. DRAINAGE STRUCTURE TO BE ABANDONED
- 4. DRAINAGE PIPE TO BE REMOVED
- 5. DRAINAGE PIPE TO BE ABANDONED
- 6. DRAINAGE STRUCTURE TO BE MODIFIED
- 7. DRAINAGE STRUCTURE TO BE MODIFIED
- 8. DRAINAGE STRUCTURE TO BE CAPPED UNDER PAVEMENT

LEGEND

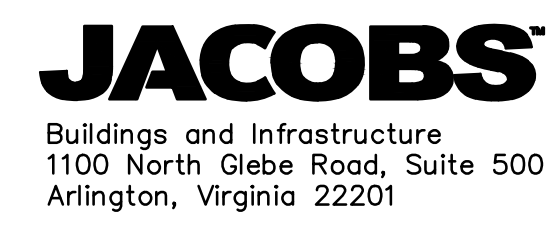
- CLASS A4 CONCRETE
- ASPHALT DRIVEWAY
- DETECTABLE WARNING SURFACE
- MILL AND OVERLAY
- FULL DEPTH PAVEMENT
- PROP. R/W
- PROP. TEMP. CONST. EASEMENT

C DENOTES CONSTRUCTION LIMITS IN CUTS
 F DENOTES CONSTRUCTION LIMITS IN FILLS

NOTES:

- 1.) VDOT SHALL MAINTAIN PROPOSED CONCRETE SIDEWALK, CURB RAMPS, AND ENTRANCE GUTTERS.
- 2.) PROPOSED CONCRETE SIDEWALK AND CURB RAMPS SHALL DRAIN TOWARDS ROADWAY AT 2% MAX CROSS SLOPE.
- 3.) CONTRACTOR SHALL FULL DEPTH SAW CUT 1' INTO EXISTING ASPHALT PAVEMENT FOR THE INSTALLATION OF CURB & GUTTER AND/OR CURB RAMPS AND REPLACE ANY DISTURBED ASPHALT PAVEMENT WITH THE PAVEMENT SECTION PROVIDED ON TYPICAL SECTION SHEET 2C OR PROVIDE THE SAME PAVEMENT SECTION THICKNESS AS THE EXISTING PAVEMENT DEPTH.
- 4.) SEE SHEET 2D(1) TO 2D(5) FOR CURB RAMP DETAILS.
- 5.) REMOVE AND RELOCATE ALL IMPACTED HOUSE MARKER SIGNS AND MAIL BOXES AT THE ENTRANCES.
- 6.) SEE EROSION AND SEDIMENT CONTROL SHEETS FOR TREE REMOVAL.
- 7.) SEE SHEETS 2D(2) & 2D(5) FOR CURB RETURNS AND PEDESTRIAN REFUGEE ISLAND STATION & OFFSET AND ELEVATION.
- 8.) FINAL SIGN LOCATION TO BE FIELD VERIFIED WITH FCPA STAFF AMBER STRAMEL.
- 9.) PRIOR TO COMMENCEMENT OF WORK, A "NOTICE OF WORK PACKAGE" MUST BE COMPLETED. CONTACT YUDHIE BROWNSON AT FCPA.
- 10.) CONNECT EXISTING NATURAL SURFACE TRAIL TO PROPOSED SIDEWALK USING 3 INCH AGGREGATE BASE MATERIAL 21B. GRADE CONNECTION AS FLAT AS SITE PERMIT NOT TO EXCEED 5% SLOPE.
- 11.) MANHOLES FRAMES AND COVER SHALL BE FLUSH WITH GRADE AND PROTECTED DURING CONSTRUCTION.

NOTES:
 HORIZONTAL DATUM: VIRGINIA COORDINATE SYSTEM NORTH ZONE #4501
 VERTICAL DATUM: GEODETIC VERTICAL DATUM (NGVD), 1929



EMMANUEL ABRANYOS
 2020.12.04
JACOBS
 Arlington, Virginia
 ROADWAY ENGINEER

EMERGENCY POLICE - FIRE - RESCUE 911
FAIRFAX COUNTY, VIRGINIA
 DEPARTMENT OF PUBLIC WORKS AND ENVIRONMENTAL SERVICES
 UTILITIES DESIGN & CONSTRUCTION DIVISION
 12000 GOVERNMENT CENTER PARKWAY, SUITE 463 FAIRFAX, VA., 22035-0052

R	E	V	I	S	I	O	N	S
#	DESCRIPTION	BY	APPROVED	DATE				

OFFICE OF CAPITAL FACILITIES
 703-324-5800

SLEEPY HOLLOW ROAD WALKWAYS
 PLAN SHEET

CONTRACT NO. PROJECT NO. 2G40-088-028

SCALE AS SHOWN DESIGNED: E. ABRANYOS SHEET 8
 DRAFTED: A. PASCARELLI
 CHECKED: A. FARYAR

LANE SHIFT COMPUTATION

W - WIDTH OF SHIFT (12')
 S - ROAD DESIGN SPEED (35 MPH)
 L - LENGTH REQUIRED FOR SHIFT

$$L = \frac{(WS^2)^2}{60}$$

$$= \frac{(12 * 35^2)^2}{60}$$

$$= 245 \text{ FT.}$$

MINIMUM TANGENT SECTION LENGTH BETWEEN TWO CONSECUTIVE LANE SHIFT TAPERS 150 FEET.