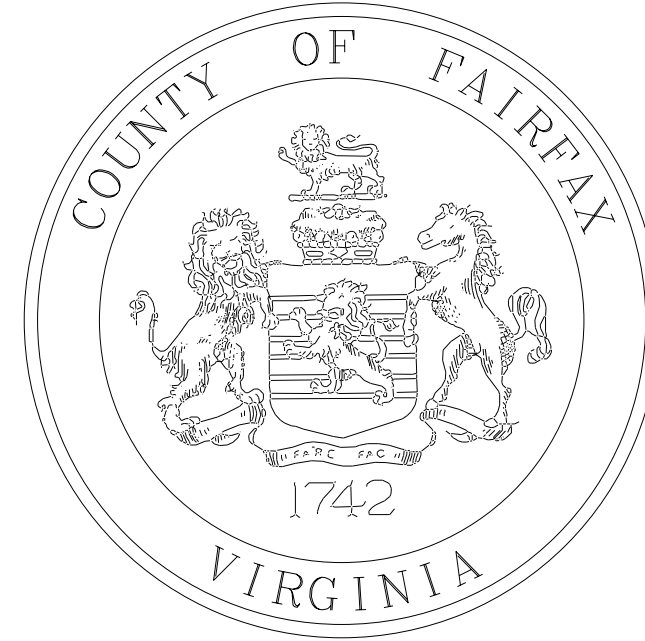


INDEX OF SHEETS

SHEET:	DESCRIPTION:
1	TITLE SHEET
1A	RIGHT OF WAY DATA SHEET
1B	SURVEY DATA SHEET
1C(1)-1C(2)	CONSTRUCTION ALIGNMENT DATA
2(1)	GENERAL NOTES
2(2)	GENERAL NOTES: UTILITIES
2A	TYPICAL SECTIONS
3-10	SHARED USE PATH PLAN
3(A)-10(A)	PROFILE SHEET
3(B)-10(B)	EROSION AND SEDIMENT CONTROL PHASE I
3(C)-10(C)	EROSION AND SEDIMENT CONTROL PHASE II

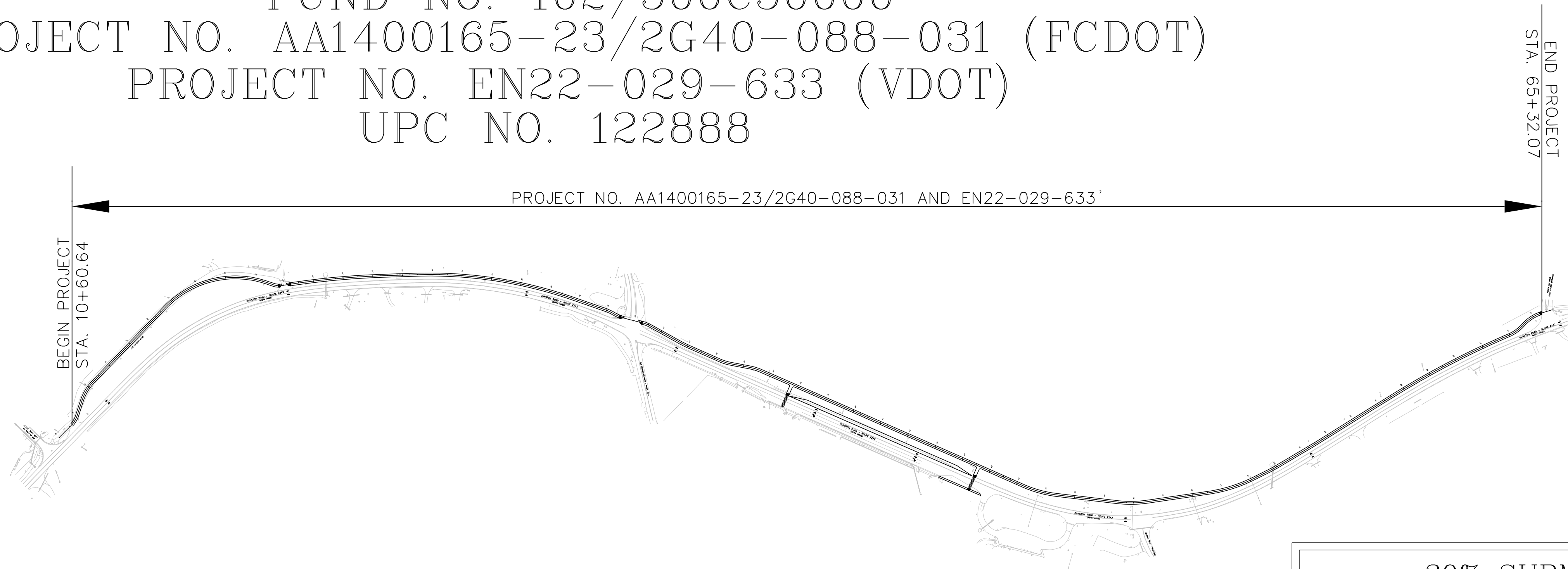
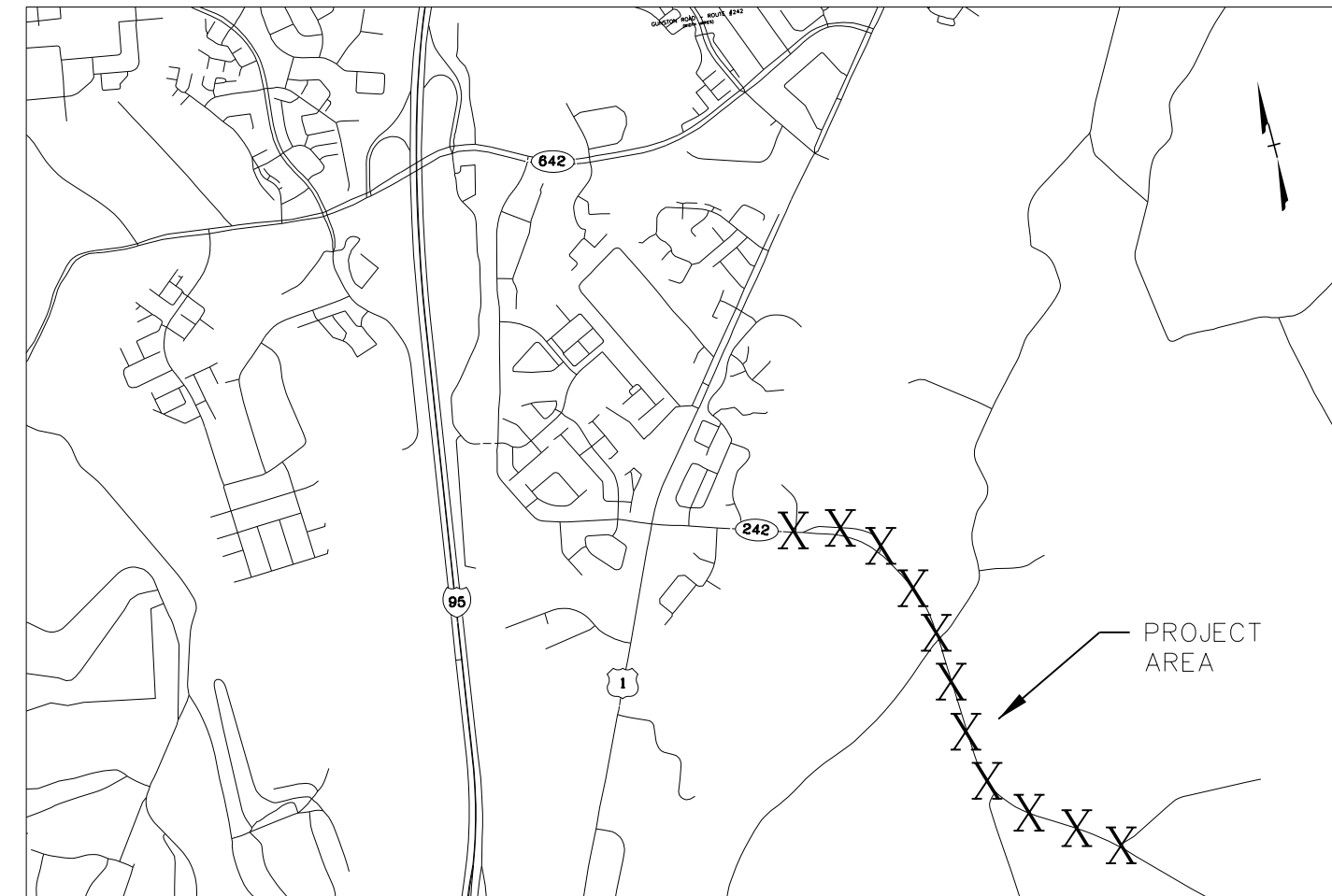


FAIRFAX COUNTY, VIRGINIA
 DEPARTMENT OF PUBLIC WORKS
 AND ENVIRONMENTAL SERVICES
 FUND NO. 102/500C50000
 PROJECT NO. AA1400165-23/2G40-088-031 (FCDOT)
 PROJECT NO. EN22-029-633 (VDOT)
 UPC NO. 122888

STATE	FEDERAL AID PROJECT	ROUTE	STATE PROJECT	SHEET NO.
VA	TAP-5B01(566)	242	EN22-029-633	1

FUNCTIONAL CLASSIFICATION	
STREET NAME	SHARED USE PATH ALONG - RT 242
STREET CLASS	SHARED USE PATH
AADT (2019)	N/A
AADT (2040)	N/A
DHV	N/A
D (%)	N/A
T (%)	N/A
DESIGN V (MPH)	18 MINIMUM (SUP)
POSTED V (MPH)	N/A
DESIGN VEHICLE	N/A
CONTROL VEHICLE	N/A

FAIRFAX COUNTY
 PROJECT LOCATION MAP
 SCALE 1" = 2000'



VICINITY MAP
 SCALE: 1" = 250'

DISTRICT NAME: FORT BELVOIR
 TAX MAP: 113-2, 114-1, 114-3

30% SUBMISSION
 JULY 2024

THESE PLANS ARE UNFINISHED AND UNAPPROVED AND ARE NOT TO BE USED FOR ANY TYPE OF CONSTRUCTION OR THE ACQUISITION OF RIGHT OF WAY.

MASON NECK SHARED USE PATH
 GUNSTON ROAD FROM JULIA TAFT WAY
 TO POHICK BAY DRIVE (GOLF COURSE ENTRANCE)

MAINTENANCE LEGEND:

XXX-VDOT
 5471 LF-SHARED USE PATH

DESIGN FEATURES RELATING TO CONSTRUCTION OR REGULATION AND CONTROL OF TRAFFIC MAY BE SUBJECT TO CHANGE AS DEEMED NECESSARY BY THE VIRGINIA DEPARTMENT OF TRANSPORTATION

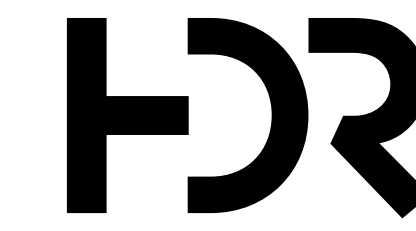
THIS PROJECT IS TO BE CONSTRUCTED IN ACCORDANCE WITH THE DEPARTMENT'S:

- ROAD AND BRIDGE SPECIFICATIONS DATED 2020
- ROAD AND BRIDGE STANDARDS, DATED 2016, REVISED 2020
- MANUAL ON UNIFORM TRAFFIC CONTROL DEVICES (MUTCD), DATED 2009
- VIRGINIA SUPPLEMENT TO THE 2009 MUTCD, DATED 2011, REVISED 2013
- VIRGINIA WORK AREA PROTECTION MANUAL, DATED 2011, REVISED 2019

AND AS AMENDED BY CONTRACT PROVISIONS AND THE COMPLETE ELECTRONIC PDF VERSION OF THE PLAN ASSEMBLY.

ALL CURVES ARE TO BE SUPERELEVATED, TRANSITIONED, AND WIDENED IN ACCORDANCE WITH STANDARD TC-5.11U EXCEPT WHERE OTHERWISE NOTED.

STATE PROJECT NO.	SECTION	FEDERAL AID PROJECT NO.	TYPE CODE	UPC NO.	EQUALITIES		LENGTH INCLUDING BRIDGE(S)		LENGTH EXCLUDING BRIDGE(S)		BRIDGE PLAN NO.	TYPE PROJECT	DESCRIPTION
					FEET	MILES	FEET	MILES	FEET	MILES			
EN22-029-633	P101	TAP-5B01(566)	PENG	122888			5,471	1.04	5,471	1.04		PREL. ENGR.	GUNSTON ROAD FROM JULIA TAFT WAY TO POHICK BAY DRIVE



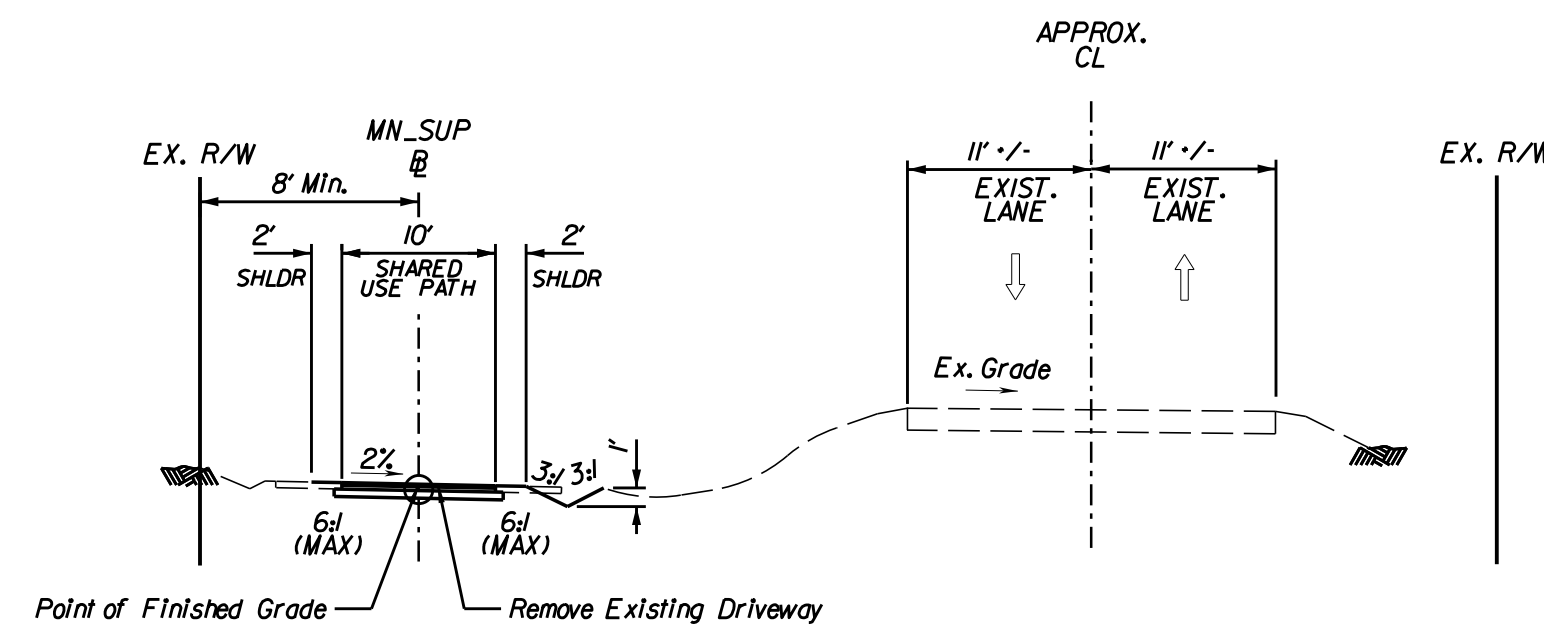
HDR Engineering, Inc.

HDR ENGINEERING, INC.
 VIENNA, VIRGINIA
 ROADWAY ENGINEER

LOCALLY ADMINISTERED PROJECTS	
FAIRFAX COUNTY	
NAME OF LOCALITY	
W. TODD MINNIX, PE	
RECOMMENDED FOR APPROVAL FOR RIGHT-OF-WAY ACQUISITION	
DATE	TITLE OF POSITION
RECOMMENDED FOR APPROVAL FOR CONSTRUCTION	
DATE	TITLE OF POSITION

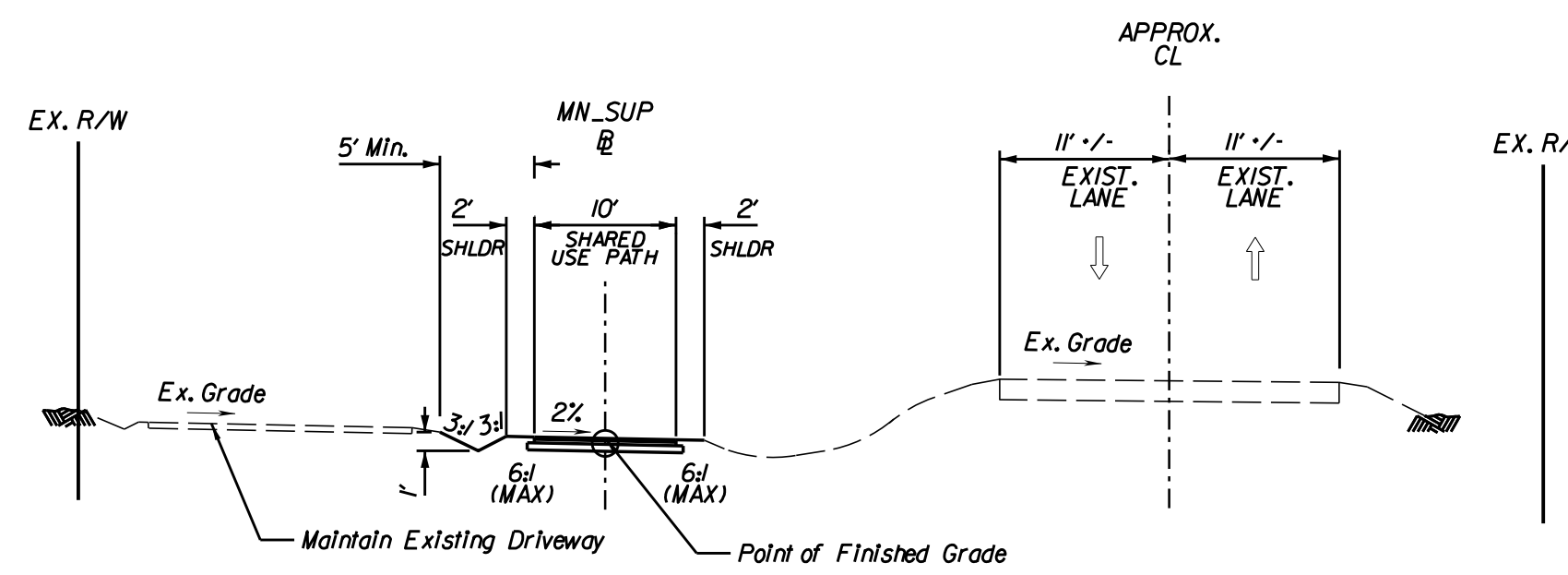
Plotted By: YAKGARI
 MNT(2G40-088-031)_01.dgn
 Date: 7/29/2024 12:24:25 PM

TYPICAL SECTIONS



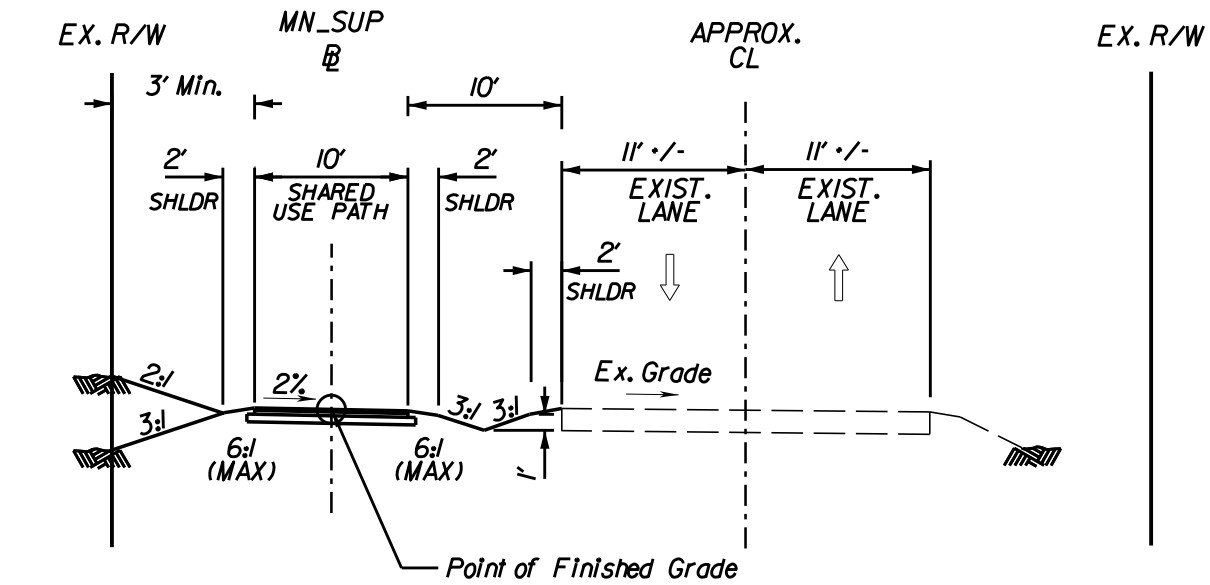
SHARED USE PATH GUNSTON ROAD

STATION	TO	STATION
11-00		17-00



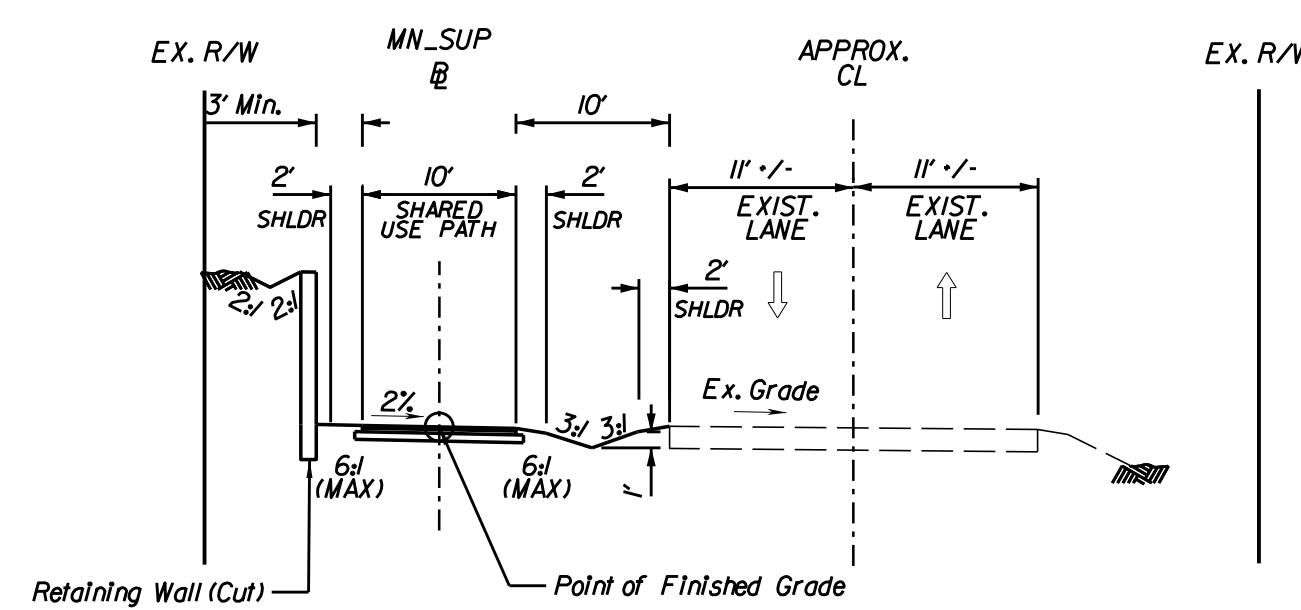
SHARED USE PATH GUNSTON ROAD

STATION	TO	STATION
17-00		20-00



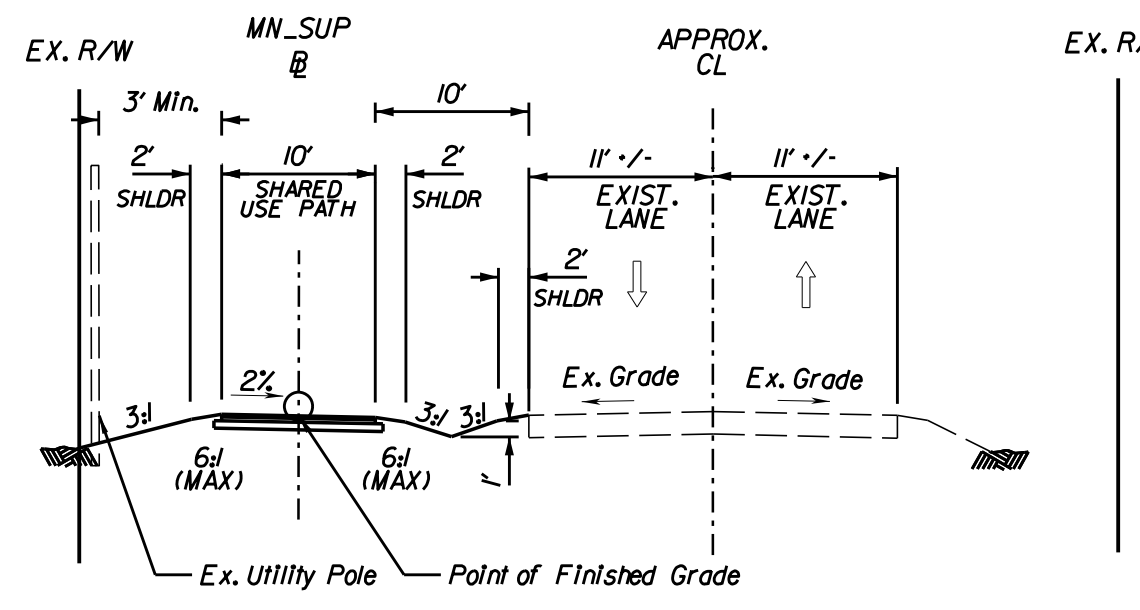
SHARED USE PATH GUNSTON ROAD

STATION	TO	STATION
20-00		32-50 (Retaining Wall at Station 26-31 to 27-46 - See Next Typical Section)



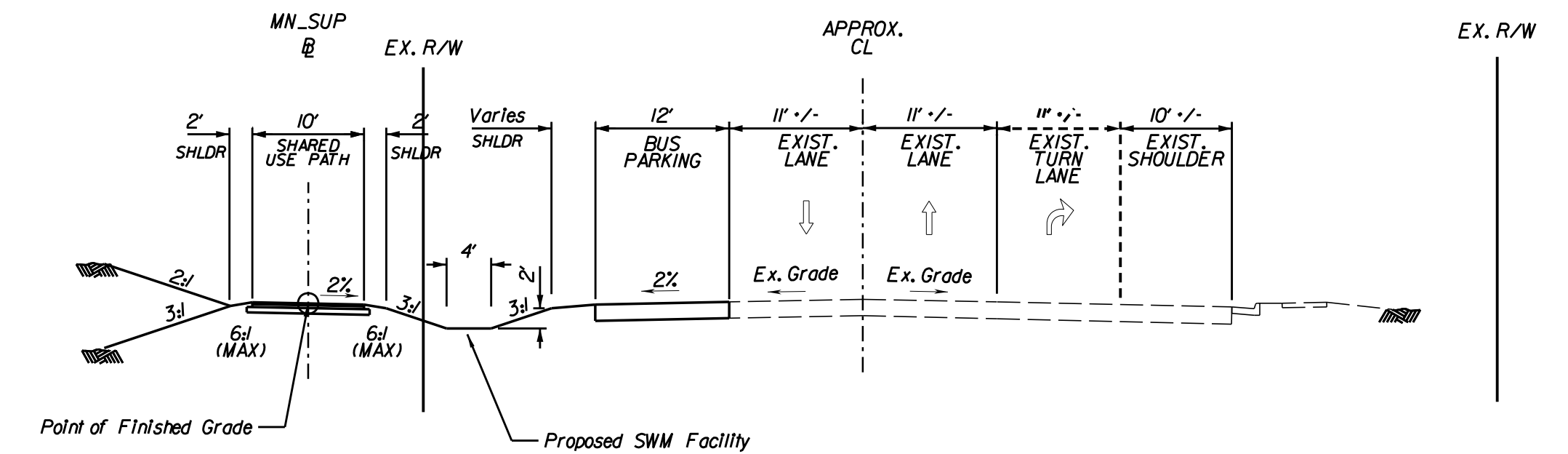
SHARED USE PATH GUNSTON ROAD

STATION	TO	STATION
26-31		27-46



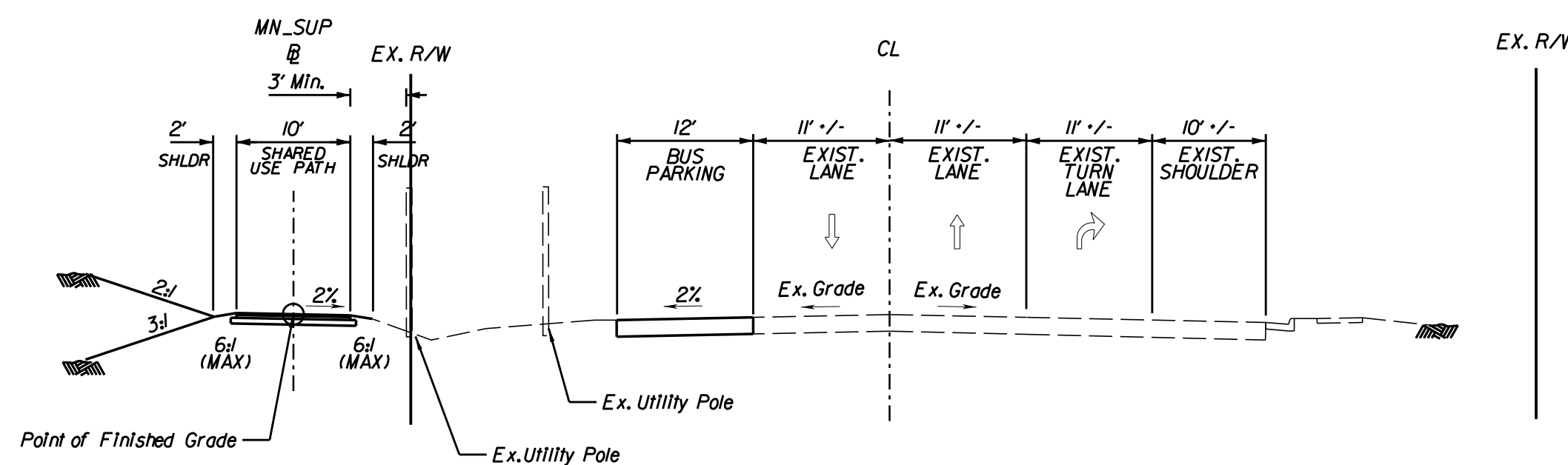
SHARED USE PATH GUNSTON ROAD

STATION	TO	STATION
32-50		35-62



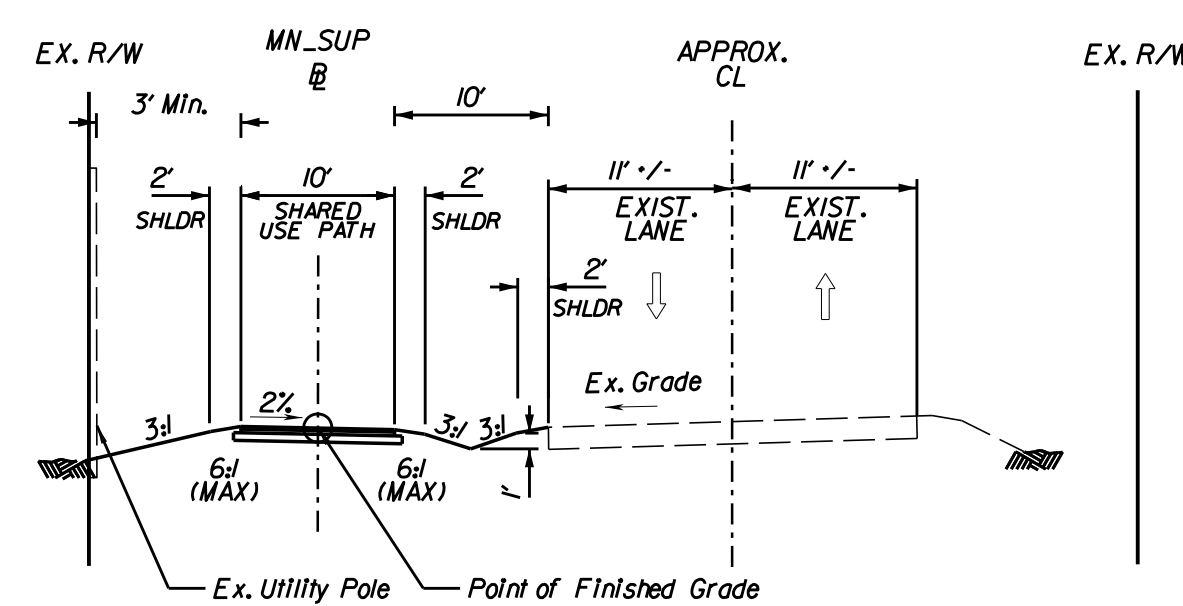
SHARED USE PATH (SWM FACILITY LOCATIONS) GUNSTON ROAD

STATION	TO	STATION
35-62		36-86
37-90		39-58
39-78		41-96
42-15		44-37
44-71		46-63



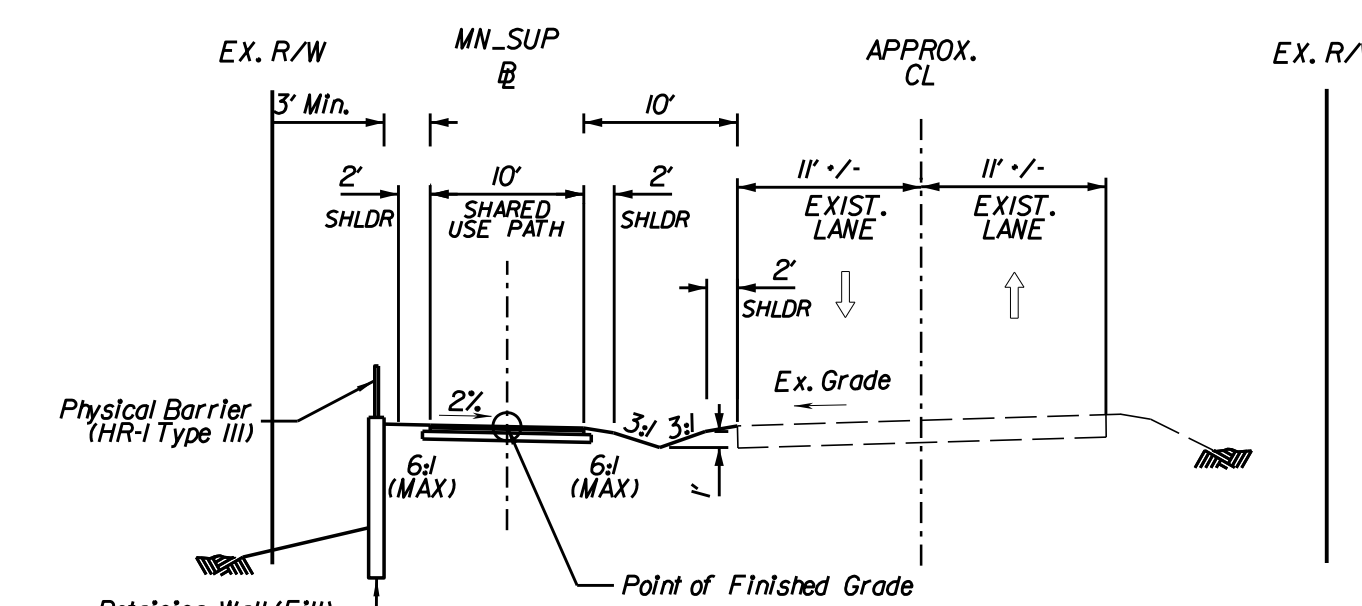
SHARED USE PATH (UTILITY POLE LOCATIONS) GUNSTON ROAD

STATION	TO	STATION
36-86		37-90
39-58		39-78
41-96		42-15
44-37		44-71



SHARED USE PATH GUNSTON ROAD

STATION	TO	STATION
46-63		65-00 (Retaining Wall at Station 54-07 to 55-46 - See Next Typical Section)



SHARED USE PATH GUNSTON ROAD

STATION	TO	STATION
54-07		55-46

30% SUBMISSION

THESE PLANS ARE UNFINISHED AND UNAPPROVED AND ARE NOT TO BE USED FOR ANY TYPE OF CONSTRUCTION OR THE ACQUISITION OF RIGHT OF WAY.

EMERGENCY POLICE - FIRE - RESCUE 911

FAIRFAX COUNTY, VIRGINIA
DEPARTMENT OF PUBLIC WORKS AND ENVIRONMENTAL SERVICES PLANNING & DESIGN DIVISION
12000 GOVERNMENT CENTER PARKWAY, SUITE 449 FAIRFAX, VA 22035-0052

CAPITAL FACILITIES		703-324-5800	
MASON NECK SHARED USE PATH			
TYPICAL SECTIONS			
PROJECT NO. AA1400165-23/2G40-088-031(FCD0T)			
SCALE		DESIGNED BY: YA	SHEET
HORIZ. 1" = 25'		DRAFTED BY: YA	2A
VERT. N/A		CHECKED BY: BTM	

HDR ENGINEERING, INC.
VIENNA, VIRGINIA
ROADWAY ENGINEER

DESCRIPTION	BY	APPROVED	DATE

$PI = 10+75.38$
 $DELTA = 27^{\circ}01'33.52'' (LT)$
 $D = 71^{\circ}37'11''$
 $T = 19.23'$
 $L = 37.74'$
 $R = 80.00'$
 $PC = 10+56.15$
 $PT = 10+93.89$

INDIAN SPRINGS ESTATES
 D.B. 24185, PG. 1940
 TAX MAP 113-2 ((13)) 1
 THIS PARCEL MAY BE SUBJECT TO A
 NONLOCATABLE AT&T EASEMENT RECORDED
 IN DEED BOOK 2557, PAGE 211.

BOARD OF SUPERVISORS FAIRFAX COUNTY
 D.B. 7350, PG. 1187
 TAX MAP 113-2 ((1)) 13


THIS PARCEL MAY BE SUBJECT TO A
 NONLOCATABLE AT&T EASEMENT RECORDED
 IN DEED BOOK 2660, PAGE 254.

$PI = 11+86.72$
 $DELTA = 26^{\circ}01'06.22'' (RT)$
 $D = 34^{\circ}56'11''$
 $T = 37.89'$
 $L = 74.47'$
 $R = 164.00'$
 $PC = 11+48.83$
 $PT = 12+23.30$

30% SUBMISSION

THESE PLANS ARE UNFINISHED AND
 UNAPPROVED AND ARE NOT TO BE
 USED FOR ANY TYPE OF CONSTRUCTION
 OR THE ACQUISITION OF RIGHT OF WAY.

EMERGENCY POLICE - FIRE - RESCUE 911
 FAIRFAX COUNTY, VIRGINIA
 DEPARTMENT OF PUBLIC WORKS AND ENVIRONMENTAL SERVICES PLANNING & DESIGN DIVISION
 12000 GOVERNMENT CENTER PARKWAY, SUITE 449 FAIRFAX, VA 22035-0052


CAPITAL FACILITIES
 703-324-5800

MASON NECK SHARED USE PATH
 SHARED USE PATH PLAN

PROJECT NO. AA1400165-23/2G40-088-031(FCDOT)

SCALE
 HORIZ. 1" = 25'
 VERT. N/A

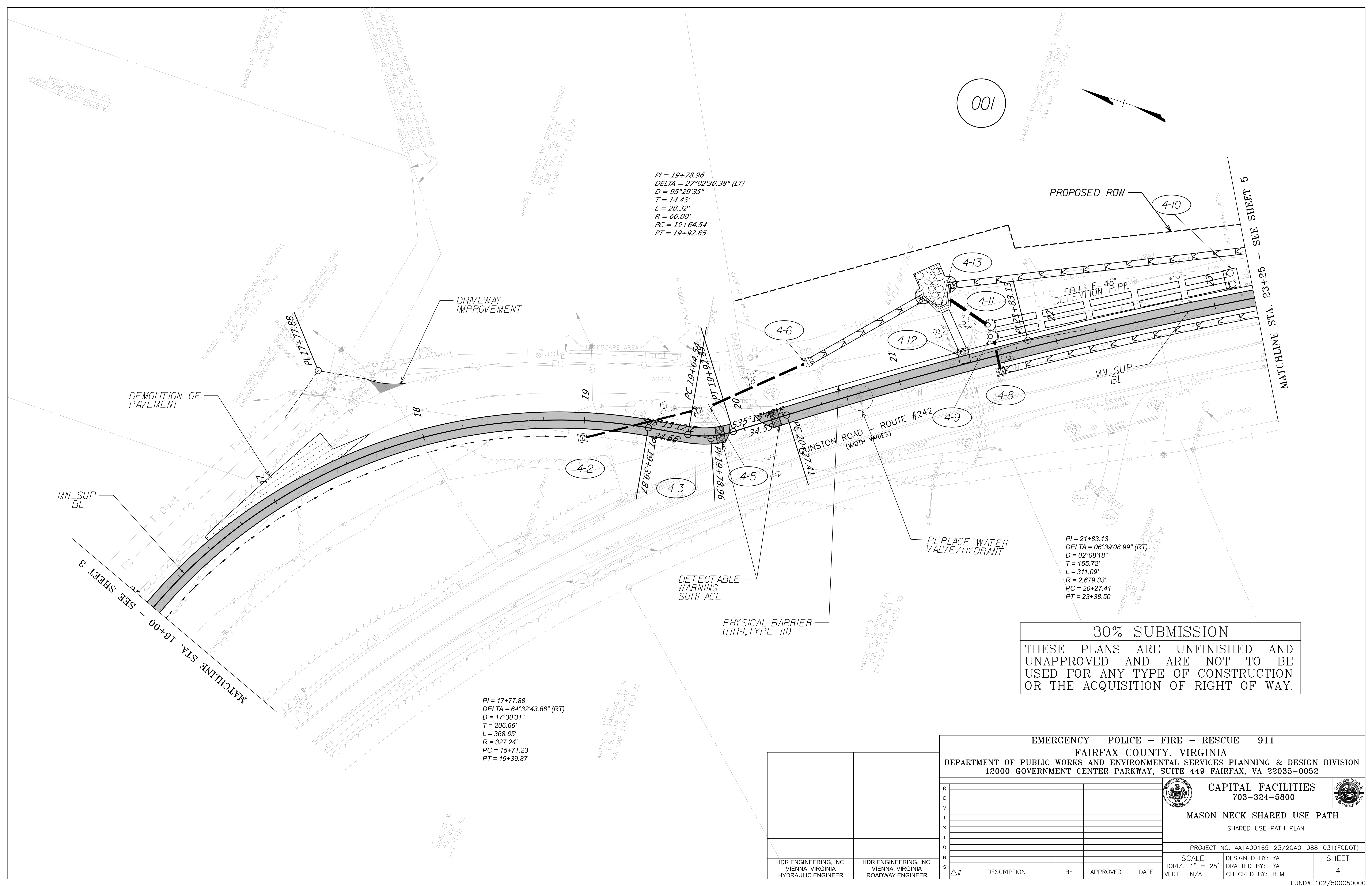
DESIGNED BY: YA
 DRAFTED BY: YA
 CHECKED BY: BTM

SHEET
 3

HDR ENGINEERING, INC. VIENNA, VIRGINIA HYDRAULIC ENGINEER	HDR ENGINEERING, INC. VIENNA, VIRGINIA ROADWAY ENGINEER
---	---

Δ#	DESCRIPTION	BY	APPROVED	DATE

Plotted By: YAKBARI
 File: MNT2G40-088-031_04.dgn
 Date: 7/29/2024 12:28:41 PM



PI = 19+78.96
 DELTA = 27°02'30.38" (LT)
 D = 95°29'35"
 T = 14.43'
 L = 28.32'
 R = 60.00'
 PC = 19+64.54
 PT = 19+92.85

PI = 21+83.13
 DELTA = 06°39'08.99" (RT)
 D = 02°08'18"
 T = 155.72'
 L = 311.09'
 R = 2,679.33'
 PC = 20+27.41
 PT = 23+38.50

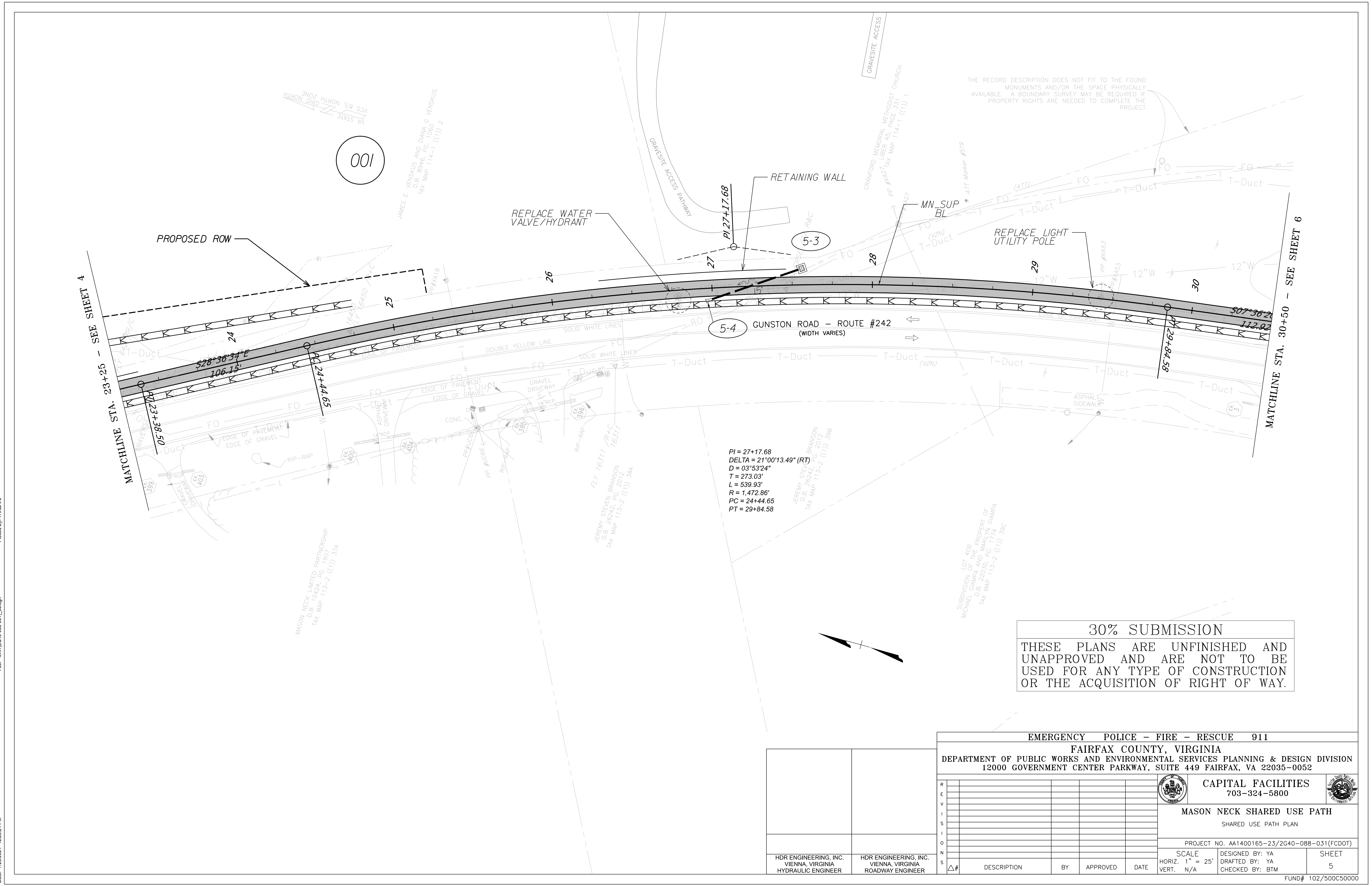
PI = 17+77.88
 DELTA = 64°32'43.66" (RT)
 D = 17°30'31"
 T = 206.66'
 L = 368.65'
 R = 327.24'
 PC = 15+71.23
 PT = 19+39.87

30% SUBMISSION
 THESE PLANS ARE UNFINISHED AND UNAPPROVED AND ARE NOT TO BE USED FOR ANY TYPE OF CONSTRUCTION OR THE ACQUISITION OF RIGHT OF WAY.

EMERGENCY POLICE - FIRE - RESCUE 911			
FAIRFAX COUNTY, VIRGINIA DEPARTMENT OF PUBLIC WORKS AND ENVIRONMENTAL SERVICES PLANNING & DESIGN DIVISION 12000 GOVERNMENT CENTER PARKWAY, SUITE 449 FAIRFAX, VA 22035-0052			
CAPITAL FACILITIES 703-324-5800		MASON NECK SHARED USE PATH SHARED USE PATH PLAN	
PROJECT NO. AA1400165-23/2G40-088-031(FCDOT)			
SCALE	DESIGNED BY: YA	SHEET	
HORIZ. 1" = 25'	DRAFTED BY: YA	4	
VERT. N/A	CHECKED BY: BTM		
R			
E			
V			
I			
S			
I			
O			
N			
Δ#	DESCRIPTION	BY	APPROVED DATE

HDR ENGINEERING, INC.
 VIENNA, VIRGINIA
 HYDRAULIC ENGINEER

HDR ENGINEERING, INC.
 VIENNA, VIRGINIA
 ROADWAY ENGINEER



EMERGENCY POLICE - FIRE - RESCUE 911
 FAIRFAX COUNTY, VIRGINIA
 DEPARTMENT OF PUBLIC WORKS AND ENVIRONMENTAL SERVICES PLANNING & DESIGN DIVISION
 12000 GOVERNMENT CENTER PARKWAY, SUITE 449 FAIRFAX, VA 22035-0052

CAPITAL FACILITIES
 703-324-5800
 MASON NECK SHARED USE PATH
 SHARED USE PATH PLAN

PROJECT NO. AA1400165-23/2G40-088-031(FCDOT)

HDR ENGINEERING, INC.
 VIENNA, VIRGINIA
 HYDRAULIC ENGINEER

HDR ENGINEERING, INC.
 VIENNA, VIRGINIA
 ROADWAY ENGINEER

SCALE
 HORIZ. 1" = 25'
 VERT. N/A

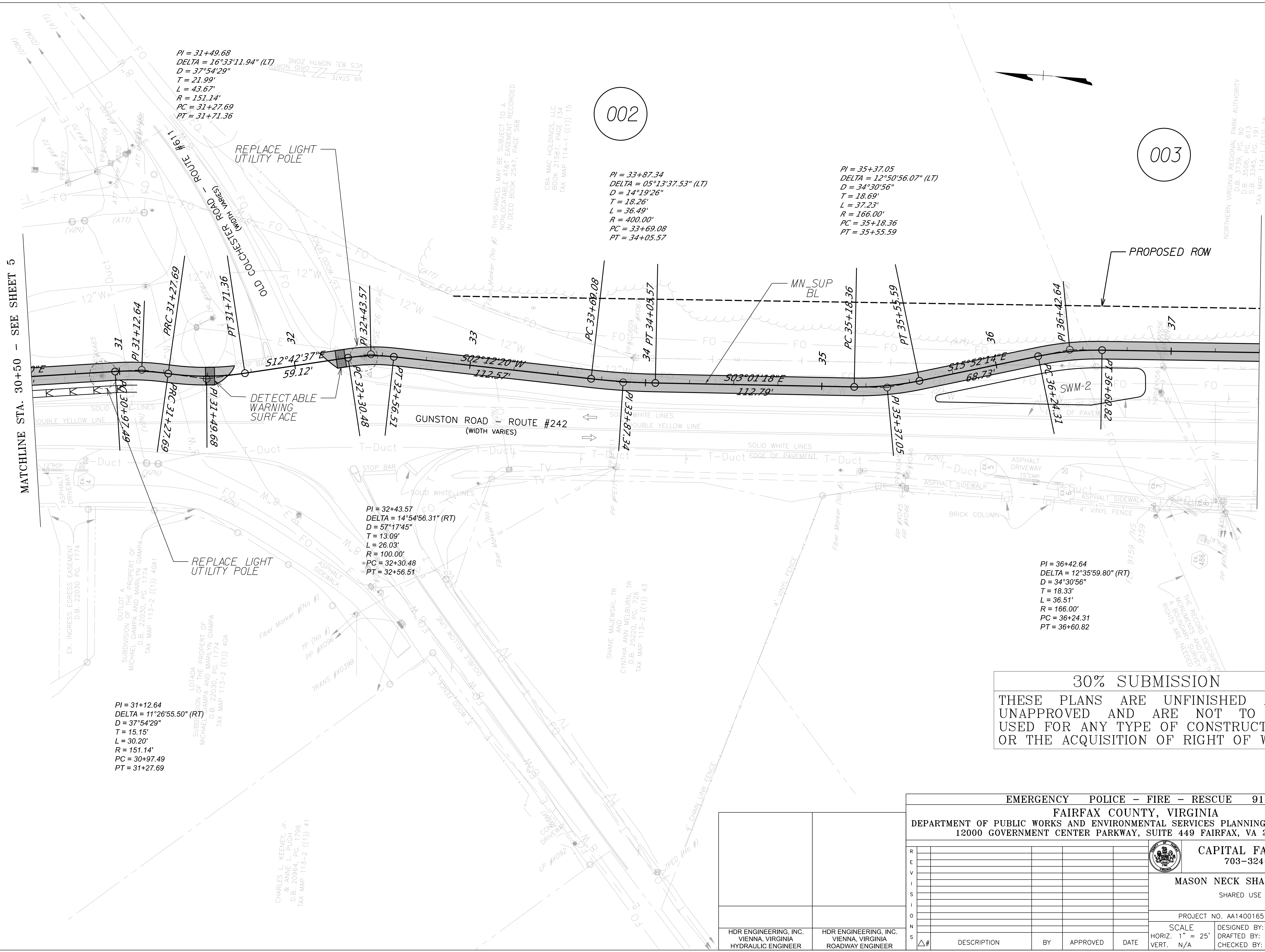
DESIGNED BY: YA
 DRAFTED BY: YA
 CHECKED BY: BTM

SHEET
 5

Δ#	DESCRIPTION	BY	APPROVED	DATE

MATCHLINE STA. 30+50 - SEE SHEET 5

MATCHLINE STA. 37+50 - SEE SHEET 7



$PI = 31+49.68$
 $DELTA = 16^{\circ}33'11.94'' (LT)$
 $D = 37^{\circ}54'29''$
 $T = 21.99'$
 $L = 43.67'$
 $R = 151.14'$
 $PC = 31+27.69$
 $PT = 31+71.36$

002

$PI = 33+87.34$
 $DELTA = 05^{\circ}13'37.53'' (LT)$
 $D = 14^{\circ}19'26''$
 $T = 18.26'$
 $L = 36.49'$
 $R = 400.00'$
 $PC = 33+69.08$
 $PT = 34+05.57$

$PI = 35+37.05$
 $DELTA = 12^{\circ}50'56.07'' (LT)$
 $D = 34^{\circ}30'56''$
 $T = 18.69'$
 $L = 37.23'$
 $R = 166.00'$
 $PC = 35+18.36$
 $PT = 35+55.59$

003

$PI = 31+12.64$
 $DELTA = 11^{\circ}26'55.50'' (RT)$
 $D = 37^{\circ}54'29''$
 $T = 15.15'$
 $L = 30.20'$
 $R = 151.14'$
 $PC = 30+97.49$
 $PT = 31+27.69$

$PI = 32+43.57$
 $DELTA = 14^{\circ}54'56.31'' (RT)$
 $D = 57^{\circ}17'45''$
 $T = 13.09'$
 $L = 26.03'$
 $R = 100.00'$
 $PC = 32+30.48$
 $PT = 32+56.51$

$PI = 36+42.64$
 $DELTA = 12^{\circ}35'59.80'' (RT)$
 $D = 34^{\circ}30'56''$
 $T = 18.33'$
 $L = 36.51'$
 $R = 166.00'$
 $PC = 36+24.31$
 $PT = 36+60.82$

30% SUBMISSION

THESE PLANS ARE UNFINISHED AND UNAPPROVED AND ARE NOT TO BE USED FOR ANY TYPE OF CONSTRUCTION OR THE ACQUISITION OF RIGHT OF WAY.

Date: 7/29/2024 12:30:07 PM
 File: MNT2G40-088-031_06.dgn
 Plotted By: YAKBARI

EMERGENCY POLICE - FIRE - RESCUE 911
FAIRFAX COUNTY, VIRGINIA
 DEPARTMENT OF PUBLIC WORKS AND ENVIRONMENTAL SERVICES PLANNING & DESIGN DIVISION
 12000 GOVERNMENT CENTER PARKWAY, SUITE 449 FAIRFAX, VA 22035-0052

CAPITAL FACILITIES
 703-324-5800

MASON NECK SHARED USE PATH
 SHARED USE PATH PLAN

PROJECT NO. AA1400165-23/2G40-088-031(FCDOT)

SCALE	DESIGNED BY: YA	SHEET
HORIZ. 1" = 25'	DRAFTED BY: YA	6
VERT. N/A	CHECKED BY: BTM	

HDR ENGINEERING, INC. VIENNA, VIRGINIA HYDRAULIC ENGINEER	HDR ENGINEERING, INC. VIENNA, VIRGINIA ROADWAY ENGINEER
---	---

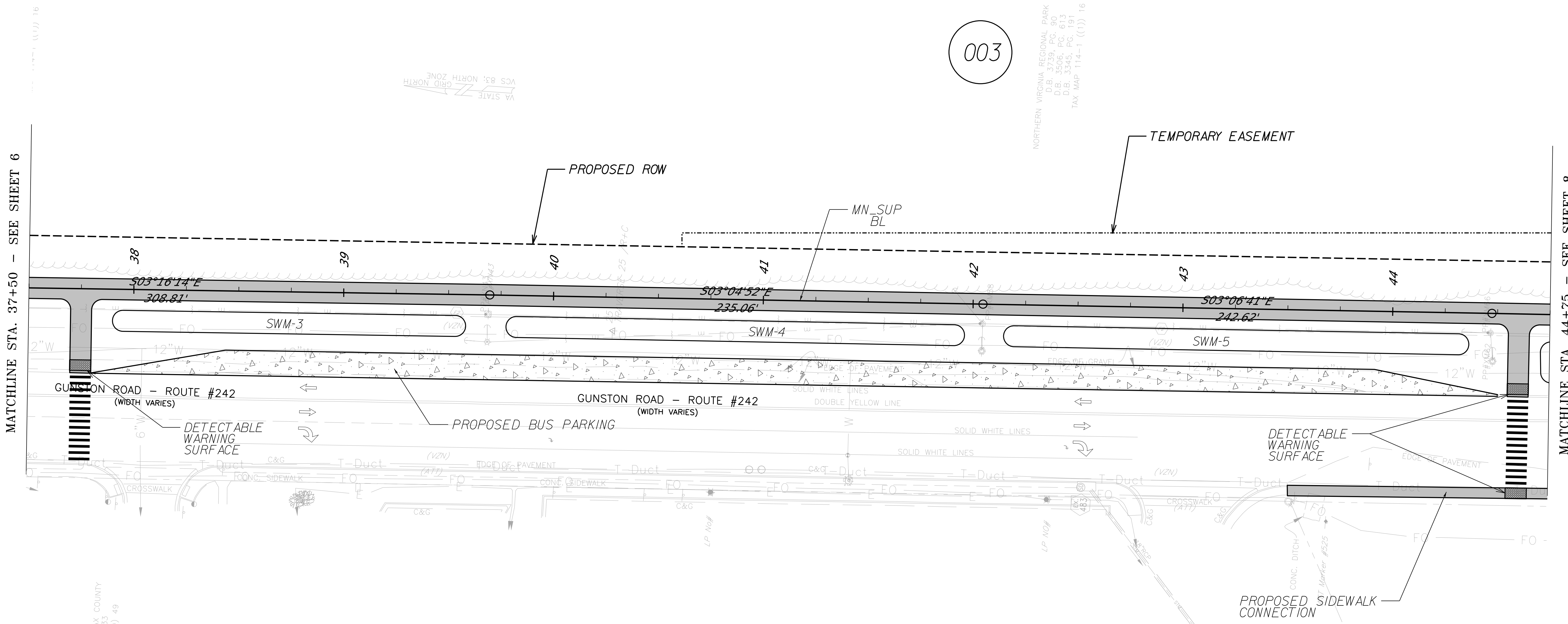
#	DESCRIPTION	BY	APPROVED	DATE

FUND# 102/500C5000

Plotted By: YAKBARI

File: MNT2G40-088-031_07.dgn

Date: 7/29/2024 12:30:50 PM



003

VA STATE GRID NORTH
VCS 83: NORTH ZONE

NORTHERN VIRGINIA REGIONAL PARK AUTHORITY
D.B. 3739, PG. 610
D.B. 3506, PG. 610
D.B. 3345, PG. 191
TAX MAP 114-1 ((1)) 16

SCHOOL BOARD OF FAIRFAX COUNTY
D.B. 1128, PG. 233
TAX MAP 113-2 ((1)) 49

SCHOOL BOARD OF FAIRFAX COUNTY
D.B. 1128, PG. 233
TAX MAP 113-2 ((1)) 49

30% SUBMISSION
 THESE PLANS ARE UNFINISHED AND UNAPPROVED AND ARE NOT TO BE USED FOR ANY TYPE OF CONSTRUCTION OR THE ACQUISITION OF RIGHT OF WAY.

EMERGENCY POLICE - FIRE - RESCUE 911
 FAIRFAX COUNTY, VIRGINIA
 DEPARTMENT OF PUBLIC WORKS AND ENVIRONMENTAL SERVICES PLANNING & DESIGN DIVISION
 12000 GOVERNMENT CENTER PARKWAY, SUITE 449 FAIRFAX, VA 22035-0052



CAPITAL FACILITIES
703-324-5800



MASON NECK SHARED USE PATH
SHARED USE PATH PLAN

PROJECT NO. AA1400165-23/2G40-088-031(FCDOT)

HDR ENGINEERING, INC. VIENNA, VIRGINIA HYDRAULIC ENGINEER	HDR ENGINEERING, INC. VIENNA, VIRGINIA ROADWAY ENGINEER
---	---

NO.	DESCRIPTION	BY	APPROVED	DATE

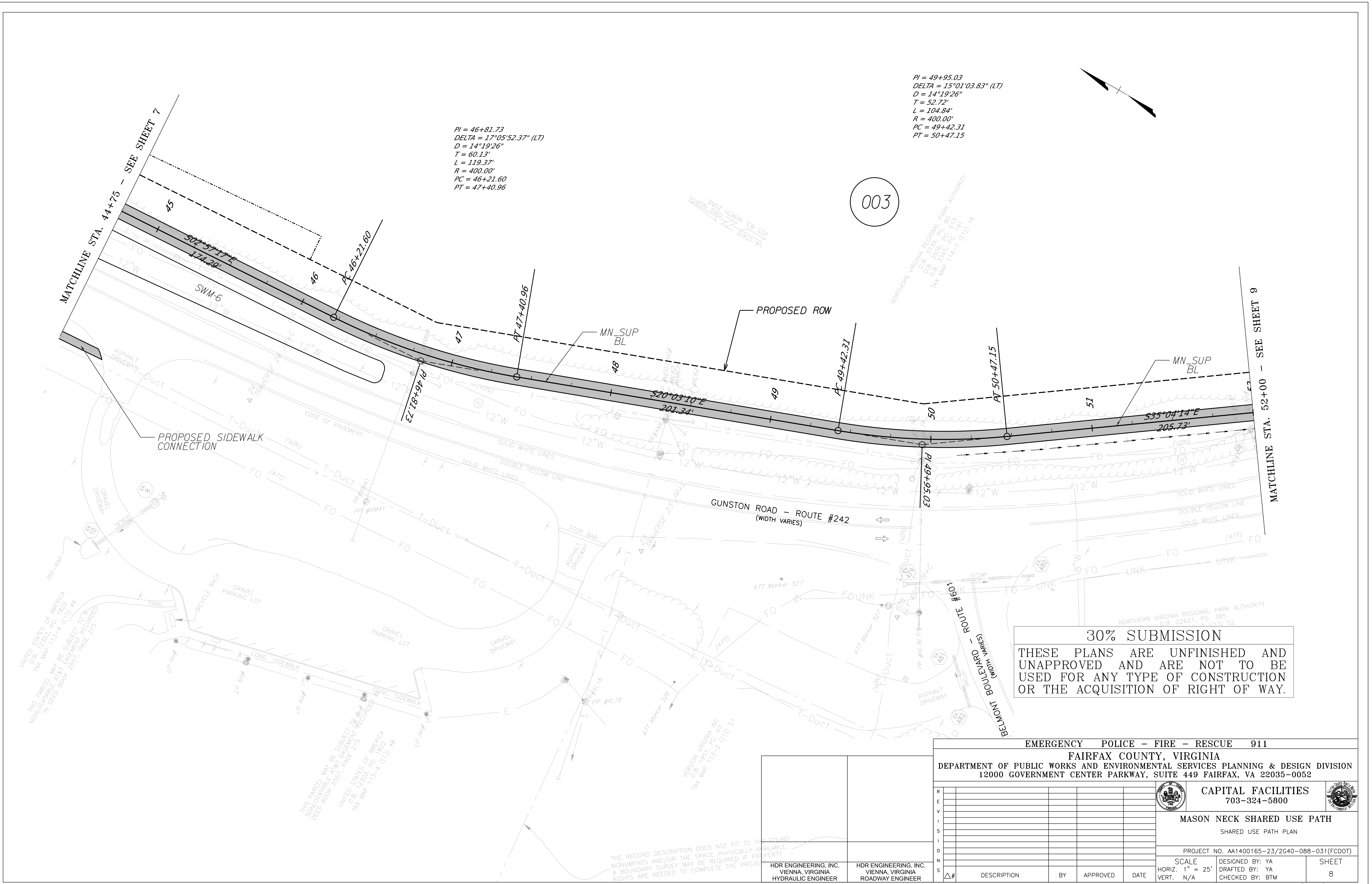
SCALE HORIZ. 1" = 25' VERT. N/A	DESIGNED BY: YA DRAFTED BY: YA CHECKED BY: BTM	SHEET 7
---------------------------------------	--	------------

FUND# 102/500C50000

Plotted By: YAKGARI

File: MNT2G40-088-031_08.dgn

Date: 7/29/2024 12:31:33 PM



$PI = 46+81.73$
 $DELTA = 17^{\circ}05'52.37'' (LT)$
 $D = 14^{\circ}19'26''$
 $T = 60.13'$
 $L = 119.37'$
 $R = 400.00'$
 $PC = 46+21.60$
 $PT = 47+40.96$

$PI = 49+95.03$
 $DELTA = 15^{\circ}01'03.83'' (LT)$
 $D = 14^{\circ}19'26''$
 $T = 52.72'$
 $L = 104.84'$
 $R = 400.00'$
 $PC = 49+42.31$
 $PT = 50+47.15$

003

30% SUBMISSION

THESE PLANS ARE UNFINISHED AND UNAPPROVED AND ARE NOT TO BE USED FOR ANY TYPE OF CONSTRUCTION OR THE ACQUISITION OF RIGHT OF WAY.

UNITED STATES OF AMERICA
 D.B. 12303, P.C. 1822
 TAX MAP 113-4 (11) 48
 THIS PARCEL MAY BE SUBJECT TO A
 NON-LOCABLE AT&T EASEMENT RECORDED
 IN DEED BOOK 2557, PAGE 215

UNITED STATES OF AMERICA
 D.B. 12303, P.C. 1822
 TAX MAP 113-4 (11) 48
 THIS PARCEL MAY BE SUBJECT TO A
 NON-LOCABLE AT&T EASEMENT RECORDED
 IN DEED BOOK 2557, PAGE 215

THE RECORD DESCRIPTION DOES NOT FIT TO THE FOUND
 MONUMENTS AND/OR THE SPACE PHYSICALLY AVAILABLE.
 A BOUNDARY SURVEY MAY BE REQUIRED IF PROPERTY
 RIGHTS ARE NEEDED TO COMPLETE THE PROJECT.

HDR ENGINEERING, INC. VIENNA, VIRGINIA HYDRAULIC ENGINEER	HDR ENGINEERING, INC. VIENNA, VIRGINIA ROADWAY ENGINEER
---	---

EMERGENCY POLICE - FIRE - RESCUE 911
 FAIRFAX COUNTY, VIRGINIA
 DEPARTMENT OF PUBLIC WORKS AND ENVIRONMENTAL SERVICES PLANNING & DESIGN DIVISION
 12000 GOVERNMENT CENTER PARKWAY, SUITE 449 FAIRFAX, VA 22035-0052

R					
E					
V					
I					
S					
I					
O					
N					
S					
Δ#	DESCRIPTION	BY	APPROVED	DATE	

	CAPITAL FACILITIES 703-324-5800	
	MASON NECK SHARED USE PATH SHARED USE PATH PLAN	
PROJECT NO. AA1400165-23/2G40-088-031(FCDOT)		
SCALE HORIZ. 1" = 25' VERT. N/A	DESIGNED BY: YA DRAFTED BY: YA CHECKED BY: BTM	SHEET 8

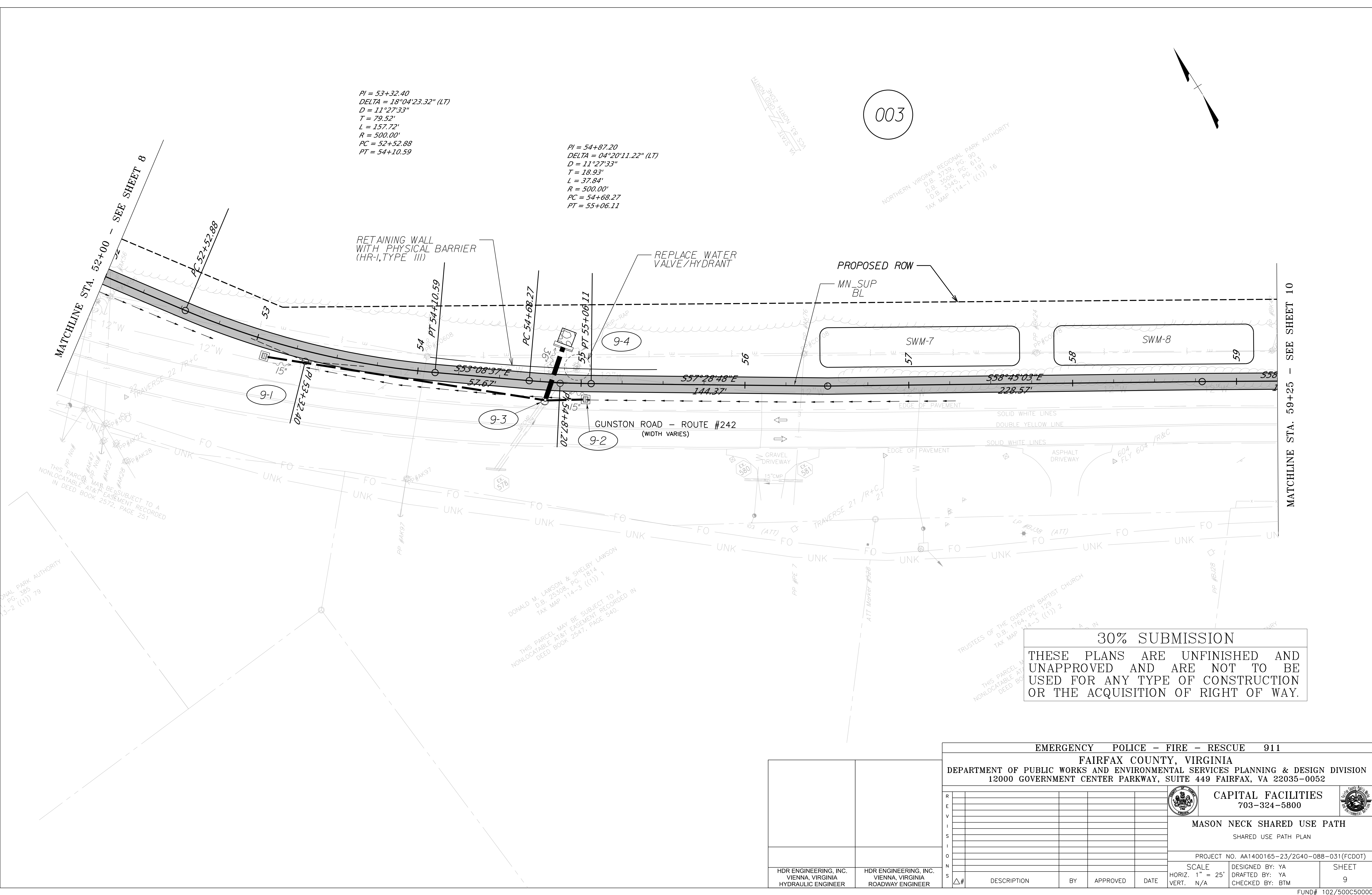
FUND# 102/500C5000

PI = 53+32.40
 DELTA = 18°04'23.32" (LT)
 D = 11°27'33"
 T = 79.52'
 L = 157.72'
 R = 500.00'
 PC = 52+52.88
 PT = 54+10.59

PI = 54+87.20
 DELTA = 04°20'11.22" (LT)
 D = 11°27'33"
 T = 18.93'
 L = 37.84'
 R = 500.00'
 PC = 54+68.27
 PT = 55+06.11

003

NORTHERN VIRGINIA REGIONAL PARK AUTHORITY
 D.B. 3759, PG. 90
 D.B. 3506, PG. 613
 D.B. 3345, PG. 191
 TAX MAP 114-1 ((1)) 16



Date: 7/29/2024 12:32:16 PM
 File: MNT2G40-088-031_09.dgn
 Plotted By: YAKGARI

30% SUBMISSION
 THESE PLANS ARE UNFINISHED AND UNAPPROVED AND ARE NOT TO BE USED FOR ANY TYPE OF CONSTRUCTION OR THE ACQUISITION OF RIGHT OF WAY.

EMERGENCY POLICE - FIRE - RESCUE 911
FAIRFAX COUNTY, VIRGINIA
 DEPARTMENT OF PUBLIC WORKS AND ENVIRONMENTAL SERVICES PLANNING & DESIGN DIVISION
 12000 GOVERNMENT CENTER PARKWAY, SUITE 449 FAIRFAX, VA 22035-0052

CAPITAL FACILITIES
 703-324-5800

MASON NECK SHARED USE PATH
 SHARED USE PATH PLAN

PROJECT NO. AA1400165-23/2G40-088-031(FCDOT)

HDR ENGINEERING, INC.
 VIENNA, VIRGINIA
 HYDRAULIC ENGINEER

HDR ENGINEERING, INC.
 VIENNA, VIRGINIA
 ROADWAY ENGINEER

SCALE	DESIGNED BY: YA	SHEET
HORIZ. 1" = 25'	DRAFTED BY: YA	9
VERT. N/A	CHECKED BY: BTM	

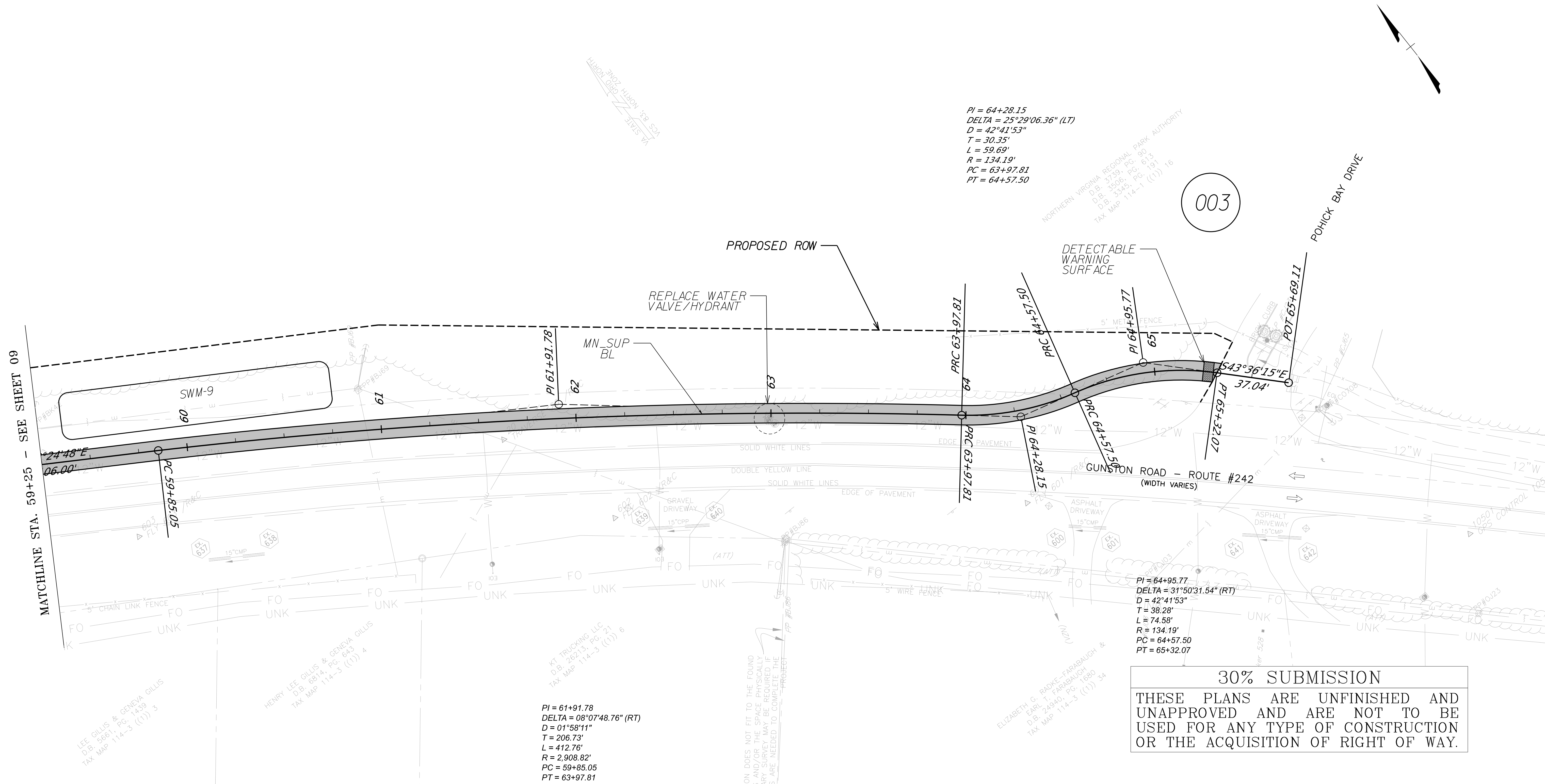
DESCRIPTION	BY	APPROVED	DATE

FUND# 102/500C5000

Plotted By: YAKGARI

File: MNT2G40-088-031_10.dgn

Date: 7/29/2024 12:33:00 PM



30% SUBMISSION
 THESE PLANS ARE UNFINISHED AND UNAPPROVED AND ARE NOT TO BE USED FOR ANY TYPE OF CONSTRUCTION OR THE ACQUISITION OF RIGHT OF WAY.

THE RECORD DESCRIPTION DOES NOT FIT TO THE FOUND MONUMENTS AND SPACE PHYSICALLY AVAILABLE. A BOUNDARY SURVEY SHALL BE REQUIRED IF PROPERTY RIGHTS ARE NEEDED TO COMPLETE THE PROJECT.

EMERGENCY POLICE - FIRE - RESCUE 911
 FAIRFAX COUNTY, VIRGINIA
 DEPARTMENT OF PUBLIC WORKS AND ENVIRONMENTAL SERVICES PLANNING & DESIGN DIVISION
 12000 GOVERNMENT CENTER PARKWAY, SUITE 449 FAIRFAX, VA 22035-0052

CAPITAL FACILITIES 703-324-5800		MASON NECK SHARED USE PATH SHARED USE PATH PLAN	
PROJECT NO. AA1400165-23/2G40-088-031(FCDOT)			
SCALE HORIZ. 1" = 25' VERT. N/A	DESIGNED BY: YA DRAFTED BY: YA CHECKED BY: BTM	SHEET 10	
FUND# 102/500C5000			

HDR ENGINEERING, INC. VIENNA, VIRGINIA ROADWAY ENGINEER	HDR ENGINEERING, INC. VIENNA, VIRGINIA ROADWAY ENGINEER
---	---

R	E	V	I	S	I	O	N
Δ#	DESCRIPTION	BY	APPROVED	DATE			