

INDEX OF SHEETS	
SHEET NO:	DESCRIPTION:
1	TITLE SHEET
1C	SYMBOLS AND ABBREVIATIONS
1D	RIGHT-OF-WAY DATA SHEET
1E(1)-1E(2)	SURVEY AND ALIGNMENT DATA SHEET
2A(1)-2A(4)	TYPICAL SECTIONS
2B	TYPICAL SECTION DETAILS
3	PLAN SHEET - 10+00 TO 15+25
3A	PROFILE SHEET - 10+00 TO 15+25
4	PLAN SHEET - 15+25 TO 22+00
4A	PROFILE SHEET - 15+25 TO 22+00
5	PLAN SHEET - 22+00 TO 29+25
5A	PROFILE SHEET - 22+00 TO 29+25
6	PLAN SHEET - 29+25 TO 36+50
6A	PROFILE SHEET - 29+25 TO 36+50
7	PLAN SHEET - 36+50 TO 43+50
7A	PROFILE SHEET - 36+50 TO 43+50
8	PLAN SHEET - 43+50 TO 49+88
8A	PROFILE SHEET - 43+50 TO 49+88
10(1)	SIGNING & PAVEMENT MARKINGS GENERAL NOTES & LEGEND
10(2)-10(7)	SIGNING & PAVEMENT MARKING PLANS
X-1 thru X-73	CROSS SECTIONS

PROJECT MANAGER: AYAD BAZLAMIT, PE
 SURVEYED BY, DATE: FAIRFAX COUNTY, 10/31/2025
 DATUM: VERTICAL: NGVD29
 HORIZONTAL: VA COORD SYSTEM NORTH ZONE #4501
 UNITS: US SURVEY FOOT
 SUBSURFACE UTILITY BY, DATE: N/A
 DESIGNED BY: WSP USA



FHWA-534-DATA 44028
 UPC 126327

STATE	FEDERAL AID PROJECT	ROUTE	STATE PROJECT	SHEET NO.
VA.	STP-5B01 (***) SEE TABULATION BELOW FOR SECTION NUMBERS	638	(NFO) 0641-029-601 SEE TABULATION BELOW FOR SECTION NUMBERS	1

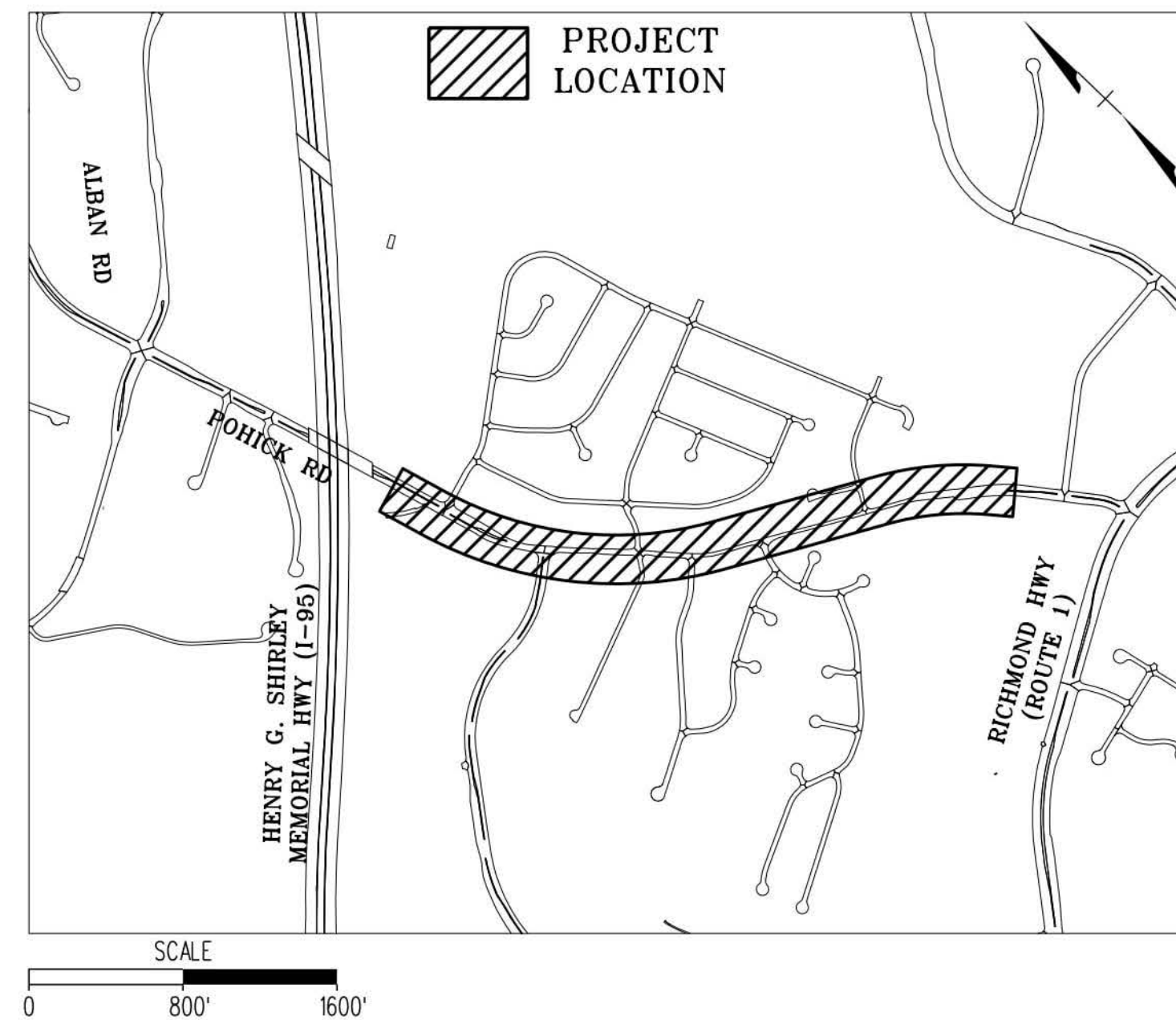
POHICK ROAD (RTE 638) - FUNCTIONAL CLASSIFICATION	
URBAN MINOR ARTERIAL (GS-6) - LEVEL	
FROM: RICHMOND HWY TO: ALBAN RD	
AADT (2024)	12,000
AADT (2046)	12,696
DHV	1,117
D (%) - 2024	59.43%
T (%) - 2024	1%
DESIGN V (mph)	35
POSTED V (mph)	35

A PROGRAMMATIC DESIGN WAIVER HAS BEEN SUBMITTED FOR REVIEW WITH PRELIMINARY PLANS. THIS WAIVER RELATES TO THE REDUCED BUFFER PROVIDED BETWEEN STA. 45+36.38 TO 47+68.17

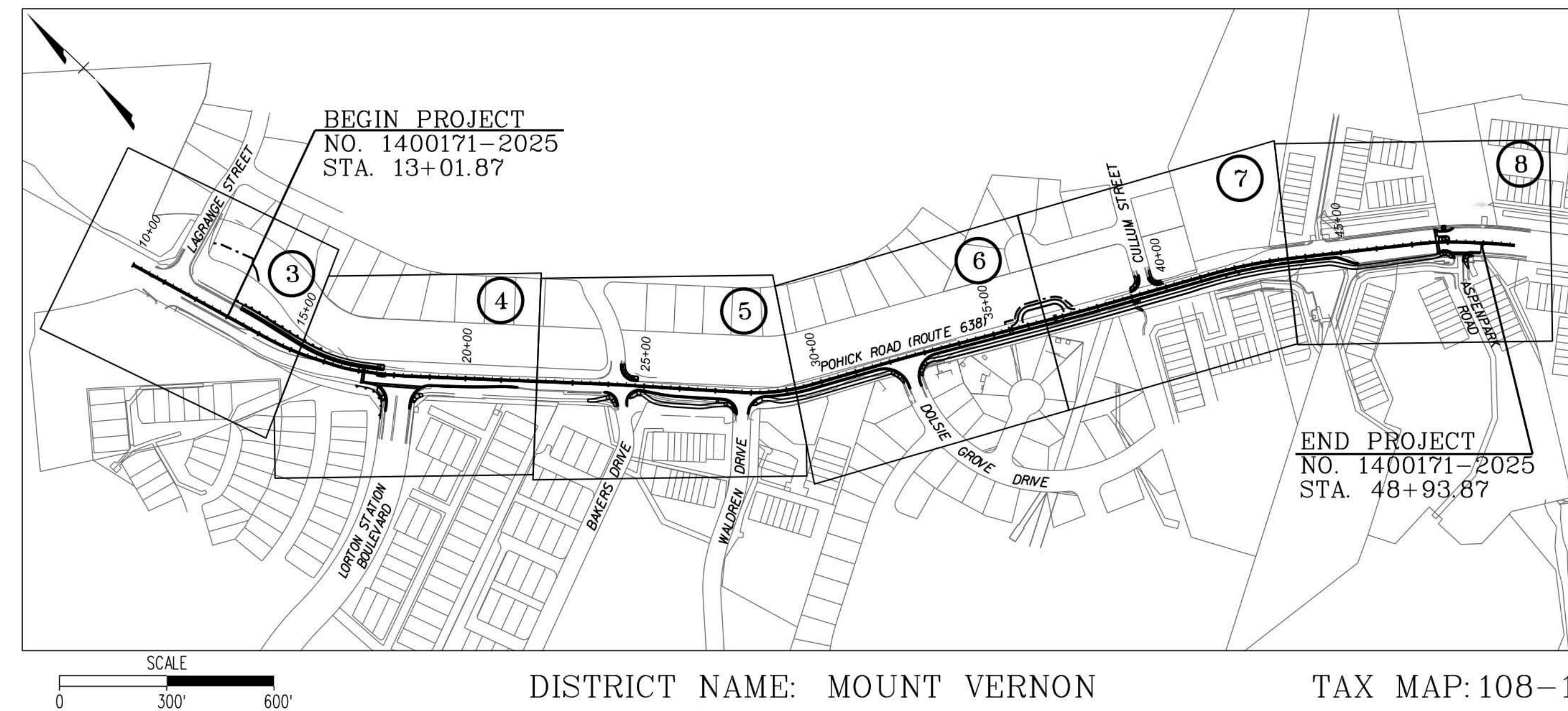
PRELIMINARY PLANS
 FEBRUARY 2026

FAIRFAX COUNTY, VIRGINIA DEPARTMENT OF PUBLIC WORKS AND ENVIRONMENTAL SERVICES PROJECT NO. 1400171-2025 FUND NO. 400-C40010

PROJECT VICINITY MAP



PROJECT LOCATION MAP



MAINTENANCE LEGEND:

- VDOT**
 2,145 LF - ASPHALT SHARED USE PATH
 16 EA - CURB RAMPS
 607 LF - CONCRETE SIDEWALK
 2 EA - PEDESTRIAN REFUGE ISLAND
 1 EA - CULLUM STREET BMP

FAIRFAX COUNTY

- 3 EA - BUS PAD
 5 EA - RRFB
 1 EA - LAGRANGE STREET BMP

POHICK ROAD PEDESTRIAN IMPROVEMENT

Fairfax County Population 1,160,925 (2024 Census)

STATE PROJECT NO.	SECTION	FEDERAL AID PROJECT NO.	TYPE CODE	UPC NO.	EQUALITIES		LENGTH INCLUDING BRIDGE(S)		LENGTH EXCLUDING BRIDGE(S)		BRIDGE PROJECT NO.	TYPE PROJECT	DESCRIPTION
					FEET	MILES	FEET	MILES	FEET	MILES			
0641-029-601	P101	STP-5B01 (666)	PENG	126327			3586	0.68	3586	0.68		PREL. ENG	
	R201	STP-5B01 (667)	ROWA	126327			3838	0.73	3838	0.73		R/W	
	C501	STP-5B01 (668)	CENG	126327			3586	0.68	3586	0.68		CONSTRUCTION	

Project lengths are based on the Pohick Road construction baseline.

DESIGN FEATURES RELATING TO CONSTRUCTION OR TO REGULATION AND CONTROL OF TRAFFIC MAY BE SUBJECT TO CHANGE AS DEEMED NECESSARY BY THE VIRGINIA DEPARTMENT OF TRANSPORTATION.

THIS PROJECT IS TO BE CONSTRUCTED IN ACCORDANCE WITH:

VDOT ROAD AND BRIDGE SPECIFICATIONS, DATED 2020 AND 2022 SUPPLEMENT
 VDOT ROAD AND BRIDGE STANDARDS, DATED 2016, REVISED JUNE 2025
 VIRGINIA MUTCD, V 11.0 - JANUARY 2026
 VIRGINIA WORK AREA PROTECTION MANUAL, V 11.0 - JANUARY 2026

AND AS AMENDED BY CONTRACT PROVISIONS AND THESE PLANS.

FINAL PLANS AUTHORIZED FOR CONSTRUCTION
 PER DPWES/DOT DELEGATION MATRIX

DIRECTOR, UTILITIES DESIGN & CONSTRUCTION DIVISION	DATE
CHIEF, TRANSPORTATION DESIGN DIVISION	DATE
DEPUTY DIRECTOR, DEPARTMENT OF PUBLIC WORKS & ENVIRONMENTAL SERVICES - CAPITAL FACILITIES	DATE

SHEET
 1

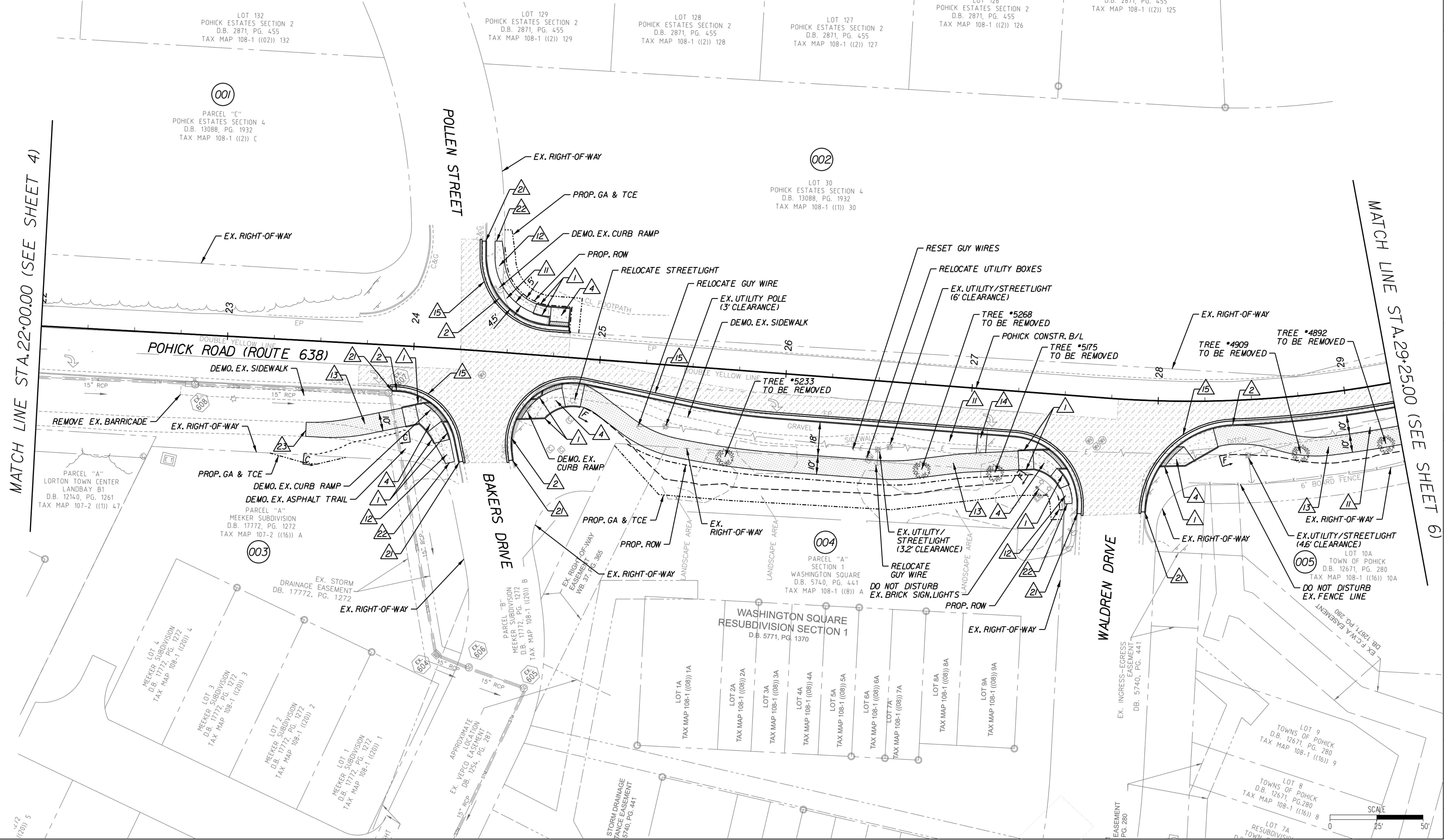
PROJECT NO. 1400171-2025
 POHICK ROAD PEDESTRIAN IMPROVEMENT

LEGEND			
	PROP. MILL & OVERLAY		PROP. HEADER CURB STD. CG-2
	PROP. FULL-DEPTH PAVEMENT		PROP. CURB & GUTTER STD. CG-6, UD-4
	PROP. CONCRETE PAVEMENT		PROP. CG-12 REFUGE ISLAND
	CONSTRUCTION LIMITS IN FILL		PROP. CURB RAMP STD. CG-12 TYPE B
	CONSTRUCTION LIMITS IN CUT		PROP. GUARDRAIL STD. MGS1
	PROP. RIGHT-OF-WAY (ROW)		PROP. END TERMINAL STD. MGS2
	PROP. GRADING AGREEMENT & TEMPORARY CONSRT. ESMT (GA & TCE)		PROP. GUARDRAIL TRANSITION STD. MGS4
	PROP. V-DITCH		PROP. BUFFER
	LOT ID		PROP. CONCRETE SIDEWALK
			PROP. SHARED USE PATH
			PROP. BUS PAD
			PROP. FULL DEPTH SAWCUT
			PROP. PEDESTRIAN SIGNAL ASSEMBLY
			TIE TO EX. CURB AND GUTTER
			TIE TO EX. CONCRETE SIDEWALK
			TIE TO EX. ASPHALT TRAIL
			TIE TO EX. GUARDRAIL

GRID NORTH
VCS 83: NORTH ZONE
NGVD 29

MATCH LINE STA. 22+00.00 (SEE SHEET 4)

MATCH LINE STA. 29+25.00 (SEE SHEET 6)



EMERGENCY POLICE - FIRE - RESCUE 911

**POHICK ROAD
PEDESTRIAN IMPROVEMENT**

PROJECT NO. 1400171-2025
FUND# 400-C40010

FAIRFAX COUNTY, VIRGINIA
DEPARTMENT OF PUBLIC WORKS
AND ENVIRONMENTAL SERVICES

CAPITAL FACILITIES

PLANNING AND DESIGN DIVISION
12000 GOVERNMENT CENTER PKY., SUITE 449
FAIRFAX, VIRGINIA 22030-0052
703-324-6800

NO.	DESCRIPTION	BY	APPROVED	DATE

APPROVED BY THE PLANNING AND DESIGN DIVISION

PLAN SHEET
STA. 22+00 TO STA. 29+25

DESIGNED BY: N.T.T
DRAFTED BY: N.T.T
CHECKED BY: M.J.A

SCALE
HORIZ. 1"= 25'
VERT. 1"= N/A

SHEET
5

