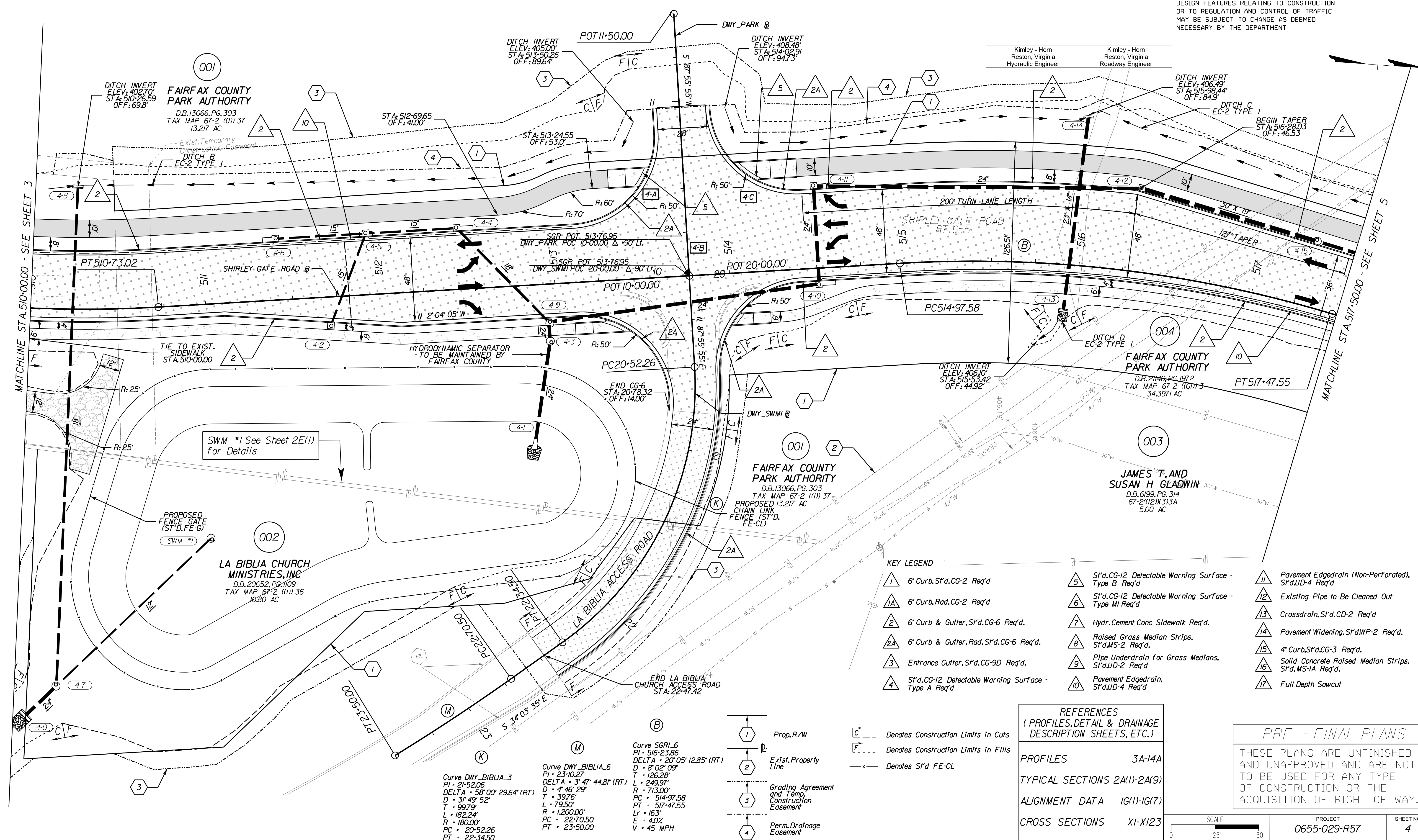


REVISED	STATE	ROUTE	STATE	PROJECT	SHEET NO.
	VA.	655		0655-029-R57	4

DESIGN FEATURES RELATING TO CONSTRUCTION OR TO REGULATION AND CONTROL OF TRAFFIC MAY BE SUBJECT TO CHANGE AS DEEMED NECESSARY BY THE DEPARTMENT

Kimley - Horn
Reston, Virginia
Hydraulic Engineer

Kimley - Horn
Reston, Virginia
Roadway Engineer



KEY LEGEND

1	6" Curb, S'd, CG-2 Req'd	5	S'd, CG-12 Detectable Warning Surface - Type B Req'd	11	Pavement Edgedrain (Non-Perforated), S'd, IUD-4 Req'd
1A	6" Curb, Rad, CG-2 Req'd	6	S'd, CG-12 Detectable Warning Surface - Type MI Req'd	12	Existing Pipe to Be Cleaned Out
2	6" Curb & Gutter, S'd, CG-6 Req'd.	7	Hydr. Cement Conc Sidewalk Req'd.	13	Crossdrain, S'd, CD-2 Req'd
2A	6" Curb & Gutter, Rad, S'd, CG-6 Req'd.	8	Raised Grass Median Strips, S'd, MS-2 Req'd.	14	Pavement Widening, S'd, WP-2 Req'd.
3	Entrance Gutter, S'd, CG-9D Req'd.	9	Pipe Underdrain for Grass Medians, S'd, IUD-2 Req'd.	15	4" Curb, S'd, CG-3 Req'd.
4	S'd, CG-12 Detectable Warning Surface - Type A Req'd	10	Pavement Edgedrain, S'd, IUD-4 Req'd	16	Solid Concrete Raised Median Strips, S'd, MS-1A Req'd.
				17	Full Depth Sawcut

REFERENCES
(PROFILES, DETAIL & DRAINAGE DESCRIPTION SHEETS, ETC.)

PROFILES 3A-14A
 TYPICAL SECTIONS 2A(1)-2A(9)
 ALIGNMENT DATA 1G(1)-1G(7)
 CROSS SECTIONS XI-X123

PRE - FINAL PLANS

THESE PLANS ARE UNFINISHED AND UNAPPROVED AND ARE NOT TO BE USED FOR ANY TYPE OF CONSTRUCTION OR THE ACQUISITION OF RIGHT OF WAY.

SCALE 0 25' 50'	PROJECT 0655-029-R57	SHEET NO. 4
--------------------	-------------------------	----------------

Curve DMY_BIBLIA_3
 PI • 21-52.06
 DELTA • 58° 00' 29.64" (RT)
 D • 31' 49" 52"
 T • 99.79'
 L • 182.24'
 R • 180.00'
 PC • 20-52.26
 PT • 22-34.50

Curve DMY_BIBLIA_6
 PI • 23-10.27
 DELTA • 3° 47' 44.8" (RT)
 D • 4' 46" 29"
 T • 39.76'
 L • 79.50'
 R • 1200.00'
 PC • 22-70.50
 PT • 23-50.00

Curve SGR1_6
 PI • 516-23.86
 DELTA • 20° 05' 12.85" (RT)
 D • 8' 02" 09"
 T • 126.28'
 L • 249.97'
 R • 713.00'
 PC • 514-97.58
 PT • 517-47.55
 Lr • 163'
 E • 4.0%
 V • 45 MPH

MATCHLINE STA. 510-00.00 - SEE SHEET 3

MATCHLINE STA. 517-50.00 - SEE SHEET 5