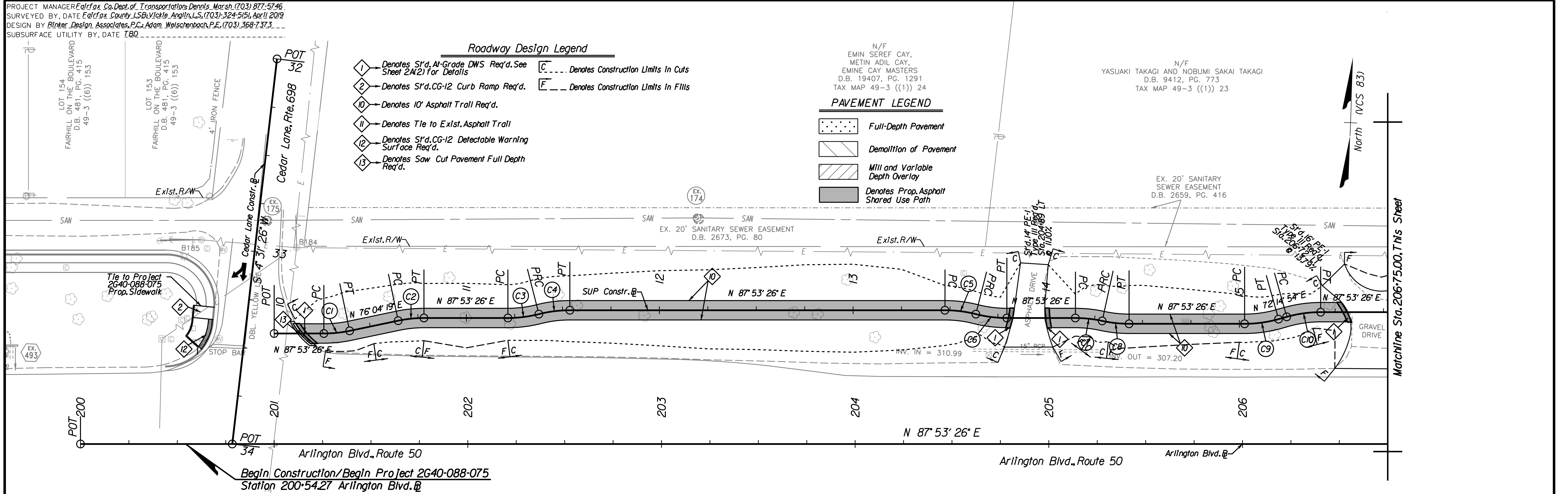


PROJECT MANAGER *Fairfax Co. Dept. of Transportation, Dennis Marsh (703) 877-5746*  
SURVEYED BY, DATE *Fairfax County LSB, Vickie Anglin, L.S. (703) 324-5151, April 11, 2019*  
DESIGN BY *Rinker Design Associates, P.C., Adam Welschenbach, P.E. (703) 368-7373*  
SUBSURFACE UTILITY BY, DATE *TBO*

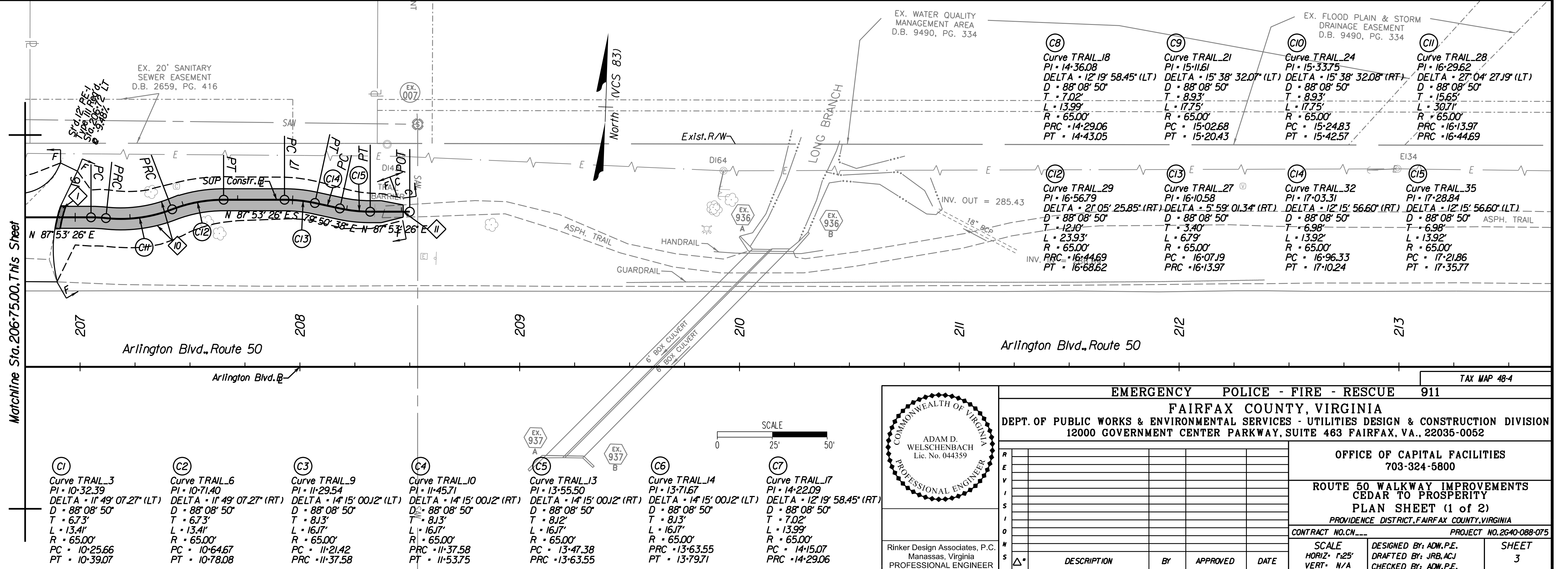
- ### Roadway Design Legend
- 1 Denotes *S'd, At-Grade DWS Req'd. See Sheet 2A(2) for Details*
  - 2 Denotes *S'd, CG-12 Curb Ramp Req'd.*
  - 10 Denotes *10' Asphalt Trall Req'd.*
  - 11 Denotes *Tie to Exist. Asphalt Trail*
  - 12 Denotes *S'd, CG-12 Detectable Warning Surface Req'd.*
  - 13 Denotes *Saw Cut Pavement Full Depth Req'd.*
  - Denotes *Construction Limits in Cuts*
  - - - Denotes *Construction Limits in Fills*

- ### PAVEMENT LEGEND
- Full-Depth Pavement
  - Demolition of Pavement
  - Mill and Variable Depth Overlay
  - Denotes Prop. Asphalt Shared Use Path

N/F  
YASUAKI TAKAGI AND NOBUMI SAKAI TAKAGI  
D.B. 9412, PG. 773  
TAX MAP 49-3 ((1)) 23



Begin Construction/Begin Project 2640-088-075  
Station 200+54.27 Arlington Blvd.



- | Curve   | Trail  | Trail  | Trail   |
|---|--|--|---|
| (C8)  | (C9)   | (C10)  | (C11)   |
| Curve TRAIL_18<br>PI - 14-36.08<br>DELTA - 12° 19' 58.45" (LT)<br>D - 88' 08" 50"<br>T - 7.02'<br>L - 13.99'<br>R - 65.00'<br>PC - 14-29.06<br>PT - 14-43.05  | Curve TRAIL_21<br>PI - 15-11.61<br>DELTA - 15° 38' 32.07" (LT)<br>D - 88' 08" 50"<br>T - 8.93'<br>L - 17.75'<br>R - 65.00'<br>PC - 15-02.68<br>PT - 15-20.43 | Curve TRAIL_24<br>PI - 15-33.75<br>DELTA - 15° 38' 32.08" (RT)<br>D - 88' 08" 50"<br>T - 8.93'<br>L - 17.75'<br>R - 65.00'<br>PC - 15-24.83<br>PT - 15-42.57 | Curve TRAIL_28<br>PI - 16-29.62<br>DELTA - 27° 04' 27.19" (LT)<br>D - 88' 08" 50"<br>T - 15.65'<br>L - 30.71'<br>R - 65.00'<br>PC - 16-13.97<br>PT - 16-44.69 |
| (C12)   | (C13)  | (C14)  | (C15)   |
| Curve TRAIL_29<br>PI - 16-56.79<br>DELTA - 21° 05' 25.85" (RT)<br>D - 88' 08" 50"<br>T - 12.10'<br>L - 23.93'<br>R - 65.00'<br>PC - 16-44.69<br>PT - 16-68.62 | Curve TRAIL_27<br>PI - 16-10.58<br>DELTA - 5° 59' 01.34" (RT)<br>D - 88' 08" 50"<br>T - 3.40'<br>L - 6.79'<br>R - 65.00'<br>PC - 16-07.19<br>PT - 16-13.97   | Curve TRAIL_32<br>PI - 17-03.31<br>DELTA - 12° 15' 56.60" (RT)<br>D - 88' 08" 50"<br>T - 6.98'<br>L - 13.92'<br>R - 65.00'<br>PC - 16-96.33<br>PT - 17-10.24 | Curve TRAIL_35<br>PI - 17-28.84<br>DELTA - 12° 15' 56.60" (LT)<br>D - 88' 08" 50"<br>T - 6.98'<br>L - 13.92'<br>R - 65.00'<br>PC - 17-21.86<br>PT - 17-35.77  |

- | Curve   | Trail   | Trail   | Trail  | Trail  | Trail  | Trail  |
|---|---|---|--|--|--|--|
| (C1)  | (C2)  | (C3)  | (C4)   | (C5)   | (C6)   | (C7)   |
| Curve TRAIL_3<br>PI - 10-32.39<br>DELTA - 11° 49' 07.27" (LT)<br>D - 88' 08" 50"<br>T - 6.73'<br>L - 13.41'<br>R - 65.00'<br>PC - 10-25.66<br>PT - 10-39.07 | Curve TRAIL_6<br>PI - 10-71.40<br>DELTA - 11° 49' 07.27" (RT)<br>D - 88' 08" 50"<br>T - 6.73'<br>L - 13.41'<br>R - 65.00'<br>PC - 10-64.67<br>PT - 10-78.08 | Curve TRAIL_9<br>PI - 11-29.54<br>DELTA - 14° 15' 00.12" (LT)<br>D - 88' 08" 50"<br>T - 8.13'<br>L - 16.17'<br>R - 65.00'<br>PC - 11-21.42<br>PT - 11-37.58 | Curve TRAIL_10<br>PI - 11-45.71<br>DELTA - 14° 15' 00.12" (RT)<br>D - 88' 08" 50"<br>T - 8.13'<br>L - 16.17'<br>R - 65.00'<br>PC - 11-37.58<br>PT - 11-53.75 | Curve TRAIL_13<br>PI - 13-55.50<br>DELTA - 14° 15' 00.12" (RT)<br>D - 88' 08" 50"<br>T - 8.12'<br>L - 16.17'<br>R - 65.00'<br>PC - 13-47.38<br>PT - 13-63.55 | Curve TRAIL_14<br>PI - 13-71.67<br>DELTA - 14° 15' 00.12" (LT)<br>D - 88' 08" 50"<br>T - 8.13'<br>L - 16.17'<br>R - 65.00'<br>PC - 13-63.55<br>PT - 13-79.71 | Curve TRAIL_17<br>PI - 14-22.09<br>DELTA - 12° 19' 58.45" (RT)<br>D - 88' 08" 50"<br>T - 7.02'<br>L - 13.99'<br>R - 65.00'<br>PC - 14-15.07<br>PT - 14-29.06 |

COMMONWEALTH OF VIRGINIA  
ADAM D. WELSCHENBACH  
Lic. No. 044339  
PROFESSIONAL ENGINEER

EMERGENCY POLICE - FIRE - RESCUE 911			
FAIRFAX COUNTY, VIRGINIA			
DEPT. OF PUBLIC WORKS & ENVIRONMENTAL SERVICES - UTILITIES DESIGN & CONSTRUCTION DIVISION			
12000 GOVERNMENT CENTER PARKWAY, SUITE 463 FAIRFAX, VA., 22035-0052			
OFFICE OF CAPITAL FACILITIES 703-324-5800		ROUTE 50 WALKWAY IMPROVEMENTS CEDAR TO PROSPERITY PLAN SHEET (1 of 2) PROVIDENCE DISTRICT, FAIRFAX COUNTY, VIRGINIA	
CONTRACT NO. CN-2019-001		PROJECT NO. 2640-088-075	
SCALE HORIZ - 1"=25' VERT - N/A		DESIGNED BY: ADM, P.E. DRAFTED BY: JRB, ACJ CHECKED BY: ADM, P.E.	SHEET 3
DESCRIPTION	BY	APPROVED	DATE

THESE PLANS ARE UNFINISHED AND UNAPPROVED AND ARE NOT TO BE USED FOR ANY TYPE OF CONSTRUCTION OR THE ACQUISITION OF RIGHT OF WAY.

PROJECT MANAGER: Fairfax Co. Dept. of Transportation, Dennis Marsh (703) 877-5746  
SURVEYED BY, DATE: Fairfax County, LSB, Vickie Anglin, L.S., (703) 324-5151, April 11, 2019  
DESIGN BY: Rinker Design Associates, P.C., Adam Welschenbach, P.E., (703) 368-7373  
SUBSURFACE UTILITY BY, DATE: TBD

PARCEL "A"  
THE RETREAT AT SYCAMORE RIDGE  
D.B. 9490, PG. 334  
TAX MAP 49-3 ((30)) A

PARCEL "A"  
THE RETREAT AT SYCAMORE RIDGE  
D.B. 9490, PG. 334  
TAX MAP 49-3 ((30)) A

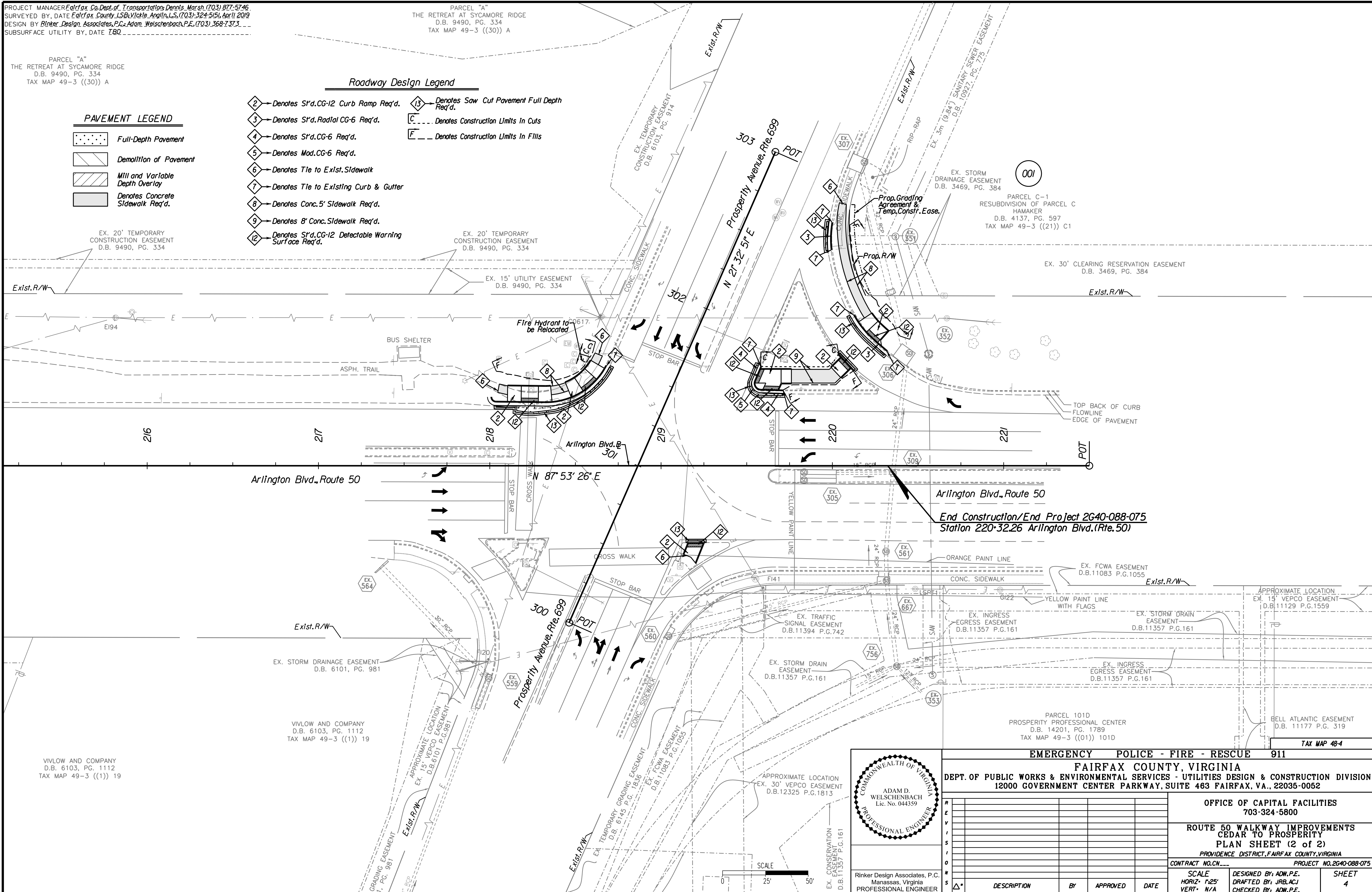
### Roadway Design Legend

- ② Denotes St'd. CG-12 Curb Ramp Req'd.
- ③ Denotes Saw Cut Pavement Full Depth Req'd.
- ④ Denotes St'd. Radial CG-6 Req'd.
- ⑤ Denotes Mod. CG-6 Req'd.
- ⑥ Denotes Tie to Exist. Sidewalk
- ⑦ Denotes Tie to Existing Curb & Gutter
- ⑧ Denotes Conc. 5' Sidewalk Req'd.
- ⑨ Denotes 8' Conc. Sidewalk Req'd.
- ⑩ Denotes St'd. CG-12 Detectable Warning Surface Req'd.
- ⑪ Denotes Construction Limits In Cuts
- ⑫ Denotes Construction Limits In Fills

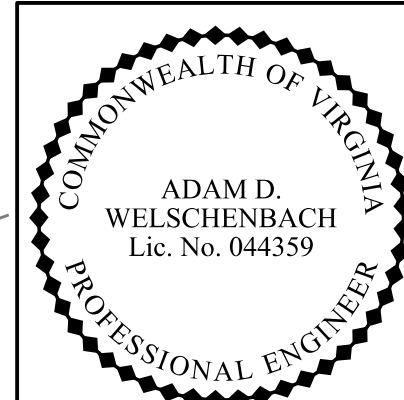
### PAVEMENT LEGEND

- Full-Depth Pavement
- Demolition of Pavement
- Mill and Variable Depth Overlay
- Denotes Concrete Sidewalk Req'd.

Office Locations  
Rinker Design Associates, P.C.  
Civil Engineering, Transportation, Environmental  
Right of Way Services



End Construction/End Project 2G40-088-075  
Station 220+32.26 Arlington Blvd. (Rte. 50)



Rinker Design Associates, P.C.  
Manassas, Virginia  
PROFESSIONAL ENGINEER

<b>EMERGENCY POLICE - FIRE - RESCUE 911</b>			
<b>FAIRFAX COUNTY, VIRGINIA</b>			
DEPT. OF PUBLIC WORKS & ENVIRONMENTAL SERVICES - UTILITIES DESIGN & CONSTRUCTION DIVISION 12000 GOVERNMENT CENTER PARKWAY, SUITE 463 FAIRFAX, VA., 22035-0052			
OFFICE OF CAPITAL FACILITIES 703-324-5800		ROUTE 50 WALKWAY IMPROVEMENTS CEDAR TO PROSPERITY PLAN SHEET (2 of 2) PROVIDENCE DISTRICT, FAIRFAX COUNTY, VIRGINIA	
CONTRACT NO. CN-...		PROJECT NO. 2G40-088-075	
SCALE	DESIGNED BY: ADW, P.E.	SHEET	
HORIZ: 1"=25'	DRAFTED BY: JRB, ACJ	4	
VERT: N/A	CHECKED BY: ADW, P.E.		
DESCRIPTION	BY	APPROVED	DATE

THESE PLANS ARE UNFINISHED AND UNAPPROVED AND ARE NOT TO BE USED FOR ANY TYPE OF CONSTRUCTION OR THE ACQUISITION OF RIGHT OF WAY.