

Lee Chapel Road Community Information Meeting

FCDOT and Springfield District Supervisor
Fairfax County Department of Transportation

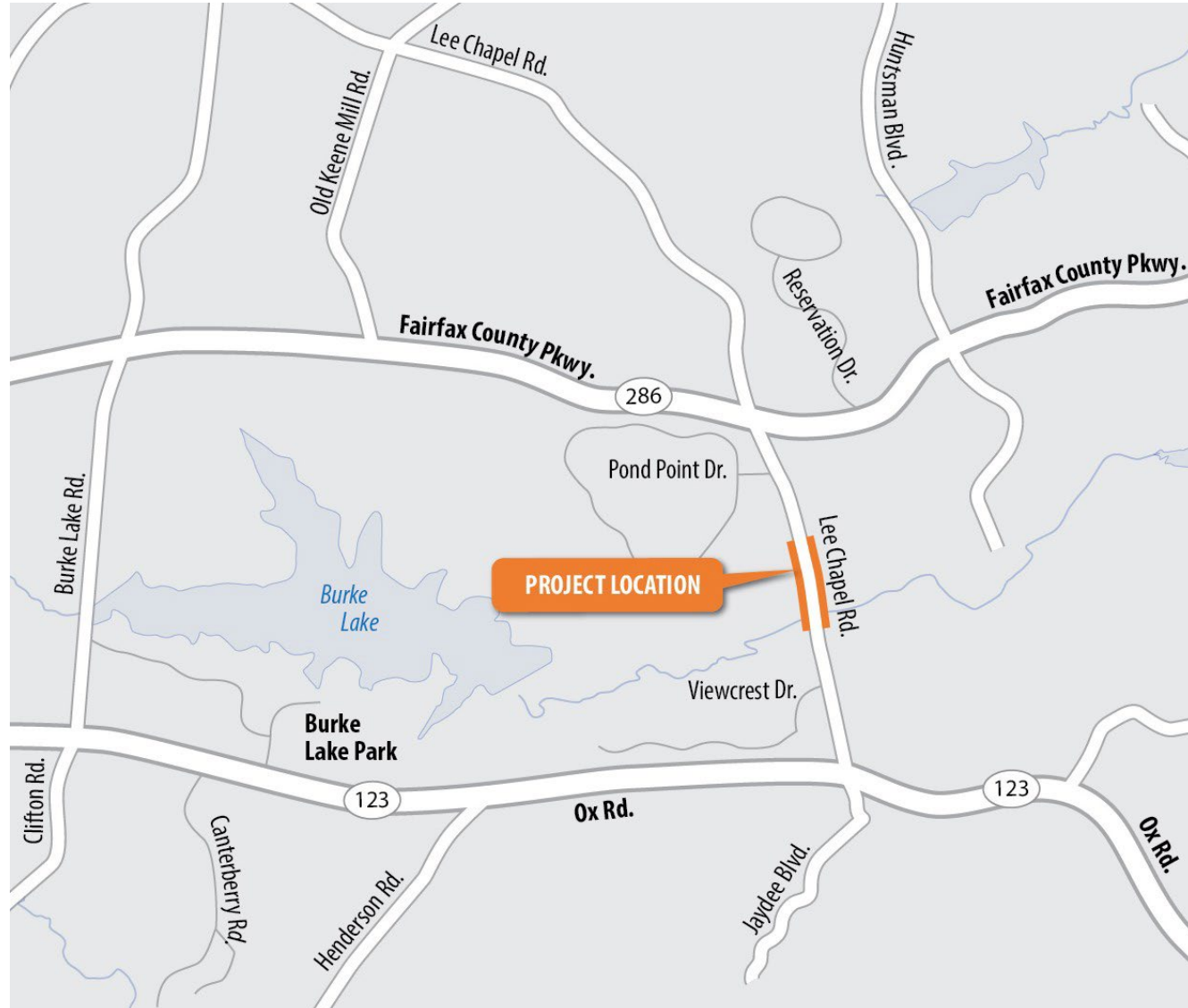
June 11, 2026

Agenda

- Opening Statement by Pat Herrity, Supervisor, Springfield District
- Project Team Introduction
- Project Overview
- Roadway Design – Horizontal and Vertical
- Maintenance of Traffic (MOT)
- Detour Options
- Utilities
- Environmental Analyses
- Project Cost and Schedule
- Public Feedback Submission Instructions
- Questions and Answers

Project Location Map

Springfield District



Project Overview

- This safety improvement project will bring approximately an 1,800-foot segment of Lee Chapel Road to current design standards by:
 - correcting substandard vertical curves,
 - improving sight distance, and
 - realigning the roadway.
- A town hall meeting was held on September 13, 2023.
- Survey was completed in December 2023.
- Traffic study was conducted for maintenance of traffic (MOT) options March – August 2024.
- A community public information meeting held on December 10, 2024.

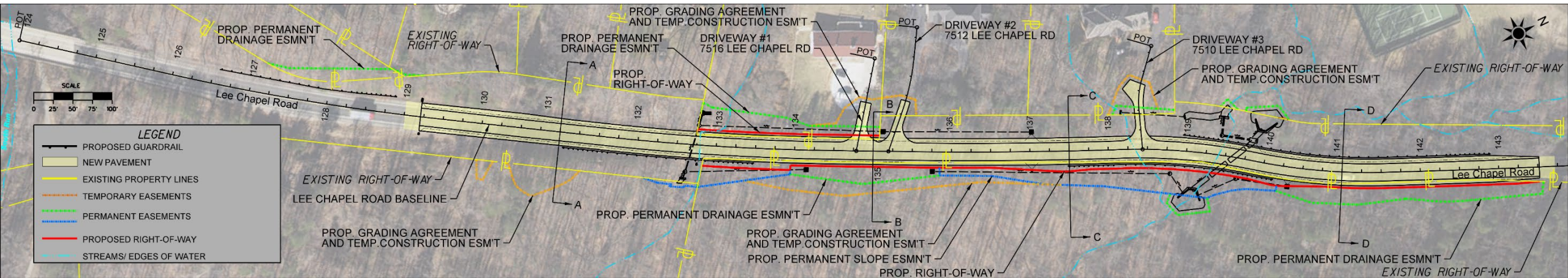
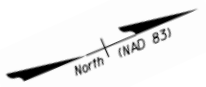
Completed Work Since Last Community Meeting

- Based on the traffic study and public survey data, road closed option was selected
Community survey result
 - a. Road closed option- 82.04%
 - b. Road partially open- 17.96%
- Initial environmental work and wetland delineations
- Phase I archeological and cultural resources survey
- Threatened and endangered species survey
- Geotechnical investigation
- Intermediate (60%) Plan completed and submitted to VDOT and Fairfax County agencies for review in November 2025

In Progress Since Last Community Meeting

- 90% Design Plan
- Utility coordination
- Detailed tree condition assessment survey
- Phase II archeological cultural resources survey
- National Environmental Policy Act (NEPA) documentation
- Section 6(f) documentation for Parkland Conversion
- Continue coordination with Fairfax County Park Authority (FPCA) and VDOT regarding land swap

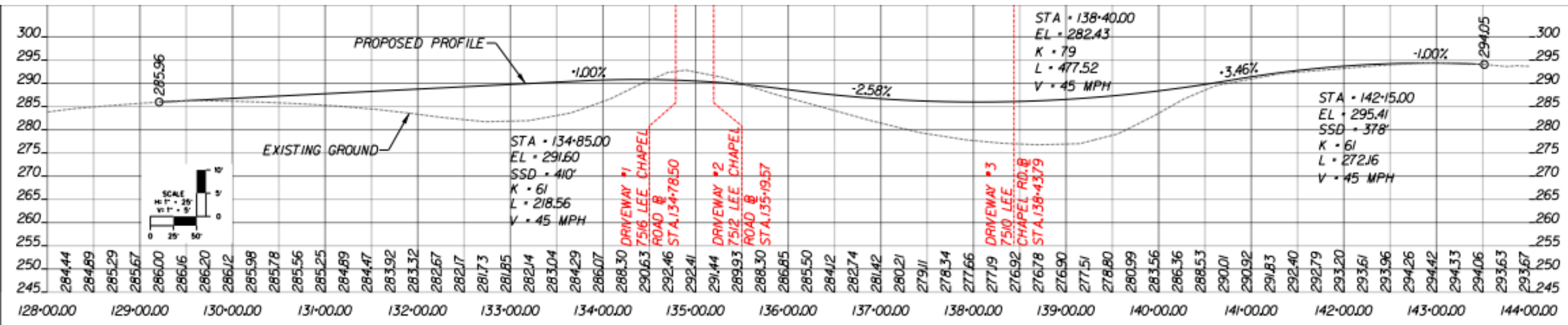
Proposed Roadway Design



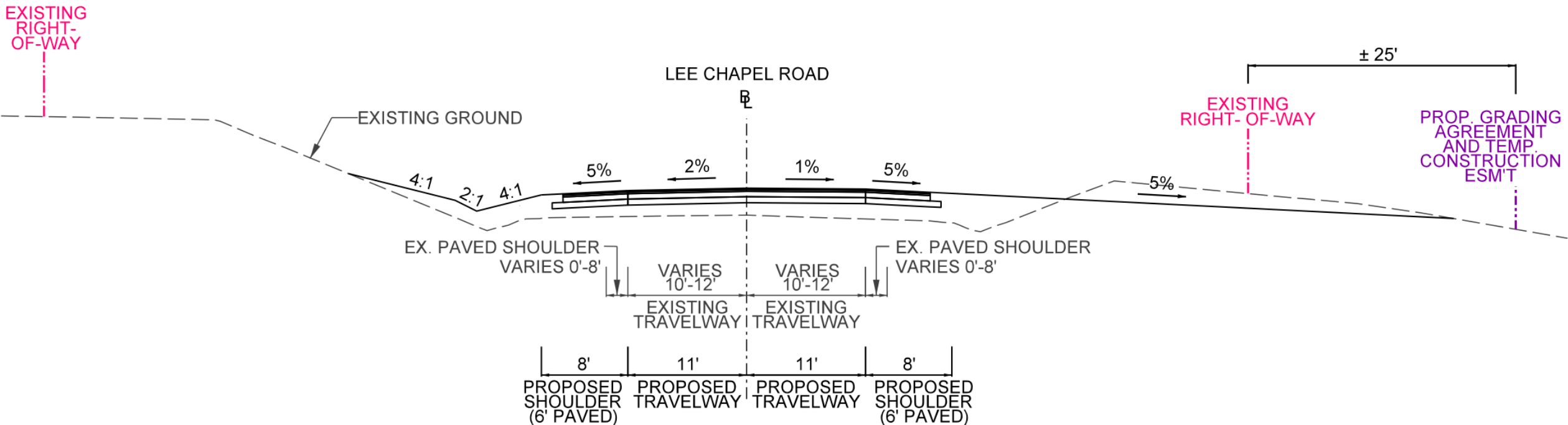
Notes:

- Proposed Right-of-Way and Easements subject to change in coordination with VDOT and Park Authority
- Horizontal Alignment is approximately in the same location as the existing centerline

Proposed Roadway Profile

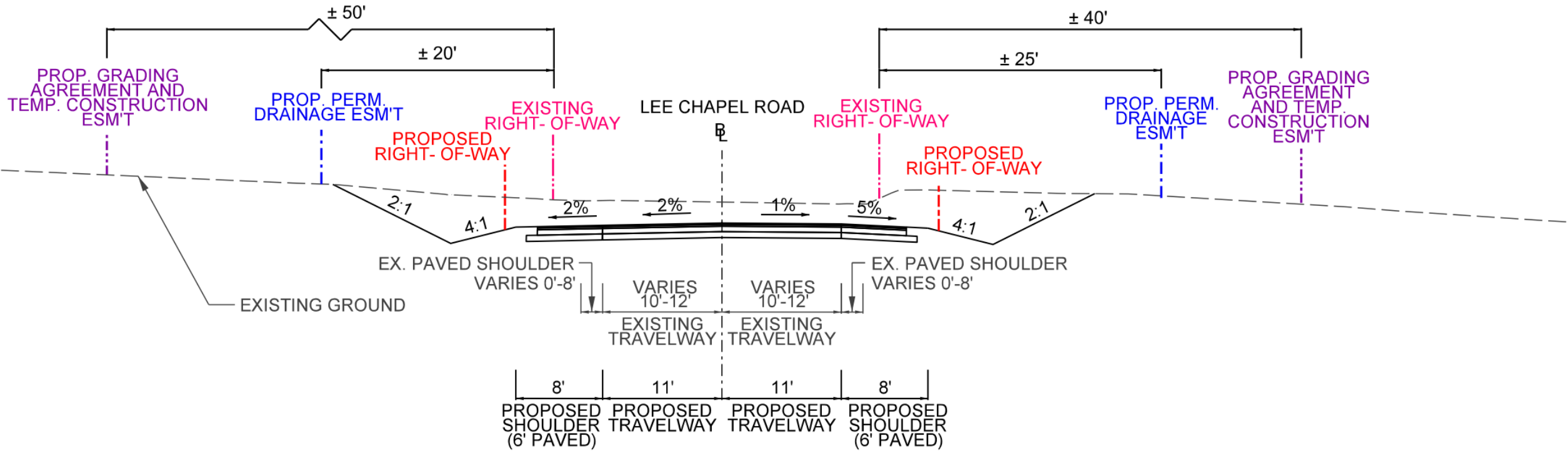


Typical Section A - A



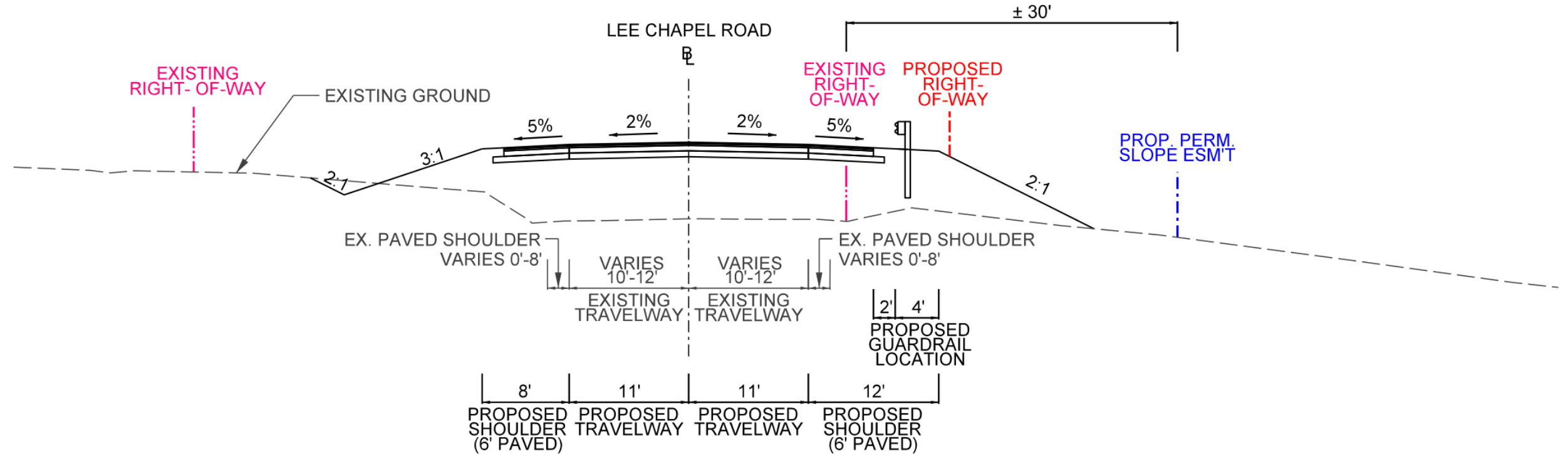
- Approximately from Station 129+00 to 134+00 (near the beginning (south end) of the project)
- Proposed Right-of-Way and Easements subject to change in coordination with VDOT and Park Authority

Typical Section B - B



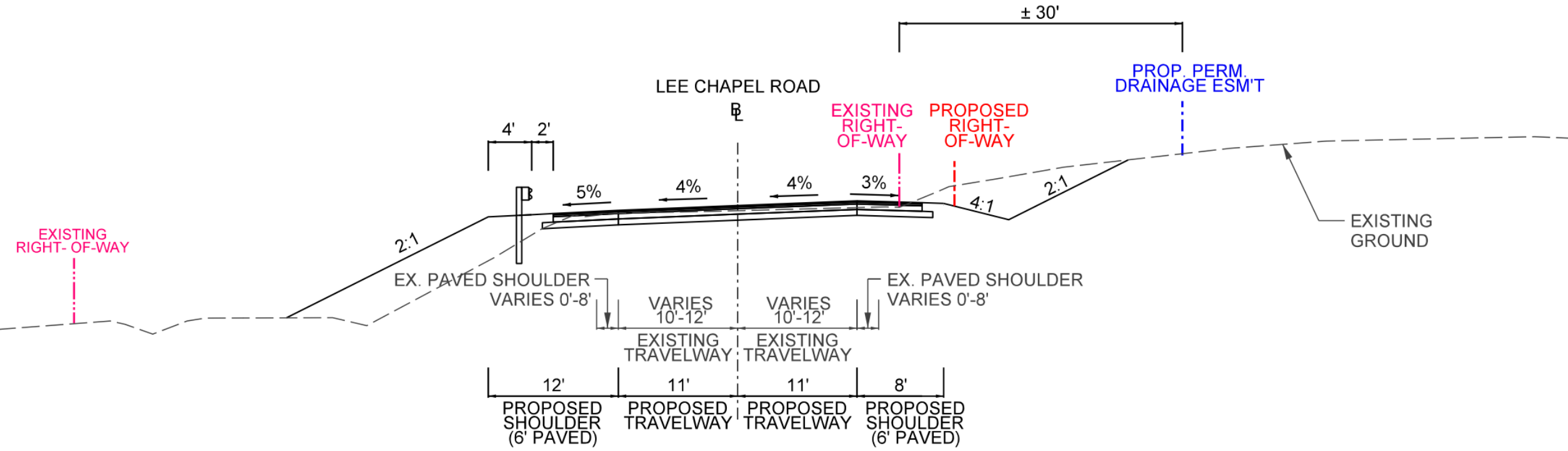
- Approximately from Station 134+00 to 136+50 (at the cut location close to driveways 1 & 2)
- Proposed Right-of-Way and Easements subject to change in coordination with VDOT and Park Authority

Typical Section C - C



- Approximately from Station 136+50 to 139+00 (at the fill location close to driveway 3)
- Proposed Right-of-Way and Easements subject to change in coordination with VDOT and Park Authority

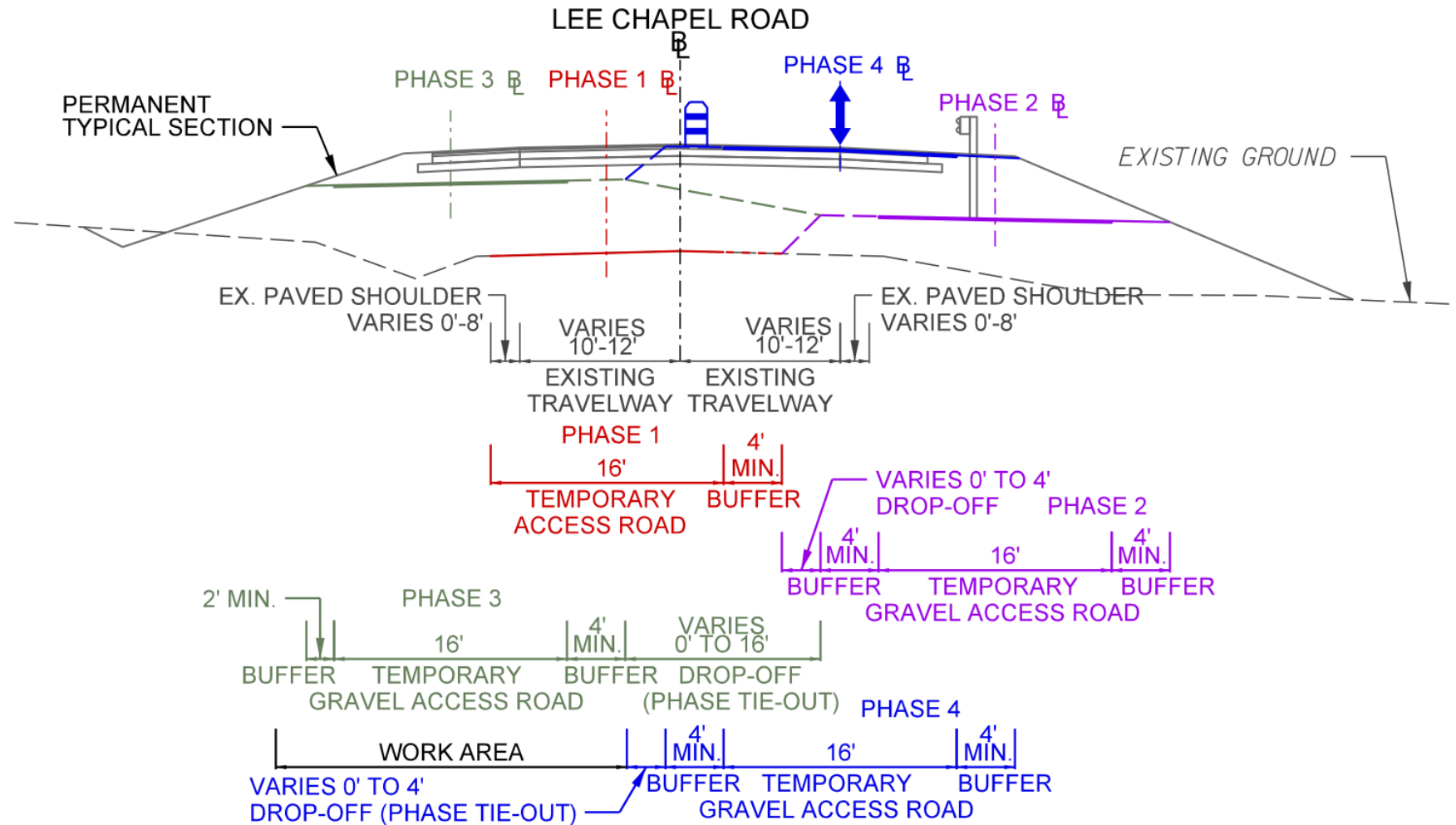
Typical Section D - D



- Approximately from Station 139+00 to 143+50 (Close to the end limit (north end) of the project)
- Proposed Right-of-Way and Easements subject to change in coordination with VDOT and Park Authority

Maintenance of Traffic (MOT) – Road Closed/Local Access Temporary Gravel Roadway

Typical Section – Road Closed/Local Access Temporary Gravel Road



Maintenance of Traffic (MOT) – Detours

MOT – Road Closed/Local Access Temporary Gravel Roadway

LEGEND

- Detour from Viewcrest Dr (SBL* and NBR*)
- Detour from Pond Point Dr (SBR*)

- *SBL – Southbound Left
- *NBR – Northbound Right
- *SBR – Southbound Right

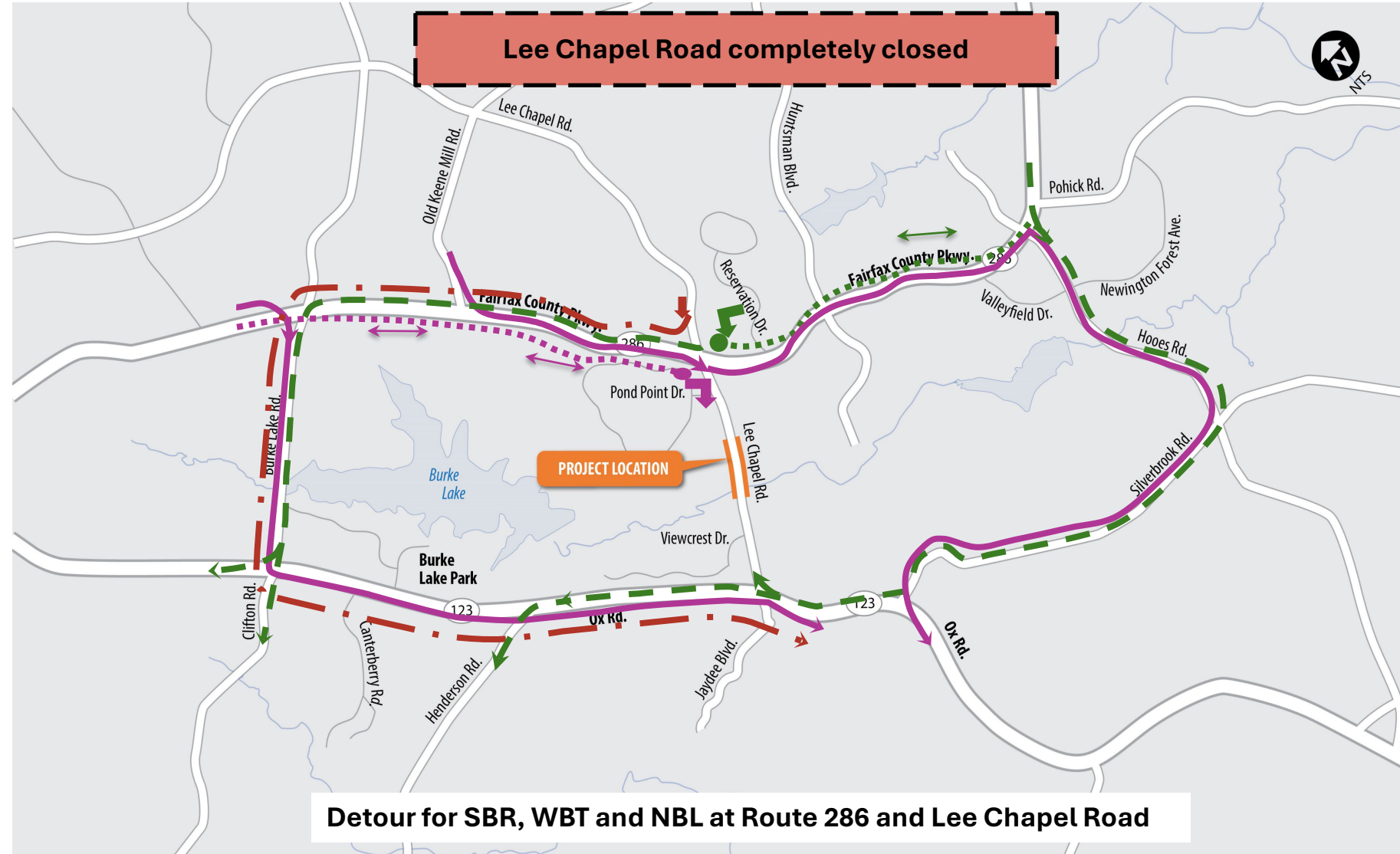


Detour for SBL, NBR at Viewcrest Drive and SBR at Pond Point Drive (Local Traffic From South Run Subdivision)

MOT – Road Closed/Local Access Temporary Gravel Roadway

LEGEND

-  Detour from Fairfax County Pkwy (SBR*)
-  Detour from Fairfax County Pkwy (NBL*)
-  Detour from Fairfax County Pkwy (WBT*)



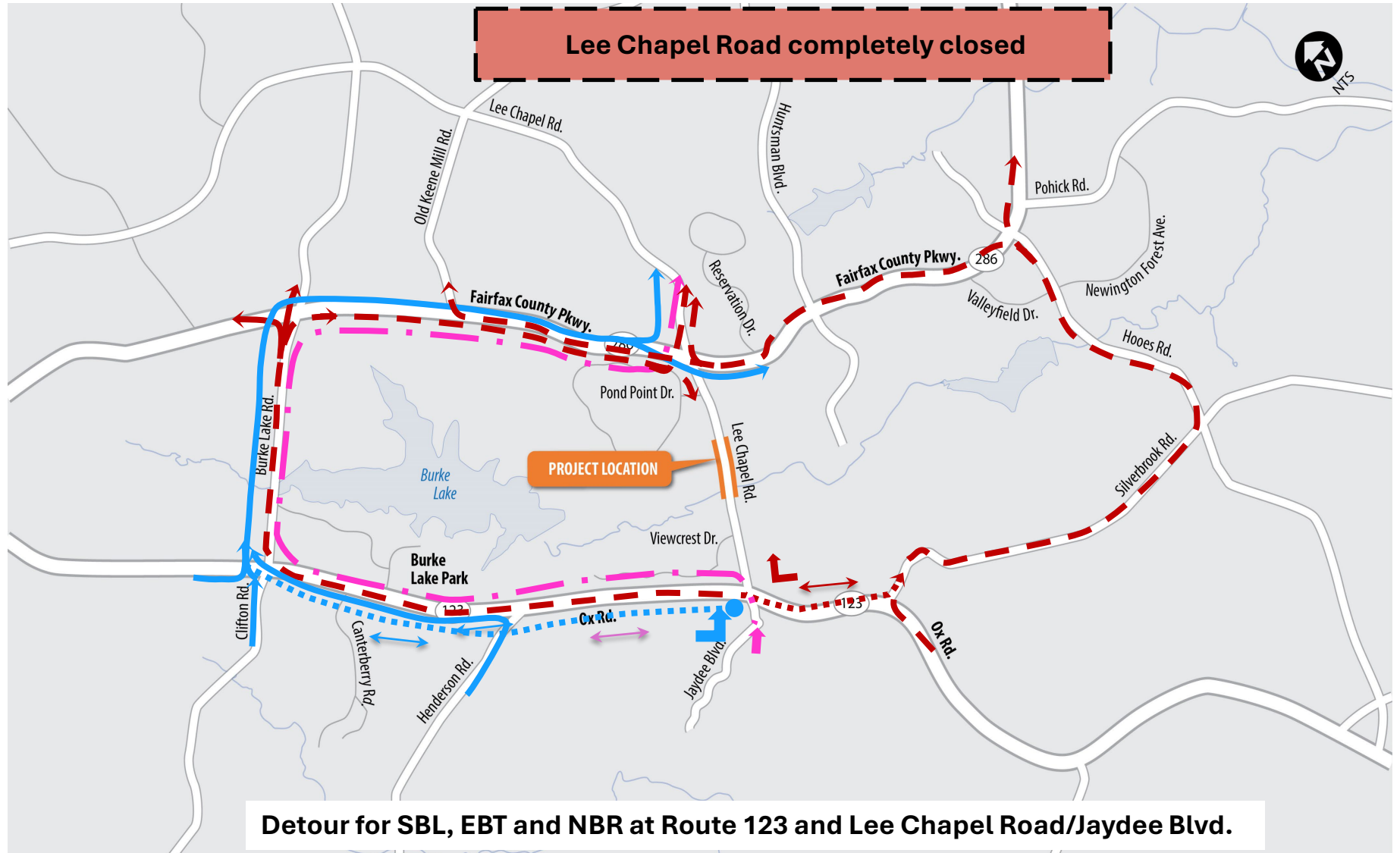
*SBR – Southbound Right
 *NBL – Northbound Left
 *WBT – Westbound Thru

MOT – Road Closed/Local Access Temporary Gravel Roadway

LEGEND

- Detour from OX Road (NBR*)
- Detour from OX Road (SBL*)
- Detour from OX Road (EBT*)

- *NBR – Northbound Right
- *SBL – Southbound Left
- *EBT – Eastbound Thru



Utilities

- Impacted Utilities:
 - Dominion Energy – poles and service connections
 - Verizon Virginia – possible overhead relocation/Service connections
 - Cox Communications – possible overhead relocation/service connections
 - Washington Gas – distribution and service connections
- Utility Test holes are completed and being analyzed
- Coordination with utility companies is ongoing

Environmental Analyses

Environmental Analyses Completed



Preliminary Environmental Inventory

Surface Waters Review

Cultural Resources Survey

Key Findings – Parklands, Historic Resources, Wetlands and Streams

Environmental Analyses Underway



Protected Species Habitat Survey

Identify protected species habitats and protective measures



Phase 2 Cultural Resources Survey

Define boundaries of important historic and cultural sites and protective measures



Hazardous Materials Survey

Identify potentially hazardous materials present and protective measures



Tree Impact Areas



Next Steps – Approvals & Permits

Stream and Wetland Impact Permit

- Confirms only minimal impacts to environmental resources

Section 6(f) Parklands Conversion Approval

- Ensures fair replacement for park land conversion

National Environmental Protection Act (NEPA) Categorical Exclusion

- Confirms the project meets federal review criteria

Project Cost and Schedule

- Comments due June 30, 2026
- Review and address comments
- The tentative project schedule is as follows:
 - 90% Design Completion – Summer 2026
 - Land Acquisition Begins – Winter 2026
 - Land Acquisition Completes – Winter 2027/2028
 - Utility Relocation – Fall 2027 – Summer 2028
 - Construction Begins – Summer 2028
 - Construction Completes – Spring 2029
- Project Cost- \$9.5M

Contact Information for Public Feedback

Project Website:

<https://www.fairfaxcounty.gov/transportation/projects/lee-chapel-road>

- Presentations slides and video of this presentation will be uploaded to the website.
- Provide any questions or comments by June 30, 2026, using the link or QR code below:

<https://publicinput.com/Lee-Chapel-Road>

Submit comments via mail or voicemail:

Dipesh Pandey, Project Manager
Fairfax County Department of Transportation
4050 Legato Rd, Suite 400, Fairfax, VA 22033
Phone number for comments:
703-890-5898, Project Code 1078



Questions and Answers

To Ask a Question or Make A Comment:

- Click **Raise Hand** (top of screen, next to the three dots) to ask a question.
- Wait for the moderator to call on you and enable your microphone.
- Unmute, ask your question or provide your comment.
- Mute yourself after speaking.
- Questions and comments may also be submitted through the **Chat** box.
- Phone participants: Press ***5** to raise your hand.
- When called on, press ***6** to unmute.
- After speaking, press ***6** again to mute.

Thank You!