

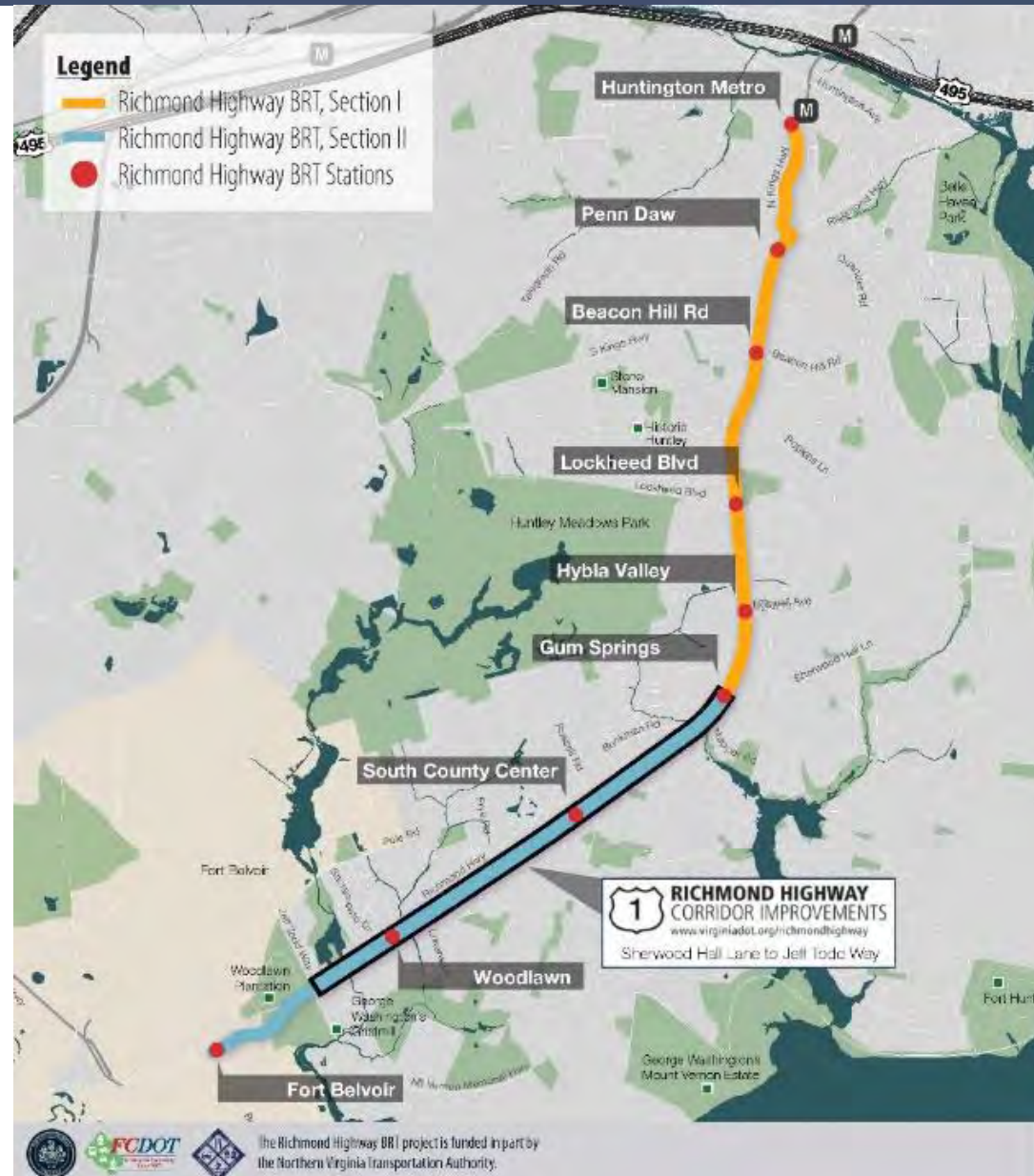


County of Fairfax, Virginia



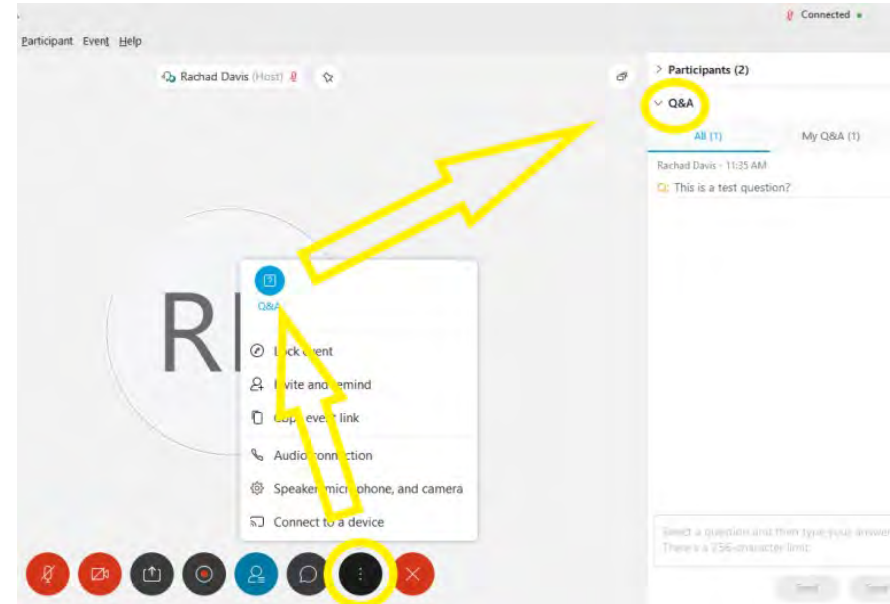
# Richmond Highway Bus Rapid Transit

December 2020 Update



# About Tonight's Meeting

- **Presentation followed by Q&A**
- **To ask a question, please use the WebEx "Q&A" feature:**
  - Open the "Q&A" window.
  - Type in your question.
  - Please only use the "chat" feature for questions related to the meeting format or technical/computer issues.
- **To ask questions via phone:**
  - Press \*3 to "raise your hand" and to be added to the queue.



# Agenda

- BRT Project Overview
- BRT Project Update
  - Right-of-Way Acquisition
  - Station Design
- Other Active Corridor Projects
  - Corridor Improvements Project
  - Urban Design Guidelines
  - ActiveFairfax
- Next Steps
- Survey Overview
- Discussion/Q&A

## Presenter

### **Eric M. Teitelman**

- Fairfax County Dept. of Transportation (FCDOT)
- Chief, Capital Projects and Traffic Engineering Division
- Richmond Highway BRT



## Other Panelists

- **Dan Reinhard** – Virginia Dept. of Transportation (VDOT), Richmond Highway Corridor Improvements
- **JoAnne Fiebe** – Fairfax County Department of Planning & Development (DPD), Urban Design Guidelines
- **Chris Wells** – FCDOT, ActiveFairfax

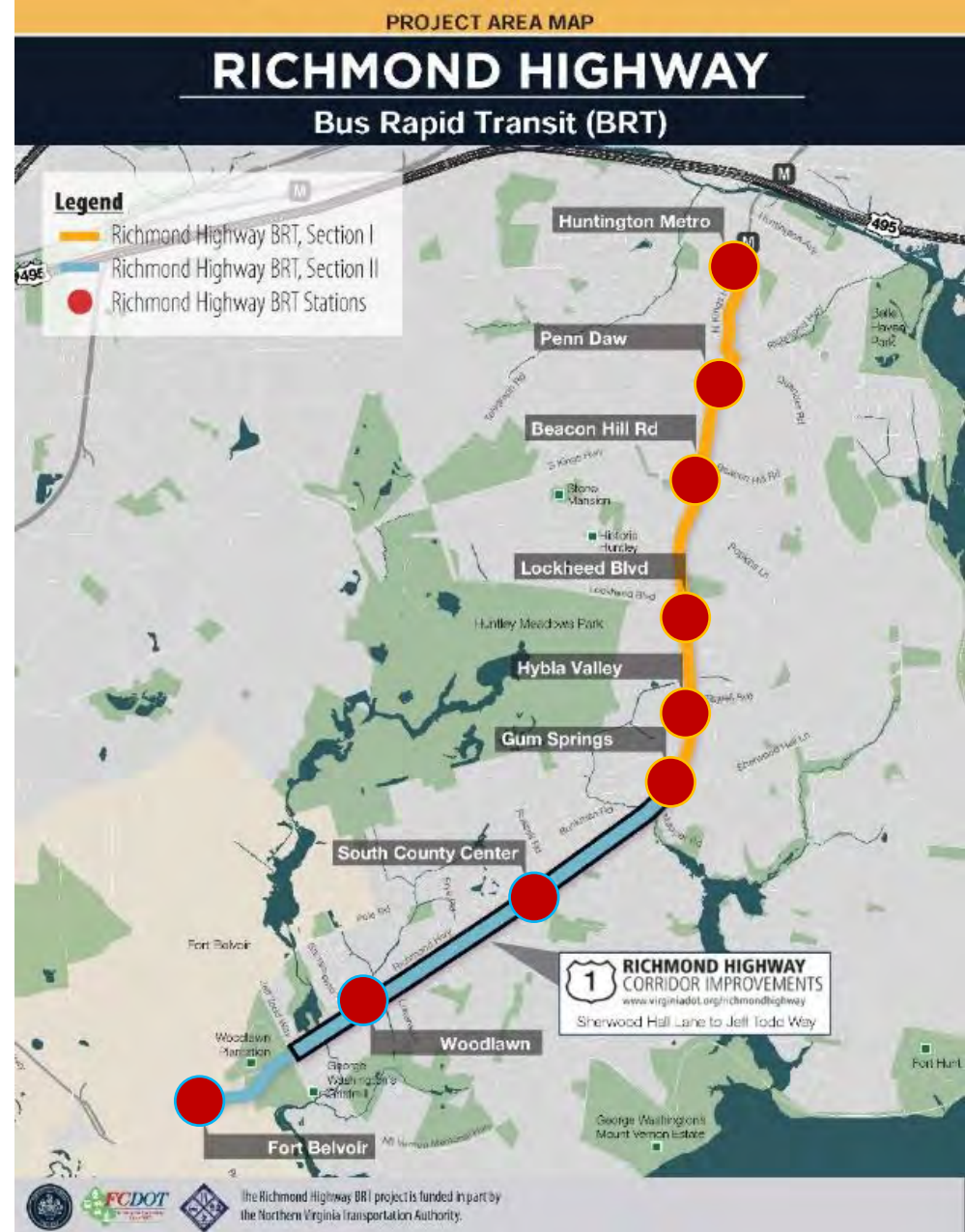


# Overview

- The Richmond Highway Bus Rapid Transit (BRT) Project is an effort to **plan, design, and construct** a BRT system between Huntington Metrorail Station and Fort Belvoir
- **Nine potential BRT stations**, with the system constructed in two sections
- **VDOT and has a related project in the corridor – more on that later in the presentation**

*For more information about the benefits of BRT systems and background information related to Richmond Highway BRT, please visit the website:*

**[fairfaxcounty.gov/transportation/richmond-hwy-brt](http://fairfaxcounty.gov/transportation/richmond-hwy-brt)**

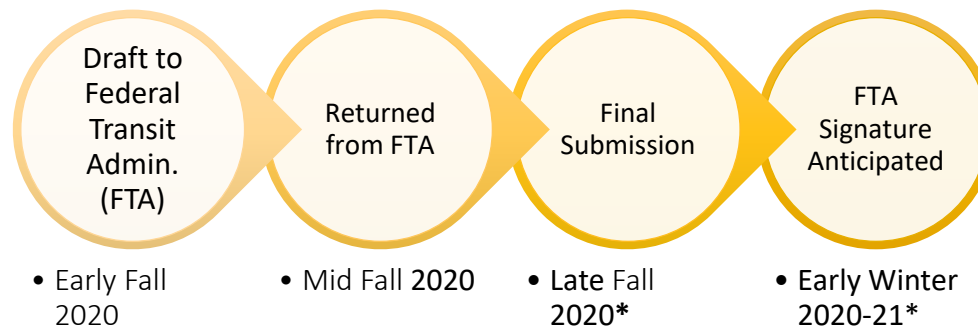


# BRT Project Updates

# Project Progress: Design

- Design is approximately 30% complete
- Website has updated roll plans
- **National Environmental Policy Act (NEPA)** final signature anticipated 1st quarter 2021
- **We will continue to refine the design, reduce/minimize impacts, and enhance the stormwater management design**

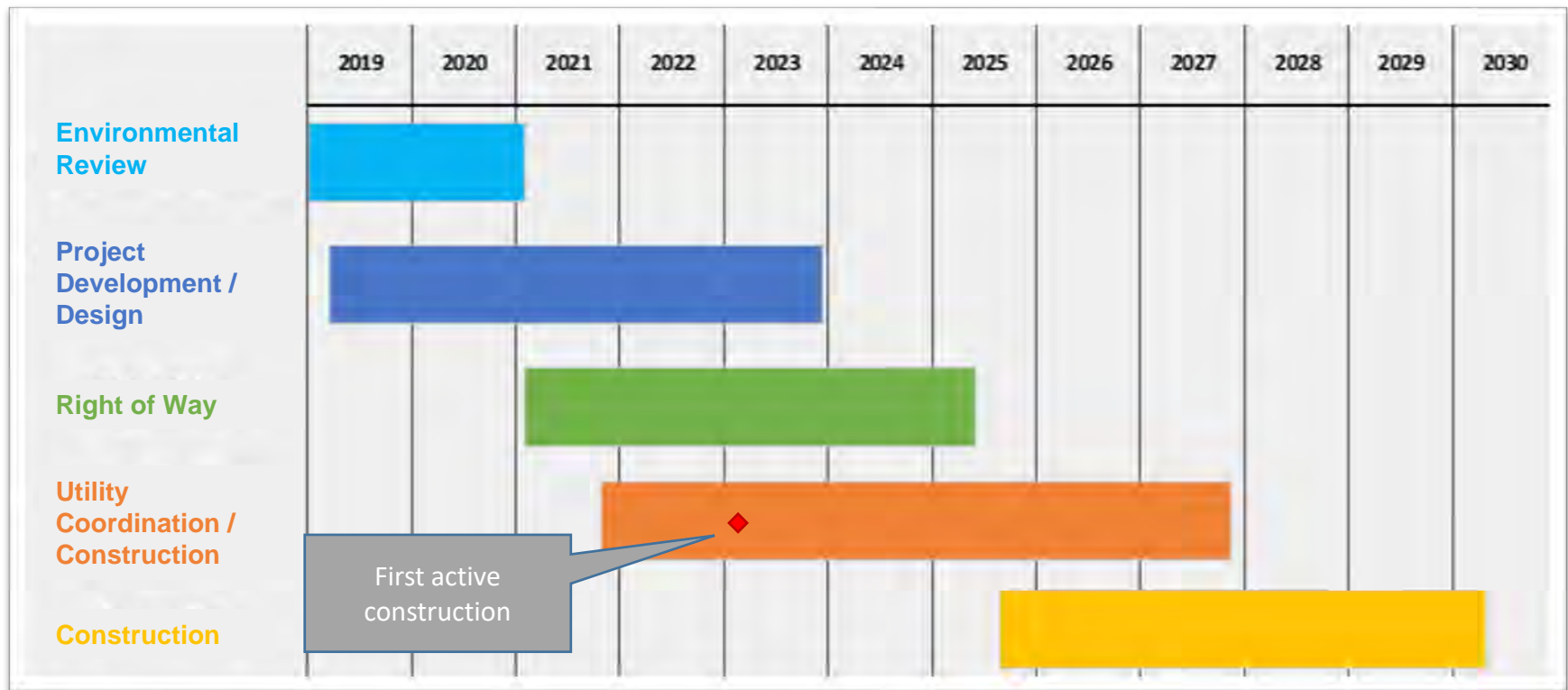
## NEPA Schedule



\*Timing dependent on review process

# BRT Project Schedule

- Schedule adjusted based on several factors (coordination with VDOT roadway widening, environmental process, design changes to reduce impacts, etc.).
- BRT revenue service expected in **early 2030**.
- Right-of-way acquisition must be complete prior to start of roadway construction.
- **First active construction** is related to utility relocation in **early 2023**.

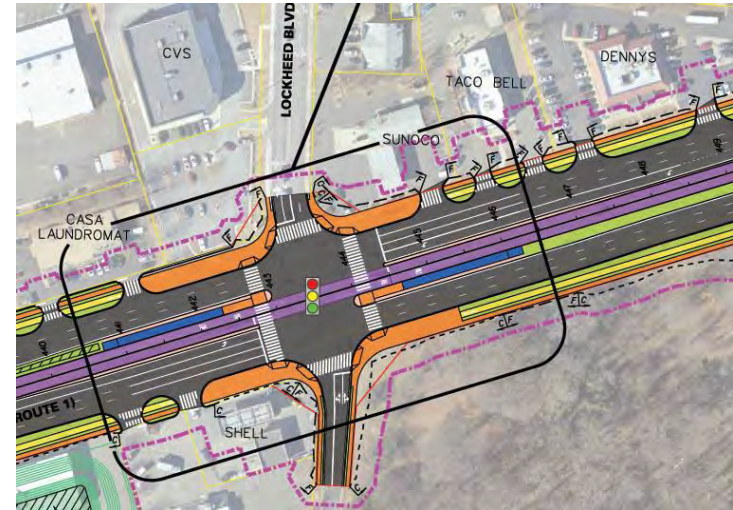


# Right-of-Way Acquisition Overview



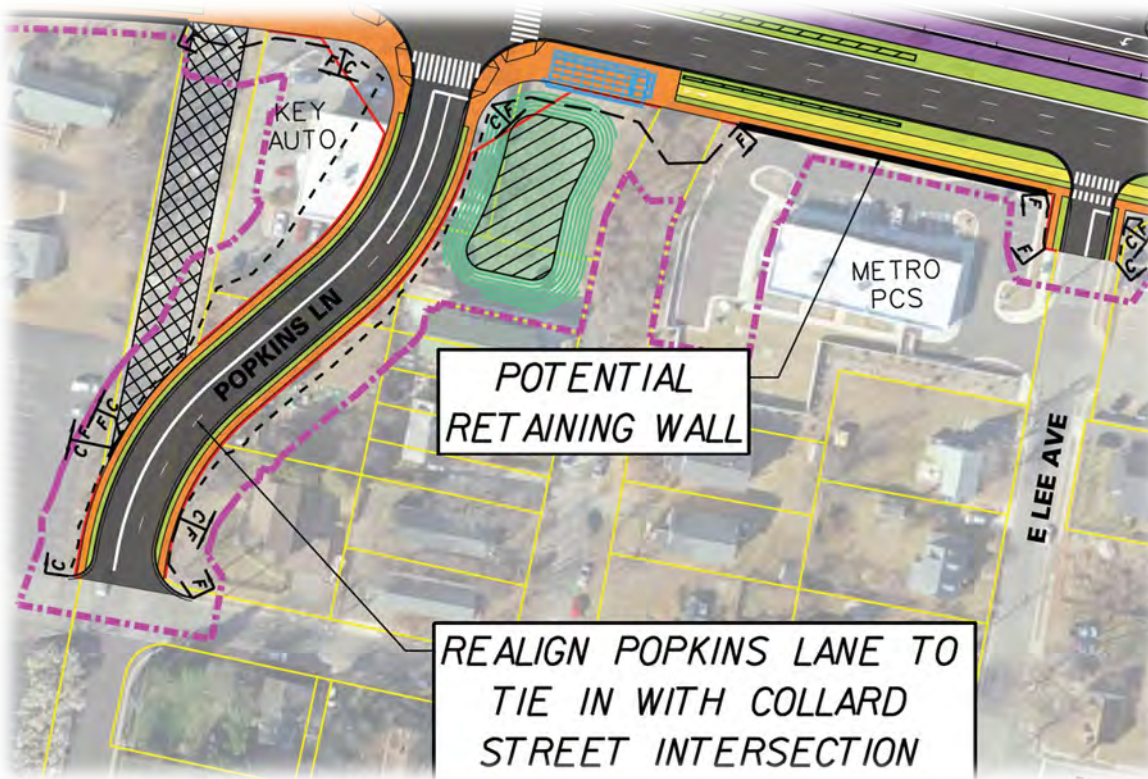
# October Meeting: Right-of-Way (ROW)

- **FCDOT will need to acquire land, or right of way (ROW)**, by paying "just compensation" to affected private property owners.
- We held two virtual community meetings on **October 20 and 22** to share information about right-of-way acquisition, including:
  - Overview and schedule of the process
  - Legal requirements
  - Types and scale of potential right-of-way impacts
  - How to review the maps to see potential impact areas
  - Available services for impacted property owners and tenants, including businesses
  - Information about property surveys and environmental investigations



# Checking for Potential Impacts

- Maps available at:
- [fairfaxcounty.gov/transportation/richmond-hwy-brt/materials](http://fairfaxcounty.gov/transportation/richmond-hwy-brt/materials)



## Types of impacts:

- Total Acquisition
- Partial Acquisition
- Perpetual Easement
- Temporary Construction Easement

- PRELIMINARY LIMIT OF DISTURBANCE
- EXISTING PARCEL BOUNDARY
- PROPOSED RIGHT-OF-WAY
- PROPOSED GRADING LIMITS

# Moving Forward

- **We are expecting the ROW process for BRT to begin in Spring 2021.**
  - This fall, VDOT is starting ROW acquisition for their project south of Sherwood Hall Lane.
- **Project team members will meet individually with impacted property owners.**
- To schedule a time to speak with staff **please email the Project Team at [DOTBRT@fairfaxcounty.gov](mailto:DOTBRT@fairfaxcounty.gov)**, and include "right-of-way" or "ROW" in the subject line.
- **To learn more:**
  - View the ROW presentation on the website:  
[fairfaxcounty.gov/transportation/richmond-hwy-brt/materials](https://www.fairfaxcounty.gov/transportation/richmond-hwy-brt/materials)
  - You can also find more information on the right-of-way page:  
<https://www.fairfaxcounty.gov/transportation/richmond-hwy-brt/right-of-way>

# Station Design

# November Meeting: Station Design

- We held virtual community meetings on November 4 and 5 to share information about station design, including:
  - The elements of a BRT station
  - Process to develop station design concepts
  - Two draft concepts, for review
  - Overview of potential “community charm” elements
- The survey is open through December 18
- Presentation and survey found at:  
[fairfaxcounty.gov/transportation/richmond-hwy-brt/materials](https://fairfaxcounty.gov/transportation/richmond-hwy-brt/materials)



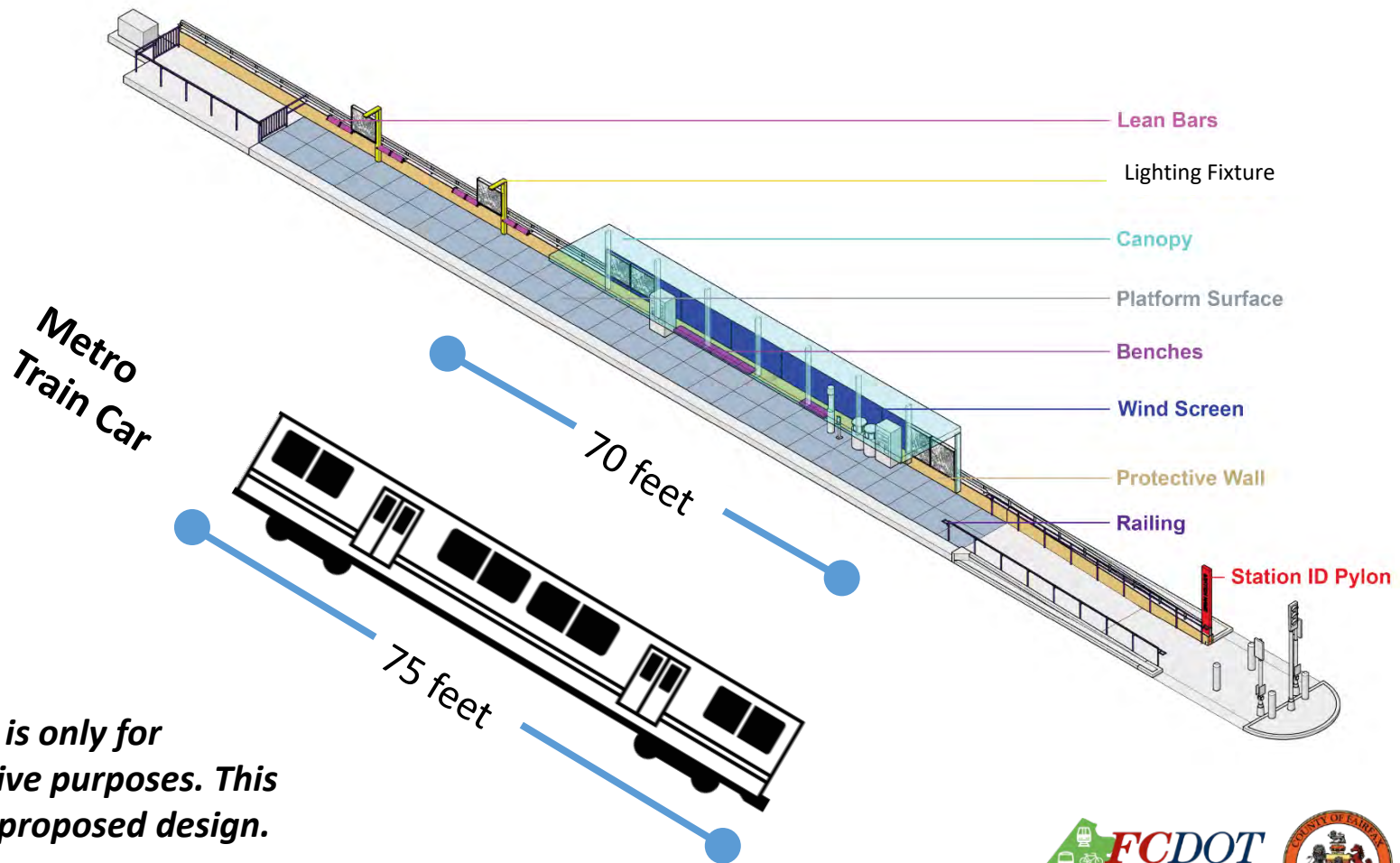
# Concept overview

- **We are sharing two concepts** and are seeking community input.
- **In the end, there will be one concept** that is taken to the next level of design.
  - This design will be used for all nine Richmond Highway BRT stations.
- **These are conceptual designs**, not final designs.
- **The designs do not show all station and station area components** that will be included in the final design.
  - Components to be added or refined in a future stage include:
    - Security features
    - Landscaping and ecological features
    - Community identifying components (more details on this later in presentation)
    - Fare collection devices
    - Branding
    - Signage/wayfinding



# Station Characteristics

The covered platform area (70 feet) is nearly the length of a Metro train car (75 feet).



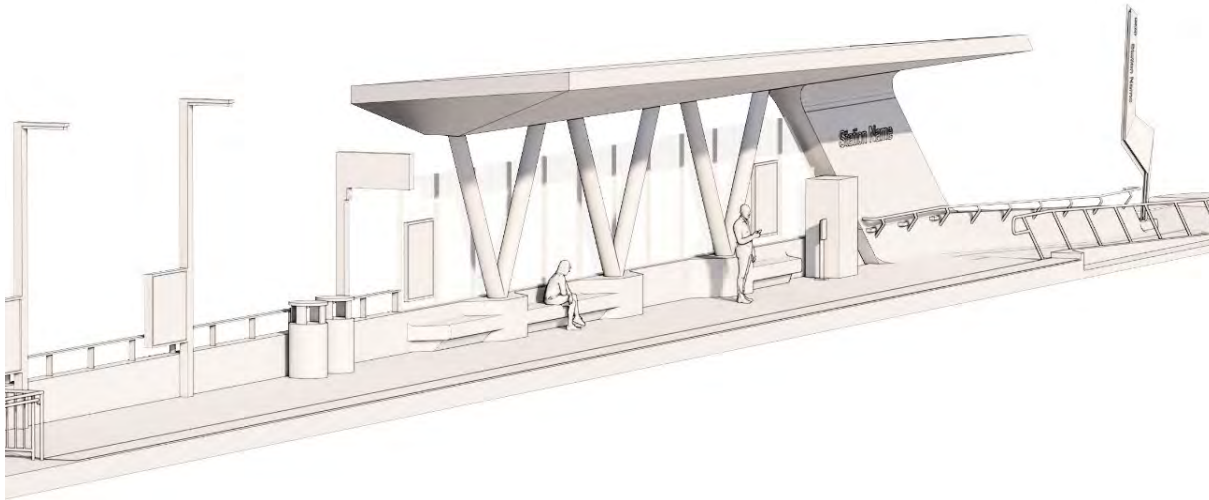
# Station Design Concept 1

- The corridor has a storied military history and played a unique role in the development of aviation. While those uses are less evident today, their spirit continues through place names such as Beacon Hill and Lockheed Boulevard, and through the historic markers and memorials reflecting this period.
- This theme honors this history with a focus on the role of flight with its dynamic shapes and materials reflecting the ideals of movement and connection.



# Station Design Concept 1

- **Incorporates theme elements of Aviation, History, and Ecology**
  - **Aviation:** Dynamic shapes and materials reflect the ideals of movement and connection.
  - **History:** The shape of the canopy references the aviation and military history of the corridor by resembling an airplane wing.
  - **Ecology:** Organic form rising from the ground, materials used for the station, and how new development can both respect and restore the natural environment.





**Station Design Concept 1**  
**Fall 2020**  
**Richmond Highway BRT**  
**[fairfaxcounty.gov/transportation/richmond-hwy-brt](https://fairfaxcounty.gov/transportation/richmond-hwy-brt)**



# Station Design Concept 1

The shape of the canopy resembles an airplane wing



*This is a draft station design concept. Elements outside of the station area are shown for context only and are not intended for review as part of the concept.*

*Richmond Highway Bus Rapid Transit*



# Station Design Concept 1



**Windscreens will provide protection from the elements and opportunities to add maps and other signage**

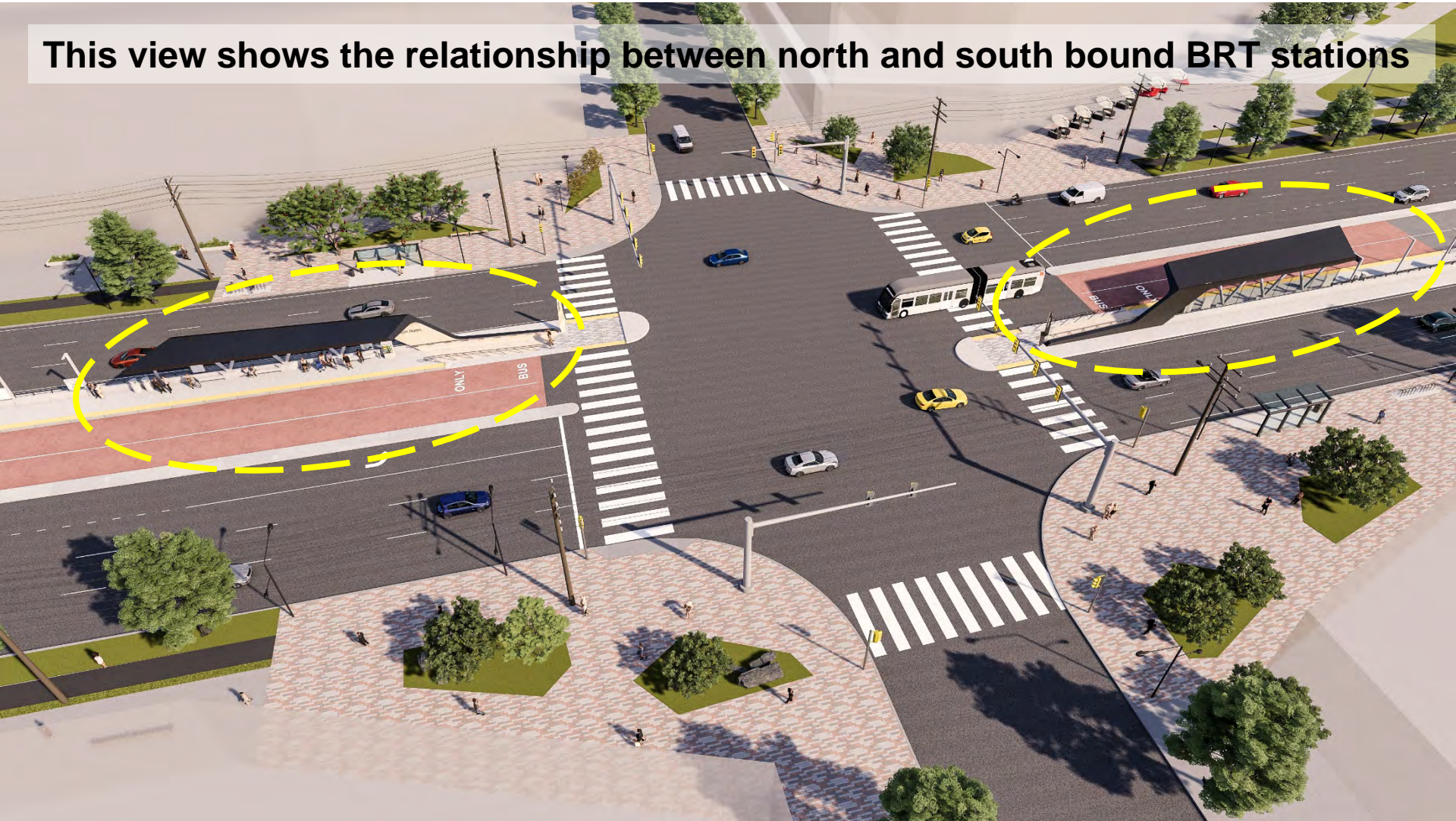
*This is a draft station design concept. Elements outside of the station area are shown for context only and are not intended for review as part of the concept.*

*Richmond Highway Bus Rapid Transit*



# Station Design Concept 1

This view shows the relationship between north and south bound BRT stations



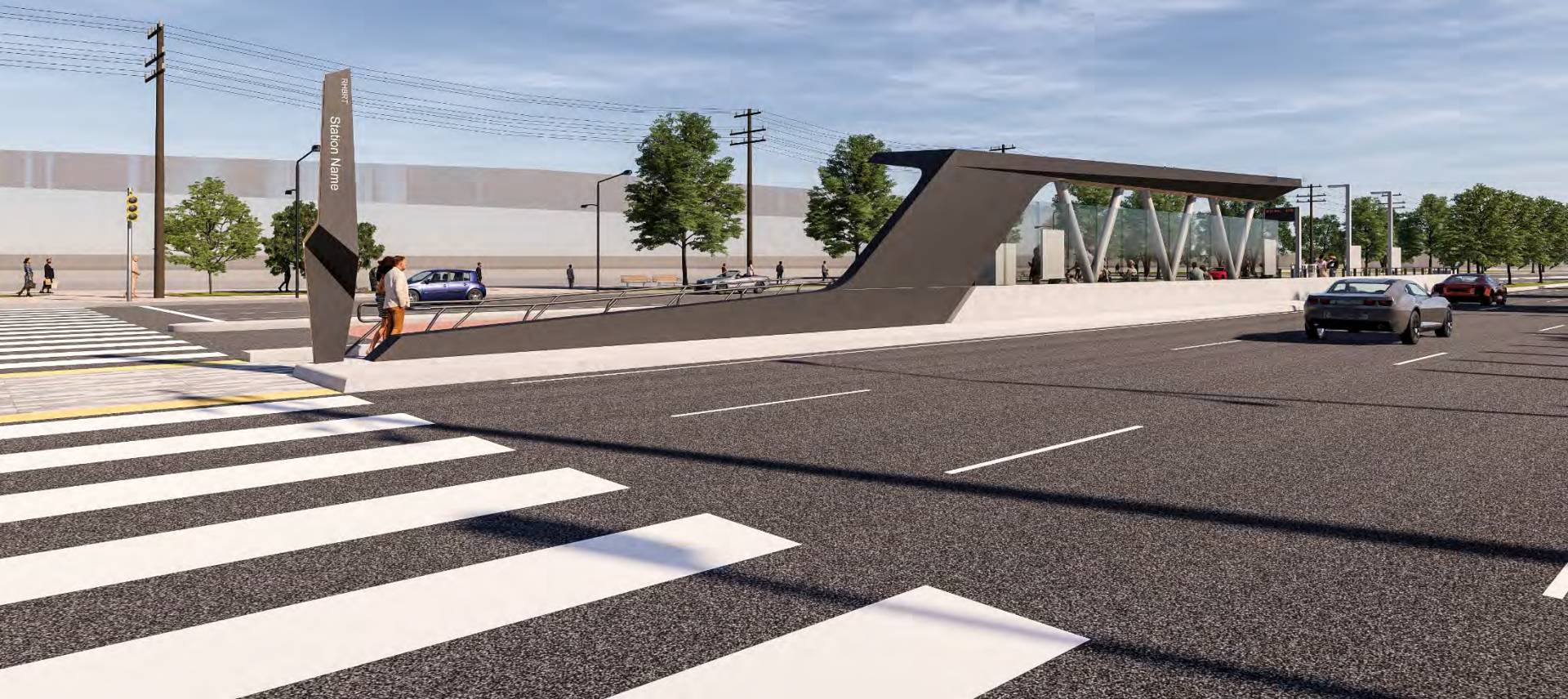
*This is a draft station design concept. Elements outside of the station area are shown for context only and are not intended for review as part of the concept.*

*Richmond Highway Bus Rapid Transit*



# Station Design Concept 1

This is the view from the sidewalk, with the sample station identifier shown near the entrance



*This is a draft station design concept. Elements outside of the station area are shown for context only and are not intended for review as part of the concept.*

*Richmond Highway Bus Rapid Transit*



# Station Design Concept 2

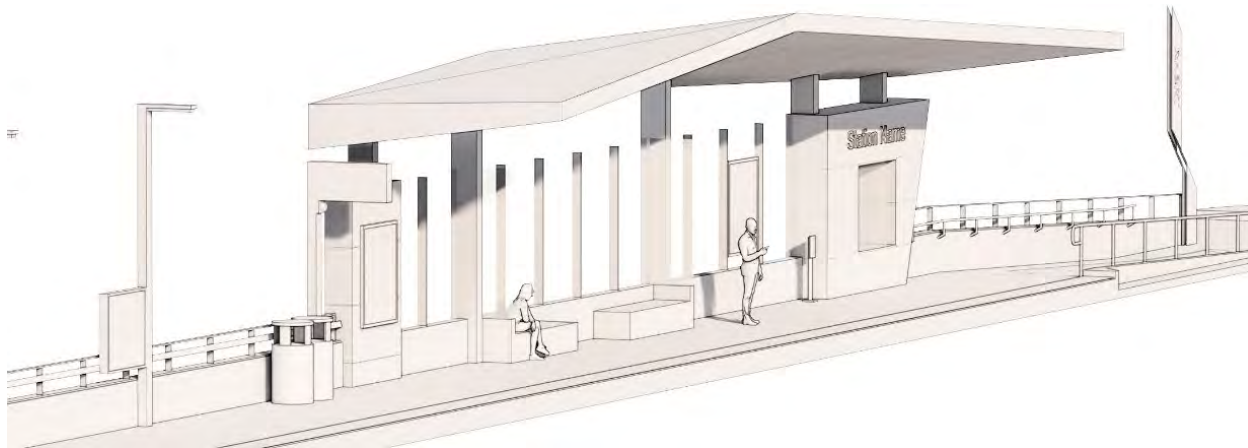
- The post-WWII boom car culture spurred the development of an eclectic mix of housing, service stations, restaurants and motels along Richmond Highway corridor, reflecting its role as a gateway to the National Capital Region. This role as a gateway continues to this day, with Huntington Metrorail Station as a gateway into the metrorail system and Richmond Highway continuing to serve as a major transportation route, destination, and connector to flourishing neighborhoods.
- This theme captures the excitement of this era of transportation transformation with simple (yet iconic) forms, diverse colors, and bold lighting/signage.





# Station Design Concept 2

- **Incorporates theme elements of Gateway and History**
  - **History:** Peak-roofed structure.
  - **Gateway:** Simple (yet iconic) forms, bold lighting/signage.



**Station Design Concept 2**  
**Fall 2020**  
**Richmond Highway BRT**  
**[fairfaxcounty.gov/transportation/richmond-hwy-brt](https://fairfaxcounty.gov/transportation/richmond-hwy-brt)**

# Station Design Concept 2

The shape of the canopy resembles a peaked roof or a porch



*This is a draft station design concept. Elements outside of the station area are shown for context only and are not intended for review as part of the concept.*

*Richmond Highway Bus Rapid Transit*



# Station Design Concept 2

Windscreens will provide protection from the elements and opportunities to add maps and other signage



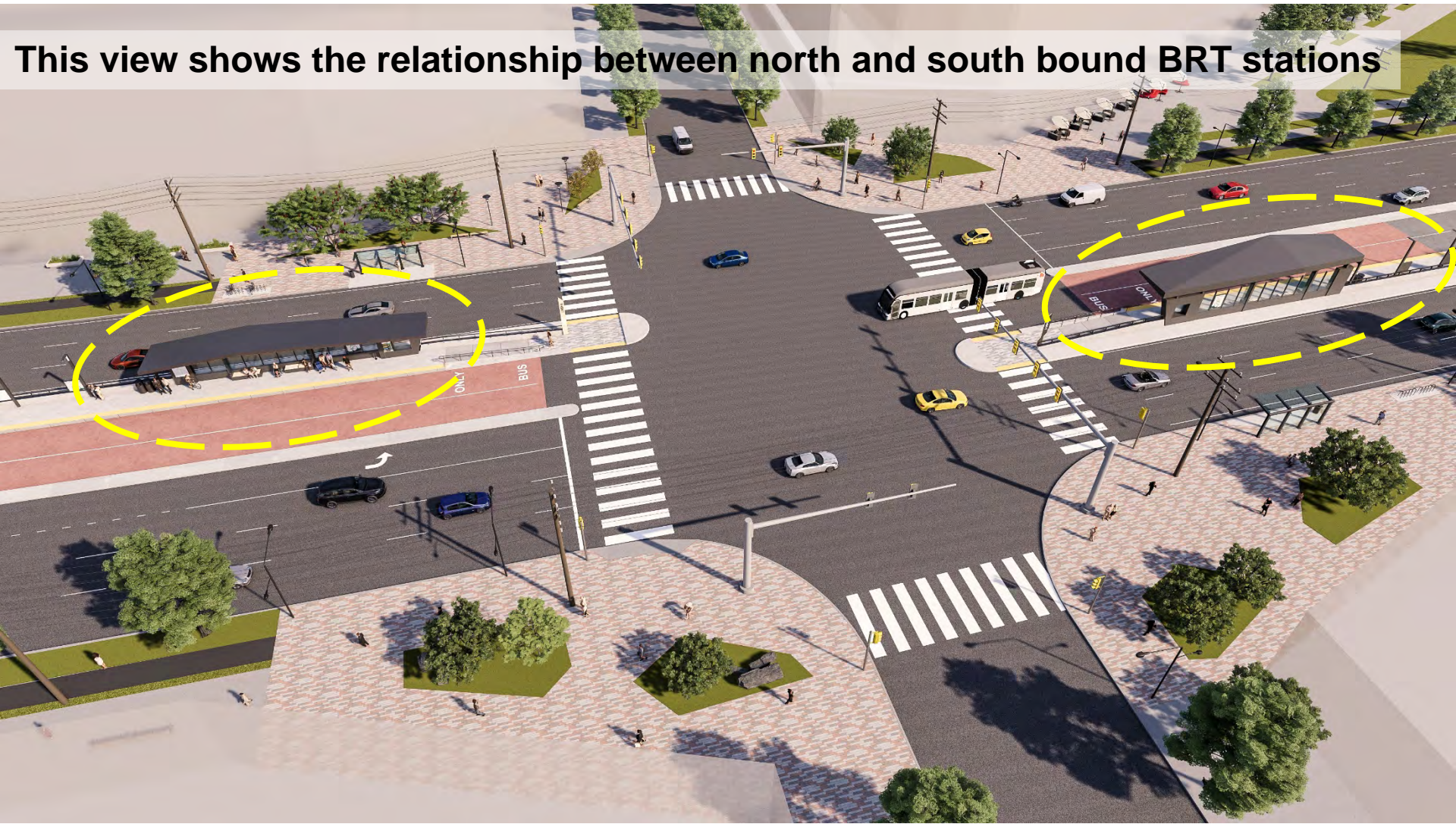
*This is a draft station design concept. Elements outside of the station area are shown for context only and are not intended for review as part of the concept.*

*Richmond Highway Bus Rapid Transit*



# Station Design Concept 2

This view shows the relationship between north and south bound BRT stations



*This is a draft station design concept. Elements outside of the station area are shown for context only and are not intended for review as part of the concept.*

*Richmond Highway Bus Rapid Transit*



# Station Design Concept 2

This is the view from the sidewalk, with the sample station identifier shown near the entrance



*This is a draft station design concept. Elements outside of the station area are shown for context only and are not intended for review as part of the concept.*

*Richmond Highway Bus Rapid Transit*



# Neighborhood "Charm" at Stations

- Though there will only be one final concept used at all nine BRT stations, there are spaces in both concepts to **incorporate the history and characteristics of the neighborhoods** surrounding each station area.
- These **potential community “charm” elements** are not **currently shown** on the two concepts.



# Examples of Neighborhood "Charm"

**Example of plaza sculpture**



***These are not proposed neighborhood identity concepts. These are only shown as examples of how these elements could be incorporated into the station design.***

**Example of windscreen glass design**



**Example of platform paving design**



# Please Complete the Survey to Tell Us...

## 1. Station Concepts

- Which **station concept** do you like best?
- What **features** do you like? What would you change?

## 2. Neighborhood “Charm” Elements

- How would you like to see the **station area neighborhood reflected in the design?**
- What **community history, culture, or amenities** would you like to see highlighted at each station?

**The station design survey is open  
until December 18:**  
[surveymonkey.com/r/RHBRT\\_web](https://surveymonkey.com/r/RHBRT_web)



**For each station, what neighborhood characteristics, history, or cultural elements would you like to see reflected in the station design?**



# Next Steps for Station Design

- **We will summarize the input** we receive at meetings, through emails, and on the survey.
- **This input will be shared** with the County Supervisors and others on the project Executive Committee, **who will make the final decision on the concept.**
- As the final design is developed, we will incorporate more detail, including neighborhood identity components.
- **There will be more opportunities to provide your input about this as the design evolves!**





# Active Projects on Richmond Highway: Corridor Improvements Project

Project Manager: Dan Reinhard, VDOT



# Project Overview

- **Widening of Richmond Highway (US Route 1) from four lanes to six lanes**
  - Jeff Todd Way to Sherwood Hall Lane
  - Approximately 3 miles
- **Safety improvements**
- **Congestion relief**
- **Intersection improvements**
- **Median reservation for future Richmond Highway BRT**
- **Sidewalks and separate bicycle paths on both sides of road**
- **Three bridge replacements**
- **Potential noise walls**
- **Utility relocations**
- **Stormwater management**

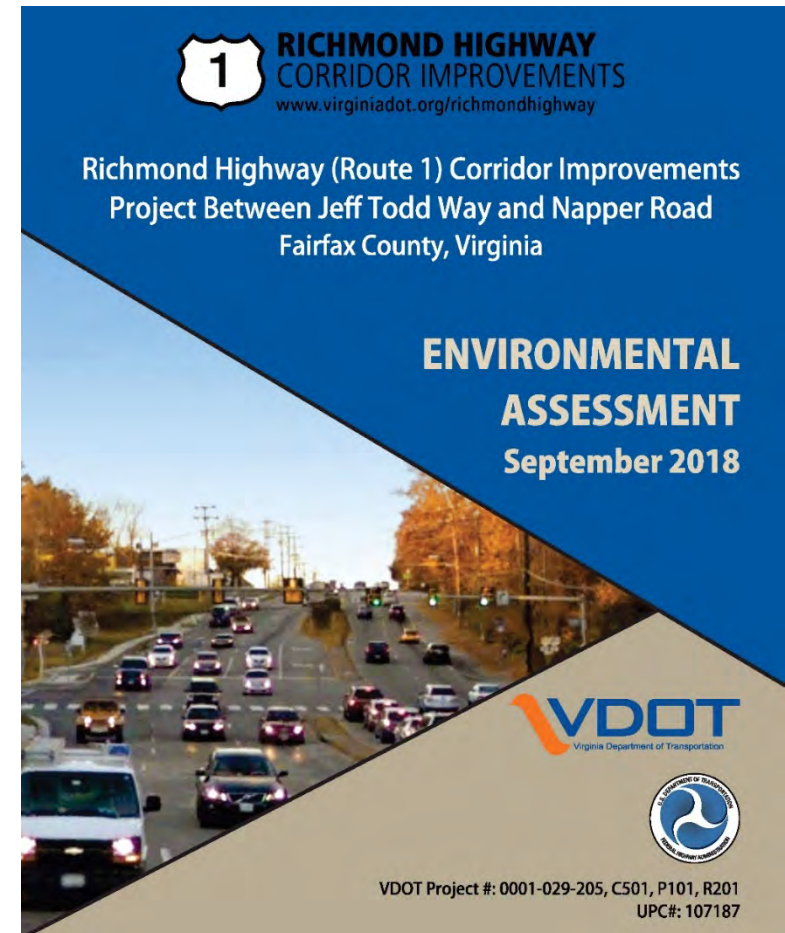




**RICHMOND HIGHWAY  
CORRIDOR IMPROVEMENTS**  
[www.virginiadot.org/richmondhighway](http://www.virginiadot.org/richmondhighway)

# Environmental Assessment

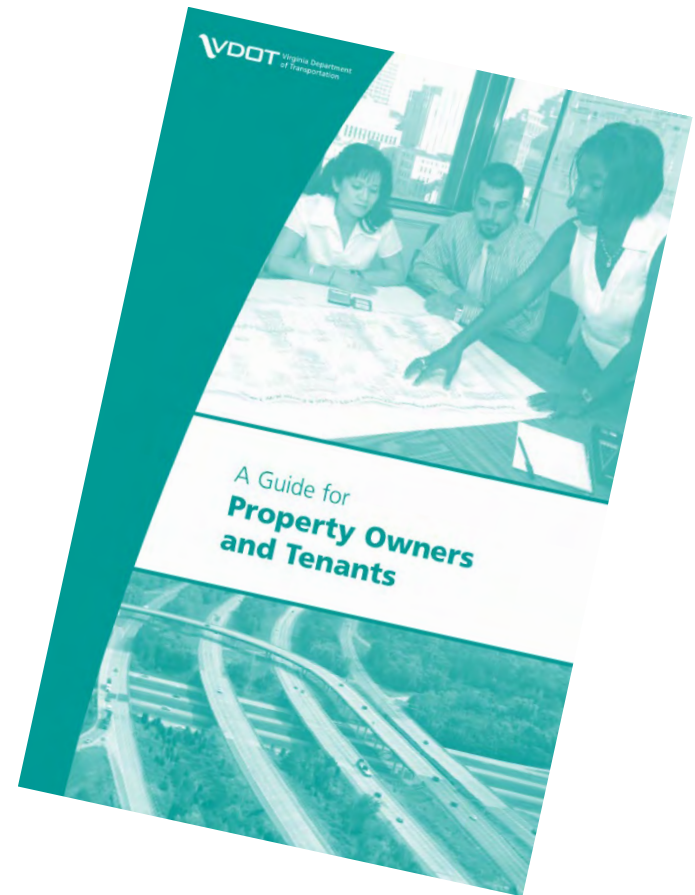
- A NEPA public hearing was held Oct. 29, 2018 and the comment period closed Dec. 6, 2018.
- EA Document is available on the website.
- Federal Highway Administration (FHWA) issued a Finding of No Significant Impact (FONSI) on October 19, 2020.





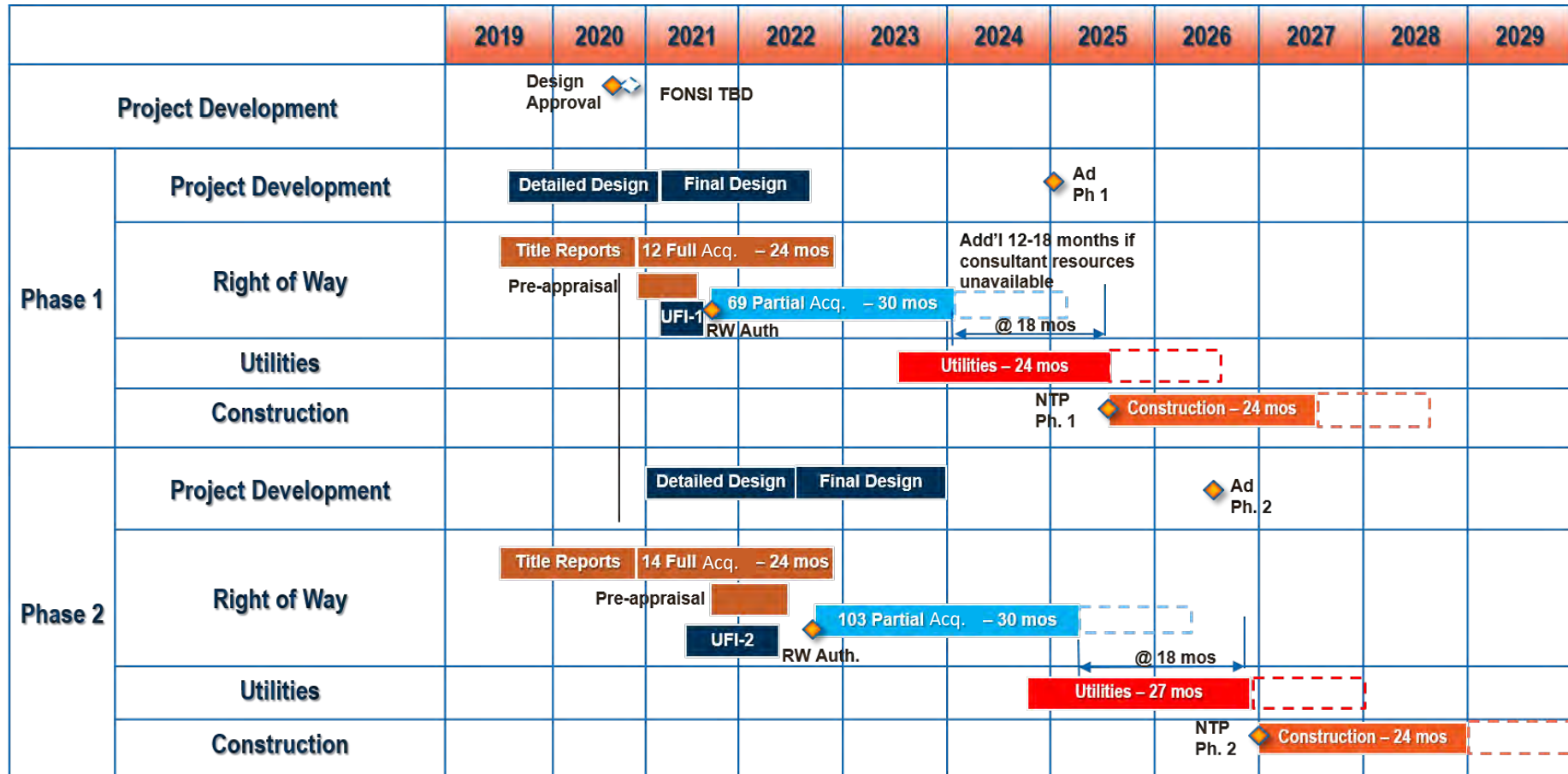
# Right-of-Way Acquisition

- Each property impact is unique
- Acquisition of right-of-way for entire property acquisitions in early 2021
- Acquisition of right-of-way for partial property acquisitions in phase 1 scheduled to begin in mid to late 2021
- Meetings with owners and tenants





# Richmond Highway Corridor Improvements Schedule



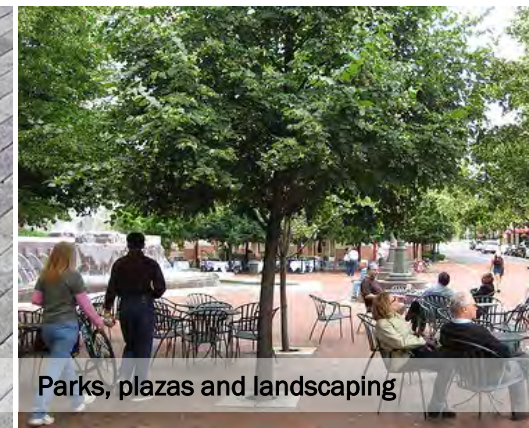
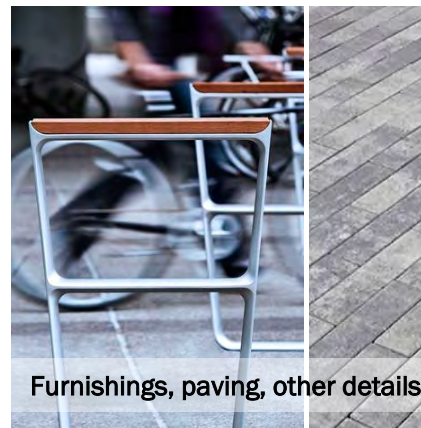


# Active Projects on Richmond Highway: Urban Design Guidelines

Project Manager: JoAnne Feibe, DPD

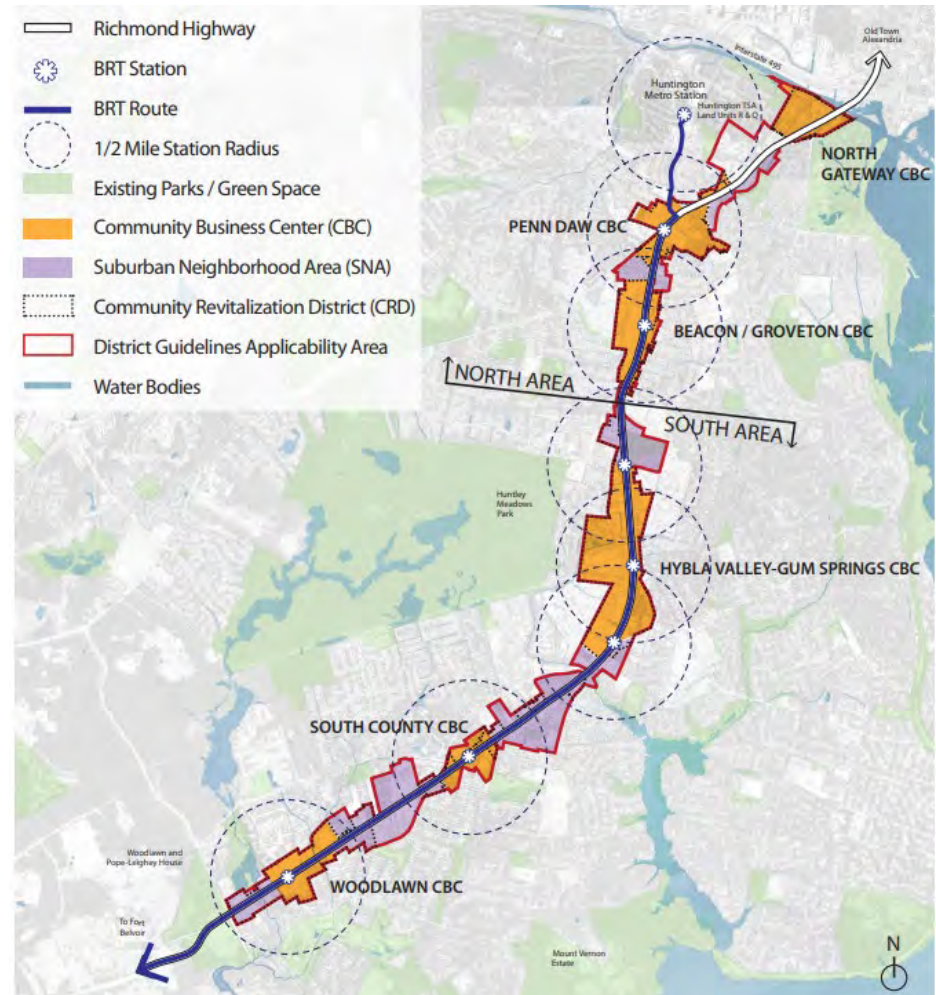
# Purpose

- Implement the vision for the corridor.
- Help to make the area more walkable and bike friendly.
- Coordinate with the BRT to enhance the transit rider experience.
- Build on the goal to turn Richmond Highway into a boulevard/main street for the community.
- Establish a consistent character for buildings and streets so that they are harmonious and build a sense of place.



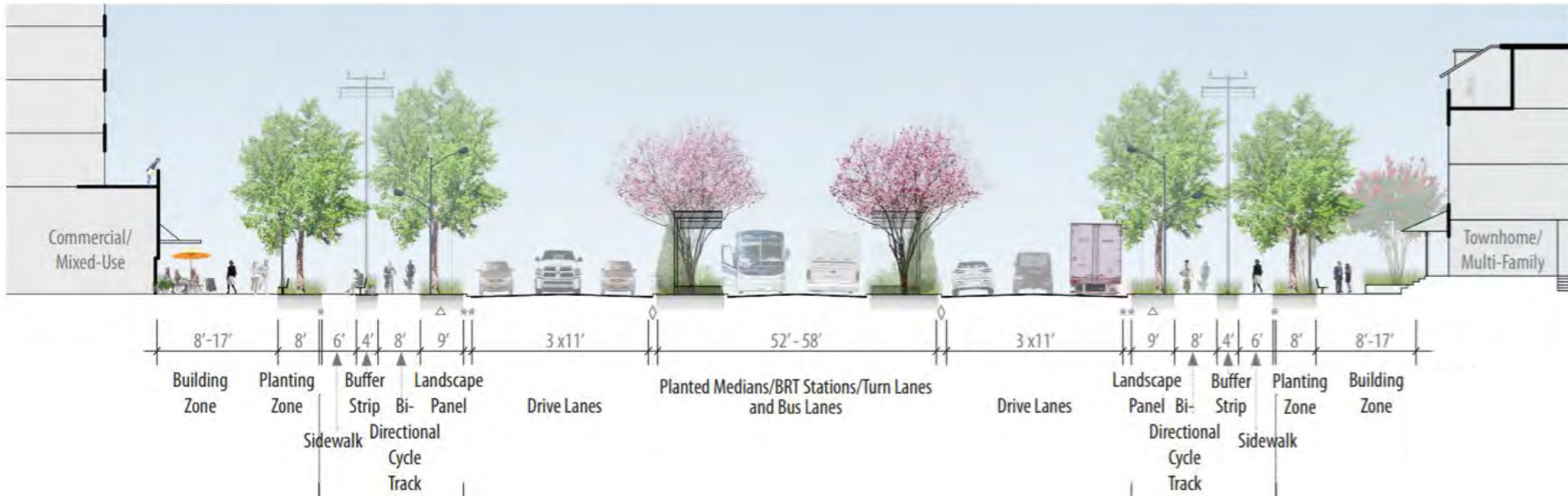
# Where They Apply

- The Guidelines apply to new developments along the Richmond Highway corridor.
- Staff and the community use the Guidelines while reviewing development projects

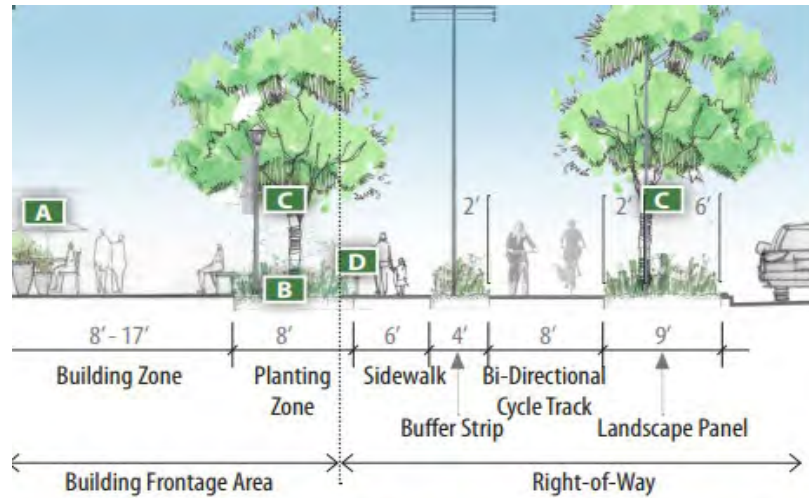




# Richmond Highway Design

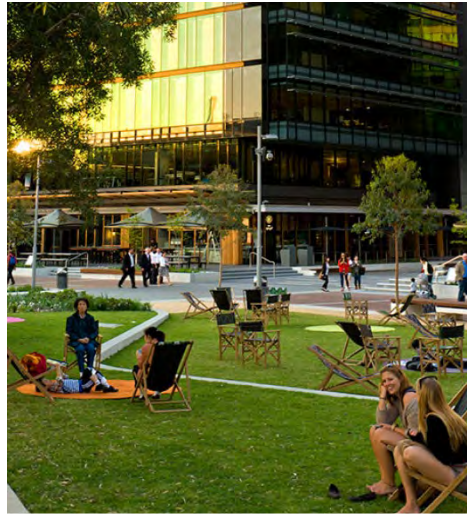
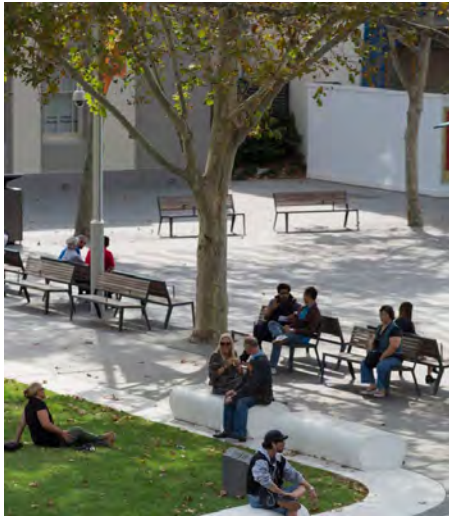


# Streetscapes





# Transit Plazas





# Check Them Out



[www.fcrevite.org/richmond-highway/design-guidelines](http://www.fcrevite.org/richmond-highway/design-guidelines)

# Active Projects in the County: ActiveFairfax Plan

Project Manager: Chris Wells, FCDOT

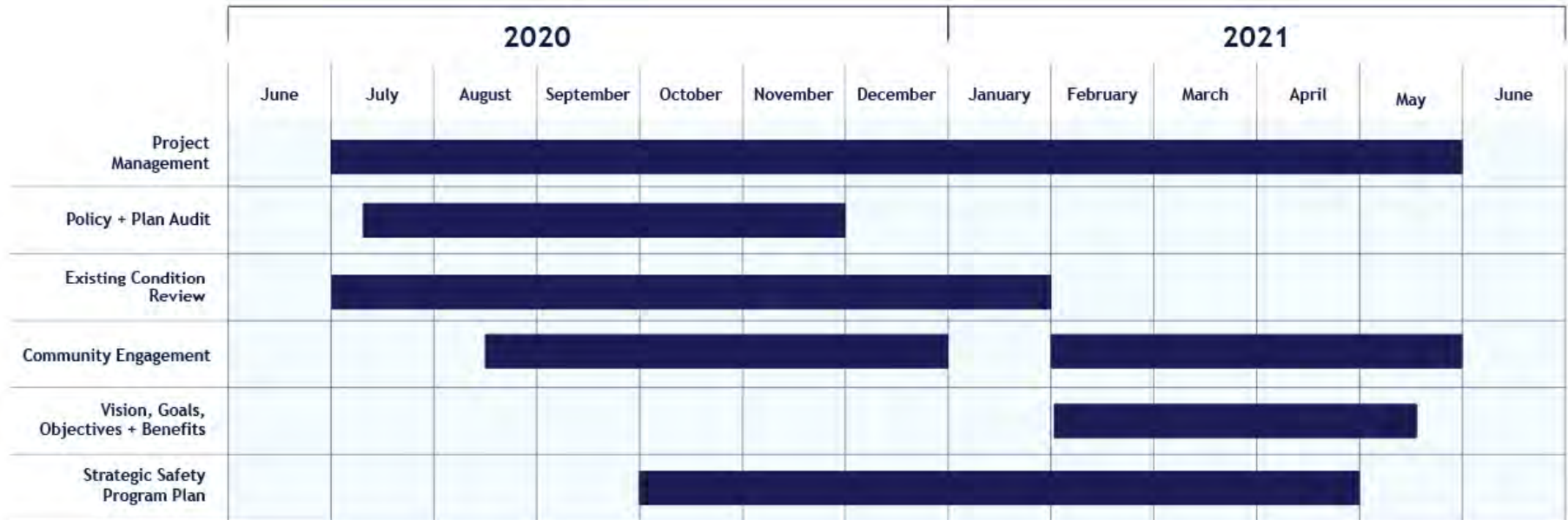
# ActiveFairfax Transportation Plan

- **Comprehensive Plan Update:**
  - Regional and local trails and bikeways network maps
    - Merge and enhance 2018 Countywide Trails Plan, 2014 Bicycle Master Plan – integrate and expand Capital Trails Network
    - Development of a County specific Active Transportation Facility Selection Toolkit
    - *New:* Specific pedestrian accommodation recommendations
- **Systematic Safety Action Plan**
- **Policy Recommendations**
- **Active Transportation Program Recommendations**
- **Priority Funding Recommendations**
- **Timeline:** Phase One 2020-2021, Phase Two 2021-2022
- **Website:** [www.fairfaxcounty.gov/transportation/bike-walk/activefairfax](http://www.fairfaxcounty.gov/transportation/bike-walk/activefairfax)





# Project Timeline (Phase One)



# Meeting Wrap-Up

# Coming Next Month: BRT System Branding

- We expect to hold a series of virtual meetings in January to discuss potential BRT system branding options.
- This brand – including a name, logo, colors, and more – would be used at the stations and on the buses.
- Along with that meeting, there will be a community survey to get your opinions on the potential brands.



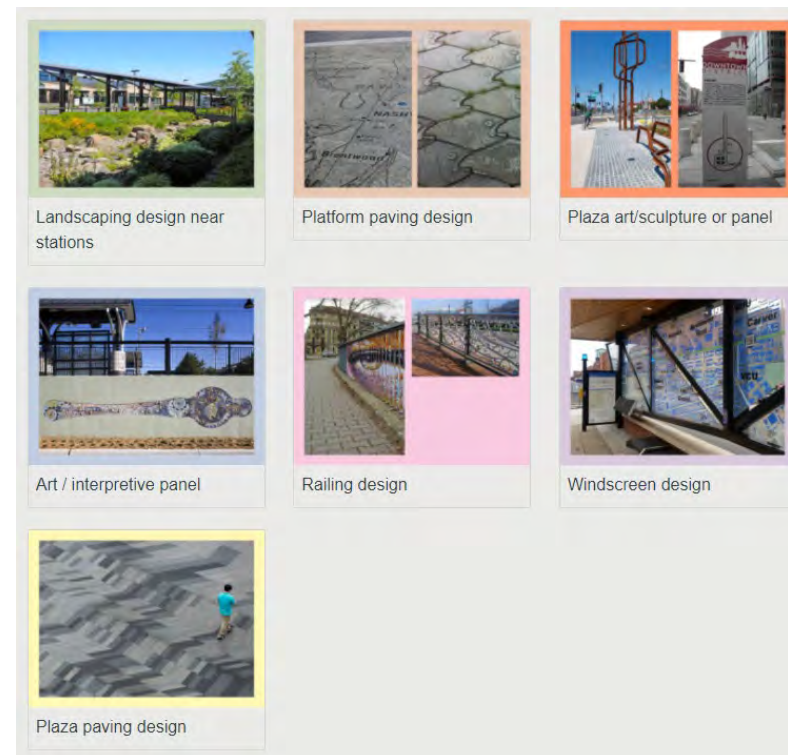
# Please complete and share the station design survey!

The survey can be found at:

[fairfaxcounty.gov/transportation/richmond-hwy-brt](https://fairfaxcounty.gov/transportation/richmond-hwy-brt)

2. Please let us know which concept best addresses the questions below. (Choose one, both, or neither.)

	Concept 1 Only	Concept 2 Only	Both Concepts	Neither Concept
<b>Clarity:</b> Would you know this is a bus station if you approached it from a sidewalk?	<input type="radio"/>	<input type="radio"/>	<input type="radio"/>	<input type="radio"/>
<b>Colors:</b> Do you like the colors used in the design for each station?	<input type="radio"/>	<input type="radio"/>	<input type="radio"/>	<input type="radio"/>
<b>Shape/form:</b> Which canopy shape do you like best?	<input type="radio"/>	<input type="radio"/>	<input type="radio"/>	<input type="radio"/>
<b>Scale:</b> Do you like the overall size/scale of the station architecture?	<input type="radio"/>	<input type="radio"/>	<input type="radio"/>	<input type="radio"/>
<b>Safety:</b> Which concept feels more safe to you, as a potential BRT rider?	<input type="radio"/>	<input type="radio"/>	<input type="radio"/>	<input type="radio"/>
<b>Comfort:</b> Which concept feels more comfortable for all users?	<input type="radio"/>	<input type="radio"/>	<input type="radio"/>	<input type="radio"/>



# Contact Information

Thank you for your input!



## *Project Websites*

- **Richmond Highway BRT (FCDOT)**  
[fairfaxcounty.gov/transportation/richmond-hwy-brt](http://fairfaxcounty.gov/transportation/richmond-hwy-brt)
- **Richmond Highway Corridor Improvements (VDOT)**  
[viriniadot.org/projects/northernvirginia/richmond\\_highway.asp](http://viriniadot.org/projects/northernvirginia/richmond_highway.asp)
- **ActiveFairfax Transportation Plan (FCDOT)**  
[fairfaxcounty.gov/transportation/bike-walk/activefairfax](http://fairfaxcounty.gov/transportation/bike-walk/activefairfax)
- **District Design Guidelines (Fairfax Co. DPD)**  
[fcrevite.org/richmond-highway/design-guidelines](http://fcrevite.org/richmond-highway/design-guidelines)



## *Richmond Highway BRT Email & Mailing Address*

- **Email:** [DOTBRT@fairfaxcounty.gov](mailto:DOTBRT@fairfaxcounty.gov)
- **Send comments/questions by mail to:** Fairfax County Department of Transportation, Richmond Highway BRT Project Manager, 4050 Legato Road, Fairfax, VA 22033.



To ask a question now, please use the WebEx “Q&A” feature:

- Open the “Q&A” window.
- Type in your question.

If calling in via telephone:

- Press \*3 to "raise your hand" and to be added to the queue.

**The station design survey is open until December 18:**  
[surveymonkey.com/r/RHBRT\\_web](https://surveymonkey.com/r/RHBRT_web)