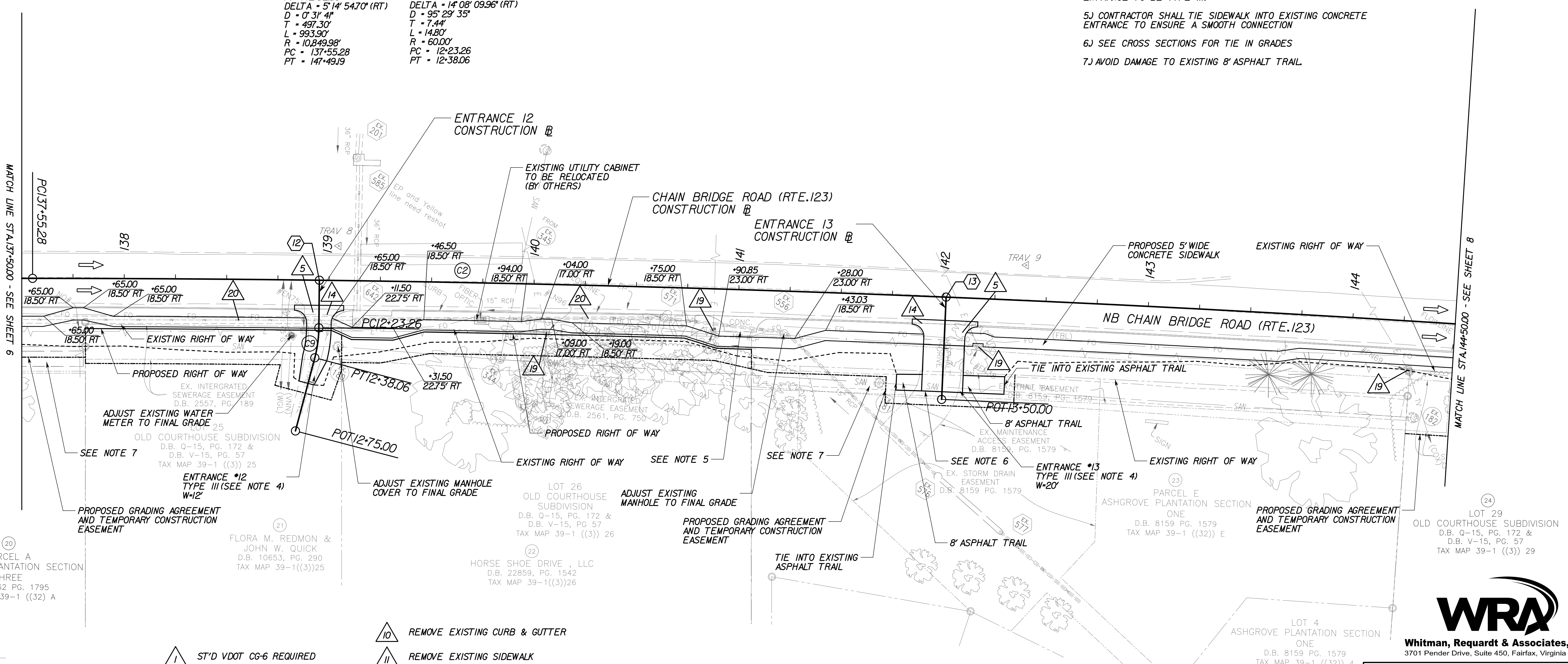


- NOTES:**
- 1) PROPOSED SIDEWALK SHALL DRAIN TOWARDS THE ROADWAY AT 2% UNLESS OTHERWISE NOTED
 - 2) GRADE AROUND SIDEWALK TO ENSURE POSITIVE DRAINAGE (2% MAX, 3% PREFERRED).
 - 3) CONTRACTOR RESPONSIBLE TO PROTECT FROM HARM OR REPLACE UNDER LICENSED LAND SURVEYOR ALL PROPERTY MONUMENTATION DISTURBED BY CONSTRUCTION.
 - 4) ALL PRIVATE ENTRANCES SHALL BE TYPE III TO THE RIGHT OF WAY. FOR EXISTING GRAVEL ENTRANCES, ENTRANCES TO BE TYPE I BEYOND RIGHT OF WAY TO TIE IN. FOR EXISTING ASPHALT ENTRANCES, ENTIRE ENTRANCE TO BE TYPE III.
 - 5) CONTRACTOR SHALL TIE SIDEWALK INTO EXISTING CONCRETE ENTRANCE TO ENSURE A SMOOTH CONNECTION
 - 6) SEE CROSS SECTIONS FOR TIE IN GRADES
 - 7) AVOID DAMAGE TO EXISTING 8' ASPHALT TRAIL

- (C2) Curve RTE123-2
 PI = 142+52.58
 DELTA = 5°14' 54.70" (RT)
 D = 0' 31' 41"
 T = 497.30'
 L = 993.90'
 R = 10,849.98'
 PC = 137+55.28
 PT = 147+49.19
- (C9) Curve ENTRANCE J2-1
 PI = 12+30.70
 DELTA = 14° 08' 09.96" (RT)
 D = 95° 29' 35"
 T = 7.44'
 L = 14.80'
 R = 60.00'
 PC = 12+23.26
 PT = 12+38.06



(20) PARCEL A
 ASH GROVE PLANTATION SECTION THREE
 D.B. 8962 PG. 1795
 TAX MAP 39-1 ((32) A

FLORA M. REDMON & JOHN W. QUICK
 D.B. 10653, PG. 290
 TAX MAP 39-1 ((3)) 25

LOT 26
 OLD COURTHOUSE SUBDIVISION
 D.B. Q-15, PG. 172 & D.B. V-15, PG. 57
 TAX MAP 39-1 ((3)) 26

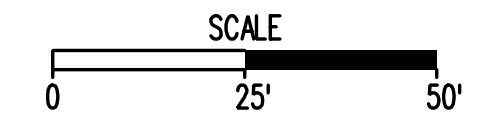
ASH GROVE PLANTATION SECTION ONE
 D.B. 8159 PG. 1579
 TAX MAP 39-1 ((32)) 4

LOT 29
 OLD COURTHOUSE SUBDIVISION
 D.B. Q-15, PG. 172 & D.B. V-15, PG. 57
 TAX MAP 39-1 ((3)) 29

- | | |
|--|--|
| (1) ST'D VDOT CG-6 REQUIRED | (10) REMOVE EXISTING CURB & GUTTER |
| (2) ST'D VDOT RADIAL CG-6 REQUIRED | (11) REMOVE EXISTING SIDEWALK |
| (3) ST'D VDOT CG-12 TYPE A REQUIRED | (12) ST'D VDOT CG-2 REQUIRED |
| (4) ST'D VDOT CG-12 TYPE B REQUIRED | (13) ST'D VDOT HR-1 TYPE III REQUIRED |
| (5) ST'D VDOT CG-9D REQUIRED | (14) REMOVE EXISTING ENTRANCE GUTTER |
| (6) REMOVE & RESET EXISTING FENCE ALONG PROPOSED RIGHT OF WAY LINE | (15) REMOVE AND RESET EXISTING GATE |
| (7) FULL DEPTH SAW CUT | (16) REMOVE DRAINAGE STRUCTURE |
| (8) REMOVE EXISTING PIPE | (17) VDOT MODIFIED CG-12 MEDIAN REQUIRED |
| (9) REMOVE EXISTING HANDRAIL | (18) REMOVE EXISTING WALL |
| | (19) GRADE AROUND EXISTING UTILITY POLE |
| | (20) EXISTING PIPE TO BE CLEANED |

Point #	Description	Northing	Easting	Elevation
8	TRAV 8	7018668.22	11841002.70	451.82
9	TRAV 9	7018833.70	11841294.62	470.25

ENTRANCE #12 CONSTRUCTION BASELINE	
POT 12+00.00 TO PC 12+23.26	S 30° 30' 26" E
PT 12+38.06 TO POT 12+75.00	S 16° 22' 16" E
ENTRANCE #13 CONSTRUCTION BASELINE	
POT 13+00.00 TO PC 13+50.00	S 28° 38' 26" E



REFERENCES
 (PROFILES, DETAIL & DRAINAGE DESCRIPTION SHEETS, ETC.)

Route 123 Profile	7A
Erosion & Sediment Control Plans	7B
Entrance Profile	9(3)

EMERGENCY POLICE - FIRE - RESCUE 911

FAIRFAX COUNTY, VIRGINIA
 DEPARTMENT OF PUBLIC WORKS AND ENVIRONMENTAL SERVICES-UTILITIES DESIGN & CONSTRUCTION DIVISION
 12000 GOVERNMENT CENTER PARKWAY, SUITE 463 FAIRFAX, VA., 22035-0052

OFFICE OF CAPITAL FACILITIES
 703-324-5800

CHAIN BRIDGE ROAD WALKWAY FROM NIBLICK DRIVE TO HORSE SHOE DRIVE PLAN SHEET

PROJECT NO: 2G40-088-014

SCALE 1"=25'	DESIGNED: JRT	SHEET 7
	DRAFTED: LTW	
	CHECKED: RBH	

FUND # 400-C40011

PRE-FINAL SUBMISSION

THESE PLANS ARE UNFINISHED AND UNAPPROVED AND ARE NOT TO BE USED FOR ANY TYPE OF CONSTRUCTION OR THE ACQUISITION OF RIGHT OF WAY.



Whitman, Requardt & Associates, LLP
 3701 Pender Drive, Suite 450, Fairfax, Virginia 22030