



TRANSFORM 66
OUTSIDE the Beltway

VDOT | DRPT

Transform 66 Outside the Beltway

Fairfax County Transportation
Advisory Commission

September 17, 2019



I-66 Outside the Beltway Project

Two express lanes in each direction

- HOV-3+ and buses travel free
- Non-HOV tolled
- Congestion-based tolls

Three regular lanes in each direction

- Open to all traffic
- No tolls
- Ramp-to-ramp connections between interchanges (auxiliary lanes)
- Safety, interchange and operational improvements

New transit service and other multimodal improvements

- High-frequency, fast and reliable bus service during extended peak periods
- Park and ride facilities
- Transportation Demand Management (TDM) strategies
- Bicycle and pedestrian trail and improvements



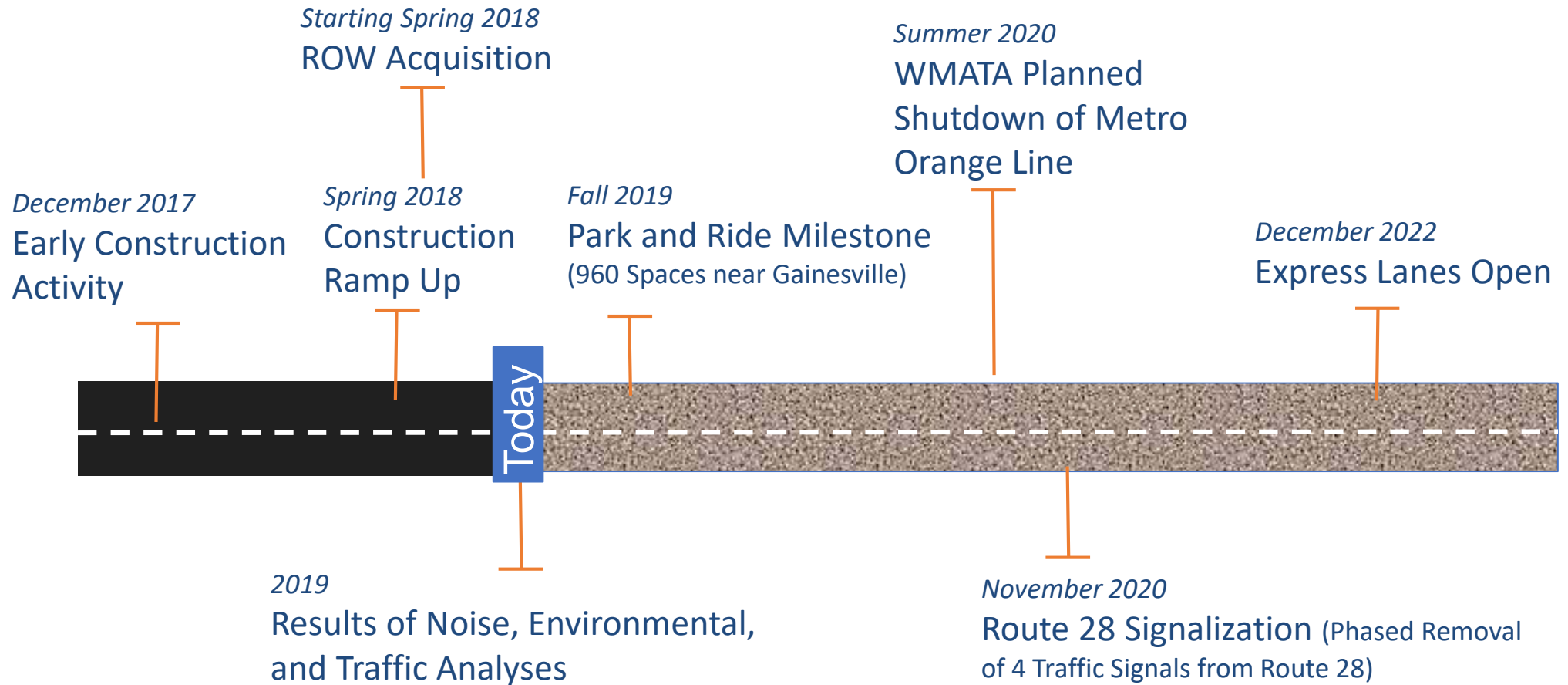
- I-66 Express Mobility Partners (EMP) is VDOT's partner
- Best value for Virginia: I-66 EMP providing \$3.5 billion for project:
 - *\$2.3 billion for highway construction*
 - *\$579 million for immediate transportation needs adjacent to I-66 corridor*
 - *\$850 million to expand transit and \$350 million for other projects over life of the contract*
- EMP will operate roadway for 50 years; VDOT retains ownership



TRANSFORM 66
OUTSIDE the Beltway

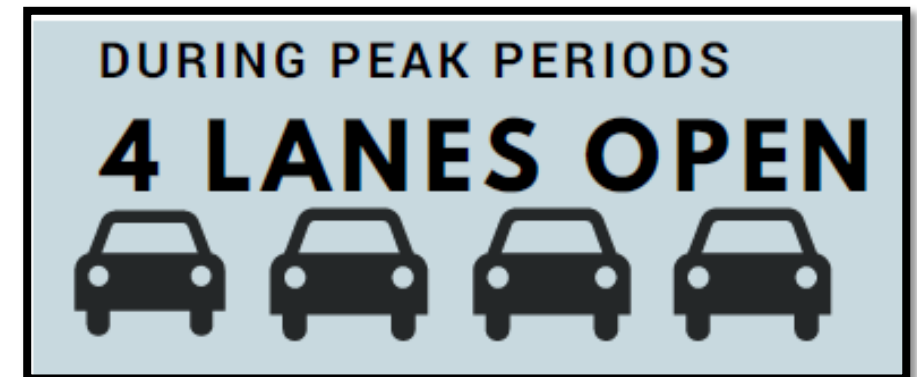


Project Roadmap



Construction is underway throughout the corridor:

- Long-term lane shifts and traffic pattern changes
- Tree removal where necessary
- Installation and maintenance of erosion and sediment controls
- Utility relocation
- Grading and drainage
- Work on new E.C. Lawrence Park Access Road
- Bridge foundation work at Compton Road, Route 28, Poplar Tree Road, Route 123, Gallows Road and I-495 interchanges
- Bridge beam work at Route 28 interchange
- Bridge superstructure work at Bull Run Drive and Sudley Road
- Pedestrian box culvert construction at Route 123
- Retaining walls along I-66



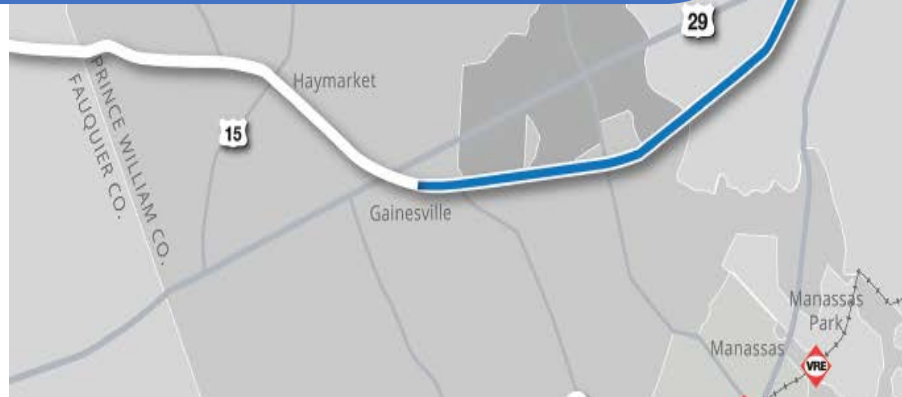
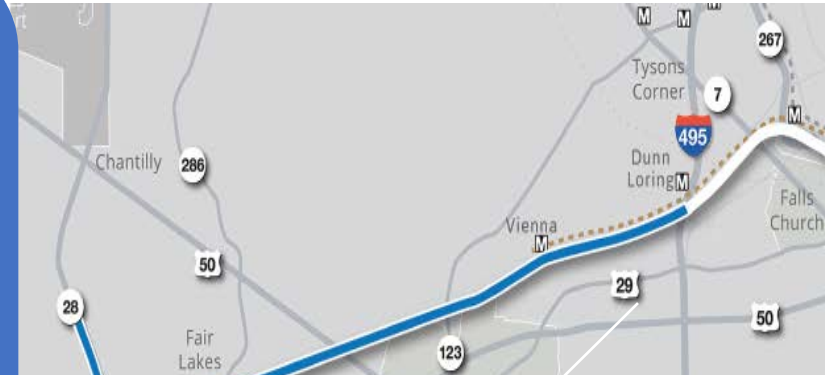


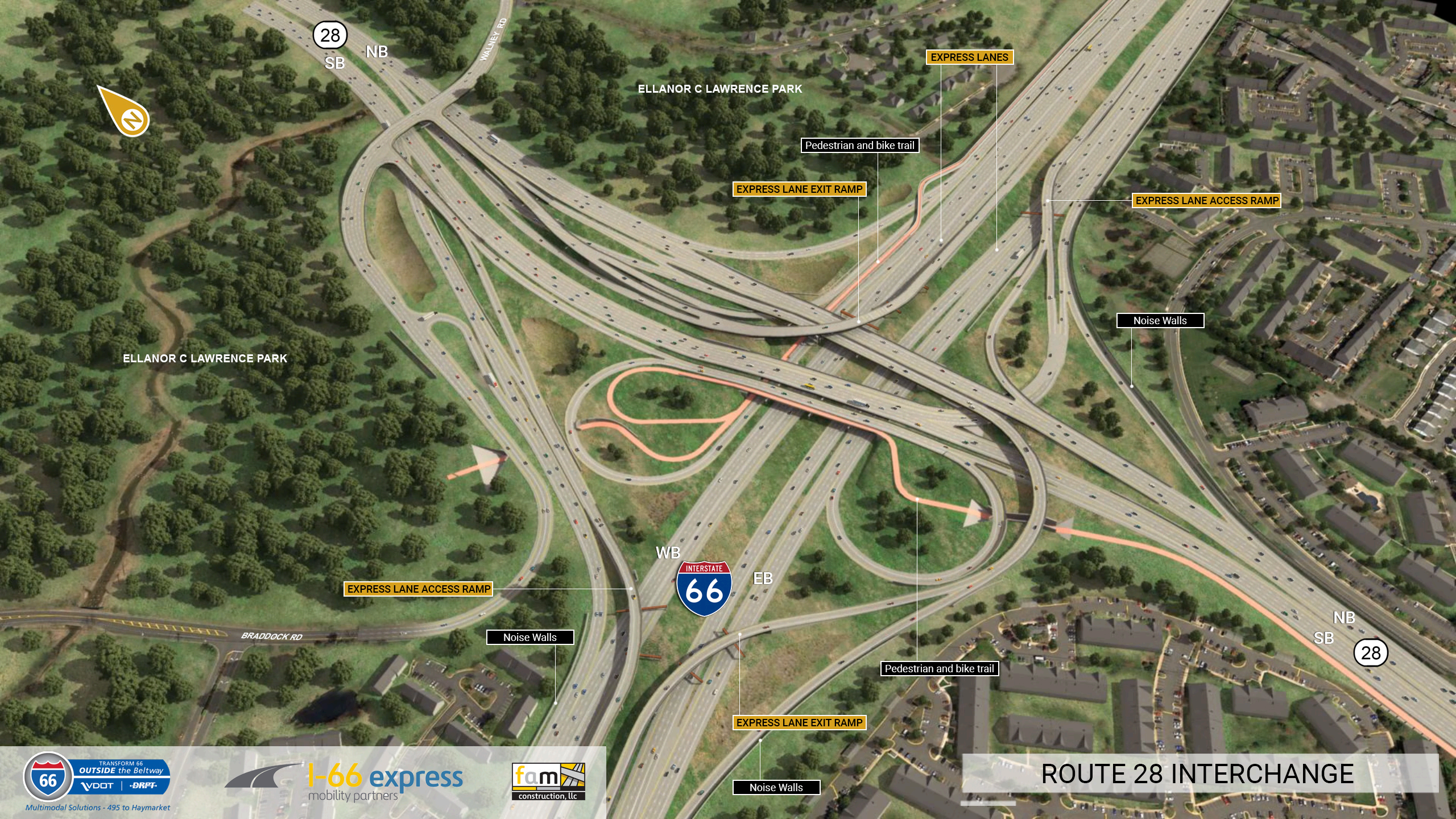
TRANSFORM 66
OUTSIDE the Beltway



Route 28 Interchange and Corridor Improvements

- Addition of 4th lane from I-66 Interchange to Westfields Blvd.
- Removal of 4 traffic signals along Route 28 between E.C. Lawrence Park and Route 29
- Reconnection of Braddock Road and Walney Road with overpass over Route 28
- Redesign of Route 28 Interchange
- First bridge beams being set over I-66 and Route 28 for new ramps and bridges inside interchange starting September 2019





28

SB

NB

WALLEY RD

ELLANOR C LAWRENCE PARK

EXPRESS LANES

Pedestrian and bike trail

EXPRESS LANE EXIT RAMP

EXPRESS LANE ACCESS RAMP

Noise Walls

ELLANOR C LAWRENCE PARK

WB



EB

EXPRESS LANE ACCESS RAMP

Noise Walls

BRADDOCK RD

NB

SB

28

Pedestrian and bike trail

EXPRESS LANE EXIT RAMP

Noise Walls



Multimodal Solutions - 495 to Haymarket

I-66 express
mobility partners



ROUTE 28 INTERCHANGE



TRANSFORM 66
OUTSIDE the Beltway



E.C. Lawrence Park Access Road

- New E.C Lawrence Park access road with entrance off of Stonecroft Blvd to open Fall 2019
- Park access point shifts off of Route 28, freeing traffic along Route 28 with planned removal of current traffic signal
- Building bridge across Route 28, connecting Poplar Tree Rd and Stonecroft Blvd. Bridge planned to open November 2020





TRANSFORM 66
OUTSIDE the Beltway



Route 123 Interchange

- Constructing new bridges and ramps
- Constructing new box culverts for future grade-separated shared-use path
- Temporary traffic pattern changes to allow for demolition of existing and construction of new ramps coming in November 2019
 - I-66 West to Route 123 North
 - I-66 West to Route 123 South
 - I-66 East to Route 123 North
 - Route 123 South to I-66 East





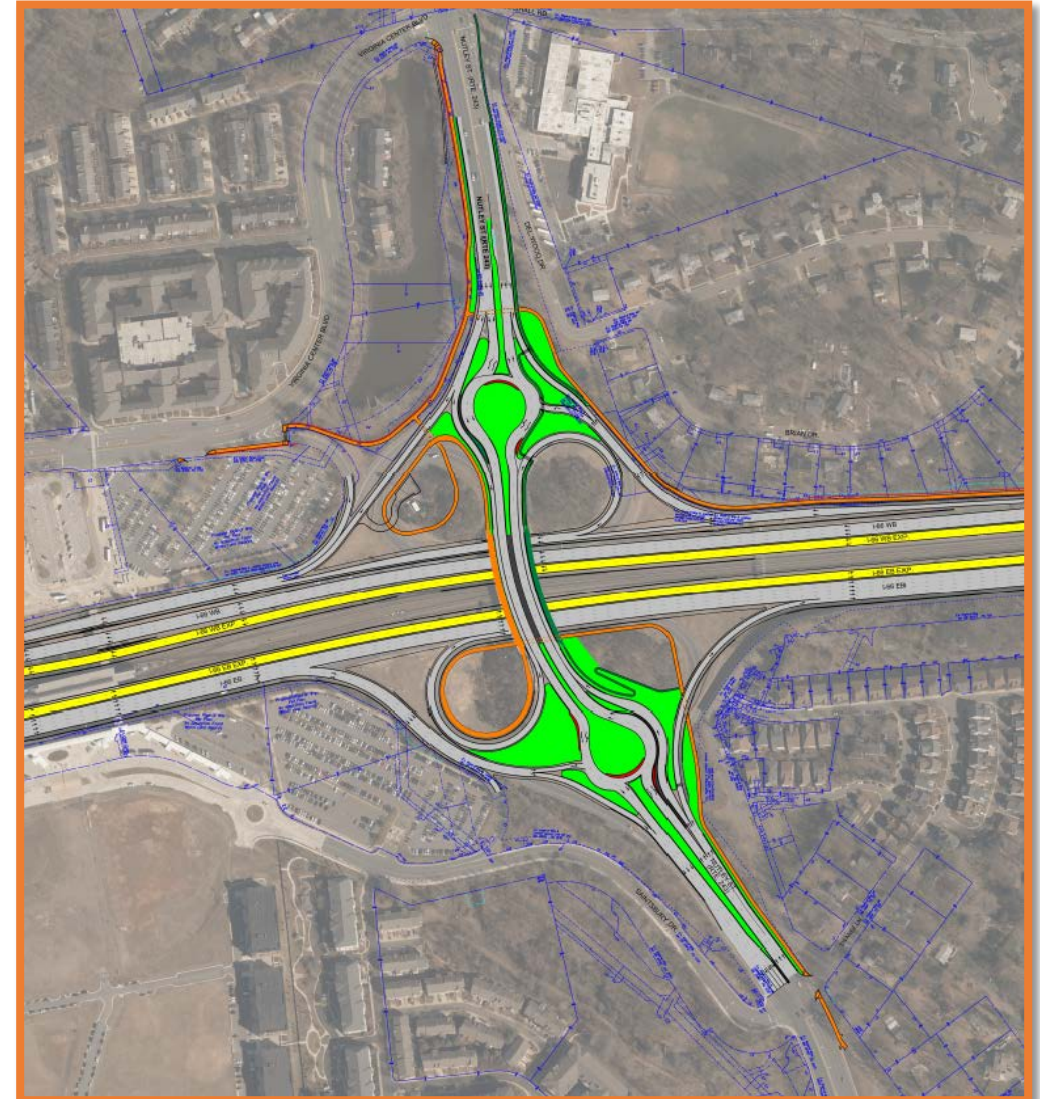
TRANSFORM 66
OUTSIDE the Beltway
VDOT | DRPT

Nutley Street Interchange Design

Double roundabout

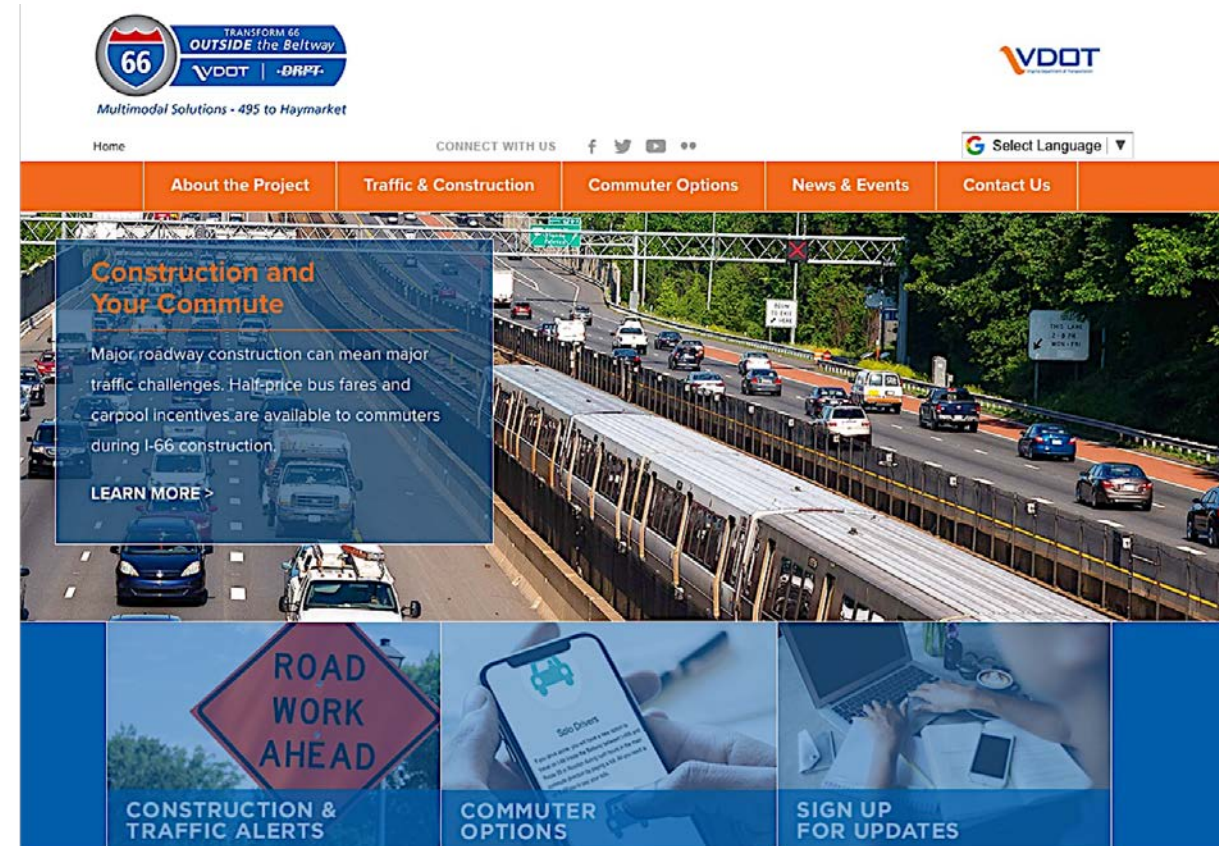
Features of improved design:

- Provide safer, more efficient travel for vehicles entering and exiting I-66 East and West
- Improve safety for vehicles and pedestrians traveling on Nutley Street
- Eliminates need for additional traffic signals along Nutley Street
- Connect the new grade-separated shared-use path with planned bicycle and pedestrian improvements around the Vienna/Fairfax-GMU Metrorail station and a shared-use path being built into the Town of Vienna



Project website featuring easy-to-access information:

- Construction activities
- Lane closures and traffic changes
- Weekly lane closure look-ahead report
- Direct link to Virginia 511 for real-time traffic conditions and work zones
- Alternative commute information and new commute options
- Project interactive map showing ultimate improvements
- Opportunity to sign-up for regular project updates and news
- Free I-66 Express Mobility App on Google and Apple with construction updates and maps





TRANSFORM 66
OUTSIDE the Beltway

VDOT | DRPT

Programs to keep commuters moving, reduce number of single-occupant drivers, and promote use of transit and alternative travel strategies during construction

I-66 Outside the Beltway:

- 50% fare subsidies on local commuter buses
- \$100 incentives for new HOV-3+ carpoolers
- New van pool riders pay subsidized rate of \$150 per month for the first 12 months
- Up to \$10,000 for new telework programs



Commuter Bus, Carpool, Vanpool, Telework.
You've got options.





TRANSFORM 66
OUTSIDE the Beltway

VDOT | DRPT



THANK YOU!
STAY INFORMED – Sign Up for Alerts @
[Transform66.org](https://transform66.org)

Help Spread the Word!