



Dulles Corridor Metrorail Project

Silver Line Phase 2 Implementation

Board Transportation Committee Update

May 8, 2018

Mark Canale, Fairfax County Project Manager
Fairfax County Department of Transportation

Project Status

Phase 1

- Old Meadow Road Realignment – 90% design complete.
 - Construction completion scheduled for the end of 2018.
- VDOT punch list ongoing – MWAA and Bechtel to complete
 - Work on bus bays at Spring Hill and McLean starting May/June
- Phase 1 close out - \$2.982B (no change)

Phase 2

- Overall Phase 2 – 80% complete
- Package A (Rail line, system, and stations) – 80%
 - Sections of the third rail have been energized.
- Package B (Rail yard at Dulles) – 81%
- Contractual Substantial Completion – August 2019
 - WMATA Board to establish Revenue Operations Date

Phase 2 – Station Construction

- *Reston Town Center Station* – Mechanical/electrical/plumbing rough-in, stormwater facilities, and pavilion area work ongoing.
- *Herndon Station* – Electrical installation, work on the station vault roof, and continued work on north and south pavilions.
- *Innovation Station* – Masonry, electrical and plumbing, pavilion detailing, and pedestrian bridge touch-up painting.



Phase 2 – Station Construction

- *Dulles Airport Station* – Mechanical/electrical/plumbing work, tunnel tie-in work ongoing.
- *Loudoun Gateway Station* – Precast erection, foundation and support walls, pedestrian bridge assembled, concrete walls and decks for north pavilion.
- *Ashburn Station* - Station concrete work, precast erection, pavilion work, and pedestrian bridges erected.



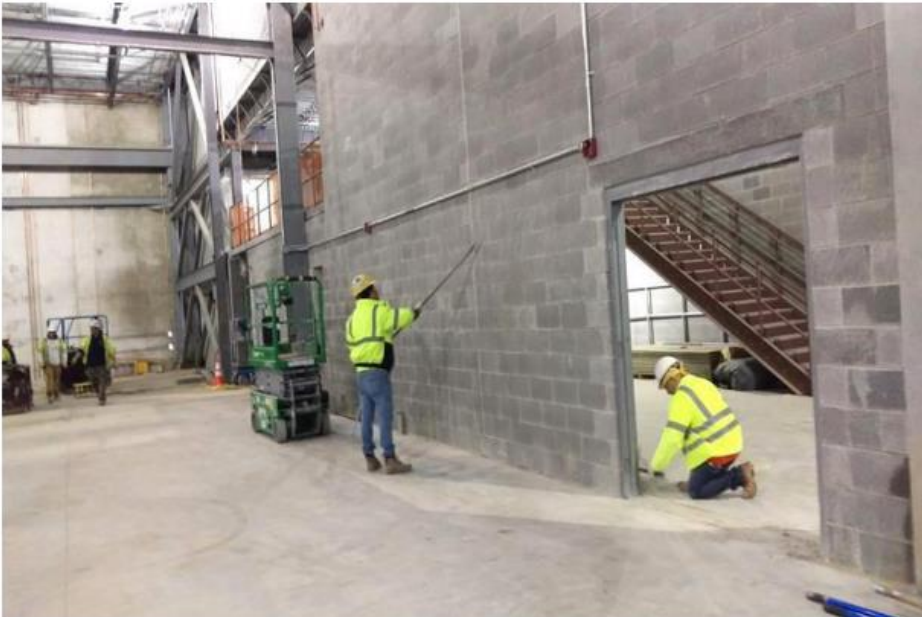
Phase 2 – Aerial, Track, Utilities, Systems

- Aerial guideway crew welding girders and clean up work
- Utility relocation ongoing
- Traction Power Feeders – installation of manholes and duct bank to tie into Traction Power Substations (TPSS) and Tie Breaker Stations (TBS),
- Ground grids being installed to TPSS and TBS, continue 34.5kV cable installation and conduit installation
- Section of 34.5kV energized between TPSS buildings at Herndon, Innovation, and Dulles Airport.



Phase 2 – Rail Yard at Dulles Airport

- Interior work for Service and Inspection Building, Maintenance Way Building, and Transit Police Building. Construction continues at Train Wash Facility, Warehouse Facility, and Vehicle Storage Facility.
- Ongoing – Third rail installation, utility installation, duct bank, storm lines, sanitary lines, water lines, site lighting, and site road work.



Phase 2 – Cost Summary

- Budget

- Total Budget \$2.778B
- Total Forecast \$2.778B
- Total Expenditures \$1.680B

- Contingency Utilization

- Total Contingency \$551.5M
- Total Contingency Utilized \$201.9M
- Remaining Contingency \$349.6M

Herndon Metrorail Garage

- Total Project Estimate: \$44.5M
- Construction Progress: 79% complete
- Garage Bridge Erection: Completed Nov 2017
 - Construction pricing for existing garage repair work.

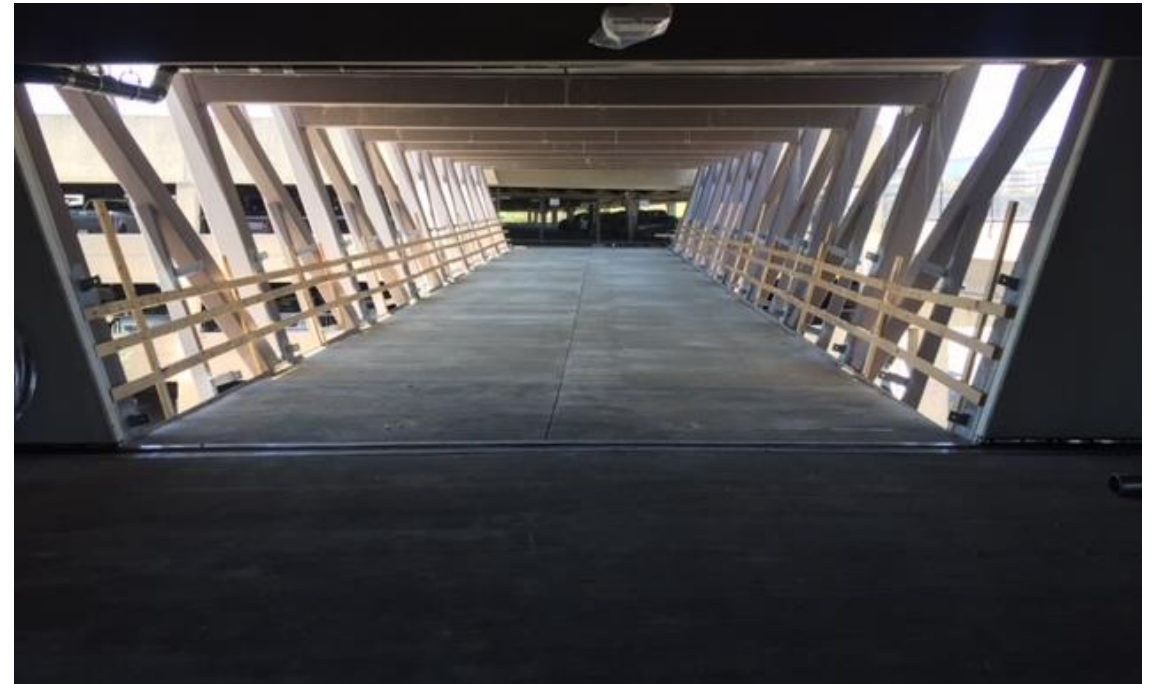
Schedule

- Construction Award: October 2016
- Construction (new garage): November 2016 – March 2019
- Construction (existing garage): February 2019 – March 2019
- Ready for Occupancy: April 2019

Herndon Metrorail Garage



Herndon Garage Interior Construction



Innovation Metrorail Garage

- Total Project Estimate: \$52 million
- Construction Progress: 40% complete
- Precast Fabrication: October 2017
- Precast Erection: April 2018
 - Pier drilling complete and precast erection started April 5, 2018.

Schedule

- Construction Award: March 2017
- Construction: April 2017
- Ready for Occupancy: April/May 2019

Innovation Metrorail Garage

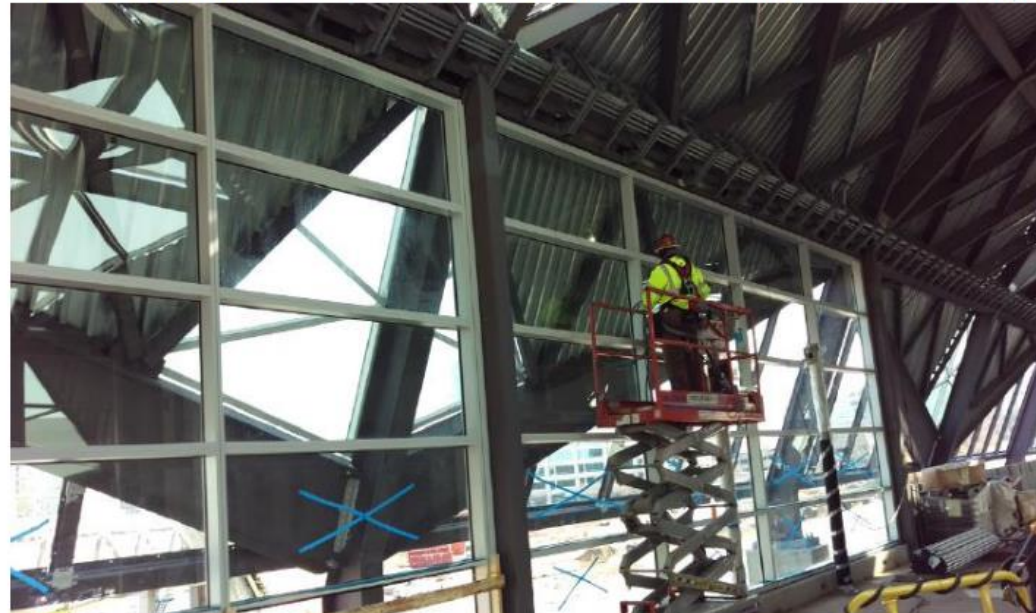


Reston Town Center Station



Station Pavilion

Reston Station Mezzanine Glass Wall and Vault Ceiling Framing



Herndon Station



Installing Ballasted Track Through Herndon Station



Herndon South Pavilion



Innovation Center Station



Innovation Center Station

Innovation South Pavilion



Excavate and Form Innovation North Sound Wall Foundations



Dulles Airport Station

Dulles Station Platform, Canopy Roof and Guideway



Prepare for Concrete Pour of Walkway in Pedestrian Tunnel at Dulles Station



Aerial Guideway Track Ready For Systems Installation



Rail Yard Dulles Airport

Installing Bumping Posts at the TB



Boiler Installation in the SIB



SIB High Bay Area



QUESTIONS?