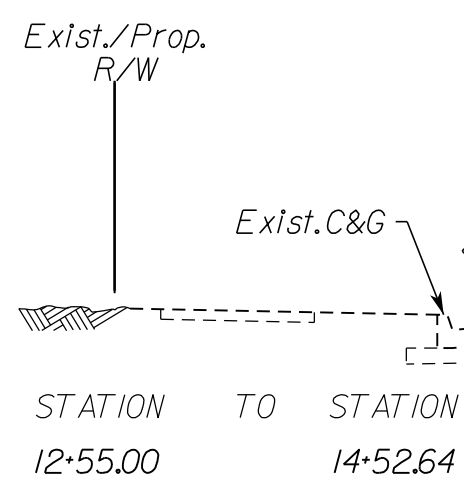
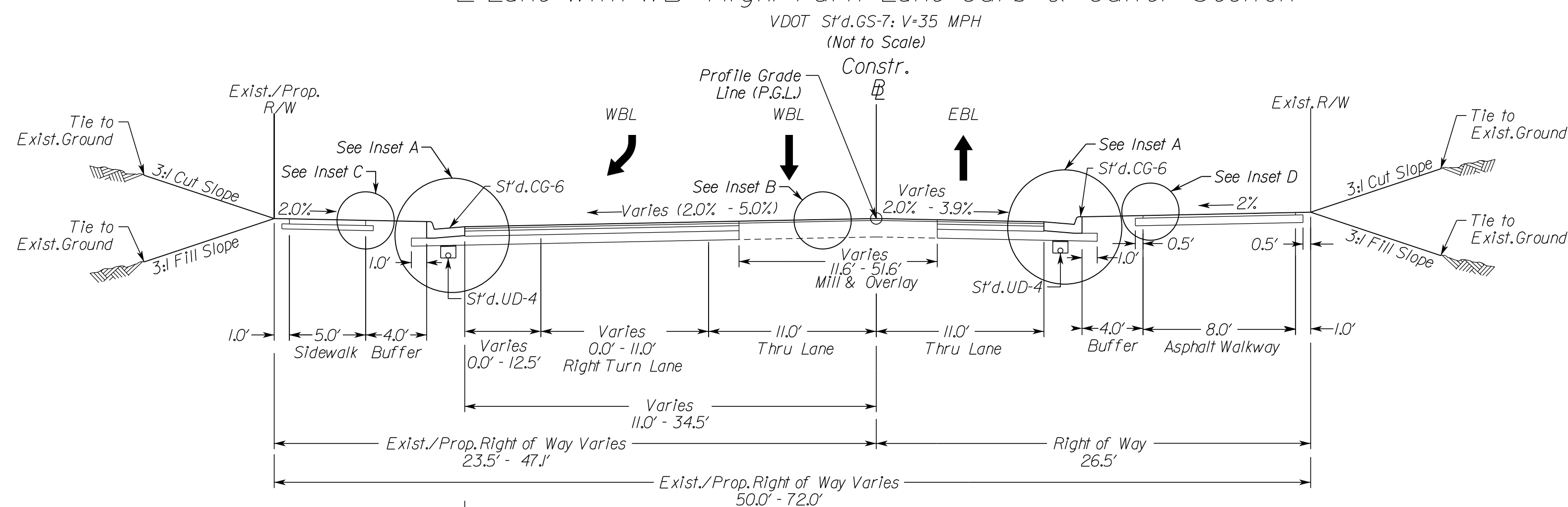
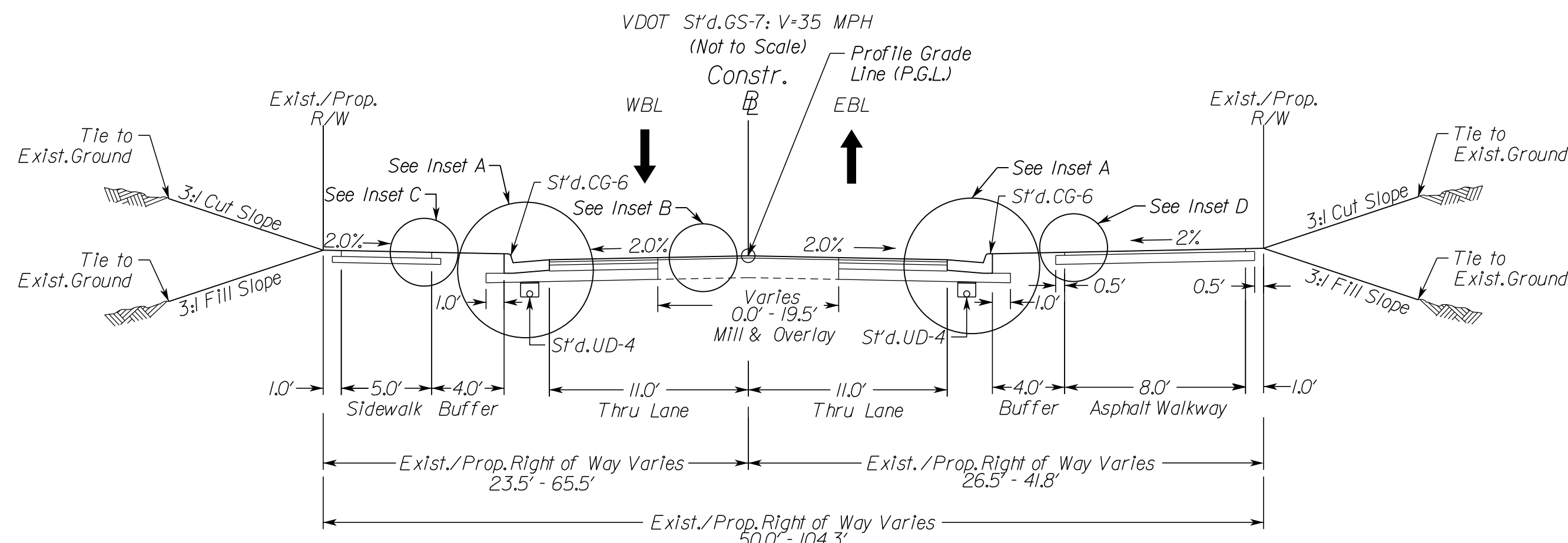


Rte. 652, Burke Road 2-Lane with WB Right Turn Lane Curb & Gutter Section



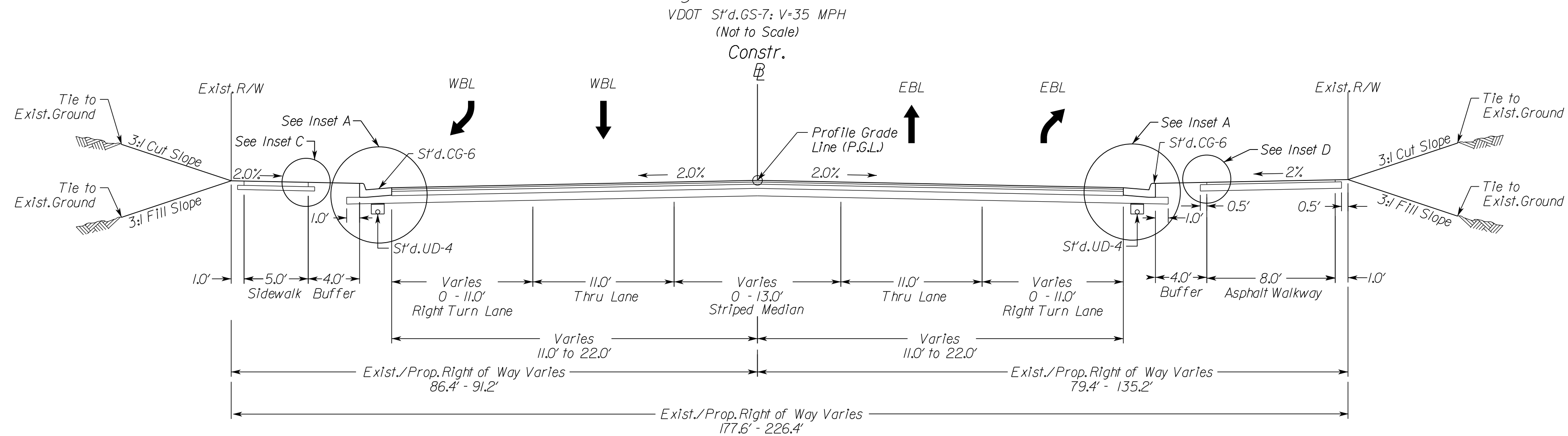
LOCATION	STATION	TO	STATION
Burke Rd.	12+55.00		15+87.34

Rte. 652, Burke Road 2-Lane Undivided Curb & Gutter Section

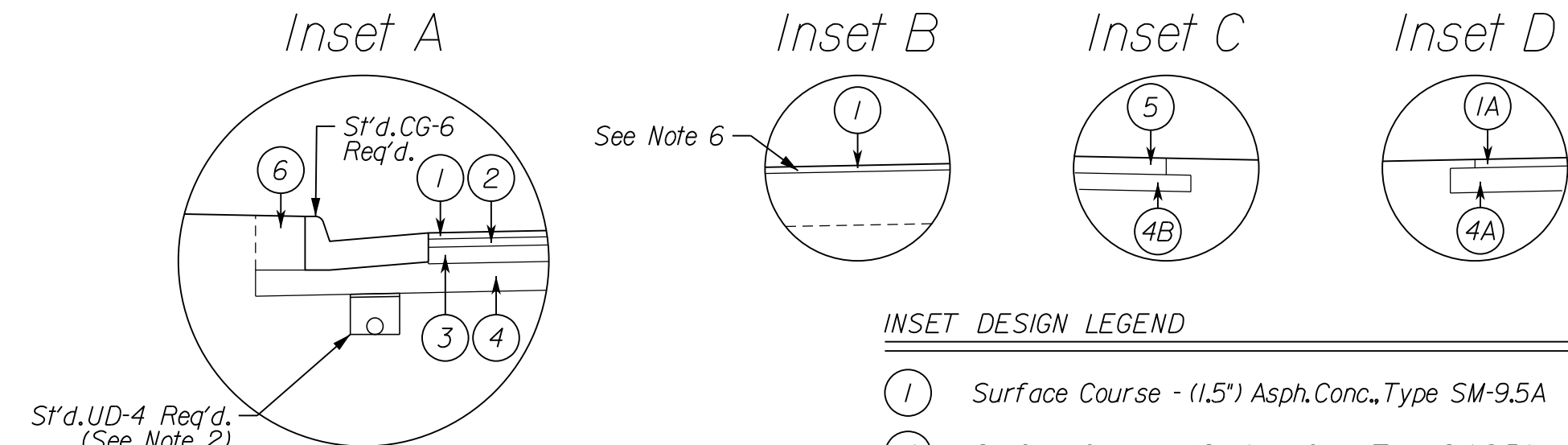


LOCATION	STATION	TO	STATION
Burke Rd.	15+87.34		20+71.62

Rte. 652, Burke Road 2-Lane with EB & WB Right Turn Lanes Curb & Gutter Section

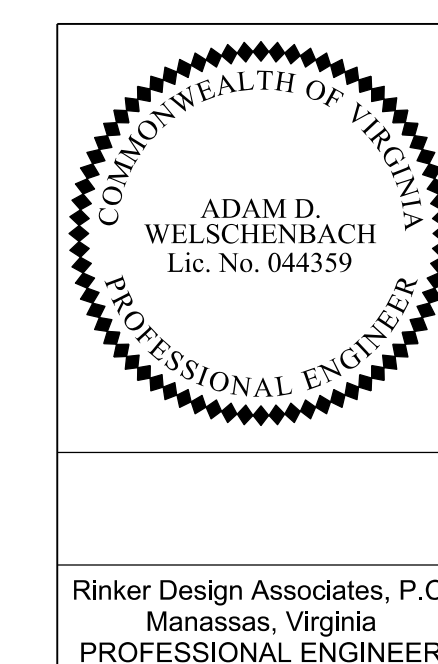


LOCATION	STATION	TO	STATION
Burke Rd.	20+71.62		23+15.37



- TYPICAL SECTION NOTES**
- Pavement widening to be performed in accordance with VDOT S't.d.WP-2
 - S't.d. UD-4 Req'd., see plan sheets for detailed locations.
 - S't.d. UD-2 Req'd., see plan sheets for detailed locations.
 - S't.d. CD-2 Req'd., see plan sheets for detailed locations.
 - Contractor to provide positive drainage for subgrade course 2/B for outside areas in shoulders and super-elevated sections.
 - Milling of the existing pavement should consist of 1.5" Minimum mill prior to any resurfacing/build-up. In areas of build-up, IM-19.0A shall be placed up to 1.5" below Final grade.
 - See Sheet 2A(3) for Unsuitable Material Recommendations.

- INSET DESIGN LEGEND**
- ① Surface Course - (1.5") Asph. Conc., Type SM-9.5A
 - ①A Surface Course - (2") Asph. Conc., Type SM-9.5A
 - ② Intermediate Course - (2") Asph. Conc., Type IM-19.0A
 - ③ Base Course - (4") Asph. Conc., Type BM-25.0A
 - ④ Subbase Course - (8") Aggr. Base Material, Type I, Size No. 2/B
 - ⑥ Aggr. Base Material, Type I, Size No. 2/B extended 6" on either side of the surface
 - ④A Aggr. Base Material, Type I, Size No. 2/B extended 4" on either side of the surface
 - ⑤ (4") Hydraulic Cement Conc. Class A4
 - ⑥ Regular Fill Material to be compacted in accordance with VDOT Road and Bridge Specifications.



EMERGENCY POLICE - FIRE - RESCUE 911			
FAIRFAX COUNTY, VIRGINIA			
DEPT. OF PUBLIC WORKS & ENVIRONMENTAL SERVICES - UTILITIES DESIGN & CONSTRUCTION DIVISION			
12000 GOVERNMENT CENTER PARKWAY, SUITE 463 FAIRFAX, VA., 22035-0052			
OFFICE OF CAPITAL FACILITIES 703-324-5800		TAX MAP 78-4	
BURKE ROAD (ROUTE 652)			
TYPICAL SECTIONS			
SPRINGFIELD DISTRICT, FAIRFAX COUNTY, VIRGINIA			
CONTRACT NO. CN-...		PROJECT NO. 2640-087-003	
SCALE	DESIGNED BY: CMW	SHEET	
HORIZ - N/A	DRAFTED BY: BAM, JRB	2A	
VERT - N/A	CHECKED BY: ADW		
DESCRIPTION	BY	APPROVED	DATE