

PROJECT MANAGER: Fairfax Co. Dept. of Transportation, Robert Ayers, (703) 877-5735
 SURVEYED BY, DATE: Fairfax County, LSB, Vickie Anglin, L.S., (703) 324-5151, June, 2019
 DESIGN BY: Rinker Design Associates, P.C., Adam Welschenbach, P.E., (703) 368-7373
 SUBSURFACE UTILITY BY, DATE: TBD

PAVEMENT LEGEND

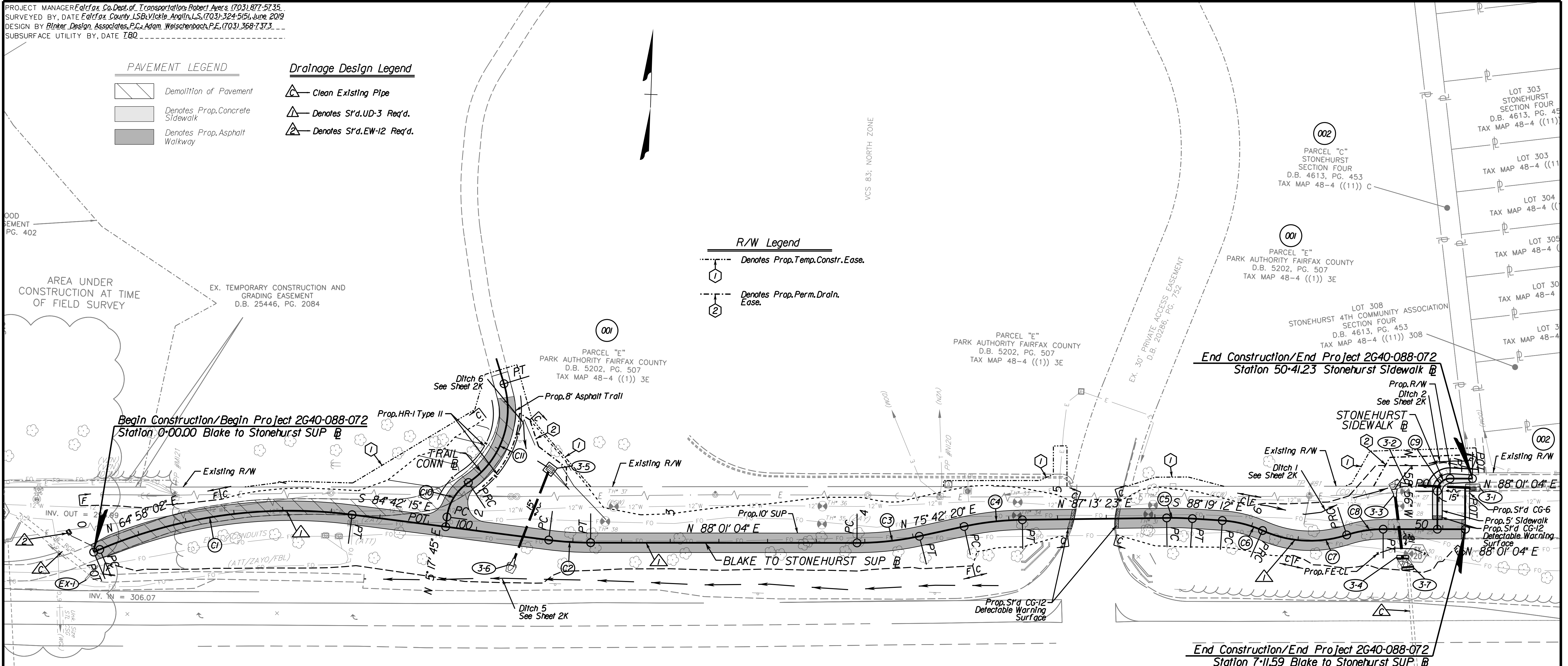
- Demolition of Pavement
- Denotes Prop. Concrete Sidewalk
- Denotes Prop. Asphalt Walkway

Drainage Design Legend

- Clean Existing Pipe
- Denotes S1'd. UD-3 Req'd.
- Denotes S1'd. EW-12 Req'd.

R/W Legend

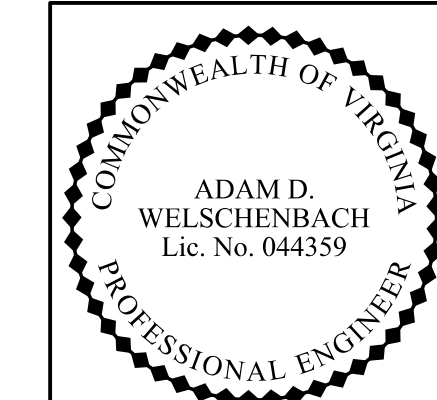
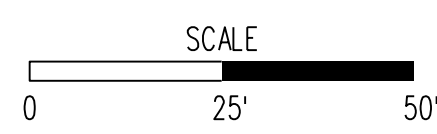
- Denotes Prop. Temp. Constr. Ease.
- Denotes Prop. Perm. Drain. Ease.



<p>C1 Curve BLK_STN_SUPI_3 PI • 0+71.15 DELTA • 30°19' 43.15" (RT) D • 22' 55" 06" T • 67.76' L • 132.33' R • 250.00' PC • 0+03.39 PT • 1+35.73 V • 18mph S.E. • 2%</p>	<p>C2 Curve BLK_STN_SUPI_6 PI • 2+48.37 DELTA • 7°16' 40.95" (LT) D • 33' 42" 12" T • 10.81' L • 21.59' R • 170.00' PC • 2+37.55 PT • 2+59.15 V • 18mph S.E. • 2%</p>	<p>C3 Curve BLK_STN_SUPI_9 PI • 4+12.14 DELTA • 12°18' 43.86" (LT) D • 38' 11" 50" T • 16.18' L • 32.23' R • 150.00' PC • 3+95.96 PT • 4+28.19 V • 18mph S.E. • 2%</p>	<p>C4 Curve BLK_STN_SUPI_12 PI • 4+66.88 DELTA • 11°31' 03.30" (RT) D • 38' 11" 50" T • 15.13' L • 30.15' R • 150.00' PC • 4+51.75 PT • 4+81.90 V • 18mph S.E. • 2%</p>	<p>C5 Curve BLK_STN_SUPI_15 PI • 5+62.64 DELTA • 4°27' 24.70" (RT) D • 33' 42" 12" T • 6.62' L • 13.22' R • 170.00' PC • 5+56.03 PT • 5+69.25 V • 18mph S.E. • 2%</p>
<p>C6 Curve BLK_STN_SUPI_18 PI • 5+95.47 DELTA • 20°27' 26.32" (RT) D • 95' 29' 35" T • 10.83' L • 21.42' R • 60.00' PC • 5+84.64 PT • 6+06.07 V • 18mph S.E. • 2%</p>	<p>C7 Curve BLK_STN_SUPI_19 PI • 6+29.27 DELTA • 42°16' 59.87" (LT) D • 95' 29' 35" T • 23.20' L • 44.28' R • 60.00' PC • 6+06.07 PT • 6+50.35 V • 18mph S.E. • 2%</p>	<p>C8 Curve BLK_STN_SUPI_20 PI • 6+59.94 DELTA • 18°09' 49.41" (RT) D • 95' 29' 35" T • 9.59' L • 19.02' R • 60.00' PC • 6+50.35 PT • 6+69.37 V • 18mph S.E. • 2%</p>	<p>C9 Curve STONE_SW_3 PI • 50+26.00 DELTA • 90°00' 00.00" (RT) D • 88' 28' 25" T • 6.50' L • 10.21' R • 6.50' PC • 50+19.50 PT • 50+29.71 V • 18mph S.E. • 2%</p>	<p>C10 Curve TRAILCONN_3 PI • 100+16.52 DELTA • 49°16' 27.31" (RT) D • 229' 10' 59" T • 11.47' L • 21.50' R • 25.00' PC • 100+05.06 PT • 100+26.56 V • 18mph S.E. • 2%</p>
<p>C11 Curve TRAILCONN_4 PI • 100+48.18 DELTA • 5°18' 58.34" (LT) D • 127' 19' 26" T • 21.62' L • 40.30' R • 45.00' PC • 100+26.56 PT • 100+66.86 V • 18mph S.E. • 2%</p>				

Underdrain Summary

Baseline	Station	to	Station	UD-3	Outlet Pipe	EW-12	Remarks
Blake SUP	5+07.76	to	-0+07.53	505	18	1	
Blake SUP	5+29.91	to	6+75.87	143	7		Tie to Structure 3-2



EMERGENCY POLICE - FIRE - RESCUE 911			
FAIRFAX COUNTY, VIRGINIA			
DEPT. OF PUBLIC WORKS & ENVIRONMENTAL SERVICES - UTILITIES DESIGN & CONSTRUCTION DIVISION 12000 GOVERNMENT CENTER PARKWAY, SUITE 463 FAIRFAX, VA., 22035-0052			
OFFICE OF CAPITAL FACILITIES 703-324-5800		ROUTE 50 WALKWAY IMPROVEMENTS BLAKE TO STONEHURST	
PLAN SHEET			
PROVIDENCE DISTRICT, FAIRFAX COUNTY, VIRGINIA			
CONTRACT NO. CN-1111		PROJECT NO. 2640-088-072	
SCALE	DESIGNED BY: ADM, P.E.	SHEET	
HORIZ: N/A	DRAFTED BY: JRB	3	
VERT: N/A	CHECKED BY: ADM, P.E.		
DESCRIPTION	BY	APPROVED	DATE

Rinker
 Design Associates, P.C.
 Civil Engineering, Surveying, Environmental
 Right of Way Services
 11000 Government Center
 Manassas, VA 20108
 Phone: (703) 368-7373
 Fax: (703) 368-7373
 www.rinker.com