

PROJECT MANAGER: JOHN DRESSER, P.E. (703) 877-5812
 SURVEYED BY: DATE FAIRFAX COUNTY (703) 324-5151 JULY 2019
 DESIGN BY: WHITMAN, REQUARDT & ASSOCIATES, LLP (703) 293-9717
 SUBSURFACE UTILITY BY: DATE ACCUMARK (800) 542-2990 OCTOBER 2019

TAX MAP 48-1 ((17)) C

PHASE ONE
 D.B. 8801, PG. 365
 TAX MAP 48-4 ((21)) E

VA STATE GRID NORTH
 MAD 85; NORTH ZONE

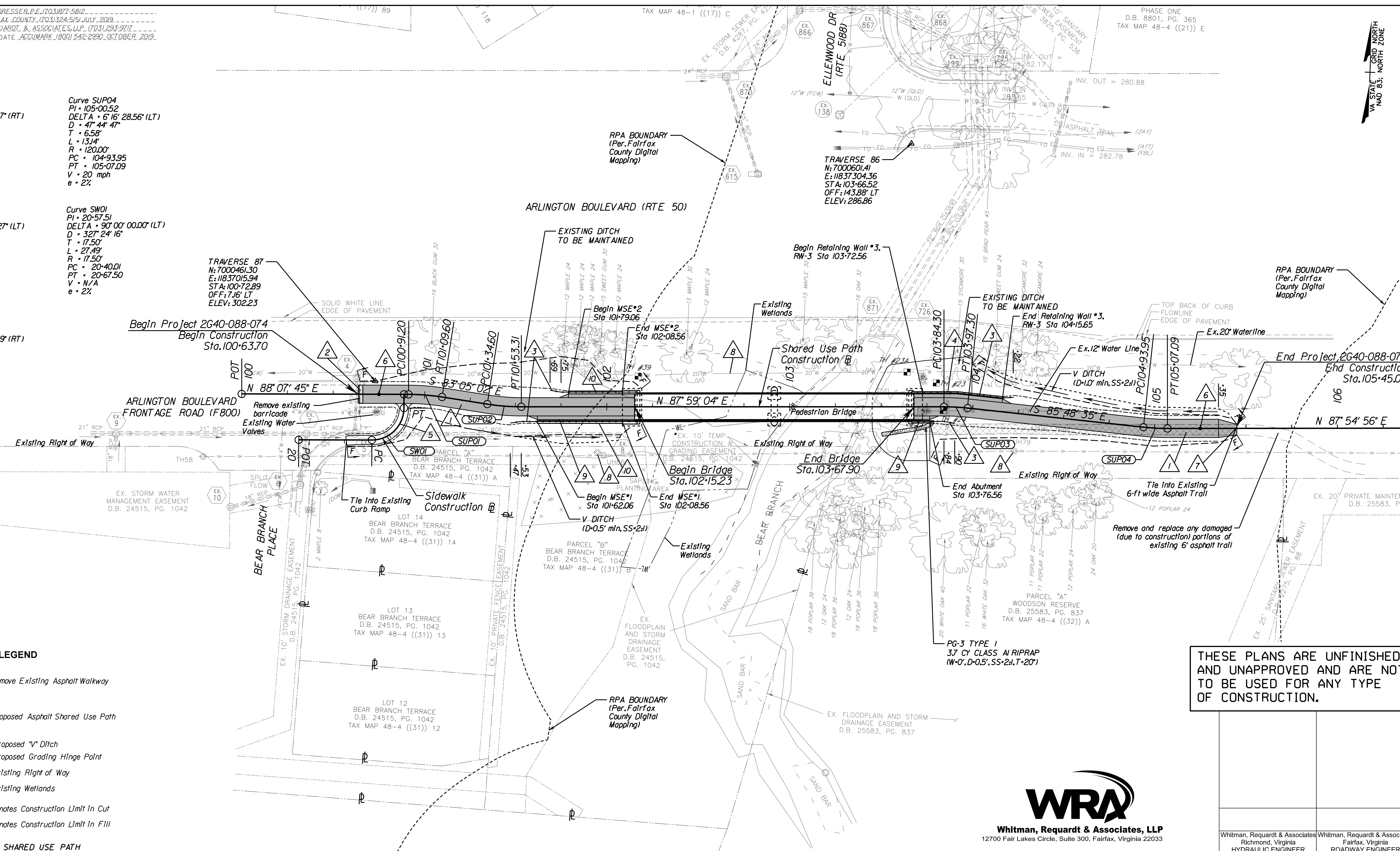
Curve SUP01
 PI = 101+00.42
 DELTA = 8° 47' 13.57" (RT)
 D = 47' 44" 47"
 T = 9.22'
 L = 18.40'
 R = 120.00'
 PC = 100+91.20
 PT = 101+09.60
 V = 20 mph
 e = 2%

Curve SUP04
 PI = 105+00.52
 DELTA = 6° 16' 28.56" (LT)
 D = 47' 44" 47"
 T = 6.58'
 L = 13.14'
 R = 120.00'
 PC = 104+93.95
 PT = 105+07.09
 V = 20 mph
 e = 2%

Curve SUP02
 PI = 101+43.98
 DELTA = 8° 55' 54.27" (LT)
 D = 47' 44" 47"
 T = 9.37'
 L = 18.71'
 R = 120.00'
 PC = 101+34.60
 PT = 101+53.31
 V = 20 mph
 e = 2%

Curve SW01
 PI = 20+57.51
 DELTA = 90° 00' 00.00" (LT)
 D = 327' 24" 16"
 T = 17.50'
 L = 27.49'
 R = 17.50'
 PC = 20+40.01
 PT = 20+67.50
 V = N/A
 e = 2%

Curve SUP03
 PI = 103+90.81
 DELTA = 6° 12' 20.89" (RT)
 D = 47' 44" 47"
 T = 6.51'
 L = 13.00'
 R = 120.00'
 PC = 103+84.30
 PT = 103+97.30
 V = 20 mph
 e = 2%



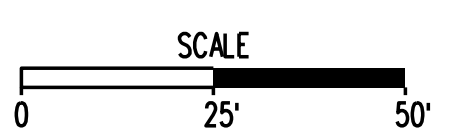
- LEGEND**
- Remove Existing Asphalt Walkway
 - Proposed Asphalt Shared Use Path
 - Proposed "V" Ditch
 - Proposed Grading Hinge Point
 - Existing Right of Way
 - Existing Wetlands
 - Denotes Construction Limit in Cut
 - Denotes Construction Limit in Fill

- 10' WIDE SHARED USE PATH
- DETECTABLE WARNING SURFACE
- ST'D VDOT HR-1, TYPE III
- ST'D VDOT RW-3
- 5' WIDE CONCRETE SIDEWALK
- REMOVEABLE LOCKING BOLLARD (PFM PLATE II-B)
- ASPHALT SAWCUT
- DO NOT DISTURB EXISTING UTILITY
- ST'D VDOT CG-2
- MECHANICALLY STABILIZED EARTH (MSE) RETAINING WALL

NOTES:

- GRADE AROUND SHARED USE PATH TO ENSURE POSITIVE DRAINAGE (2d MAX).
- IT IS THE CONTRACTOR'S RESPONSIBILITY TO PROTECT FROM HARM OR REPLACE UNDER LICENSED LAND SURVEYOR ALL PROPERTY MONUMENTATION DISTURBED BY CONSTRUCTION.
- THE LIMITS OF CLEARING AND GRADING SHOWN WITHIN THE RESOURCE PROTECTION AREA (RPA) MUST BE STRICTLY OBSERVED AND ENFORCED. ANY ADDITIONAL ENCROACHMENT INTO OR DISTURBANCE OF THE RPA IS CONSIDERED A VIOLATION OF THE CHESAPEAKE BAY PRESERVATION ORDINANCE (CBPO) AND IS SUBJECT TO THE PENALTIES OF CBPO ARTICLE 9 (VIOLATIONS AND PENALTIES).

* AREA IS NOT AVAILABLE FOR CONTRACTOR'S USE.



THESE PLANS ARE UNFINISHED AND UNAPPROVED AND ARE NOT TO BE USED FOR ANY TYPE OF CONSTRUCTION.



Whitman, Requardt & Associates, LLP
 12700 Fair Lakes Circle, Suite 300, Fairfax, Virginia 22033

Whitman, Requardt & Associates
 Richmond, Virginia
 HYDRAULIC ENGINEER

Whitman, Requardt & Associates
 Fairfax, Virginia
 ROADWAY ENGINEER

EMERGENCY POLICE - FIRE - RESCUE 911			
FAIRFAX COUNTY, VIRGINIA			
DEPARTMENT OF PUBLIC WORKS AND ENVIRONMENTAL SERVICES			
12000 GOVERNMENT CENTER PARKWAY, SUITE 449 FAIRFAX, VA., 22035-0052			
OFFICE OF CAPITAL FACILITIES 703-324-5800		ROUTE 50 SHARED USE PATH AT BEAR BRANCH	
PLAN SHEET			
PROJECT NO: 2G40-088-074			
SCALE 1"=25'		DESIGNED: NDD DRAFTED: WRA CHECKED: RBH	SHEET 3
APPROVED BY THE TRANSPORTATION DESIGN DIVISION			
FUND # 400-C40011			

REFERENCES
 (PROFILES, DETAIL & DRAINAGE DESCRIPTION SHEETS, ETC.)

Shared Use Path Profile	3A(1)
Sidewalk Profile	3A(2)
Bridge & Retaining Wall Plans	4(1)-4(28)
Typical Sections	2B(1)-2B(2)